

NOTES

1. STATOR LOCATION DIMENSION IS FROM SLEEVE EDGE (OPPOSITE LEAD END) TO STATOR STEEL 91/89.
2. STATOR STACK 2 1/4".
3. PRESS STATOR SO THAT STATOR NOTCH LINES UP WITH WELD SEAM OF SLEEVE AND LEADS EXIT APPROX. AS SHOWN.
4. THRU AIR SPACING BETWEEN WIRE AND METAL .094 MIN.
5. TIE BOLT TORQUE TOLERANCE 13 - 17 IN. LBS.
6. LOCATE DANGER LABEL, 6120 6128, ADJACENT TO AND RIGHT OF NAMEPLATE WITHIN .25" TO READ RIGHT FROM LEAD END OF MOTOR.
7. SALES TO SPECIFY ON P.O. WHICH PACK TO USE.
8. ASSEMBLE SECOND NUT SECURELY ON LEAD END TIE BOLT EXTENSIONS.
9. ASSEMBLE SLINGER, 8865 6002, WITH SLICK SIDE AWAY FROM MOTOR.

ECO	REV.	DATE	SPEC/CHECK
632464	0	2-11-04	MKR/MKR
642082	1	5-23-11	MKR/MKR

A. SEE PACKAGING MANUAL PAGE 3 FOR PACKAGING PROCEDURES.

1 MOTOR/CARTON;
21 MOTORS/LAYER;
6 LAYERS/PALLET;
126 MOTORS/PALLET.

B. SEE DRAWING 8785 6079 SH. 1 FOR PALLET LAYOUT.

C. CENTER LABEL, 6120 6622, ON END OF CARTON.

D. PLACE MISC. PARTS PACK, 8785 6183, AND INSTRUCTION SHEET, 6121 6012, IN CARTON WITH MOTOR.

71xx xxxxC	71xx xxxxx	71xx xxxxx
------------	------------	------------

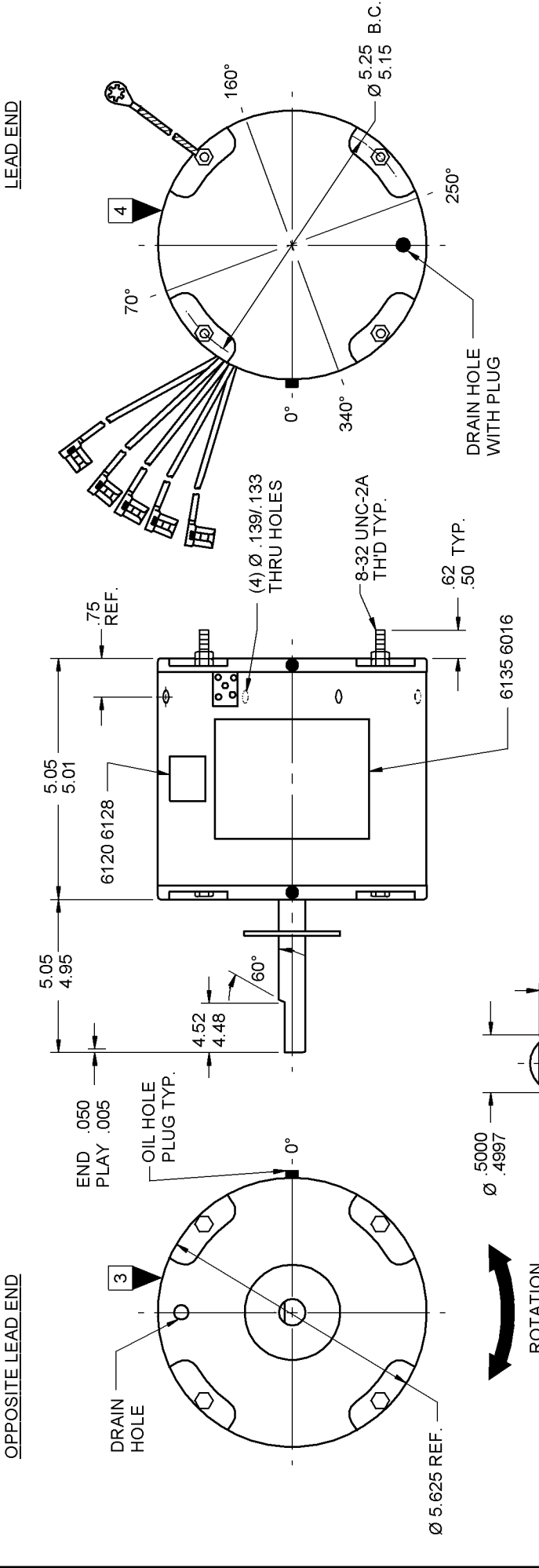
PRODUCTION TEST AT IDLE 230 VOLTS 60 HZ		MOTOR SPEED		PERFORMANCE TEST 230 VOLTS 60 HZ 1 PH 1/2 HP CAP. 7.5 MFD 370 VAC		LOADED		LOCKED		BREAK	
AMP	WATT	RPM	AMP	OZ/FT	RPM	AMP	WATT	OZ/FT	AMP	WATT	OZ/FT
1.34	141.9	116.1	HIGH	45.9	1075	3.11	655	11.5	6.75	1191	54.6

HI-POT TEST 2000 VOLTS

MAX LEAKAGE CURRENT 5 mA

TYPICAL PERFORMANCE SHOWN ABOVE FOR CCWLE ROTATION.

7126 4965	MA
-----------	----



LEAD DATA: 18 GA. 4/64" INS. 105° C THERMO. ORANGE, BLACK, YELLOW, PURPLE AND BROWN LEADS. ALL LEADS 38.00"/36.00" LONG WITH 1/4" FLAG TERMINALS.

GROUND DATA: 18 GA. 2/64" INS. 105° C THERMO. GRN/YEL 13.00"/12.00" LONG WITH A # 10 SERRATED RING TERM.

DANGER
TO AVOID ELECTRICAL SHOCK/MOTOR DAMAGE, ONLY USE #8 X .25" THREAD FORMING SCREWS PROVIDED WHEN USING MOUNTING HOLES IN SLEEVE.

IF MOUNTING MOTOR HORIZONTALLY 0° MUST BE AT TOP OF MOTOR ± 60°.

SPECIAL INSTRUCTIONS: SHAFT IS BONDERIZED. SCREWS AND WASHERS AND INSTRUCTION SHEET PACKED WITH MOTOR. ROTOR IS RUSTPROOFED.

MOTORS PACKED MAX. PER SKID: PALLET PACK, 126 CARTON PACK, TRAY PACK.

CUSTOMER: FASCO DISTRIBUTING CO.

PART NUMBER: D2800

APPLICATION: DIST. SALES P.S.C.

FINISH COLOR: GRAY

MOTOR WEIGHT: 16.50 LBS.

ENVIRONMENT: WET

INSULATION CLASS: B

SAFETY WARNING
THIS MOTOR MUST BE GROUNDED IN ACCORDANCE WITH LOCAL OR NATIONAL ELECTRICAL CODES TO PREVENT POSSIBLE INJURY DUE TO ELECTRICAL SHOCK.

FASCO INDUSTRIES, INC. MOTOR DIVISION ASSEMBLED IN MEXICO

V. 208/230 HZ 60 PH 1 TEAO ROT

HP 1/2 INS CL B CAP 7.5 MFD 370 VAC AT 230 V.

AMP 2.9 40° C AMB CAP 10 MFD 370 VAC AT 208 V.

RPM 1075 TYPE U26B1 NO. 7126-4965

CONNECTION DIAGRAM

4 WIRE: BRN, YEL, PUR, ORG. CAP. LINE. 3 WIRE: PUR, ORG, BLK. CAP. LINE.

SHOWN FOR CCWLE ROTATION TO REVERSE INTERCHANGE BROWN AND PURPLE LEADS

DATE/BAR CODE AREA PER 8882 6003

LOCATE Ø OF NAMEPLATE ON Ø OF SLEEVE TO READ RIGHT FROM LEAD END OF MOTOR CENTER AT 0°.

SIZE 3.50 X 2.00

6135 6016,R REV. 1

MOTOR NUMBER	7126 4965							
REV.	1							
MOTOR TYPE	P.S.C.							
LA	FR	A	S	C	E	B	A	
00	26	30	T	09	FD	5	E	0