

NOTES

- THRU AIR SPACING BETWEEN WIRE AND METAL .094 MIN.
- TIE BOLT TORQUE TOLERANCE 7 - 12 IN. LBS.
- FOR WASHER SET-UP, SEE CHART C600 0279, DETAIL "H".
- LOCATE CONNECTION DIAGRAM, 6134 6699, ADJACENT TO AND RIGHT OF NAMEPLATE WITHIN .25" TO READ RIGHT FROM LEAD END OF MOTOR.
- CONNECT THE TWO YELLOW REV. LEADS TOGETHER AND THE TWO PURPLE REV. LEADS TOGETHER. THIS WILL GIVE CCWLE ROTATION.
- SALES TO SPECIFY ON P.O. WHICH PACK TO USE.

71xx xxxx,R

71xx xxxxC

- A. SEE PACKAGING MANUAL PAGE 2 FOR PACKAGING PROCEDURES.
- 1 MOTOR/CARTON;
 - 32 MOTORS/LAYER;
 - 6 LAYERS/PALLET;
 - 192 MOTORS/PALLET.
- B. SEE DRAWING 8785 6079 SH. 1 FOR PALLET LAYOUT.
- C. CENTER LABEL, 6119 6058, ON END OF CARTON.
- D. PLACE PAMPHLET, 6122 4579, IN CARTON WITH MOTOR.

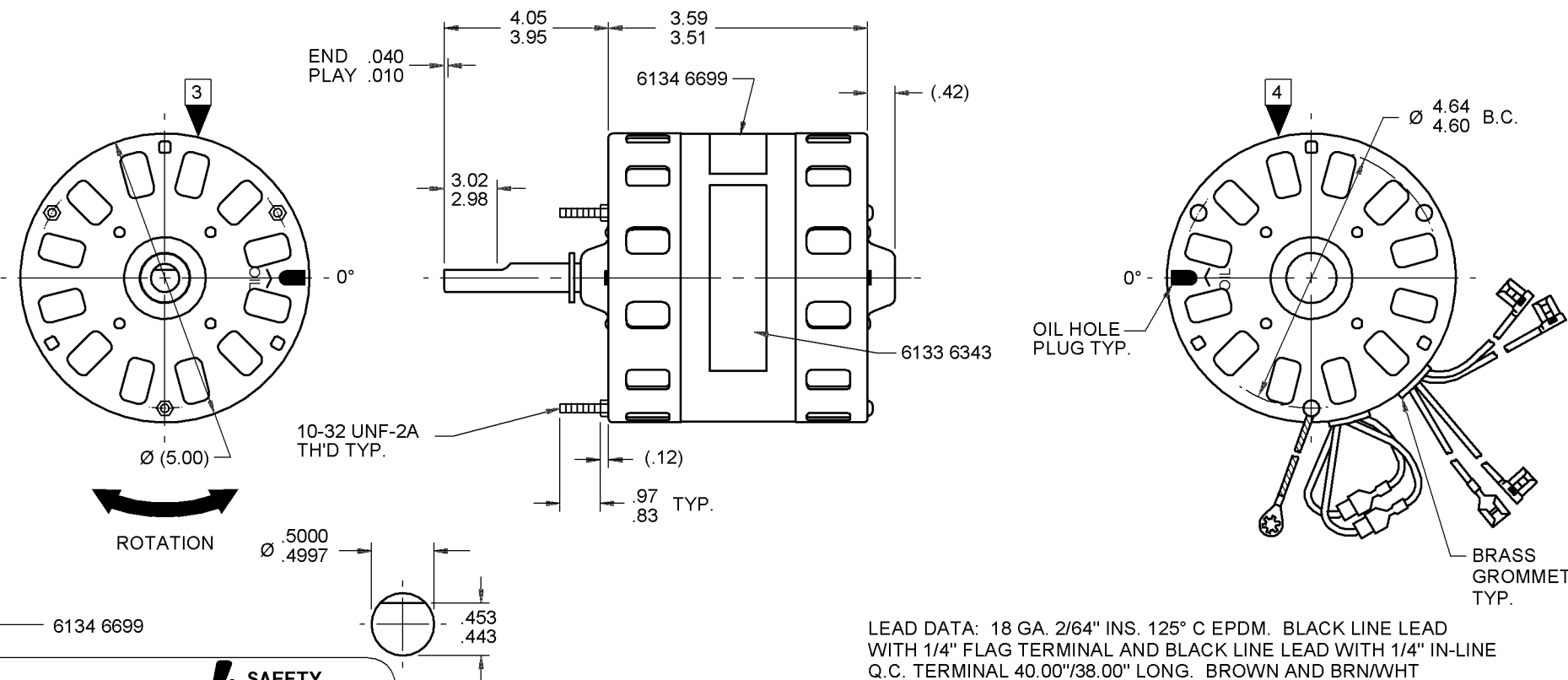
If Printed, this is an Uncontrolled Document

PRODUCTION TEST AT IDLE 230 VOLTS 60 HZ		MOTOR SPEED	PERFORMANCE TEST 230 VOLTS 60 HZ 1 PH 1/5 HP CAP. 5 MFD 370 VAC											
AMP	WATT		IDLE				LOADED				LOCKED			BREAK
.80 — .66	101.2 — 82.8	HIGH	RPM	AMP	WATT	OZ/IN	RPM	AMP	WATT	OZ/IN	AMP	WATT	OZ/IN	
			1191	.73	92	251	925	1.94	404	77	2.62	526	251	
HI-POT TEST 2000 VOLTS		TYPICAL PERFORMANCE SHOWN ABOVE FOR CCWLE ROTATION.												
MAX LEAKAGE CURRENT 5 mA														

7186 0006 MA

OPPOSITE LEAD END

LEAD END



ROTATION INSTRUCTIONS

CW	CCW
PURPLE → PURPLE	PURPLE → PURPLE
PURPLE → YELLOW	PURPLE → YELLOW
YELLOW → YELLOW	YELLOW → YELLOW
YELLOW → PURPLE	PURPLE → PURPLE



SAFETY WARNING
THIS MOTOR MUST BE GROUNDED IN ACCORDANCE WITH LOCAL OR NATIONAL ELECTRICAL CODES TO PREVENT POSSIBLE INJURY DUE TO ELECTRICAL SHOCK

LEAD DATA: 18 GA. 2/64" INS. 125° C EPDM. BLACK LINE LEAD WITH 1/4" FLAG TERMINAL AND BLACK LINE LEAD WITH 1/4" IN-LINE Q.C. TERMINAL 40.00"/38.00" LONG. BROWN AND BRN/WHT CAP. LEADS 42.00"/40.00" LONG WITH 1/4" FLAG TERMINALS.

REV. LEAD DATA: 18 GA. 2/64" INS. 125° C EPDM. 2 YELLOW AND 2 PURPLE 8.00"/6.00" LONG WITH 1/4" PRE-INSULATED Q.C. TERMINALS.

GROUND LEAD DATA: 18 GA. 2/64" INS. 105° C THERMO. GRN/YEL 7.00"/6.00" LONG WITH A #10 SERRATED RING TERMINAL.

SPECIAL INSTRUCTIONS: SHAFT IS BONDERIZED. ROTOR IS RUSTPROOFED. THE BLACK LEAD WITH THE FLAG TERMINAL IS COMMON TO THE BRN/WHT LEAD. PAMPHLET PACKED WITH MOTOR.

MOTORS PACKED MAX. PER SKID: PALLET PACK, 192 CARTON PACK.

CUSTOMER: FASCO DISTRIBUTING CO. PROPRIETARY: DO NOT DUPLICATE OR DISCLOSE TO THIRD PARTIES WITHOUT WRITTEN PERMISSION OF FASCO IND. INC., ELDON MO.

PART NUMBER: D262 FASCO INDUSTRIES, INC. MOTOR DIVISION ELDON PLANT

APPLICATION: DIST. SALES	MOTOR TYPE	MOTOR NUMBER	REV.
FINISH COLOR: GRAY	P.S.C.	7186 0006	7
MOTOR WEIGHT: 8.80 LBS.		R	
ENVIRONMENT: WET			
INSULATION CLASS: B			

FASCO FASCO INDUSTRIES, INC. MOTOR DIVISION ASSEMBLED IN MEXICO

V. 230 HZ 60 PH 1 ROT ←

HP 1/5 AO CAP 5 MFD 370 VAC

AMP 2.3 TYPE U186B1 NO. 7186-0006

RPM 925 INS CL B 40° C AMB

DATE/BAR CODE AREA PER 8882 6003

MODEL D262

THERMALLY PROTECTED CONNECTION DIAGRAM BROWN → CAPACITOR BLACK → LINE BLACK → LINE

6133 6343,R REV. 6

LOCATE Ø OF NAMEPLATE ON Ø OF STATOR TO READ RIGHT FROM LEAD END OF MOTOR CENTER AT 0°.

SIZE 3.50 X 1.00

8669 6691 1