

NOTES:

1. THRU AIR SPACING BETWEEN WIRE AND METAL .094 MIN.
2. TIE BOLT TORQUE TOLERANCE 7 - 12 IN. LBS.
3. FOR WASHER SET-UP, SEE CHART C600 0279, DETAIL "H".
4. LOCATE CONNECTION DIAGRAM, 6130 6312, ADJACENT TO AND RIGHT OF NAMEPLATE WITHIN .25" TO READ RIGHT FROM LEAD END OF MOTOR.
5. CONNECT THE TWO YELLOW REV. LEADS TOGETHER AND THE TWO PURPLE REV. LEADS TOGETHER. THIS WILL GIVE CCWLE ROTATION.
6. ASSEMBLE NYLON GROMMET, 0061 3346, IN LEAD EXIT OF COVER, 8464 0491.
7. SALES TO SPECIFY ON P.O. WHICH PACK TO USE.

ECO	REV.	DATE	SPEC/CHECK
634153	6	01-17-05	GAE/XXX
638231	7	6-4-08	MKR/MKR
639206	8	3-13-09	MKR/MKR
641691	9	10-21-10	GAE/GAE

71xx xxxx,R

A. SEE PACKAGING MANUAL PAGE 3 FOR PACKAGING PROCEDURES.

1 MOTOR/CARTON;
24 MOTORS/LAYER;
6 LAYERS/PALLET;
144 MOTORS/PALLET.

B. SEE DRAWING 8785 6079 SH. 8 FOR PALLET LAYOUT.

C. CENTER LABEL, 6119 6930, ON END OF CARTON.

D. PLACE PAMPHLET, 6122 4579, IN CARTON WITH MOTOR.

71xx xxxxP,RP

A. SEE PACKAGING MANUAL PAGE 6 FOR PACKAGING PROCEDURE AND PAGE 8 FOR FILLER CONSTRUCTION.

42 MOTORS/LAYER;
3 LAYERS/CARTON;
2 CARTONS/PALLET;
252 MOTORS/PALLET.

B. CUT TENT FILLER, 8662 6119, INTO 3 1/4" LENGTHS.

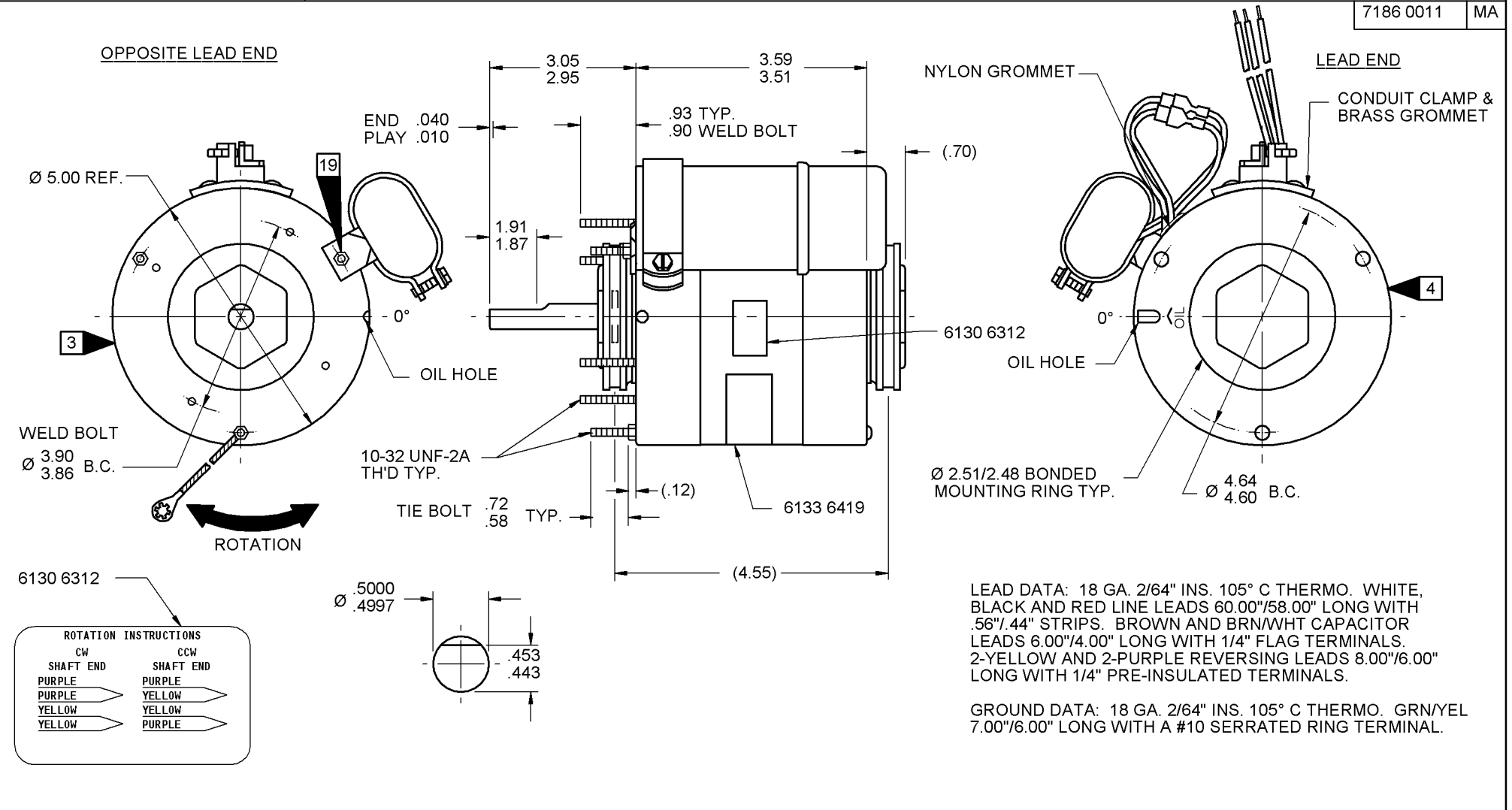
C. PLACE 1 PAMPHLET, 6122 4579, IN EACH LAYER OF MOTORS.

FILLER ASSEMBLY	7886 0011,R	REV. 1
6 OF 8662 6397	---	"A" FILLER
8 OF 8662 6530	---	"B" FILLER
4 OF 8662 6398	---	"C" FILLER

PRODUCTION TEST AT IDLE 115 VOLTS 60 HZ		MOTOR SPEED	PERFORMANCE TEST 115 VOLTS 60 HZ 1 PH 1/8 HP CAP. 4 MFD 370 VAC										
AMP	WATT		IDLE				LOADED				LOCKED		BREAK
			RPM	AMP	WATT	OZ/IN	RPM	AMP	WATT	OZ/IN	AMP	WATT	OZ/IN
1.40 — 1.14	78.1 — 63.9	HIGH	1197	1.27	71	156	1075	2.32	231	38	4.03	402	172
.55 — .45	34.1 — 27.9	LOW	1194	.50	31	72	1075	1.09	102	18	2.07	177	81

HI-POT TEST 2000 VOLTS
MAX LEAKAGE CURRENT 5 mA

TYPICAL PERFORMANCE SHOWN ABOVE FOR CCWLE ROTATION.



LEAD DATA: 18 GA. 2/64" INS. 105° C THERMO. WHITE, BLACK AND RED LINE LEADS 60.00"/58.00" LONG WITH .56"/.44" STRIPS. BROWN AND BRN/WHT CAPACITOR LEADS 6.00"/4.00" LONG WITH 1/4" FLAG TERMINALS. 2-YELLOW AND 2-PURPLE REVERSING LEADS 8.00"/6.00" LONG WITH 1/4" PRE-INSULATED TERMINALS.

GROUND DATA: 18 GA. 2/64" INS. 105° C THERMO. GRN/YEL 7.00"/6.00" LONG WITH A #10 SERRATED RING TERMINAL.

7186 0011,P = MADE IN U.S.A.
7186 0011R,RP = ASSEMBLED IN MEXICO

FASCO FASCO INDUSTRIES, INC. MOTOR DIVISION

V. 115 HZ 60 INS CL B PH 1 ROT →
HP 1/8-1/15 RPM 1075 (2 SPD) TYPE U186B1
AMP 2.3-1.1 TEAO 40° C AMB NO. 7186-0011
CAP 4 MFD 370 VAC THERMALLY PROTECTED

MODEL D261

SAFETY WARNING
THIS MOTOR MUST BE GROUNDED IN ACCORDANCE WITH LOCAL OR NATIONAL ELECTRICAL CODES TO PREVENT POSSIBLE INJURY DUE TO ELECTRICAL SHOCK

DATE/BAR CODE AREA PER 8882 6003

SPECIAL INSTRUCTIONS: SHAFT IS BONDERIZED. PAMPHLET IS SUPPLIED.

MOTORS PACKED MAX. PER SKID: 252 PALLET PACK, 144 CARTON PACK.

CUSTOMER: FASCO DISTRIBUTING CO.	PROPRIETARY: DO NOT DUPLICATE OR DISCLOSE TO THIRD PARTIES WITHOUT WRITTEN PERMISSION OF FASCO IND. INC., ELDON MO.
PART NUMBER: D261	FASCO INDUSTRIES, INC. MOTOR DIVISION ELDON PLANT
APPLICATION: DIST. SALES	MOTOR TYPE
FINISH COLOR: GRAY	P.S.C.
MOTOR WEIGHT: 9.0 LBS.	MOTOR NUMBER
ENVIRONMENT: DRY	7186 0011
INSULATION CLASS: B	P,R,RP
	REV. 9

6133 6419,R REV. 4

LOCATE Ⓞ OF NAMEPLATE ON Ⓞ OF STATOR TO READ RIGHT FROM LEAD END OF MOTOR CENTER AT 65° CCWLE.

SIZE 3.50 X 1.00

If Printed, this is an Uncontrolled Document