

NOTES

1. THRU AIR SPACING BETWEEN WIRE AND METAL .094 MIN.
2. TIE BOLT TORQUE TOLERANCE 7 - 12 IN. LBS.
3. FOR WASHER SET-UP, SEE CHART C600 0279, DETAIL "H".
4. SALES TO SPECIFY ON P.O. WHICH PACK TO USE.

| ECO | REV. | DATE | SPEC/CHECK |
|--------|------|----------|------------|
| 639192 | 5 | 3-11-09 | MKR/MKR |
| 641682 | 6 | 10-19-10 | MKR/MKR |
| 628285 | 3 | 4-17-01 | LDC/RWS |
| 631861 | 4 | 10-2-03 | LDC/LDC |

A. SEE PACKAGING MANUAL PAGE 2 FOR PACKAGING PROCEDURE.

1 MOTOR/CARTON;
24 MOTORS/LAYER;
7 LAYERS/PALLET;
168 MOTORS/PALLET.

B. SEE DRAWING 8785 6079 SH. 8 FOR PALLET LAYOUT.

C. CENTER LABEL, 6119 0820, ON END OF CARTON.

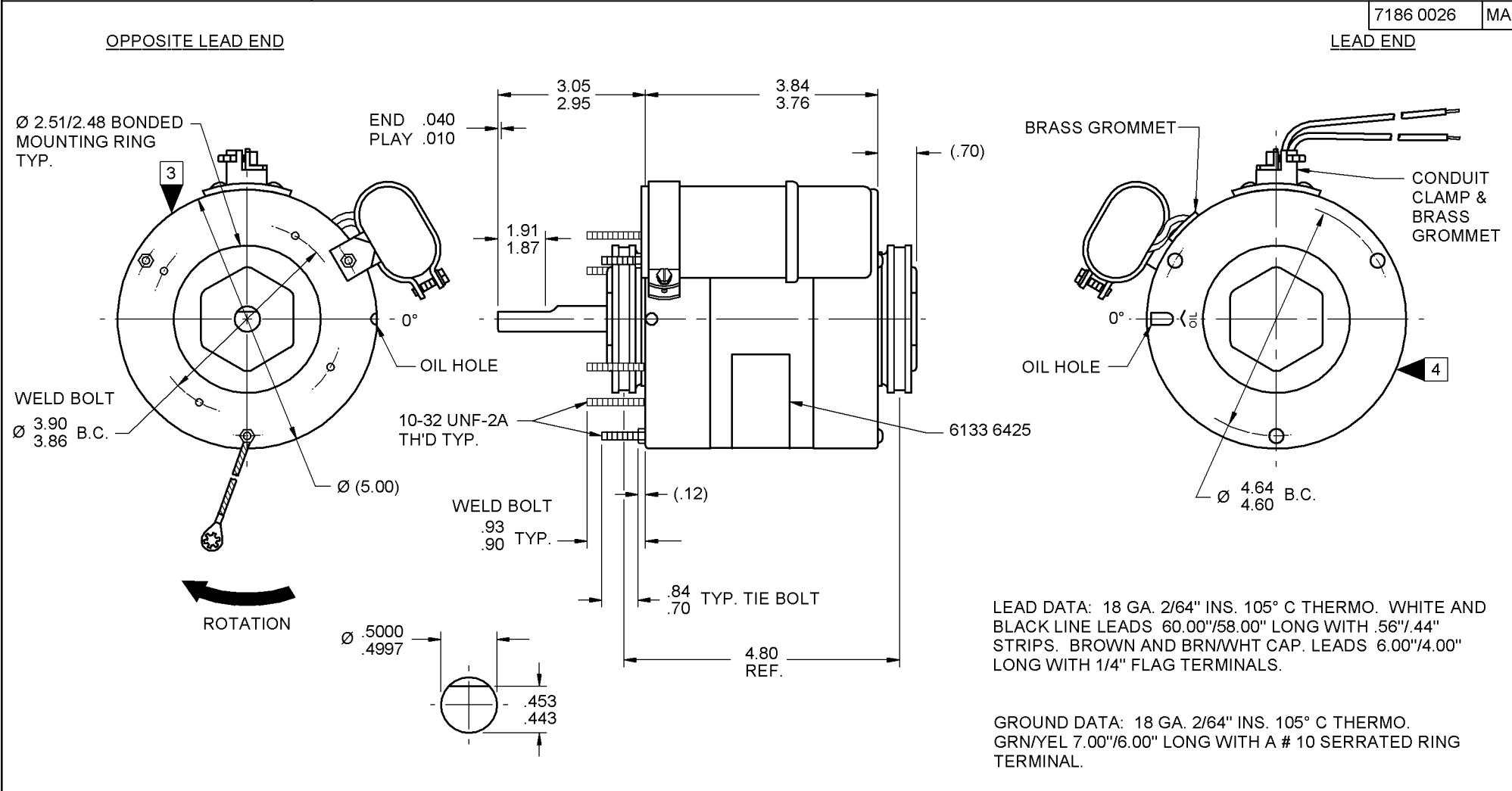
D. PLACE PAMPHLET, 6122 4579, IN CARTON WITH MOTOR.

71xx xxxx,R

71xx xxxx,C

If Printed, this is an Uncontrolled Document

| PRODUCTION TEST AT IDLE 115 VOLTS 60 HZ | | MOTOR SPEED | PERFORMANCE TEST 115 VOLTS 60 HZ 1 PH 1/6 HP CAP. 4 MFD 370 VAC | | | | | | | | | | |
|--|------|-------------|---|------|------|--------|------|------|------|--------|------|------|-------|
| AMP | WATT | | IDLE | | | LOADED | | | | LOCKED | | | BREAK |
| | | | RPM | AMP | WATT | OZ/IN | RPM | AMP | WATT | OZ/IN | AMP | WATT | OZ/IN |
| 1.16 | .95 | HIGH | 1194 | 1.05 | 68 | 177 | 1075 | 2.52 | 247 | 43 | 4.63 | 420 | 197 |
| | | | | | | | | | | | | | |
| | | | | | | | | | | | | | |
| | | | | | | | | | | | | | |
| HI-POT TEST 2000 VOLTS | | | | | | | | | | | | | |
| MAX LEAKAGE CURRENT 5 mA | | | | | | | | | | | | | |



7186 0026 = MADE IN U.S.A.
7186 0026R = ASSEMBLED IN MEXICO

FASCO INDUSTRIES, INC. MOTOR DIVISION THERMALLY PROTECTED

V. 115 HZ 60 PH 1 ROT ←
HP 1/6 AMP 2.9 CAP 4 MFD 370 VAC
RPM 1075 TYPE U186B1 NO. 7186-0026
INS CL B 40° C AMB TEAO

MODEL D260

CONNECTION DIAGRAM:
BRN ——— CAPACITOR
BRN/WHT ——— LINE
WHITE ——— LINE
BLACK ——— LINE

SAFETY WARNING
THIS MOTOR MUST BE GROUNDED IN ACCORDANCE WITH LOCAL OR NATIONAL ELECTRICAL CODES TO PREVENT POSSIBLE INJURY DUE TO ELECTRICAL SHOCK

DATE/BAR CODE AREA PER 8882 6003

6133 6425,R REV. 4

LOCATE ϕ OF NAMEPLATE ON ϕ OF STATOR TO READ RIGHT FROM LEAD END OF MOTOR CENTER AT 305° CWL.E.

SIZE 3.50 X 1.00

| | |
|--|--|
| SPECIAL INSTRUCTIONS: SHAFT IS BONDERIZED. PAMPHLET PACKED WITH MOTOR. | |
| MOTORS PACKED MAX. PER SKID: PALLET PACK, 168 CARTON PACK. | |
| CUSTOMER: FASCO DISTRIBUTING CO. | PROPRIETARY: DO NOT DUPLICATE OR DISCLOSE TO THIRD PARTIES WITHOUT WRITTEN PERMISSION OF FASCO IND. INC., ELDON MO. FASCO INDUSTRIES, INC. MOTOR DIVISION ELDON PLANT |
| PART NUMBER: D260 | MOTOR TYPE P.S.C. |
| APPLICATION: DIST. SALES | MOTOR NUMBER 7186 0026 |
| FINISH COLOR: GRAY | REV. 6 |
| MOTOR WEIGHT: 9.50 LBS. | |
| ENVIRONMENT: DRY | |
| INSULATION CLASS: B | |