

- NOTES:
1. THRU AIR SPACING BETWEEN WIRE AND METAL .10 MIN.
 2. TIE BOLT TOLERANCE 7 - 12 LBS.
 3. FOR WASHER SET-UP, SEE CHART C600 0279, DETAIL "A".
 4. SALES TO SPECIFY ON P.O. WHICH PACK TO USE.
 5. ASSEMBLE WARNING LABEL .05 FROM EDGE OF OPPOSITE LEAD END COVER AT 0°, AS SHOWN, TO READ RIGHT FROM LEAD END OF MOTOR.

ECO	REV.	DATE	SPEC/CHECK
631069	42	4-29-03	BJP/RWS
638321	43	6-25-08	LDC/LDC
639150	44	3-5-09	LDC/LDC
C438789	45	4-22-2010	BGP/SDM

71x xxx,M

A. SEE PACKAGING MANUAL PAGE 2 FOR PACKAGING PROCEDURE.

1 MOTOR/CARTON;
16 MOTORS/LAYER;
6 LAYERS/PALLET;
96 MOTORS/PALLET.

B. SEE DRAWING 8785 6079 SH. 1 FOR PALLET LAYOUT.

C. CENTER LABEL, 6122 5924, ON END OF CARTON.

D. REMOVE PAPER TUBES FROM TERMINALS AS MOTORS ARE BEING PACKED.

E. PLACE PAMPHLET, 6122 4579, IN CARTON WITH MOTOR.

F. CARTON LABELS MUST ALL FACE ONE DIRECTION TOWARD THE OPEN END OF THE PALLET. SEE P.S. 8883 4408.

71x xxxxC

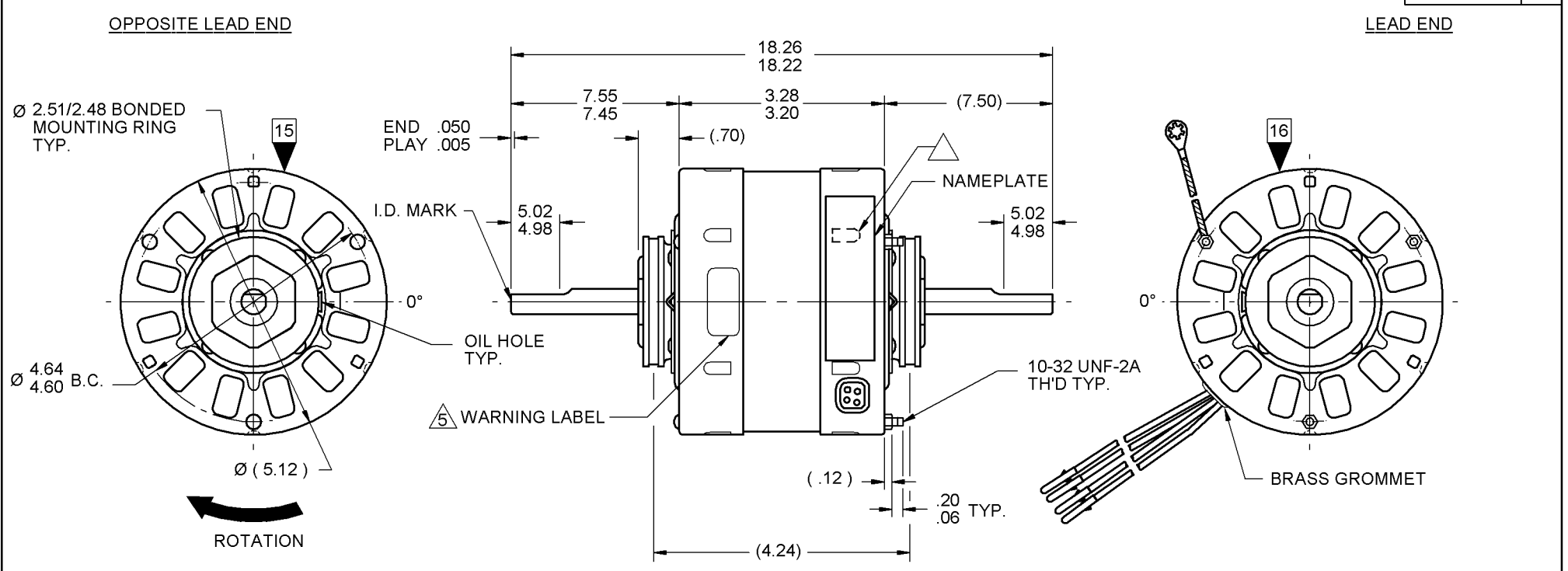
71x xxxxZ

If Printed, this is an Uncontrolled Document

PRODUCTION TEST AT IDLE 115 VOLTS 60 HZ		MOTOR SPEED	PERFORMANCE TEST 115 VOLTS 60 HZ 1 PH 1/25 HP										
AMP	WATT		IDLE			LOADED				LOCKED			BREAK
			RPM	AMP	WATT	OZ/IN	RPM	AMP	WATT	OZ/IN	AMP	WATT	OZ/IN
1.32 — 1.08	83.6 — 68.4	HIGH	1165	1.2	76	37	1050	1.4	103	16	1.8	127	44
.88 — .72	53.9 — 44.1	MED.	1156	.8	49	21	1050	.9	63	10	1.1	74	26
.55 — .45	39.6 — 32.4	LOW	1138	.5	36	13	1050	.6	44	7	.8	54	17

HI-POT TEST 2000 VOLTS
MAX LEAKAGE CURRENT 5 mA

7151 0130 MA



LEAD DATA: 18 GA. 2/64" INS. 105° C THERMO. WHITE, BLACK, BLUE AND RED LEADS 37.00"/35.00" LONG TO END OF .084 PIN TERMINALS.

GROUND LEAD DATA: 18 GA. 2/64" INS. 105° C THERMO. GRN/YEL 7.00"/6.00" LONG WITH A #10 SERRATED RING TERMINAL.

6129 4832

SAFETY WARNING

This Motor Must Be Grounded In Accordance With Local Or National Electrical Codes To Prevent Possible Injury Due To Electrical Shock

0046 4072 0047 0343

FASCO Fasco Industries, Inc. Motor Division

Assembled in Mexico

No. 71510130 TYPE U51 AO PH 1 CONNECTION DIAGRAM

115 V 60 Hz

Model D255

Thermally Protected Max Amb: 40°C

1/25-1/50-1/80 HP Rot: CCWLE

1050 RPM (3 SPD) 1.5-1.0-.6 A

WHITE — LINE

BLK-HI — LINE

BLUE-MED — LINE

RED-LO — LINE

61299553

LOCATE NAMEPLATE .05 FROM EDGE OF LEAD END COVER TO READ RIGHT FROM LEAD END OF MOTOR CENTER AT 26° CWLE.

SIZE 3.00 X .90

SPECIAL INSTRUCTIONS: FLATS TO BE PARALLEL WITHIN ±20°. MOTORS MUST BE FREE TO ASSURE LOW SPEED STARTING. SHAFT IS BONDERIZED. LANCE MUST BE COMPLETELY COVERED BY NAMEPLATE. PAMPHLET PACKED WITH MOTOR.

MOTORS PACKED MAX. PER SKID: ___ PALLET PACK, 96 CARTON PACK, ___ TRAY PACK.

CUSTOMER: FASCO DISTRIBUTING CO.	PROPRIETARY: DO NOT DUPLICATE OR DISCLOSE TO THIRD PARTIES WITHOUT WRITTEN PERMISSION OF FASCO IND. INC., ELDON MO.
PART NUMBER: D255	FASCO INDUSTRIES, INC. MOTOR DIVISION ELDON PLANT
APPLICATION: DIST. SALES	MOTOR TYPE
FINISH COLOR: GRAY	SHADED POLE
MOTOR WEIGHT: 6.96 LBS.	MOTOR NUMBER
ENVIRONMENT: DRY	7151 0130
INSULATION CLASS: A	REV. 45

B LA FR A S C E B A

00 51 11 V 03 KK 7 7 0