

NOTES

1. THRU AIR SPACING BETWEEN WIRE AND METAL .10 MIN.
2. TIE BOLT TOLERANCE 7 - 12 IN. LBS.
3. FOR WASHER SET-UP, SEE CHART C600 0279, DETAIL "A".
4. SALES TO SPECIFY ON P.O. WHICH PACK TO USE.

△ ASSEMBLE 6129-4832, WARNING LABEL, AT 0° AS SHOWN TO READ RIGHT FROM OPPOSITE LEAD END OF MOTOR.

ECO	REV.	DATE	SPEC/CHECK
631846	54	10-1-03	LDC/LDC
638249	55	6-10-08	LDC/LDC
639083	56	2-19-09	MKR/MKR
C438698	57	04-07-2010	BGP/SDM

71xx xxxx,M

A. SEE PACKAGING MANUAL PAGE 2 FOR PACKAGING PROCEDURE.

1 MOTOR/CARTON;
16 MOTORS/LAYER;
6 LAYERS/PALLET;
96 MOTORS/PALLET.

B. SEE DRAWING 8785 6079 SH. 1 FOR PALLET LAYOUT.

C. CENTER LABEL, 6122 5917, ON END OF CARTON.

D. CARTON LABELS MUST ALL FACE ONE DIRECTION TOWARD THE OPEN END OF THE PALLET. SEE P.S. 8883 4408.

E. PLACE PAMPHLET, 6122 4579, IN CARTON WITH MOTOR.

71xx xxxxC

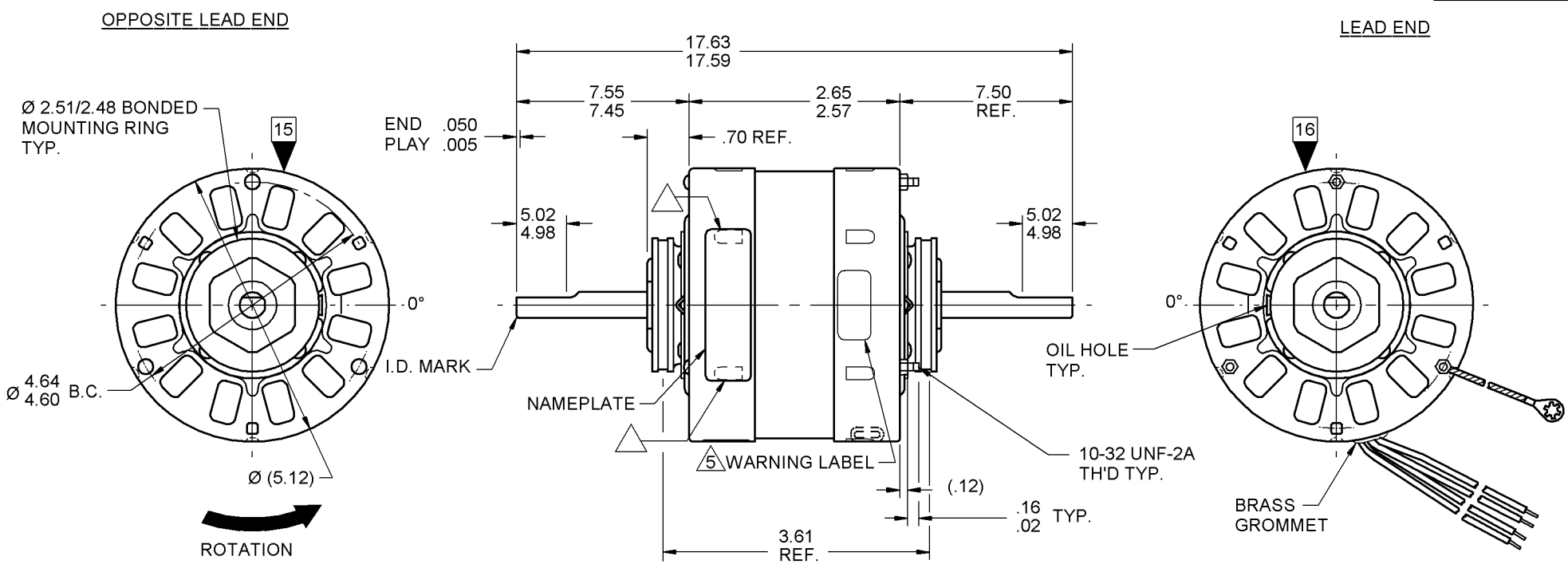
71xx xxxxZ

If Printed, this is an Uncontrolled Document.

PRODUCTION TEST AT IDLE 115 VOLTS 60 HZ		MOTOR SPEED	PERFORMANCE TEST 115 VOLTS 60 HZ 1 PH 1/20 HP											
AMP	WATT		IDLE				LOADED				LOCKED			BREAK
			RPM	AMP	WATT	OZ/IN	RPM	AMP	WATT	OZ/IN	AMP	WATT	OZ/IN	
2.09 — 1.71	143.0 — 117.0	HIGH	1175	1.9	130	53	1050	2.1	169	20	2.6	213	62	
1.21 — .99	79.2 — 64.8	MED.	1170	1.1	72	32	1050	1.3	96	13	1.5	119	36	
.77 — .63	53.9 — 44.1	LOW	1158	.7	49	20	1050	.8	63	8	1.0	77	24	

HI-POT TEST 2000 VOLTS
MAX LEAKAGE CURRENT 5 mA

7151 0134 MA



LEAD DATA: 18 GA. 2/64" INS. 105° C THERMO. WHITE, BLACK, BLUE AND RED LEADS 33.00"/31.00" LONG WITH .56"/.44" STRIPS.

GROUND DATA: 18 GA. 2/64" INS. 105° C THERMO. GRN/YEL 7.00"/6.00" LONG WITH A # 10 SERRATED RING TERMINAL.

△ 6129 4832

SAFETY WARNING

This Motor Must Be Grounded In Accordance With Local Or National Electrical Codes To Prevent Possible Injury Due To Electrical Shock

0046 4072 0047 0343

FASCO Motor Division

Assembled in Mexico

No. 71510134 TYPE U51 AO PH 1 CONNECTION DIAGRAM

115 V 60 Hz

Model D253

Thermally Protected Max Amb: 40°C

1/20-1/40-1/50 HP Rot: CWLE

1050 RPM (3 SPD) 2.2-1.4-.8 A

WHITE — LINE

BLK-HI — — — LINE

BLUE-MED — — —

RED-LO — — —

61299553

LOCATE EDGE OF NAMEPLATE .05 FROM EDGE OF OPP. LEAD END COVER TO READ RIGHT FROM OPP. LEAD END OF MOTOR. CENTER AT 0°. SIZE 3.00 X .90

SPECIAL INSTRUCTIONS: FLATS TO BE PARALLEL WITHIN ± 20°. SHAFT IS BONDERIZED.			
△ LANCES MUST BE COMPLETELY COVERED BY NAMEPLATE. PAMPHLET PACKED WITH MOTOR.			
MOTORS PACKED MAX. PER SKID: ___ PALLET PACK, 96 CARTON PACK, ___ TRAY PACK.			
CUSTOMER: FASCO DISTRIBUTING CO.	PROPRIETARY: DO NOT DUPLICATE OR DISCLOSE TO THIRD PARTIES WITHOUT WRITTEN PERMISSION OF FASCO IND. INC., ELDON MO.		
PART NUMBER: D253	FASCO INDUSTRIES, INC. MOTOR DIVISION ELDON PLANT		
APPLICATION: DIST. SALES	MOTOR TYPE	MOTOR NUMBER	
FINISH COLOR: GRAY	SHADED POLE	7151 0134	
MOTOR WEIGHT: LBS.		REV. 57	
ENVIRONMENT: DRY			
INSULATION CLASS: A			