

D

D

C

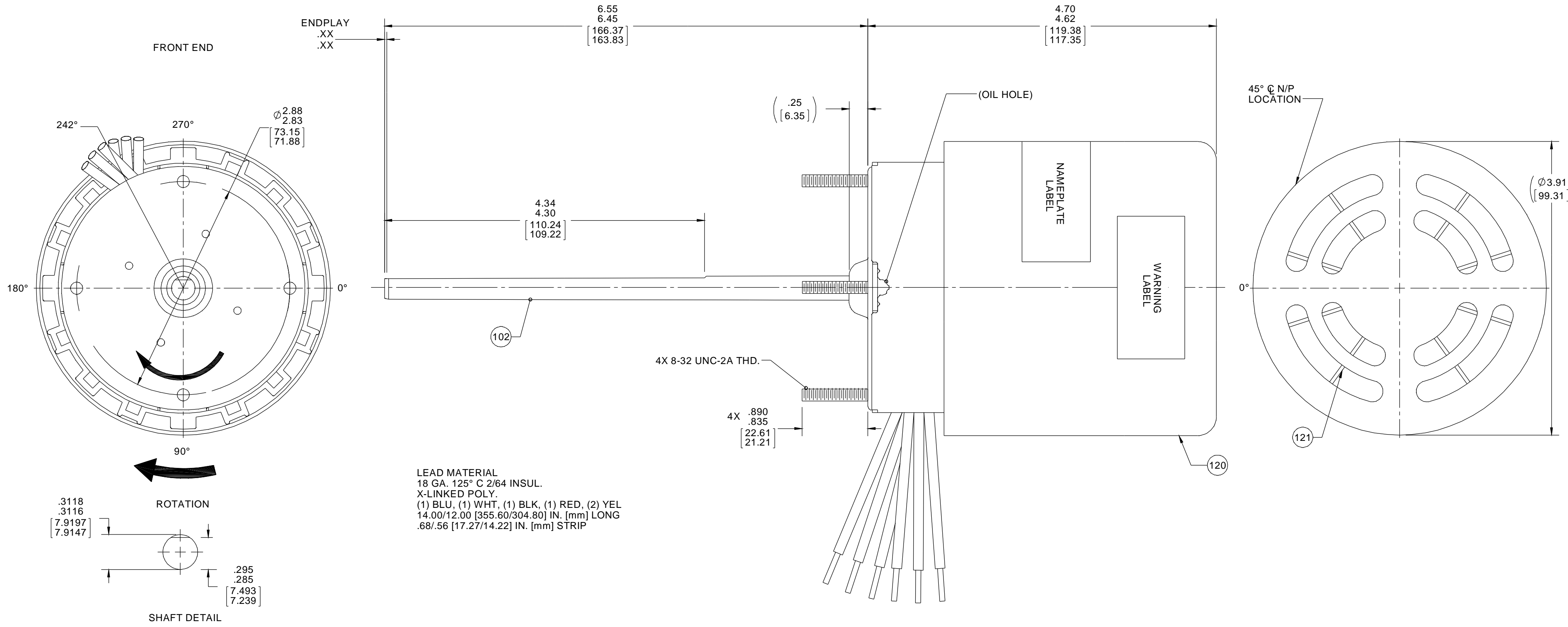
C

B

B

A

A



61299409

STAMP ROTATION ARROW ON WELD PLATE PER OUTLINE ABOVE

61305568

**SAFETY WARNING**  
This motor must be grounded in accordance with local or national electrical codes to prevent possible injury due to electrical shock

**AVERTISSEMENT DE SÉCURITÉ**  
Ce moteur doit être fondée sur conformément à la réglementation locale ou national électrique codes pour prévenir d'éventuelles blessures en raison de choc électrique

LABEL TO READ RIGHT FROM FRONT END

00464072

Fasco Industries, Inc. Motor Division

Assembled In Mexico

No. 71217504 TYPE U21 T.P. AO

115/230 V 60 Hz

1.7 A 3000 RPM

Model D220 Sealed Ball Brg LR36496

1/20 HP Max Amb: 40°C

Connection Diagram

115 V 230 V

Blu — Line Blu — Line

Red — Line Red — Line

Wht — Line Wht — Line

Blk — Line Blk — Line

Yel — Line Yel — Line

61299553

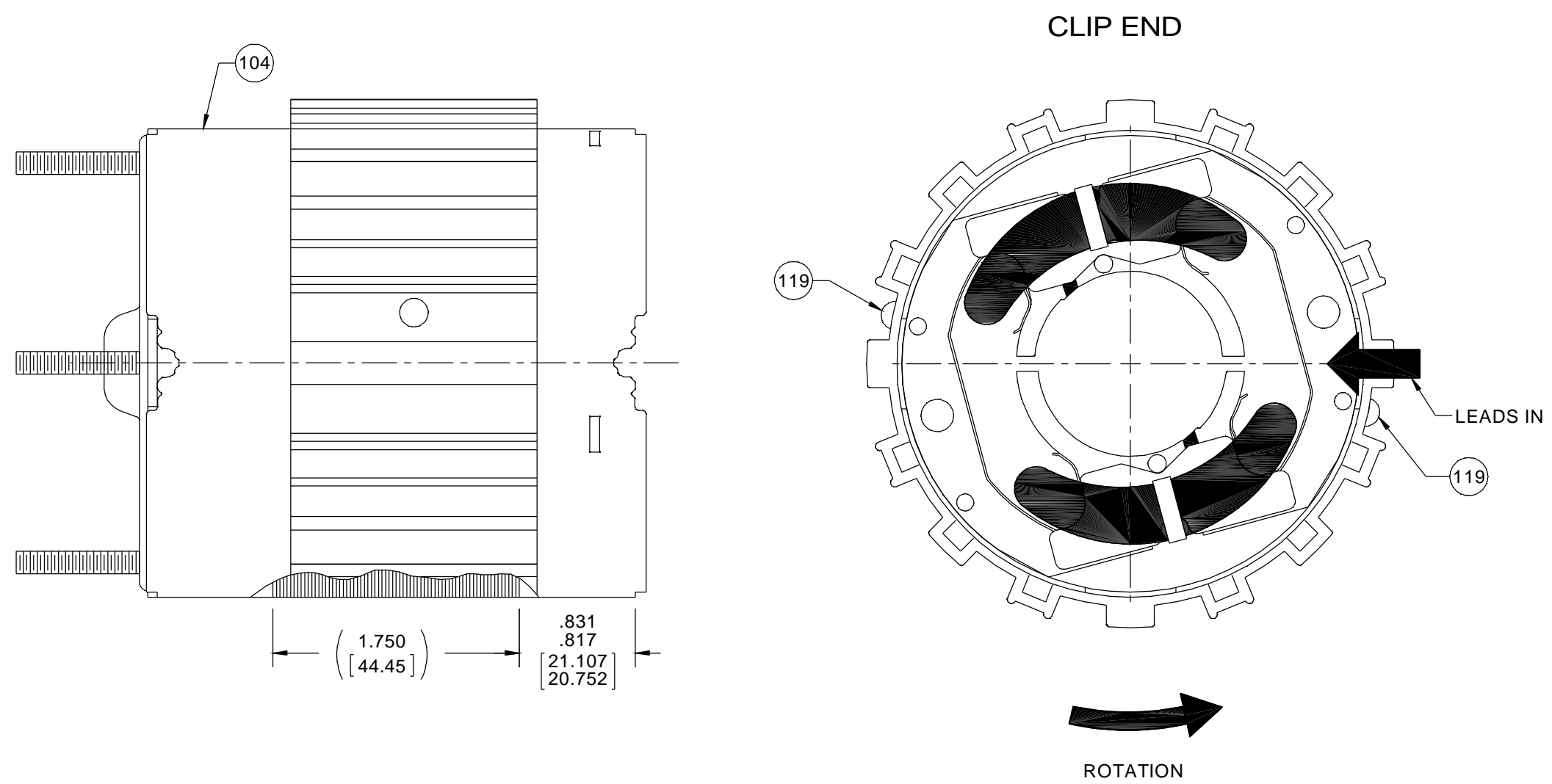
NOTE:  
1. NO PACKAGING TAPE OVER CARTON LABEL.

CUSTOMER:	FDC	APPLICATION:	
CUSTOMER PN:	D220	MOTOR WEIGHT:	4 3/4 LBS.
		ENVIRONMENT:	DRY
MOTOR TYPE		REFERENCE SAMPLE	
SHADED POLE			
B	LA	FR	A
00	21	28	T
S			
07			
C	E	B	A
BT	9	0	0
TYPICAL PERFORMANCE AT 115 VOLTS 60 HZ			
IDLE		LOADED	
MOTOR SPEED	RPM	AMP	WATT
115 V	3500	1.17	74
		IN OZ	RPM
		17	3000
		AMP	WATT
		1.53	121
		IN OZ	AMP
		5.7	1.91
		WATT	143
		IN OZ	18
		LOCKED	BREAK
		AMP	IN OZ
		.95	143
		18	
		230 V	3500
		.59	74
		17	3000
		.76	121
		5.7	.95
		143	18

DRAWING REVISION	REVISION BY	DATE	TOLERANCES UNLESS OTHERWISE SPECIFIED:	DRAWN BY	PLA
AF	PLA	3/18/2015	DEC. INCH mm ANGLE	PLA	
ECO-0071336	JMG	3/18/2015	.X ±0.1 [±2.5]	DATE	3/18/2015
ECO DESCRIPTION			.XX ±0.01 [±0.25]	APPROVED BY	JMG
REDRAWN ON SOLID WORKS			.XXX ±0.005 [±0.127]	DATE	3/18/2015
COPYRIGHT REGAL BELOIT AMERICA, INC. ALL RIGHTS RESERVED. PROPRIETARY AND CONFIDENTIAL INFORMATION - THIS DOCUMENT IS THE PROPERTY OF REGAL BELOIT AMERICA, INC. (OWNER) AND CONTAINS OWNER'S PROPRIETARY INFORMATION. ANY PERSON, CORPORATION OR OTHER FIRM RECEIVING IT IS DEEMED, BY RECEIVING IT, TO AGREE THAT IT, AND/OR ANY PART OF IT, SHALL NOT BE DISCLOSED TO ANY PERSON, CORPORATION OR OTHER ENTITY, DUPLICATED, AND/OR USED, EXCEPT AS EXPRESSLY APPROVED IN WRITING IN ADVANCE BY OWNER. THIS DOCUMENT SHALL BE RETURNED TO OWNER UPON REQUEST. IT MAY BE SUBJECT TO CERTAIN RESTRICTIONS UNDER APPLICABLE EXPORT CONTROL LAWS AND REGULATIONS.			REMOVE BURRS & BREAK SHARP EDGES: .003/.015 [0.076/.381] X 45° CORNER FILLETS: R.02 [5.1] MACHINED SURFACES: 125 INCH mm 3.2 mm SHOWN IN [BRACKETS]	DESCRIPTION	MOTOR ASSY
			THIRD ANGLE PROJECTION	MATERIAL	PROCESS/FINISH BLACK
			SIZE	DRAWING NUMBER	SHEET
			C	71217504	1 OF 2

NOTES:

1. ALL SPACINGS THRU AIR BETWEEN WIRE AND METAL MUST BE AT LEAST: .094 [2.388].
2. ASSEMBLE LOADING SPRING BETWEEN WASHER AND BEARING ON CLIP END, WITH SPRING FINGERS TOWARD BEARING.
3. ASSEMBLE BALL BEARINGS TO BEARING RETAINERS PER P.S. 88834419.



BLAST COOLED SPECIFICATIONS

1. DRILL PILOT HOLE WITH A #37 DRILL .300/.275 [7.620/6.985] DEEP AT CENTER OF DRILL AND PIN COOLING BAND SECURELY TO STATOR AND MAIN FRAME ASSEMBLY, (2) PLACES, 180° APART.
2. DIMENSION OVER ENDPLATES TO BE 3.67/3.63 [93.22/92.20].
3. FAN MUST TRACK WITHIN .035 [.889] AND HAVE .10 [2.54] MIN. CLEARANCE TO BEARING BOSS AFTER PRESS ON OPERATION.
4. ASSEMBLE COOLING CASE PER PROCESS STANDARD.

MEXICO PACKING SPECIFICATIONS

1. PACK 1 PER CONTAINER, 144 MAX. PER PALLET, PACKING ASSY.: 87854000, 24 CARTONS PER LAYER, 6 LAYERS PER PALLET, P.S. 88834200 AND P.S. 88834408.
2. CARTON LABELS MUST ALL FACE ONE DIRECTION TOWARD THE OPEN END OF THE PALLET. SEE P.S. 88834408.

DRAWING REVISION AF	REVISION BY PLA	DATE 3/18/2015	TOLERANCES UNLESS OTHERWISE SPECIFIED: DEC. INCH mm ANGLE .X ±0.1 [±2.5] .XX ±0.01 [±0.25] .XXX ±0.005 [±0.127] .XXXX ±0.0005 [±0.0127]	DRAWN BY PLA	Regal Beloit America, Inc.	
ECO ECO-0071336	APPROVED BY JMG	DATE 3/18/2015	DATE 3/18/2015	APPROVED BY JMG		
ECO DESCRIPTION REDRAWN ON SOLID WORKS			REMOVE BURRS & BREAK SHARP EDGES: .003/.015 [.076/.381] X 45° CORNER FILLETS: R.02 [.51] MACHINED SURFACES: 125/ mm 3.2/ INCH mm 3.2/ mm SHOWN IN [BRACKETS]	DATE 3/18/2015	DESCRIPTION MOTOR ASSY	
<small>COPYRIGHT REGAL BELOIT AMERICA, INC. ALL RIGHTS RESERVED. PROPRIETARY AND CONFIDENTIAL INFORMATION- THIS DOCUMENT IS THE PROPERTY OF REGAL BELOIT AMERICA, INC. ('OWNER') AND CONTAINS OWNER'S PROPRIETARY INFORMATION. ANY PERSON, CORPORATION OR OTHER FIRM RECEIVING IT IS DEEMED, BY RECEIVING IT, TO AGREE THAT IT, AND/OR ANY PART OF IT, SHALL NOT BE DISCLOSED TO ANY PERSON, CORPORATION OR OTHER ENTITY, DUPLICATED, AND/OR USED, EXCEPT AS EXPRESSLY APPROVED IN WRITING IN ADVANCE BY OWNER. THIS DOCUMENT SHALL BE RETURNED TO OWNER UPON REQUEST. IT MAY BE SUBJECT TO CERTAIN RESTRICTIONS UNDER APPLICABLE EXPORT CONTROL LAWS AND REGULATIONS.</small>			REFERENCE	MATERIAL	PROCESS/FINISH BLACK	
			THIRD ANGLE PROJECTION	SIZE C	DRAWING NUMBER 71217504	SHEET 2 OF 2