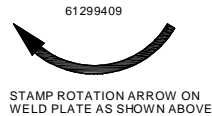
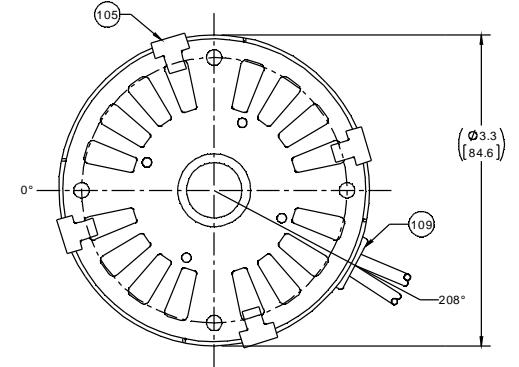
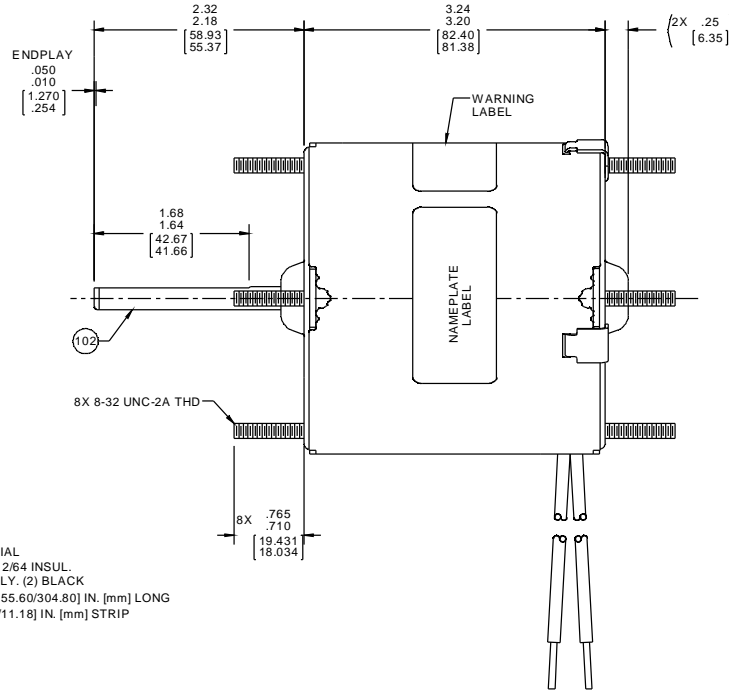


LEAD MATERIAL
 18 GA. 125°C 2/64 INSUL.
 X-LINKED POLY. (2) BLACK
 14.00/12.00 [355.60/304.80] IN. [mm] LONG
 .56/.44 [14.22/11.18] IN. [mm] STRIP



NOTES:
 1. NO PACKAGING TAPE OVER CARTON LABEL.

SAFETY WARNING
 This motor must be grounded in accordance with local or national electrical codes to prevent possible injury due to electrical shock

AVERTISSEMENT DE SECURITE
 Ce moteur doit être fondé sur conformément à la réglementation locale ou nationale électrique - codes pour prévenir d'éventuelles blessures en raison de choc électrique

00464071

FASCO Fasco Industries, Inc.
 Motor Division

Assembled In Mexico

No. 71211578 TYPE U21 T.P. AO
 115 V 60 Hz
 1.3 A 3000 RPM 1/25 HP
 Model D210 Max Amb: 40°C
 LR36496

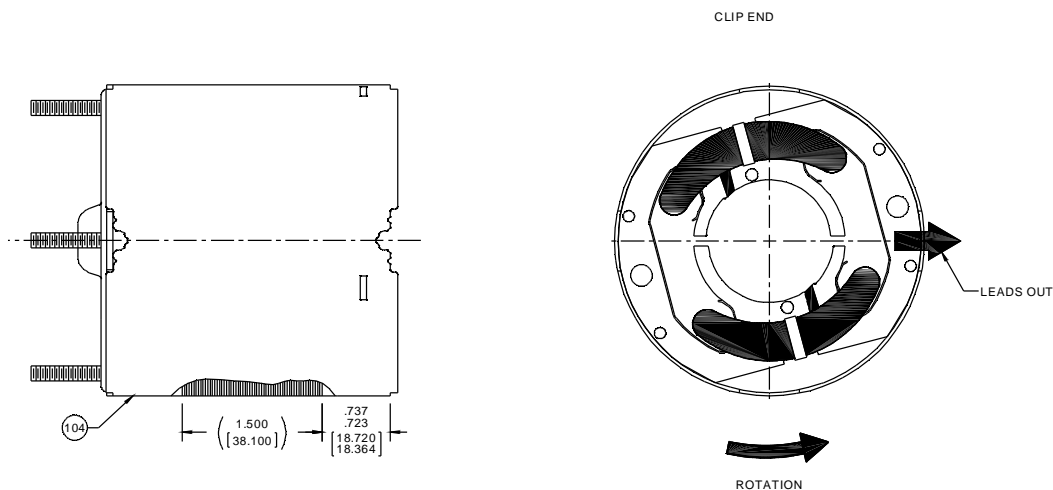
CUSTOMER:	FASCO DIST.	APPLICATION:	COUNTER SALES							
CUSTOMER PN:	D210	MOTOR WEIGHT:	3 1/4 LBS.							
	UP	ENVIRONMENT:	DRY							
HORIZONTAL	MOTOR TYPE		REFERENCE SAMPLE							
	SHADED POLE									
	B	LA	FR							
	A	S	C							
	E	B	A							
	00	21	30							
TYPICAL PERFORMANCE AT 120 VOLTS 60 HZ										
MOTOR SPEED	IDLE			LOADED			LOCKED			BREAK
	RPM	AMP	WATT	IN OZ	RPM	AMP	WATT	IN OZ	AMP	WATT
3500	1.22	76	14.0	3050	1.38	106	5.6	1.83	138	15

DRAWING REVISION	REVISION BY	PLA	DATE	TOLERANCES UNLESS OTHERWISE SPECIFIED:	DRAWN BY	PLA
ECO-0071078	APPROVED BY	JMG	2/26/2015	DEC. INCH. .010 ANGLE 20.5°	DATE	2/26/2015
ECO DESCRIPTION: REDRAWN ON SW & UPDATED IDLE AMPS, WATTS				XXX ±0.01 [±0.25]	APPROVED BY	JMG
COPYRIGHT REGAL BELOIT AMERICA, INC. ALL RIGHTS RESERVED. PROPRIETARY AND CONFIDENTIAL INFORMATION. THIS DOCUMENT IS THE PROPERTY OF REGAL BELOIT AMERICA, INC. (OWNER) AND CONTAINS OWNER'S PROPRIETARY INFORMATION. ANY PERSON, CORPORATION OR OTHER ENTITY RECEIVING IT IS DEEMED BY RECEIVING IT TO AGREE THAT IT AND/OR ANY PART OF IT SHALL NOT BE DISCLOSED TO ANY PERSON, CORPORATION OR OTHER ENTITY WITHOUT THE WRITTEN CONSENT OF REGAL BELOIT AMERICA, INC. (OWNER). THIS DOCUMENT SHALL BE RETURNED TO OWNER UPON REQUEST. IT MAY BE SUBJECT TO CERTAIN RESTRICTIONS UNDER APPLICABLE EXPORT CONTROL LAWS AND REGULATIONS.				XXX ±0.005 [±0.127]	DATE	2/26/2015
REMOVE BURRS & BREAK SHARP EDGES: .0031 [0.076] X 45°				XXX ±0.005 [±0.127]	REFERENCE	
MACHINED SURFACES: .0005 [0.0127]				XXX ±0.005 [±0.127]	MATERIAL	
mm SHOWN IN [BRACKETS]				THIRD ANGLE PROJECTION	PROCESS/FINISH	BLACK
SHEET 1 OF 2					SIZE	DRAWING NUMBER
						71211578

ORACLE PART REV. 041

NOTES:

1. ALL SPACINGS THRU AIR BETWEEN WIRE AND METAL MUST BE AT LEAST: .063 [1.600].
2. SEE ROTOR AND SHAFT DRAWING FOR WASHER SETUP.



PACKING SPECIFICATIONS

1. PACK 1 PER CONTAINER, 270 MAX. PER PALLET. PACKING ASSY. 87854000, 45 CONTAINERS PER LAYER, 6 LAYERS PER PALLET, P.S. 88834200 AND P.S. 88834408.
2. PLACE PC 136 FILLER TUBE OVER SHAFT END OF MOTOR. PACK MOTOR WITH LEADS DOWN.
3. CARTON LABELS MUST ALL FACE ONE DIRECTION TOWARD THE OPEN END OF THE PALLET. SEE P.S. 88834408.

DRAWING REVISION 8 B		REVISION BY PLA	DATE 2/26/2015	TOLERANCES UNLESS OTHERWISE SPECIFIED:		DRAWN BY PLA		Regal Beloit America, Inc.				
ECO-0071078		APPROVED BY JMG	DATE 2/26/2015	DEC.	INCH.	MM.	ANGLE	DATE 2/26/2015	DESCRIPTION MOTOR ASSY			
ECO DESCRIPTION REDRAWN ON SW & UPDATED IDLE AMPS, W ATTS				.X	±0.1	[±2.5]	20.5°	APPROVED BY JMG				
<small> COPYRIGHT REGAL BELOIT AMERICA, INC. ALL RIGHTS RESERVED. PROPRIETARY AND CONFIDENTIAL INFORMATION: THIS DOCUMENT IS THE PROPERTY OF REGAL BELOIT AMERICA, INC. (OWNER) AND CONTAINS OWNER'S PROPRIETARY INFORMATION. ANY PERSON, CORPORATION OR OTHER FIRM RECEIVING IT IS DEEMED BY RECEIVING IT TO AGREE THAT IT AND/OR ANY PART OF IT SHALL NOT BE DISCLOSED TO ANY PERSON, CORPORATION OR OTHER ENTITY OUTSIDE REGAL BELOIT AMERICA, INC. AS EXPRESSLY APPROVED IN WRITING IN ADVANCE BY OWNER. THIS DOCUMENT SHALL BE RETURNED TO OWNER UPON REQUEST. IT MAY BE SUBJECT TO CERTAIN RESTRICTIONS UNDER APPLICABLE EXPORT CONTROL LAWS AND REGULATIONS. </small>				.XXX	±0.0005	[±0.0127]		DATE 2/26/2015	MATERIAL	PROCESS/FINISH BLACK		
				REMOVE BURRS & BREAK SHARP EDGES: .0031 [0.0762] X 45°		CORNER FILLETS: R.02 [51]		REFERENCE	THIRD ANGLE PROJECTION	SIZE C	DRAWING NUMBER 71211578	SHEET 2 OF 2
				MACHINED SURFACES: 125		mm SHOWN IN [BRACKETS]						