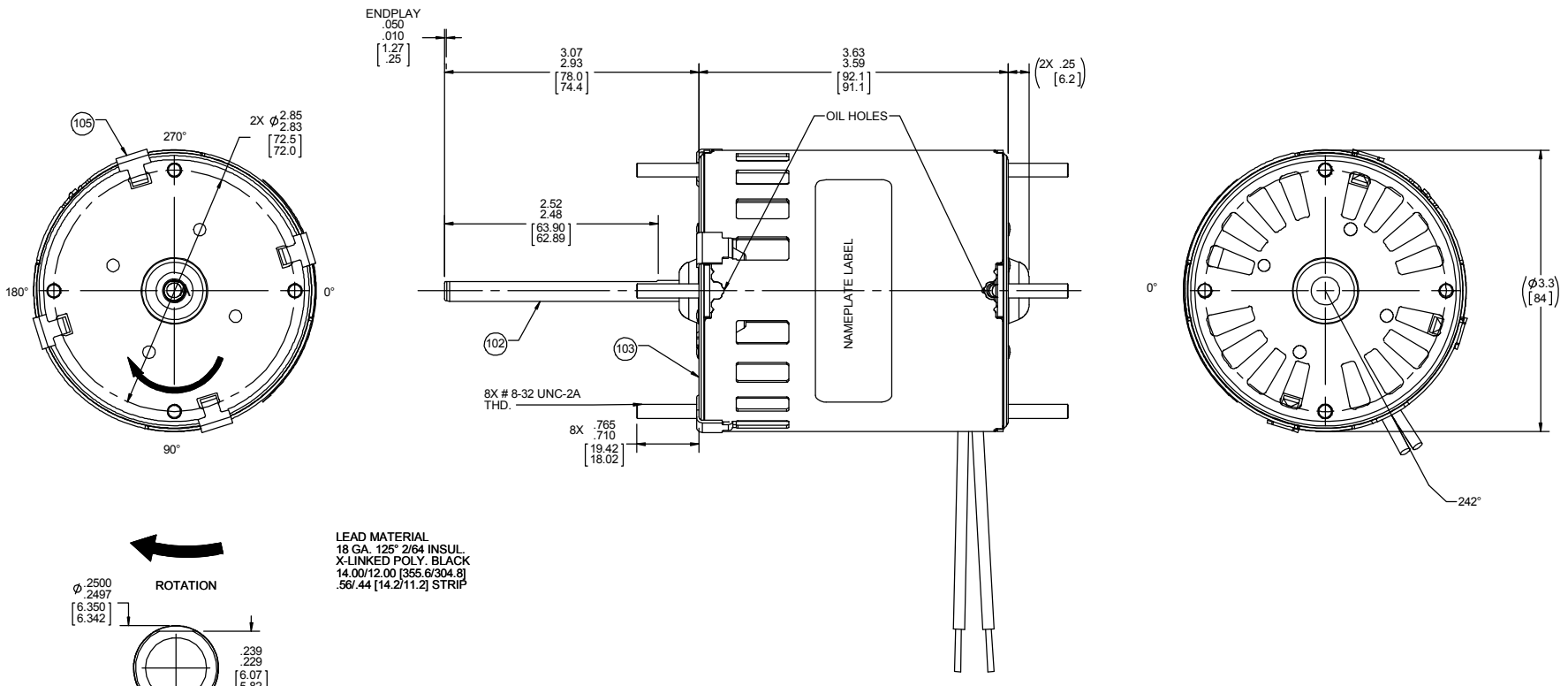
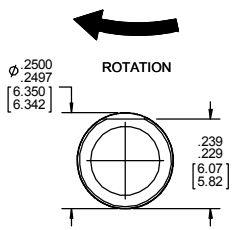


FRONT END

BACK END



LEAD MATERIAL
18 GA. 125° 2/64 INSUL.
X-LINKED POLY. BLACK
14.00/12.00 [355.6/304.8]
.56/.44 [14.2/11.2] STRIP



00464071

FASCO Fasco Industries, Inc.
Motor Division

Assembled In Mexico
No. 71211695 TYPE U21 T.P. AO
115 V 60 Hz
1.12 A 3000 RPM 1/30 HP
Model D208 Max Amb: 40° C
LR36496

61299553

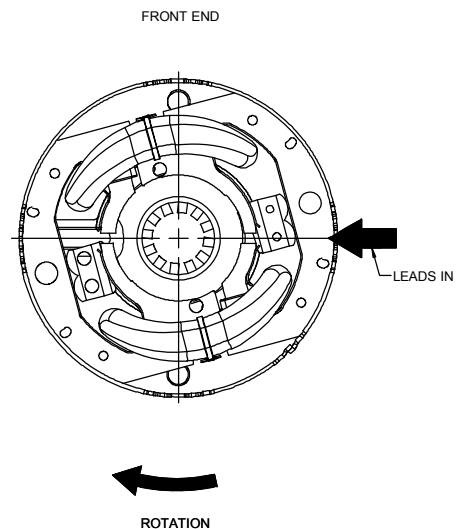
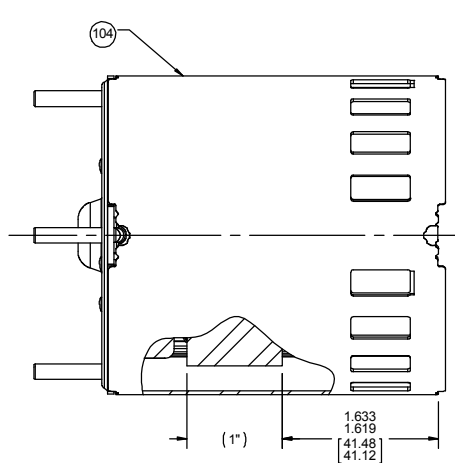
NOTES:
1. NO PACKAGING TAPE OVER CARTON LABEL.

CUSTOMER:	FASCO DIST.	APPLICATION:	COUNTER SALES
CUSTOMER PN:	D208	MOTOR WEIGHT:	2.8 LBS
		ENVIRONMENT:	DRY
MOTOR TYPE		REFERENCE SAMPLE	
SHADED POLE			
B	LA	FR	A
00	21	30	F
			04
			OC
			5
			1
			0
TYPICAL PERFORMANCE AT 115 VOLTS 60 HZ			
IDLE		LOADED	
		LOCKED	
		BREAK	
MOTOR SPEED	RPM	AMP	WATT
	3450	1.09	69
			10
			3050
			1.2
			92
			4.5
			1.52
			122
			14

DRAWING REVISION	REVISION BY	REV DATE	DATE	TOLERANCES (EXCEPT AS NOTED)	DRAWN BY	DATE
AA	ZF	05-22-2019	05-22-2019	DEC INCH MIL ANGLE X ±0.1 (E3) 1° .XX ±0.01 (±0.3) .XXX ±0.005 (±0.13) .XXX ±0.005 (±0.13) CORNER FILLETS: R.02 [±.5] MACHINED SURFACES: .125/ 3/2 INCR/ min mm DIMENSIONS IN [BRACKETS] ARE FOR REFERENCE ONLY	ZF	5-22-2019
ECO-0167562	APPROVED BY	DATE	05-22-2019	REMOVE BURRS & BREAK SHARP EDGES: .003/.015 [08/38] X 45°	APPROVED BY	DATE
ECO DESCRIPTION	ML S			THIRD ANGLE PROJECTION	ML S	05-22-2019
REDRAWN IN SOLIDWORKS				DESCRIPTION		
				OUTLINE MOTOR ASSY		
				MATERIAL		PROCESS/FINISH
				BLACK		
				SIZE	DRAWING NUMBER	SHEET
				C	71211695	1 OF 2

NOTES:

1. ALL SPACINGS THRU AIR BETWEEN WIRE AND METAL MUST BE AT LEAST: .063 [1.60]
2. STAMP ROTATION ARROW ON FRONT END FRAME IN POSITION SHOWN.



PACKING SPECIFICATIONS

1. PACK 1 PER CONTAINER; 270 MAX. PER PALLET; PACKING ASSY 87854000, 46 CARTONS PER LAYER, 6 LAYERS PER PALLET PER 88834200 AND 88834408.
2. CARTON LABELS MUST ALL FACE ONE DIRECTION TOWARD THE OPEN END OF THE PALLET. SEE 88834408.

DRAWING REVISION AA		REVISION BY ZF	REV DATE/DATE 05-22-2019	TOLERANCES (EXCEPT AS NOTED): DEC. INCH mm ANGLE .X ±0.1 [E3] ±1° .XX ±0.01 [±0.3] .XXX ±0.005 [±0.13] .XXX ±0.005 [±0.13]			DRAWN BY ZF	REGAL [®] Regal Beloit America, Inc.		
ECO-0167562		APPROVED BY MLS	DATE 05-22-2019	REMOVE BURRS & BREAK SHARP EDGES: .003/.015 [08/38] X 45° CORNER FILLETS: R.02 [.5] MACHINED SURFACES: 125/ 3.2 mm DIMENSIONS IN [BRACKETS] ARE FOR REFERENCE ONLY			DATE 5-22-2019	DESCRIPTION OUTLINE MOTOR ASSY		
ECO DESCRIPTION REDRAWN IN SOLIDWORKS				THIRD ANGLE PROJECTION			APPROVED BY MLS	MATERIAL	PROCESS/FINISH BLACK	
COPYRIGHT (PER REVISION DATE) REGAL BELOIT AMERICA, INC. ALL RIGHTS RESERVED. PROPRIETARY AND CONFIDENTIAL INFORMATION. THIS DOCUMENT IS THE PROPERTY OF REGAL BELOIT AMERICA, INC. OWNERS AND CONTAINS OWNERS PROPRIETARY INFORMATION. ANY PERSON, CORPORATION OR OTHER FIRM RECEIVING IT IS DEEMED BY RECEIVING IT, TO AGREE THAT IT, AND/OR ANY PART OF IT, SHALL NOT BE DISCLOSED TO ANY PERSON, CORPORATION OR OTHER ENTITY, DUPLICATED, AND/OR USED, EXCEPT AS EXPRESSLY APPROVED IN WRITING IN ADVANCE BY OWNER. THIS DOCUMENT SHALL BE RETURNED TO OWNER UPON REQUEST. IT MAY BE SUBJECT TO CERTAIN RESTRICTIONS UNDER APPLICABLE EXPORT CONTROL LAWS AND REGULATIONS.				DATE 05-22-2019			REFERENCE	SIZE C	DRAWING NUMBER 71211695	SHEET 2 OF 2