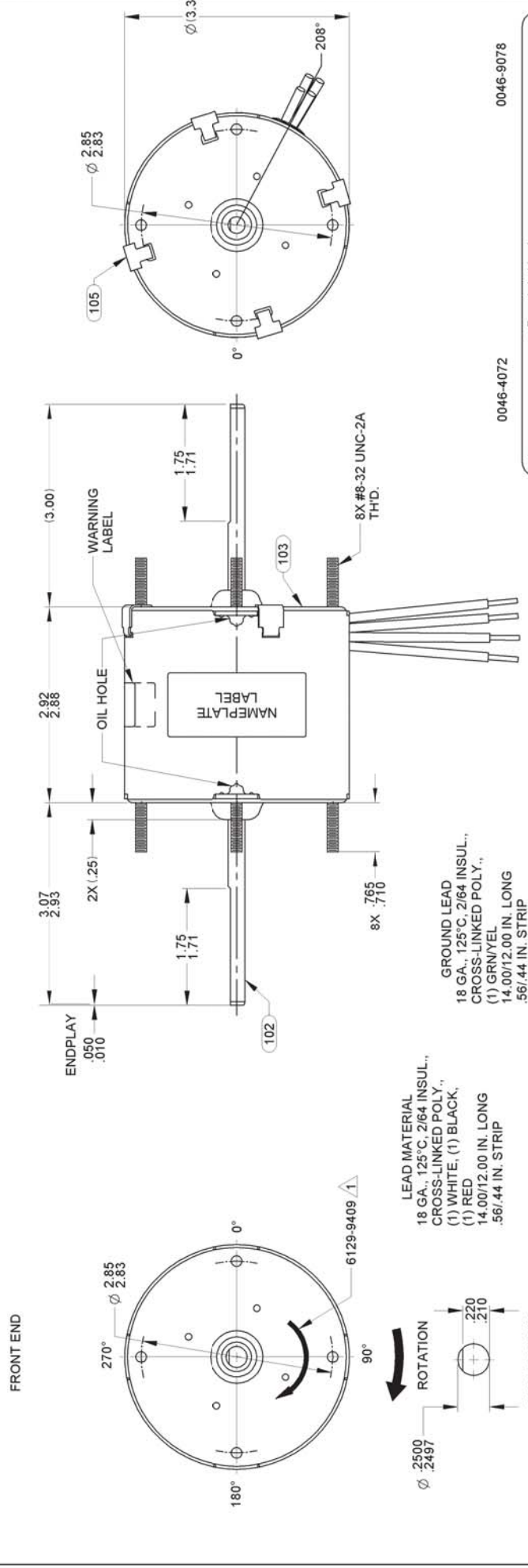


21	REDRAWN ON NEW SOLID EDGE TEMPLATES	BP071/1806	22	CHANGED NIP LAYOUT & SAFETY LABEL	RPT 11/01/07	23	REMOVE BAR CODE FROM NAMEPLATE	SDM 08/02/10	ANGLAR +/-1 DEGREE 2 PLACE DECIMAL +/- .01 3 PLACE DECIMAL +/- .005
----	-------------------------------------	------------	----	-----------------------------------	--------------	----	--------------------------------	--------------	---



FASCO Motor Division

Assembled in Mexico
 No. 71214614 TYPE U21
 115 V 60 Hz
 10 A 3000 RPM
 Model D205

T.P. TEAO
 1/40 HP
 Max. Amb: 40°C

LF36496

Connection Diagram
 Wht. — Common
 Blk. — High
 Red. — Low
 Grn/Yel — Grd

6129-4832

SAFETY WARNING
 This Motor Must Be Grounded
 In Accordance With Local Or
 National Electrical Codes
 To Prevent Possible Injury
 Due To Electrical Shock.

0046-4072 0046-9078 61299553

FRONT SHAFT POSITION		TYPICAL PERFORMANCE AT 115 VOLTS 60 HZ											
HORIZONTAL	UP DOWN	IDLE			LOADED			LOCKED			BREAK		
		R.P.M.	AMP.	WATT	IN.OZ.	R.P.M.	AMP.	WATT	IN.OZ.	AMP.	WATT	IN.OZ.	IN.OZ.
CUSTOMER APPROVAL: SIGNED: DATE:	ASSEMBLY	3415	.93	66	9.2	3000	1.06	86	4.6	1.27	110	10.7	
		3305	.44	33	5.1	2800	.54	45	3.4	.67	55	5.3	

FASCO CUSTOMER: FASCO DIST. D205

PART NUMBER: D205

APPLICATION: FASCO MOTORS GROUP AC MOTOR/BLOWER DIVISION

MOTOR WEIGHT: 3.0

ENVIRONMENT: DRY

FINISH COLOR: BLACK

DRAWN BY: B. POPPLEWELL

DATE DRAWN: 01/18/2006

MOTOR TYPE: DRAWING NUMBER 7121 4614

SHADED POLE

B	LA	FR	A	S	C	E	B	A	REV.
00	21	30	T	04	CN	6	1	0	23

CONFIDENTIAL - DO NOT DUPLICATE OR DISCLOSE TO THIRD PARTIES WITHOUT WRITTEN PERMISSION OF FASCO MOTORS GROUP, AC MOTOR/BLOWER DIVISION.