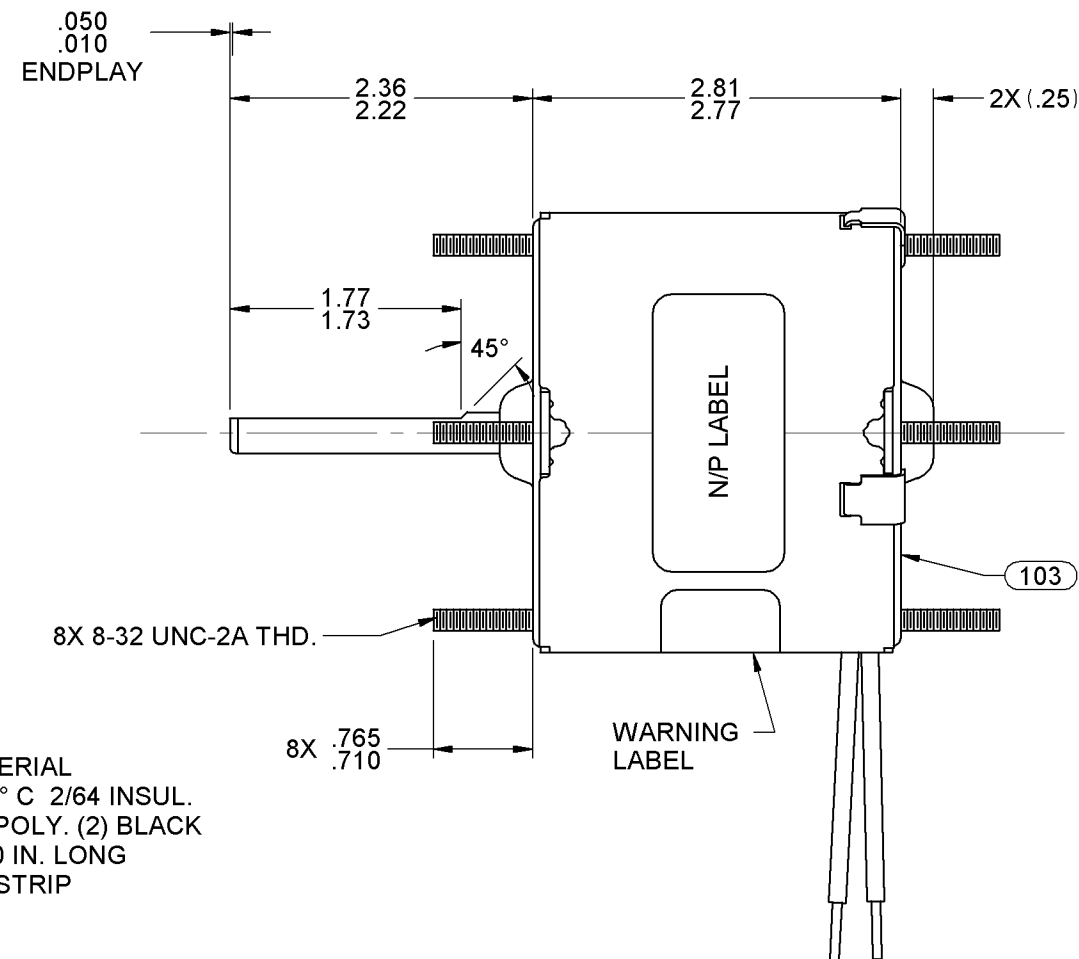
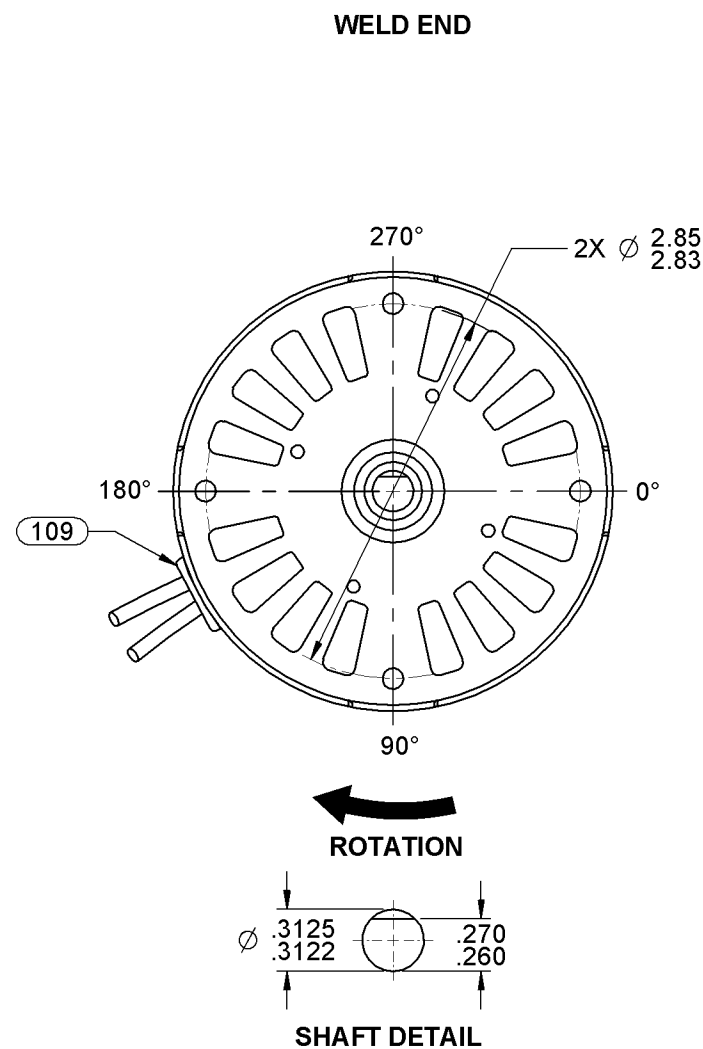
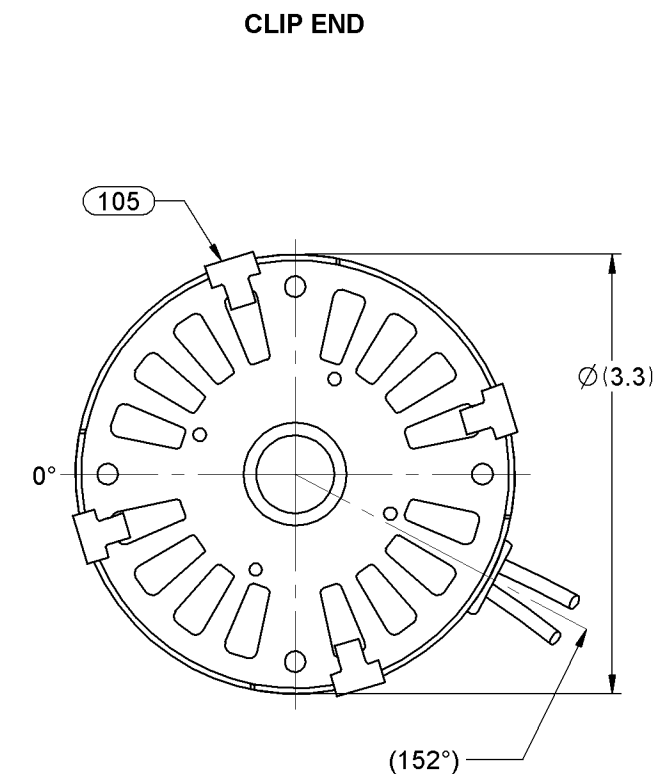


07	CHANGED N/P FORMAT, UPDATED STANDARDS	PLA 02/26/08	08	REMOVED UL, CSA LOGO'S AND BARCODE FROM N/P LABEL	SD 2-12-10	09	REVISED PACKING AND ADDED CARTON LABELS	4004953 MLM 03/15/12	STANDARD TOLERANCES: ANGULAR +/- 1 DEGREE 2 PLACE DECIMAL +/- .01 3 PLACE DECIMAL +/- .005
----	---------------------------------------	--------------	----	---	------------	----	---	-------------------------	---



LEAD MATERIAL
18 GA 125° C 2/64 INSUL.
X-LINKED POLY. (2) BLACK
14.00/12.00 IN. LONG
.68/.56 IN. STRIP



NOTES:

1. PACK 270 MOTORS MAX. PER PALLET
2. HIPOT MOTORS AT 2350 VOLT FOR ONE SECOND
3. NO PACKAGING TAPE OVER CARTON LABEL.

6129 4176

WARNING

WHEN OPERATED ON 460 V. SPECIAL CARE SHOULD BE TAKEN WITH HANDLING, CONNECTIONS AND GROUNDING TO AVOID SHOCK HAZARD.

0046-4072

0046-4282

FASCO Fasco Industries, Inc. Motor Division

Assembled In Mexico

No. 71638938 TYPE 63B1 T.P. AO

460 V 60 Hz Class B

0.5 A 1550 RPM 1/20 HP

Model D186 Max Amb: 40°C

SAFETY WARNING

This Motor Must Be Grounded in Accordance With Local Or National Electrical Codes To Prevent Possible Injury Due To Electrical Shock

61299553

FRONT SHAFT POSITION	★ TYPICAL PERFORMANCE AT 460 VOLTS 60 Hz.												CUSTOMER: FASCO DIST.	FASCO FASCO MOTORS GROUP AC MOTOR/BLOWER DIVISION									
	HORIZONTAL UP DOWN	MOTOR SPEED	IDLE			LOADED			LOCKED			BREAK	PART NUMBER: D186										
R.P.M.			AMP.	WATT	IN.OZ.	R.P.M.	AMP.	WATT	IN.OZ.	AMP.	WATT	IN.OZ.	APPLICATION: COUNTER SALES										
CUSTOMER APPROVAL:													MOTOR WEIGHT: 3.13 LBS.	MOTOR TYPE	DRAWING NUMBER								
SIGNED:													ENVIRONMENT: DRY	SHADED POLE	7163 8938								
DATE:													FINISH COLOR: BLACK	B	LA	FR	A	S	C	E	B	A	REV.
													DRAWN BY: S. DALTON	00	63	30	V	05	KM	5	3	0	09
													DATE DRAWN: 2-6-2002										