

NOTES

1. THRU AIR SPACING BETWEEN WIRE AND METAL .10 MIN.
2. TIE BOLT TORQUE TOLERANCE 7 - 12 IN. LBS.
3. FOR WASHER SET-UP, SEE CHART C600 0279, DETAIL "A".
4. ROTOR FREENESS TO BE WITHIN 3/4 OZ. IN. TORQUE.
5. SALES TO SPECIFY ON P.O. WHICH PACK TO USE.

ECO	REV.	DATE	SPEC/CHECK
632060	0	11-13-03	MKR/MKR
638636	1	9-17-08	MKR/MKR
639519	2	04-21-09	GAE/GAE

A. SEE PACKAGING MANUAL PAGE 2 FOR PACKAGING PROCEDURES.

1 MOTOR/CARTON;
32 MOTORS/LAYER;
6 LAYERS/PALLET;
192 MOTORS/PALLET.

B. SEE DRAWING 8785 6079 SH. 1 FOR PALLET LAYOUT.

C. CENTER CARTON LABEL, 6120 6603, ON END OF CARTON.

D. PLACE PAMPHLET, 6122 4579, IN CARTON WITH MOTOR.

71xx xxxxM

71xx xxxxC

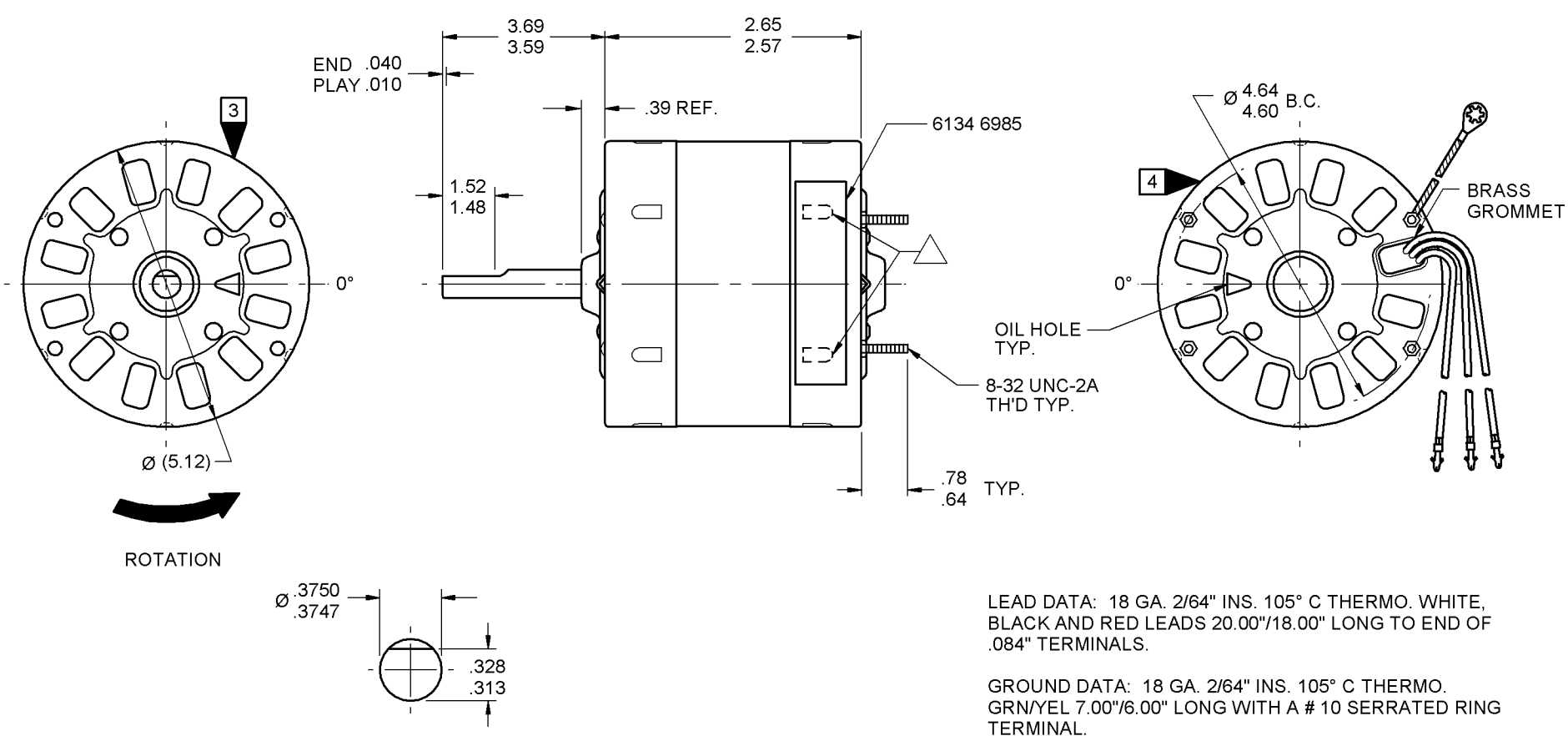
PRODUCTION TEST AT IDLE 115 VOLTS 60 HZ		MOTOR SPEED	PERFORMANCE TEST 115 VOLTS 60 HZ 1 PH 1/10 HP										
AMP	WATT		IDLE			LOADED				LOCKED			BREAK
			RPM	AMP	WATT	OZ/IN	RPM	AMP	WATT	OZ/IN	AMP	WATT	OZ/IN
3.64 — 2.98	215.6 — 176.4	HIGH	1179	3.31	196	102	1050	3.59	271	39	4.82	349	116
1.38 — 1.13	77.0 — 63.0	LOW	1178	1.25	70	44	1050	1.44	102	17	1.88	125	50

HI-POT TEST 2000 VOLTS
MAX LEAKAGE CURRENT 5 mA

7151 3928 MA

OPPOSITE LEAD END

LEAD END



LEAD DATA: 18 GA. 2/64" INS. 105° C THERMO. WHITE, BLACK AND RED LEADS 20.00"/18.00" LONG TO END OF .084" TERMINALS.

GROUND DATA: 18 GA. 2/64" INS. 105° C THERMO. GRN/YEL 7.00"/6.00" LONG WITH A # 10 SERRATED RING TERMINAL.

SPECIAL INSTRUCTIONS: SHAFT IS BONDERIZED. △ LANCES MUST BE COMPLETELY COVERED BY NAMEPLATE. MOTORS ARE TO BE SHIPPED WITH PROTECTIVE FIBER SLEEVES OVER PIN TERMINALS. PAMPHLET PACKED WITH MOTOR.

MOTORS PACKED MAX. PER SKID: ___ PALLET PACK, 192 CARTON PACK.

CUSTOMER: FASCO DISTRIBUTING CO. PROPRIETARY: DO NOT DUPLICATE OR DISCLOSE TO THIRD PARTIES WITHOUT WRITTEN PERMISSION OF FASCO IND. INC., ELDON MO.

PART NUMBER: D177 FASCO INDUSTRIES, INC. MOTOR DIVISION ELDON PLANT

APPLICATION	DIST. SALES	MOTOR TYPE	SHADED POLE								MOTOR NUMBER	REV.	
FINISH COLOR: GRAY			B	LA	FR	A	S	C	E	B	A	7151 3928 M	2
MOTOR WEIGHT: 5.75 LBS.			00	51	10	V	03	DP	6	5	0		
ENVIRONMENT: DRY													
INSULATION CLASS: A													

FASCO FASCO INDUSTRIES, INC. MOTOR DIVISION

V. 115 TYPE U51 A0 HZ 60 PH 1 ROT →

HP 1/10-1/20 RPM 1050 (2 SPD) NO. 7151-3928

AMP 3.9-1.7 THERMALLY PROTECTED

DATE/BAR CODE AREA PER 8882 6003

MODEL D177

SAFETY WARNING: THIS MOTOR MUST BE GROUNDED IN ACCORDANCE WITH LOCAL OR NATIONAL ELECTRICAL CODES TO PREVENT POSSIBLE INJURY DUE TO ELECTRICAL SHOCK

CONNECTION DIAGRAM: WHITE—LINE, BLACK-HI—LINE, RED-LO—LINE

6134 6985, M REV. 1

LOCATE NAMEPLATE .05 FROM EDGE OF LEAD END COVER TO READ RIGHT FROM LEAD END OF MOTOR CENTER AT 0°.

SIZE 4.00 X .75

If Printed, this is an Uncontrolled Document