

NOTES

1. THRU AIR SPACING BETWEEN WIRE AND METAL .063 MIN.
2. TIE BOLT TORQUE TOLERANCE 7 - 10 IN. LBS.
3. ROTOR FREENESS TO BE WITHIN 3/4 OZ. IN.
4. FOR WASHER SET-UP, SEE CHART C600 0279, DETAIL "H".
5. MAXIMUM 0.1 Ω RESISTANCE BETWEEN GROUND TERMINAL AND MOTOR FRAME.
6. LOCATE TOP LABEL, 6120 6085, AT 0° AS SHOWN TO READ RIGHT FROM LEAD END OF MOTOR.
7. SALES TO SPECIFY ON P.O. WHICH PACK TO USE.

ECO	REV.	DATE	SPEC/CHECK
638284	20	06-18-08	GAE/GAE
639599	21	5-4-09	MKR/MKR
630814	18	3-10-03	LDC/LDC
630953	19	4-7-03	LDC/LDC

A. SEE PACKAGING MANUAL PAGE 2 FOR PACKAGING PROCEDURE.

1 MOTOR/CARTON;  
40 MOTORS/LAYER;  
6 LAYERS/PALLET;  
240 MOTORS/PALLET.

B. SEE DRAWING 8785 6079 SH. 1 FOR PALLET LAYOUT.

C. CENTER LABEL, 6119 4002, ON END OF CARTON.

D. PLACE PAMPHLET, 6122 4579, IN CARTON WITH MOTOR.

71xx xxxxM

71xx xxxxC

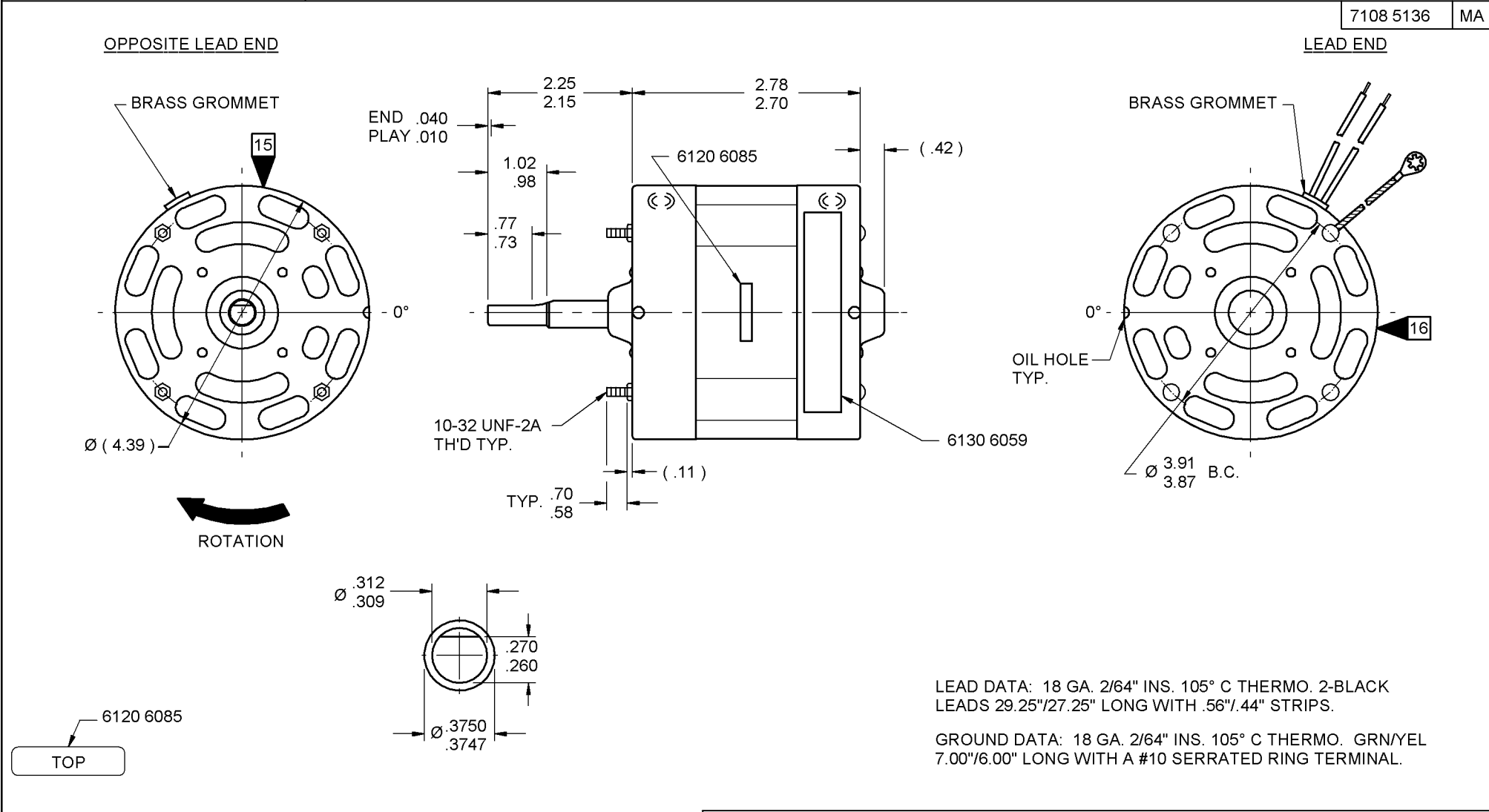
If Printed, this is an Uncontrolled Document

PRODUCTION TEST AT IDLE 115 VOLTS 60 HZ		MOTOR SPEED	PERFORMANCE TEST 115 VOLTS 60 HZ 1 PH 1/25 HP										
AMP	WATT		IDLE			LOADED				LOCKED			BREAK
			RPM	AMP	WATT	OZ/IN	RPM	AMP	WATT	OZ/IN	AMP	WATT	OZ/IN
1.54 — 1.26	86.9 — 71.1	HIGH	1730	1.4	79	30	1500	1.6	110	13	2.2	150	35

HI-POT TEST 2000 VOLTS  
MAX LEAKAGE CURRENT 5 mA

MOTORS MUST START WITH 90 VOLTS APPLIED TO LOWEST SPEED.

7108 5136 MA



7108 5136 = MADE IN U.S.A.  
7108 5136M = ASSEMBLED IN MEXICO

**FASCO** FASCO INDUSTRIES, INC. MOTOR DIVISION

V. 115 HZ 60 PH 1 TYPE U8 ROT RPM 1500  
HP 1/20 AO AMP 1.7

THERMALLY PROTECTED OSB NO. 7108-5136

DATE/BAR CODE AREA PER 8882 6003

**MODEL D170**

6130 6059, M REV. 10

**SAFETY WARNING**  
THIS MOTOR MUST BE GROUNDED IN ACCORDANCE WITH LOCAL OR NATIONAL ELECTRICAL CODES TO PREVENT POSSIBLE INJURY DUE TO ELECTRICAL SHOCK

LOCATE NAMEPLATE .03 FROM EDGE OF LEAD END COVER TO READ RIGHT FROM LEAD END OF MOTOR CENTER AT 0°.

SIZE 4.00 X .75

SPECIAL INSTRUCTIONS: SHAFT IS BONDERIZED. MECHANICALLY REVERSIBLE. PAMPHLET PACKED WITH MOTOR.			
MOTORS PACKED MAX. PER SKID: ___ PALLET PACK, 240 CARTON PACK.			
CUSTOMER: FASCO DISTRIBUTING CO.	PROPRIETARY: DO NOT DUPLICATE OR DISCLOSE TO THIRD PARTIES WITHOUT WRITTEN PERMISSION OF FASCO IND. INC., ELDON MO.		
PART NUMBER: D170	FASCO INDUSTRIES, INC. MOTOR DIVISION ELDON PLANT		
APPLICATION: DIST. SALES	MOTOR TYPE	MOTOR NUMBER	
FINISH COLOR: GRAY	SHADED POLE	7108 5136	
MOTOR WEIGHT: LBS.		M	
ENVIRONMENT: DRY		21	
INSULATION CLASS: A			
	B LA FR A S C E B A		
	00 08 10 V 01 0B 5 5 0		