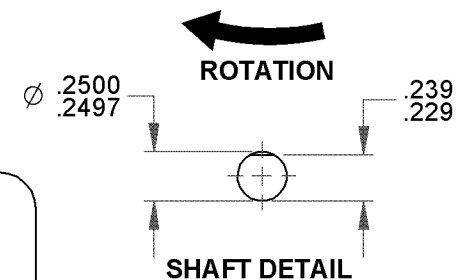
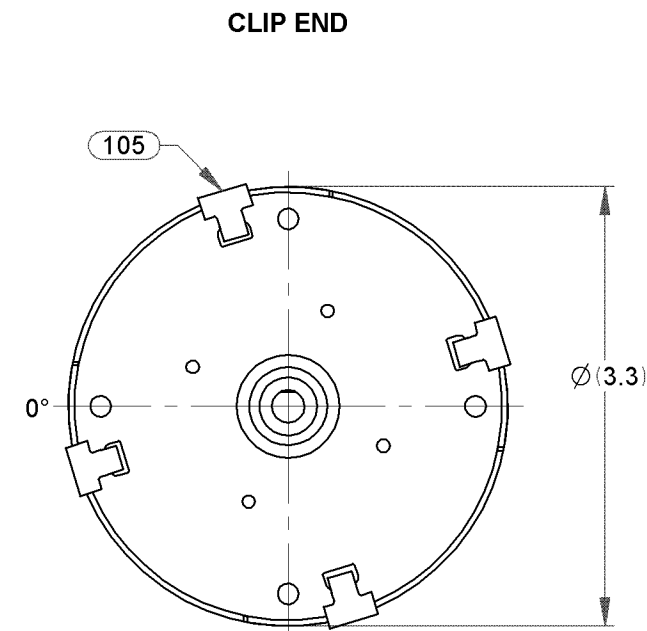
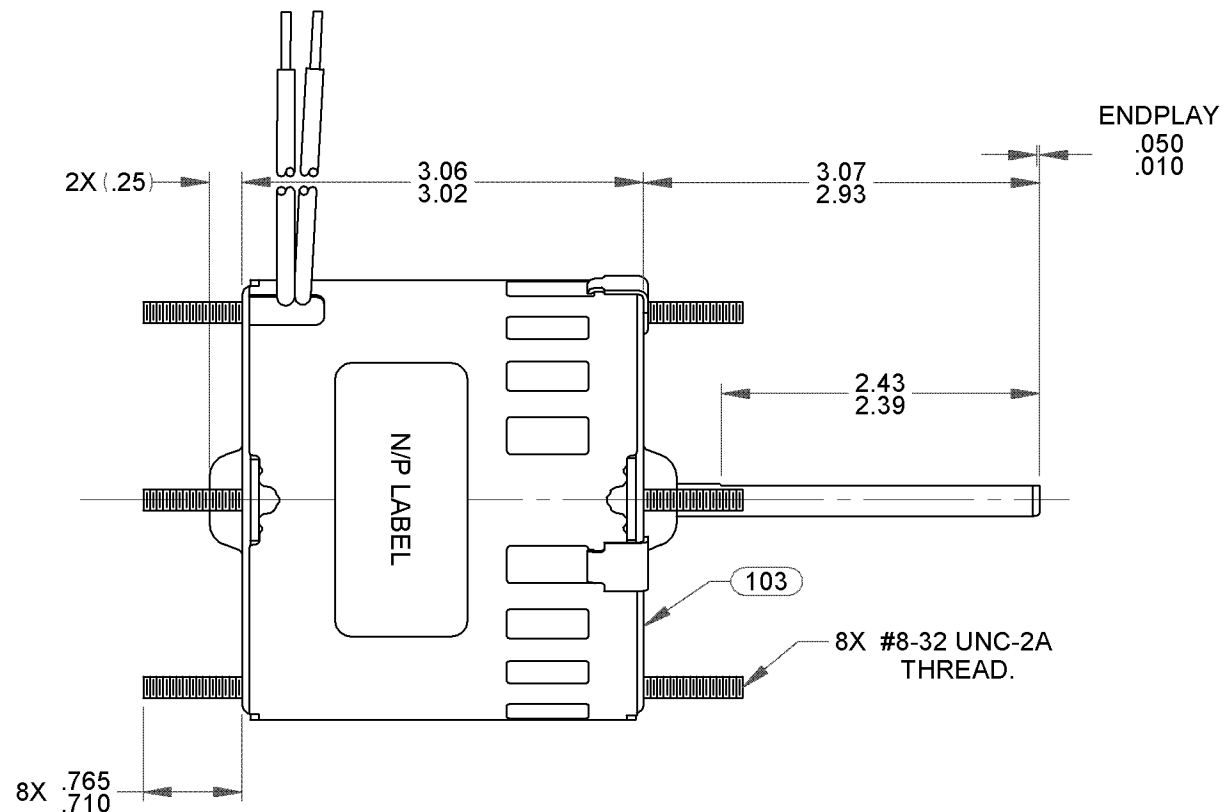
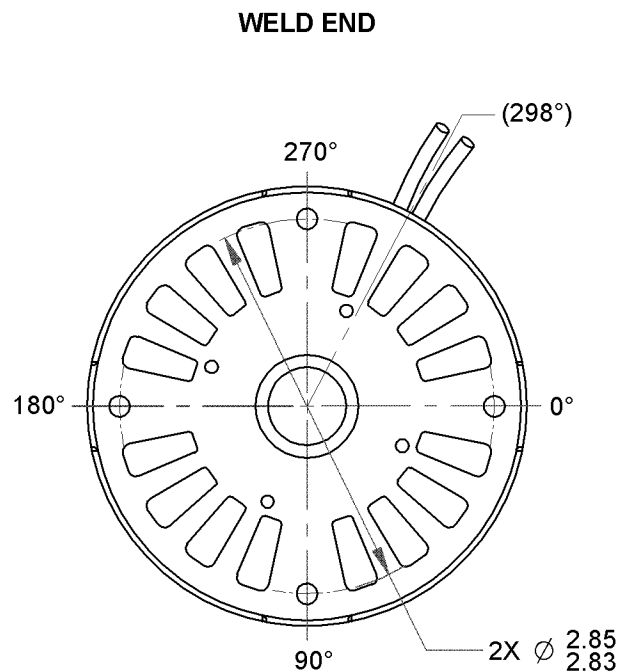


23	REVISED TO NEW N/P FORMAT	11/20/2007	24	REMOVE BARCODE AND UPDATE NAMEPLATE.	KSA 01-07-10	25	ADDED CARTON LABEL NOTES	4002726 MLM 7/22/11	STANDARD TOLERANCES: ANGULAR +/- 1 DEGREE 2 PLACE DECIMAL +/- .01 3 PLACE DECIMAL +/- .005
----	---------------------------	------------	----	--------------------------------------	--------------	----	--------------------------	------------------------	---



LEAD MATERIAL
18 GA. 125°C 2/64 INS.
X-LINK POLY., BLACK
14.00/12.00 IN. LONG
.56/.44 IN. STRIP

0046-4072

0046-4282

FASCO Motor Division

Assembled In Mexico

No. 71631489	TYPE U63B1	T.P. AO	LR6319
115 V	60 Hz	Class B	
0.7 A	1550 RPM	1/70 HP	
Model D167		Max Amb: 40°C	

Ⓢ Ⓜ ⓐ ⓐ ⓐ

SAFETY WARNING

This Motor Must Be Grounded in Accordance With Local Or National Electrical Codes To Prevent Possible Injury Due To Electrical Shock

NOTES:

PACK 270 MOTORS MAX. PER PALLET
NO PACKAGING TAPE OVER CARTON LABEL.

FRONT SHAFT POSITION	* TYPICAL PERFORMANCE AT 115 VOLTS 60 Hz.											CUSTOMER: FASCO DIST.	FASCO FASCO MOTORS GROUP AC MOTOR/BLOWER DIVISION										
HORIZONTAL UP DOWN	MOTOR SPEED	IDLE			LOADED			LOCKED			BREAK	PART NUMBER: D167	CONFIDENTIAL: DO NOT DUPLICATE OR DISCLOSE TO THIRD PARTIES WITHOUT WRITTEN PERMISSION OF FASCO MOTORS GROUP, AC MOTOR/BLOWER DIVISION.										
		R.P.M.	AMP.	WATT	IN.OZ.	R.P.M.	AMP.	WATT	IN.OZ.	AMP.	WATT	IN.OZ.	APPLICATION: COUNTER SALES	MOTOR TYPE			DRAWING NUMBER						
		1710	.65	40	10.4	1480	.70	52	5.3	.97	79	12.1	MOTOR WEIGHT: 2.16 LBS.	SHADED POLE			7163 1489						
CUSTOMER APPROVAL:													ENVIRONMENT: DRY	REV. 25									
SIGNED:													FINISH COLOR: BLACK	B	LA	FR	A	S	C	E	B	A	
DATE:													DRAWN BY: S. DALTON	00	63	30	F	01	OW	5	1	0	
													DATE DRAWN: 3-1-2002										