

NOTES

1. THRU AIR SPACING BETWEEN WIRE AND METAL .094 MIN.
2. TIE BOLT TORQUE TOLERANCE 7-12 IN. LBS.
3. FOR WASHER SET-UP, SEE CHART C600 0279, DETAIL "H".
4. LOCATE CONNECTION DIAGRAM, 6134 6699, ADJACENT TO AND RIGHT OF NAMEPLATE WITHIN .25" TO READ RIGHT FROM LEAD END OF MOTOR.
5. CONNECT THE TWO YELLOW REV. LEADS TOGETHER AND THE TWO PURPLE REV. LEADS TOGETHER. THIS WILL GIVE CCWLE ROTATION.
6. SALES TO SPECIFY ON P.O. WHICH PACK TO USE.

ECO	REV.	DATE	SPEC/CHECK
638291	5	6-20-08	MKR/MKR
639418	6	4-8-09	LDC/LDC
641318	7	6-15-10	MKR/MKR
642317	8	08-24-11	GAE/GAE

- A. SEE PACKAGING MANUAL PAGE 2 FOR PACKAGING PROCEDURES.
- 1 MOTOR/CARTON;
 - 24 MOTORS/LAYER;
 - 6 LAYERS/PALLET;
 - 144 MOTORS/PALLET.
- B. SEE DRAWING 8785 6079 SH. 1 FOR PALLET LAYOUT.
- C. CENTER LABEL, 6119 6705, ON END OF CARTON.
- D. PLACE PAMPHLET, 6122 4579, IN CARTON WITH MOTOR.



PRODUCTION TEST AT IDLE 277 VOLTS 60 HZ		MOTOR SPEED	PERFORMANCE TEST 277 VOLTS 60 HZ 1 PH 1/4 HP CAP. 5 MFD 370 VAC										
AMP	WATT		IDLE			LOADED				LOCKED			BREAK
			RPM	AMP	WATT	OZ/IN	RPM	AMP	WATT	OZ/IN	AMP	WATT	OZ/IN
.53 — .43	124.3 — 101.7	HIGH	1195	.48	113	280	1050	1.41	380	88	2.41	613	300
.36 — .30	90.2 — 73.8	MED. HIGH	1194	.33	82	207	1050	1.04	277	70	1.87	454	226
.28 — .23	69.3 — 56.7	MED. LOW	1193	.25	63	157	1050	.81	212	59	1.47	338	170
.22 — .18	58.3 — 47.7	LOW	1192	.20	53	124	1050	.65	167	41	1.20	264	138

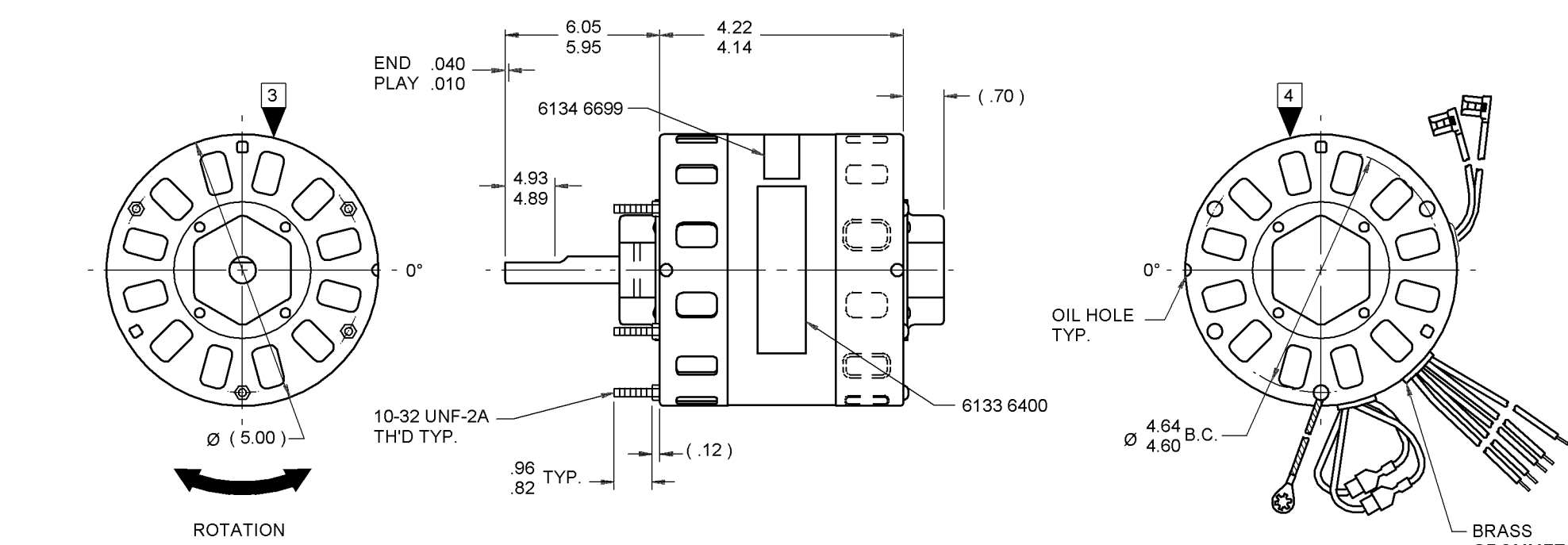
HI-POT TEST 2000 VOLTS
MAX LEAKAGE CURRENT 5 mA

TYPICAL PERFORMANCE SHOWN ABOVE FOR CCWLE ROTATION.

7186 0010 MA

OPPOSITE LEAD END

LEAD END



LEAD DATA: 18 GA. 4/64" INS. 105° C THERMO. WHITE, BLACK, BLUE, ORANGE AND RED LINE LEADS 32.00"/30.00" LONG WITH .56"/.44" STRIPS. BROWN AND BRN/WHT CAP. LEADS 16.00"/14.00" LONG WITH 1/4" FLAG TERMINALS.

REV. LEAD DATA: 18 GA. 2/64" INS. 105° C THERMO. 2 YELLOW AND 2 PURPLE 8.00"/6.00" LONG WITH 1/4" PRE-INSULATED Q.C. TERMINALS.

GROUND LEAD DATA: 18 GA. 2/64" INS. 105° C THERMO. GRN/YEL 7.00"/6.00" LONG WITH A #10 SERRATED RING TERMINAL.

ROTATION INSTRUCTIONS

SHAFT END CW	SHAFT END CCW
PURPLE → PURPLE	PURPLE → PURPLE
PURPLE → YELLOW	PURPLE → YELLOW
YELLOW → YELLOW	YELLOW → PURPLE
YELLOW → PURPLE	YELLOW → PURPLE

SAFETY WARNING

THIS MOTOR MUST BE GROUNDED IN ACCORDANCE WITH LOCAL OR NATIONAL ELECTRICAL CODES TO PREVENT POSSIBLE INJURY DUE TO ELECTRICAL SHOCK

FASCO FASCO INDUSTRIES, INC. MOTOR DIVISION ASSEMBLED IN MEXICO

MODEL D152

V. 277 HZ 60 PH 1 ROT →
HP 1/4-1/5-1/6-1/8 CAP 5 MFD 370 VAC
AMP 1.6-1.1-.9-.7 NO. 7186-0010
RPM 1050 (4 SPD) TYPE U186B1
INS CL B 40°C AMB AO

CONNECTION DIAGRAM
BRN — CAPACITOR
BRN/WHT —
WHT-COMM — LINE
BLK-HI —
BLU-M. HI —
ORG-M. LO —
RED-LO —

DATE/BAR CODE AREA PER 8882 6003 THERMALLY PROTECTED

6133 6400,R REV. 5

SPECIAL INSTRUCTIONS: SHAFT IS BONDERIZED. ROTOR IS RUSTPROOFED. PAMPHLET PACKED WITH MOTOR.

MOTORS PACKED MAX. PER SKID: PALLET PACK, 144 CARTON PACK.	
CUSTOMER: FASCO DISTRIBUTING CO.	PROPRIETARY: DO NOT DUPLICATE OR DISCLOSE TO THIRD PARTIES WITHOUT WRITTEN PERMISSION OF FASCO IND. INC., ELDON MO. FASCO INDUSTRIES, INC. MOTOR DIVISION ELDON PLANT
PART NUMBER: D152	
APPLICATION: DIST. SALES	MOTOR TYPE P.S.C.
FINISH COLOR: GRAY	
MOTOR WEIGHT: 11.0 LBS.	
ENVIRONMENT: WET	
INSULATION CLASS: B	
	MOTOR NUMBER 7186 0010 R
	REV. 8

LOCATE C OF NAMEPLATE ON C OF STATOR TO READ RIGHT FROM LEAD END OF MOTOR CENTER AT 0°.

SIZE 3.50 X 1.00