

NOTES:

1. THRU AIR SPACING BETWEEN WIRE AND METAL .10 MIN.
2. TIE BOLT TORQUE TOLERANCE 10 - 15 IN. LBS.
3. FOR WASHER SET-UP, SEE CHART C600 0279, DETAIL "H".
4. ROTOR FREENESS TO BE WITHIN 1 OZ. IN. TORQUE
5. ASSEMBLE SPACER, 8867 0172, BETWEEN LEAD END COVER AND NUT ON EACH TIE BOLT. GROUND TO BE ASSEMBLED BETWEEN SPACER AND COVER ON TIE BOLT AT 90° CWLE.
6. SALES TO SPECIFY ON P.O. WHICH PACK TO USE.

ECO	REV.	DATE	SPEC/CHECK
631741	32	9-11-03	JAK/RWS
634007	33	12-7-04	JAK/RWS
639190	34	03-11-09	GAE/GAE

A. SEE PACKAGING MANUAL PAGE 2 FOR PACKAGING PROCEDURES.

1 MOTOR/CARTON;  
32 MOTORS/LAYER;  
6 LAYERS/PALLET;  
192 MOTORS/PALLET.

B. SEE DRAWING 8785 6079 SH. 1 FOR PALLET LAYOUT.

C. CENTER LABEL, 6119 0848, ON END OF CARTON.

D. PLACE PAMPHLET, 6122 4579 IN CARTON WITH MOTOR.

71xx xxxx,M

71xx xxxx,C

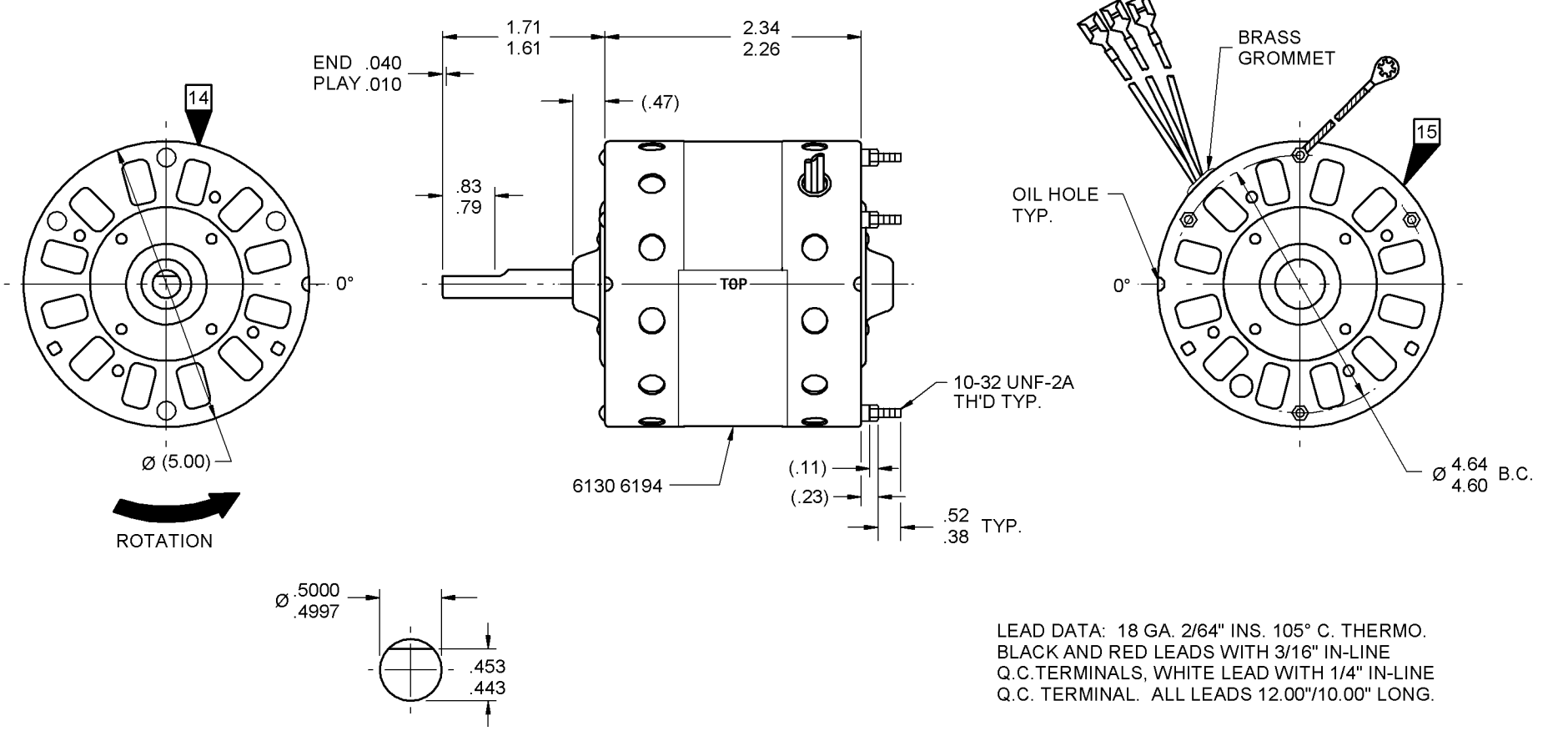
PRODUCTION TEST AT IDLE 115 VOLTS 60 HZ		MOTOR SPEED	PERFORMANCE TEST 115 VOLTS 60 HZ 1 PH 1/30 HP											
AMP	WATT		IDLE				LOADED				LOCKED			BREAK
			RPM	AMP	WATT	OZ/IN	RPM	AMP	WATT	OZ/IN	AMP	WATT	OZ/IN	
1.43 — 1.17	85.8 — 70.2	HIGH	1155	1.3	78	31	1050	1.4	97	17	1.8	123	40	
.99 — .81	57.2 — 46.8	LOW	1145	.9	52	20	1050	.9	64	13	1.2	81	28	

HI-POT TEST 2000 VOLTS  
MAX LEAKAGE CURRENT 5 mA

7151 0175 MA

OPPOSITE LEAD END

LEAD END



LEAD DATA: 18 GA. 2/64" INS. 105° C. THERMO. BLACK AND RED LEADS WITH 3/16" IN-LINE Q.C. TERMINALS, WHITE LEAD WITH 1/4" IN-LINE Q.C. TERMINAL. ALL LEADS 12.00"/10.00" LONG.

GROUND SATA: 18 GA. 2/64" 105° C THERMO. GRN/YEL 7.00"/6.00" LONG WITH A # 10 SERRATED RING TERMINAL.

7151 0175 = MADE IN U.S.A.  
7151 0175M = ASSEMBLED IN MEXICO

**FASCO** FASCO INDUSTRIES, INC. MOTOR DIVISION

MODEL D143

CONNECTION DIAGRAM  
WHITE — COMMON  
BLACK — HIGH  
RED — LOW

SAFETY WARNING  
THIS MOTOR MUST BE GROUNDED IN ACCORDANCE WITH LOCAL OR NATIONAL ELECTRICAL CODES TO PREVENT POSSIBLE INJURY DUE TO ELECTRICAL SHOCK

DATE/BAR CODE AREA PER 8882 6003

6130 6194,M REV. 9

SPECIAL INSTRUCTIONS: SHAFT IS BONDERIZED. PAMPHLET PACKED WITH MOTOR.			
MOTORS PACKED MAX. PER SKID: ___ PALLET PACK, 192 CARTON PACK.			
CUSTOMER: FASCO DISTRIBUTING CO.		PROPRIETARY: DO NOT DUPLICATE OR DISCLOSE TO THIRD PARTIES WITHOUT WRITTEN PERMISSION OF FASCO IND. INC., ELDON MO.	
PART NUMBER: D143		FASCO INDUSTRIES, INC. MOTOR DIVISION ELDON PLANT	
APPLICATION	DIST. SALES	MOTOR TYPE	MOTOR NUMBER
FINISH COLOR: GRAY		SHADED POLE	7151 0175
MOTOR WEIGHT: LBS.			M
ENVIRONMENT: DRY			
INSULATION CLASS: B			
			34

LOCATE  $\phi$  OF NAMPLATE ON  $\phi$  OF STATOR AND CENTERING "TOP" AT 0°, TO READ RIGHT FROM LEAD END OF MOTOR.  
SIZE 4.00 X .75