

NOTES:

1. THRU AIR SPACING BETWEEN WIRE AND METAL .063 MIN.
2. TIE BOLT TORQUE TOLERANCE 7-10 IN. LBS.
3. ROTOR FREENESS TO BE WITHIN 3/4 OZ. IN.
4. FOR WASHER SET-UP, SEE CHART C600 0279, DETAIL "H"
5. MAXIMUM 0.1 Ω RESISTANCE BETWEEN GROUND TERMINAL AND MOTOR FRAME.

ECO	REV.	DATE	SPEC/CHECK
631218	6	5-20-03	MKR/MKR
638650	7	9-22-08	MKR/MKR
639561	8	4-27-09	MKR/MKR
4009104	09	5/3/2013	NJP/SDM

71xx xxxx

A. SEE PACKAGING MANUAL PAGE 2 FOR PACKAGING PROCEDURES.

1 MOTOR/CARTON;
40 MOTORS/LAYER;
6 LAYERS/PALLET;
240 MOTORS/PALLET.

B. SEE DRAWING 8785 6079 SH. 1 FOR PALLET LAYOUT.

C. CENTER LABEL, 6122 9122, ON END OF CARTON.

D. PLACE PAMPHLET, 6122 4579, IN CARTON WITH MOTOR.

E. CARTON LABELS MUST ALL FACE ONE DIRECTION TOWARD THE OPEN END OF THE PALLET. SEE P.S. 88834408.

F. NO PACKAGING TAPE OVER CARTON LABEL.

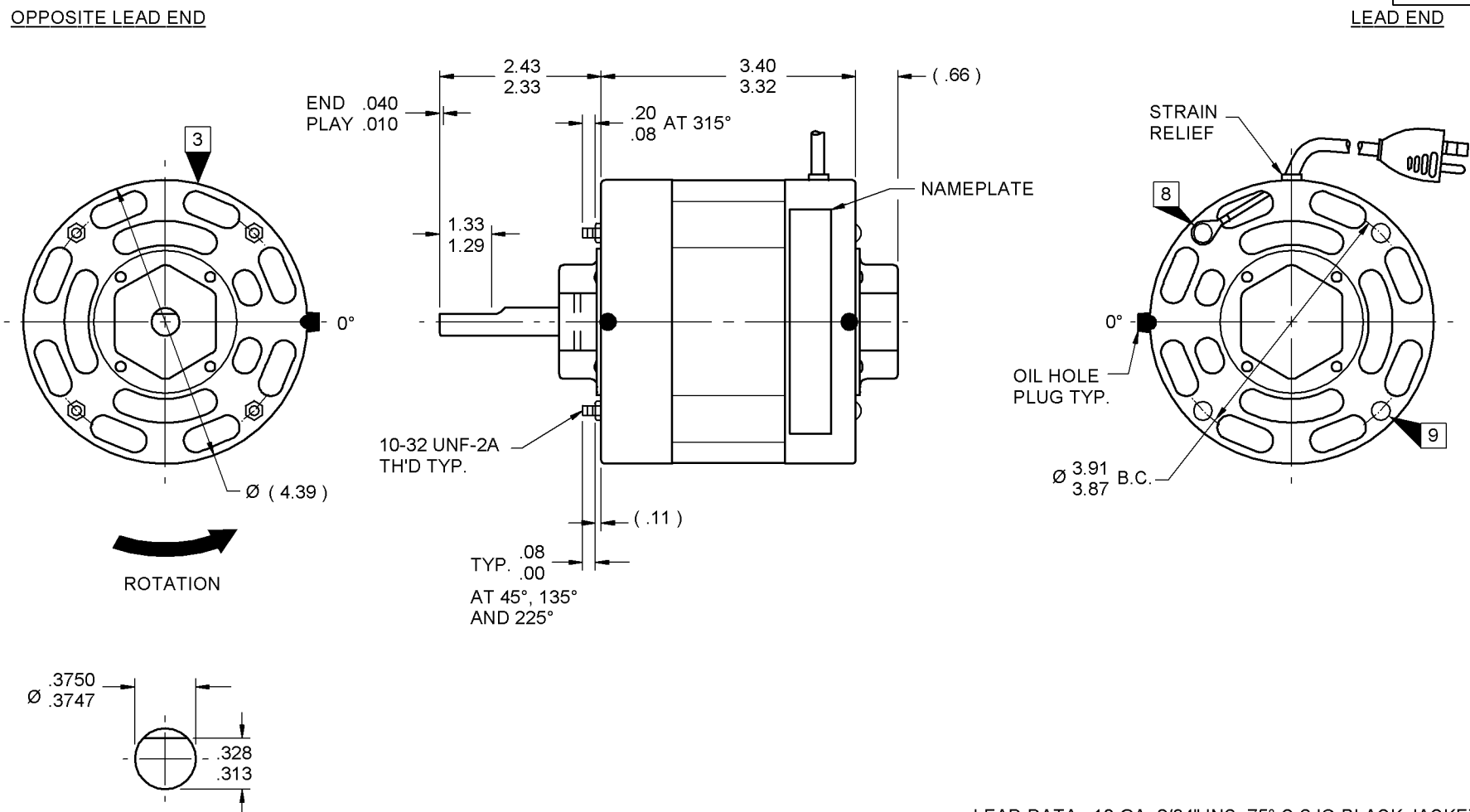
71xx xxxxC

PRODUCTION TEST AT IDLE 115 VOLTS 60 HZ		MOTOR SPEED	PERFORMANCE TEST 115 VOLTS 60 HZ 1 PH 1/15 HP										
AMP	WATT		IDLE			LOADED				LOCKED			BREAK
			RPM	AMP	WATT	OZ/IN	RPM	AMP	WATT	OZ/IN	AMP	WATT	OZ/IN
2.18 — 1.78	116.6 — 95.4	HIGH	1765	1.98	106	48	1550	2.34	162	20	3.28	209	56

HI-POT TEST 2000 VOLTS
MAX LEAKAGE CURRENT 5 mA

MOTORS MUST START WITH 90 VOLTS APPLIED TO LOWEST SPEED.

7108 6780 MA



LEAD DATA: 18 GA. 2/64" INS. 75° C SJO BLACK JACKETED CORDSET 9.75"/7.75" LONG TO END OF MOLDED PLUG.

SPECIAL INSTRUCTIONS: SHAFT IS BONDERIZED. ROTOR IS RUSTPROOFED. ATTACH GROUND LEAD UNDER TIE BOLT HEAD AS SHOWN. EDGE OF JACKET MUST BE INSIDE COVER. PAMPHLET PACKED WITH MOTOR.

MOTORS PACKED MAX. PER SKID: <u> </u> PALLET PACK, 240 CARTON PACK.	
CUSTOMER: FASCO DISTRIBUTING CO.	PROPRIETARY: DO NOT DUPLICATE OR DISCLOSE TO THIRD PARTIES WITHOUT WRITTEN PERMISSION OF FASCO IND. INC., ELDON MO. FASCO INDUSTRIES, INC. MOTOR DIVISION ELDON PLANT
PART NUMBER: D1246	
APPLICATION: DIST. SALES	MOTOR TYPE SHADED POLE
FINISH COLOR: GRAY	MOTOR NUMBER 7108 6780
MOTOR WEIGHT: 6.00 LBS.	REV. 09
ENVIRONMENT: WET	
INSULATION CLASS: A	

00464072 00464282

FASCO Motor Division

Assembled in Mexico

No. 71086780 TYPE U8
115 V 50/60 Hz
2.3 A 1550 RPM
Model D1246
Thermally Protected

AO PH 1
1/15 HP

SAFETY WARNING
This Motor Must Be Grounded in Accordance With Local Or National Electrical Codes To Prevent Possible Injury Due To Electrical Shock

61299553

LOCATE NAMEPLATE .10 FROM FACE OF LEAD END COVER TO READ RIGHT FROM LEAD END OF MOTOR CENTER AT 0°.

If Printed, this is an Uncontrolled Document.