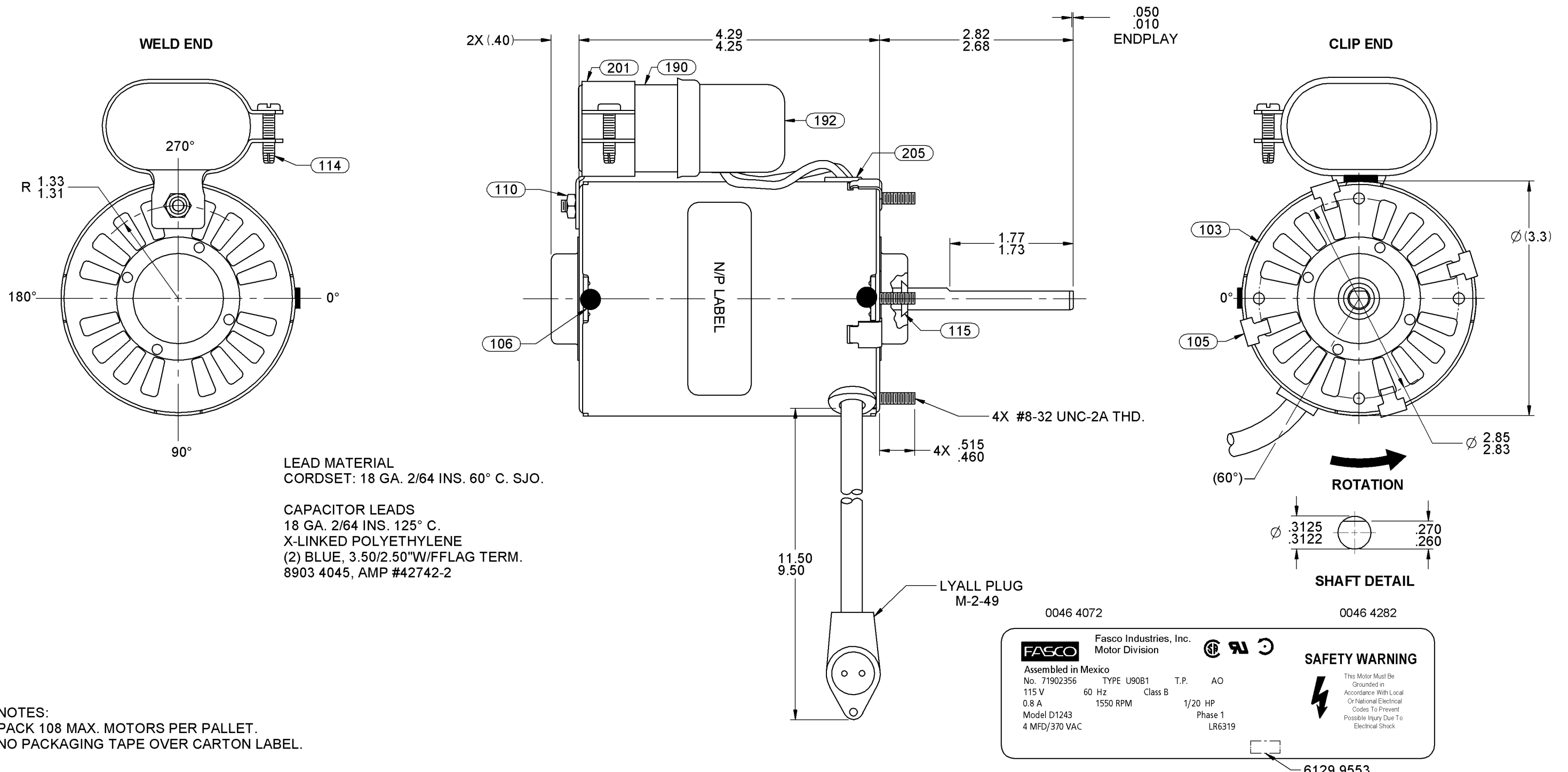


05	UPDATED TYPICAL PERFORMANCE	SD 12-5-05	06	REVISED N/P LABEL FORMAT AND TO CLINCH STUDS	SD 6-30-10	07	REVISED PACKING AND ADDED CARTON LABEL NOTES	4005706 MLM 06/11/12	STANDARD TOLERANCES: ANGULAR +/- 1 DEGREE 2 PLACE DECIMAL +/- .01 3 PLACE DECIMAL +/- .005
----	-----------------------------	------------	----	--	------------	----	--	-------------------------	---



LEAD MATERIAL  
CORDSET: 18 GA. 2/64 INS. 60° C. SJO.

CAPACITOR LEADS  
18 GA. 2/64 INS. 125° C.  
X-LINKED POLYETHYLENE  
(2) BLUE, 3.50/2.50"W/FFLAG TERM.  
8903 4045, AMP #42742-2

NOTES:  
PACK 108 MAX. MOTORS PER PALLET.  
NO PACKAGING TAPE OVER CARTON LABEL.

FASCO Industries, Inc. Motor Division

Assembled in Mexico

No. 71902356 TYPE U90B1 T.P. AO

115 V 60 Hz Class B

0.8 A 1550 RPM 1/20 HP

Model D1243 Phase 1

4 MFD/370 VAC LR6319

6129 9553

FRONT SHAFT POSITION	* TYPICAL PERFORMANCE AT 115 VOLTS 60 Hz.								CAP.: 4 MFD/370 VAC				CUSTOMER: FASCO DIST.	FASCO FASCO MOTORS GROUP AC MOTOR/BLOWER DIVISION									
HORIZONTAL 	MOTOR SPEED	IDLE			LOADED			LOCKED			BREAK	PART NUMBER: D1243	CONFIDENTIAL: DO NOT DUPLICATE OR DISCLOSE TO THIRD PARTIES WITHOUT WRITTEN PERMISSION OF FASCO MOTORS GROUP, AC MOTOR/BLOWER DIVISION.										
		R.P.M.	AMP.	WATT	IN.OZ.	R.P.M.	AMP.	WATT	IN.OZ.	AMP.	WATT	IN.OZ.	APPLICATION: FAN	MOTOR TYPE					DRAWING NUMBER				
CUSTOMER APPROVAL:												MOTOR WEIGHT: 4.80 LBS.	P.S.C.					7190 2356					
SIGNED:												ENVIRONMENT: WET	B	LA	FR	A	S	C	E	B	A	REV.	
DATE:												FINISH COLOR: BLACK	00	90	30	V	06	DY	5	4	0	07	
												DRAWN BY: TAMMY JONES											
												DATE DRAWN: JANUARY 20, 2003											

If Printed, this is an Uncontrolled Document.