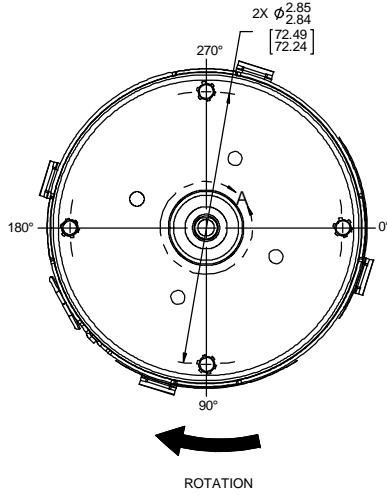
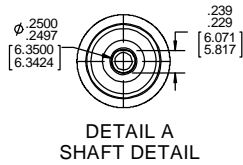
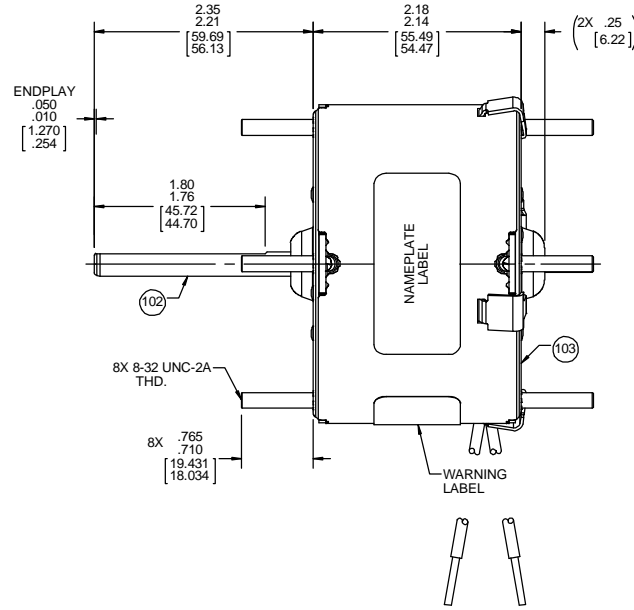
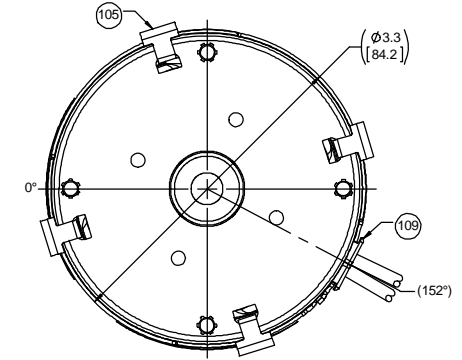


FRONT END



BACK END



LEAD MATERIAL
18 GA. 125°C 2/64 INSUL.
X-LINKED POLY. BLACK
14.00/12.00 [355.60/304.80]
.56/.44 [14.22/11.18] STRIP

NOTES:
1. NO PACKING TAPE OVER CARTON LABEL.

61305568

SAFETY WARNING
This motor must be grounded in accordance with local or national electrical codes to prevent possible injury due to electrical shock



AVERTISSEMENT DE SÉCURITÉ
Ce moteur doit être fondée sur conformément à la réglementation locale ou nationale électrique codes pour prévenir d'éventuelles blessures en raison de choc électrique

00464071

FASCO Fasco Industries, Inc. Motor Division

Assembled In Mexico
No. 71631482 TYPE U63B1 T.P. TEAO LR6319
115 V 60 Hz Class B
0.6 A 1500 RPM 1/80 HP
Model D122 Max Amb:40°C

61299553

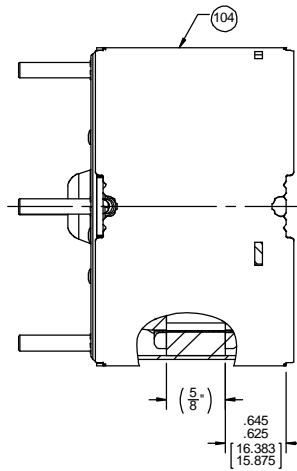
CUSTOMER:	FASCO DIST.	APPLICATION:	COUNTER SALES								
CUSTOMER PN:	D122	MOTOR WEIGHT:	2.06 LBS.								
	UP	ENVIRONMENT:	DRY								
HORIZONTAL	MOTOR TYPE				REFERENCE SAMPLE						
	SHADED POLE										
	B	LA	FR	A	S	C	E	B	A		
	00	63	30	T	01	HD	5	1	0		
	TYPICAL PERFORMANCE AT 115 VOLTS 60 HZ										
	IDLE			LOADED			LOCKED		BREAK		
MOTOR SPEED	RPM	AMP	WATT	IN OZ	RPM	AMP	WATT	IN OZ	AMP	WATT	IN OZ
	1710	.53	33	10.0	1580	.59	46	3.7	.78	63	9.7

DRAWING REVISION AA	REVISION BY SDM	DATE 1/31/2018	TOLERANCES UNLESS OTHERWISE SPECIFIED: DEC. INCH mm ANGLE .X ±0.1 [2.5] ±1° .XX ±0.01 [0.25] .XXX ±0.005 [0.127] .XXXX ±0.0005 [±0.0127]	DRAWN BY SDM	DATE 1/31/2018	DESCRIPTION REGAL™ Regal Beloit America, Inc.
ECO-0138624	APPROVED BY SED	DATE 1/31/2018	REMOVE BURRS & BREAK SHARP EDGES. .003/.015 [076/.381] X 45° CORNER FILLETS: R.02 [51] MACHINED SURFACES: .125/ 3.2 INCH/ mmv	APPROVED BY SED	DATE 1/31/2018	MATERIAL PROCESS/FINISH BLACK
DRAW ON SOLID WORKS COPYRIGHT REGAL BELOIT AMERICA, INC. ALL RIGHTS RESERVED. PROPRIETARY AND CONFIDENTIAL INFORMATION. THIS DOCUMENT IS THE PROPERTY OF REGAL BELOIT AMERICA, INC. FORMERLY AND CONTAINS OWNERS PROPRIETARY INFORMATION. ANY PERSON, CORPORATION OR OTHER FIRM RECEIVING IT IS DEEMED BY RECEIVING IT, TO AGREE THAT IT, AND/OR ANY PART OF IT, SHALL NOT BE DISCLOSED TO ANY PERSON, CORPORATION OR OTHER ENTITY, DUPLICATED, AND/OR USED, EXCEPT AS EXPRESSLY APPROVED IN WRITING IN ADVANCE BY OWNER. THIS DOCUMENT SHALL BE RETURNED TO OWNER UPON REQUEST. IT MAY BE SUBJECT TO CERTAIN RESTRICTIONS UNDER APPLICABLE EXPORT CONTROL LAWS AND REGULATIONS.			THIRD ANGLE PROJECTION	SIZE C	DRAWING NUMBER 71631482	SHEET 1 OF 2

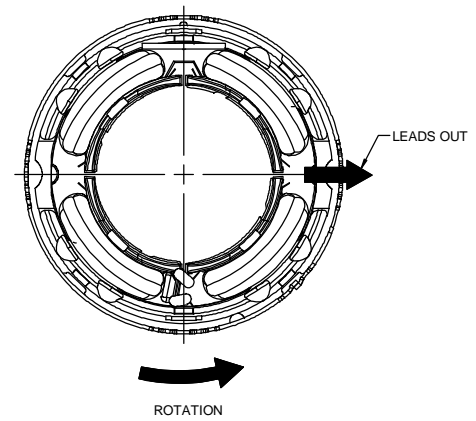
NOTES:

1. STAKE STATOR TO MAIN FRAME PER 88830264.
2. MAXIMUM TORQUE TO TURN MOTOR IS 1/4 INCH-OUNCE.
3. MAKE-UP WASHERS ARE TO BE ADDED OR DELETED TO ACHIEVE REQUIRED ENDPLAY.

FRONT END



BACK END



PACKING SPECIFICATIONS

1. PACK 1 PER CONTAINER, 45 CONTAINERS PER LAYER, 6 LAYERS PER PALLET, 270 MAX. PER PALLET, PER 88834200.
2. PLACE FOAM RING ON CLINCH STUDS ON CLIP END OF MOTOR AND FILLER TUBE OVER SHAFT EXTENSION. PLACE MOTOR IN CONTAINER WITH SHAFT UP. CLOSE FLAPS AND TAPE.
3. CARTON LABELS MUST ALL FACE ONE DIRECTION TOWARD THE OPEN END OF THE PALLET, PER 88834408.
4. PLACE (1) FLAT PAD BETWEEN EACH LAYER AND (1) ON TOP.
5. PLACE ALL INSPECTION STICKERS AND WRITING ON TOP FLAT PAD.

DRAWING REVISION AA		REVISION BY SDM	DATE 1/31/2018	TOLERANCES UNLESS OTHERWISE SPECIFIED: DEC. INCH mm ANGLE		DRAWN BY SDM	Regal Beloit America, Inc.	
ECO ECO-0138624	APPROVED BY SED	DATE 1/31/2018	.X ±0.1 [±2.5] ±1° .XX ±0.01 [±0.25] .XXX ±0.005 [±0.127] .XXXX ±0.0005 [±0.0127]	DATE 1/31/2018	APPROVED BY SED	DESCRIPTION OUTLINE MOTOR ASSY		
DRAW ON SOLID WORKS				REMOVE BURRS & BREAK SHARP EDGES: .003/.015 [0.076/.381] X 45° CORNER FILLETS: R.02 [.51]	REFERENCE	MATERIAL	PROCESS/FINISH BLACK	
<small> COPYRIGHT REGAL BELOIT AMERICA, INC. ALL RIGHTS RESERVED. PROPRIETARY AND CONFIDENTIAL INFORMATION. THIS DOCUMENT IS THE PROPERTY OF REGAL BELOIT AMERICA, INC. FORMERLY AND CONTAINS OWNERS PROPRIETARY INFORMATION. ANY PERSON, CORPORATION OR OTHER FIRM RECEIVING IT IS DEEMED BY RECEIVING IT, TO AGREE THAT IT, AND/OR ANY PART OF IT, SHALL NOT BE DISCLOSED TO ANY PERSON, CORPORATION OR OTHER ENTITY, DUPLICATED, AND/OR USED, EXCEPT AS EXPRESSLY APPROVED IN WRITING IN ADVANCE BY OWNER. THIS DOCUMENT SHALL BE RETURNED TO OWNER UPON REQUEST. IT MAY BE SUBJECT TO CERTAIN RESTRICTIONS UNDER APPLICABLE EXPORT CONTROL LAWS AND REGULATIONS. </small>				MACHINED SURFACES: 1/25 / 3.2 INCH/ mm SHOWN IN [BRACKETS]	THIRD ANGLE PROJECTION	SIZE C	DRAWING NUMBER 71631482	SHEET 2 OF 2