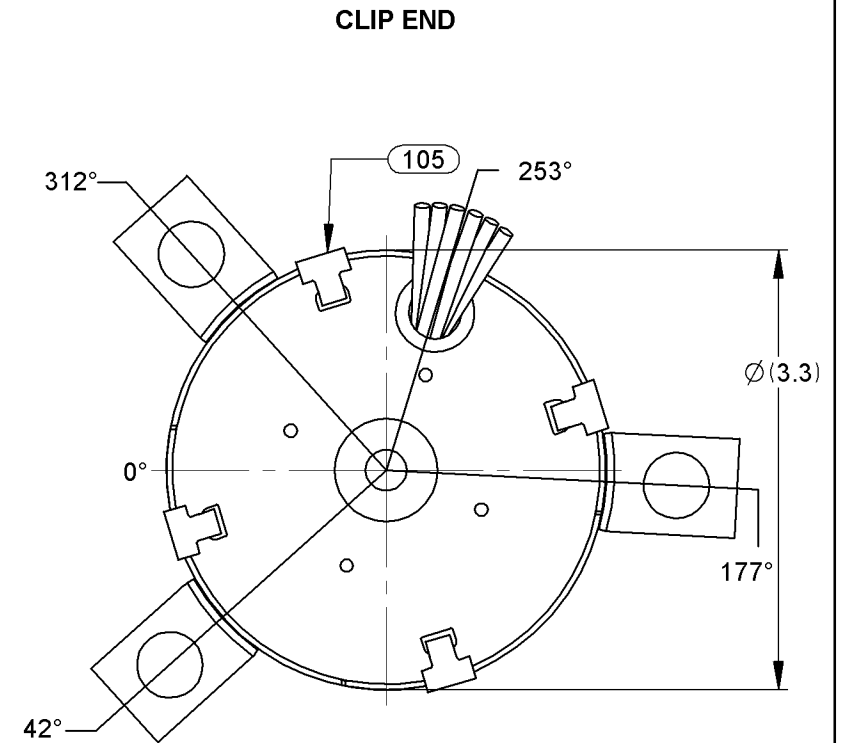
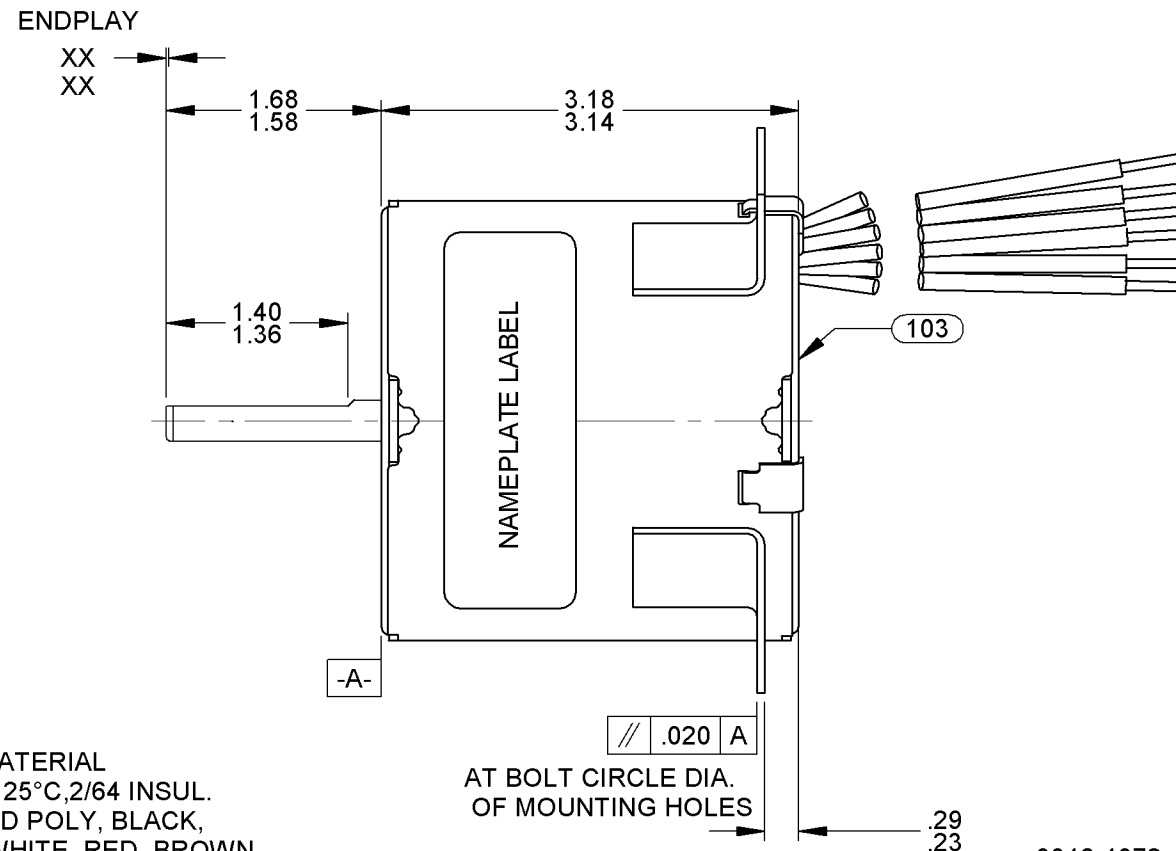
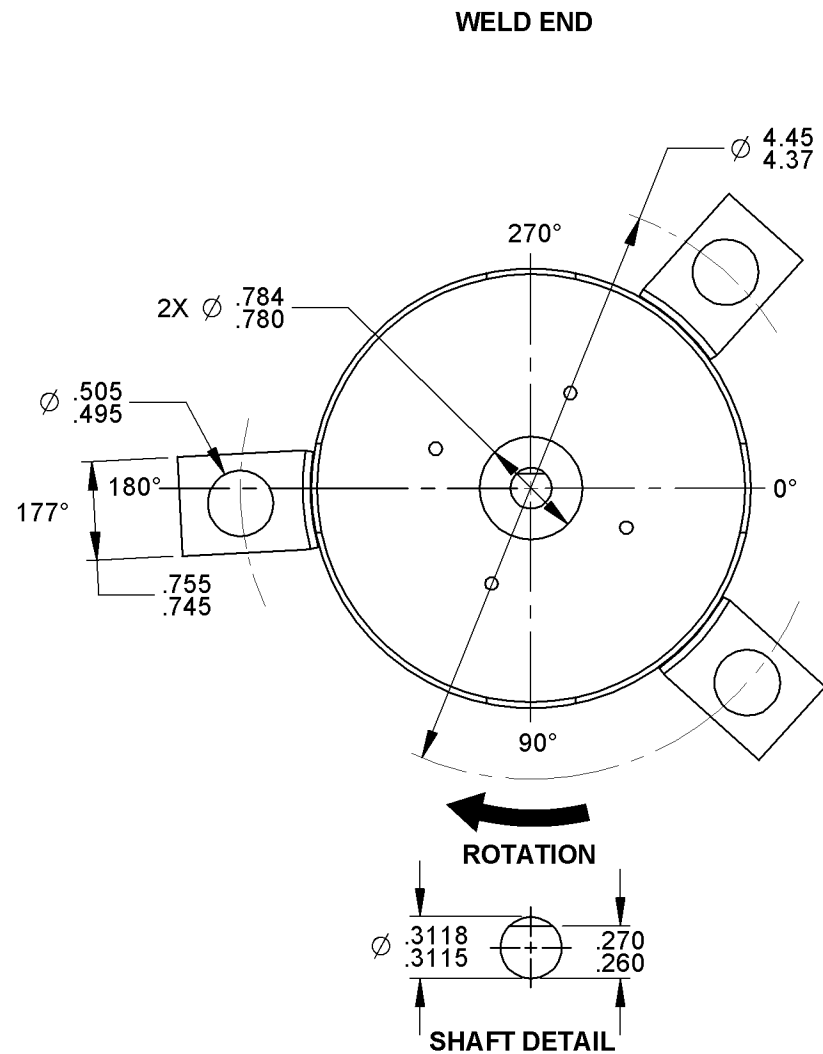


11	REVISED LABEL LAYOUT, ADDED PC MARKERS, REVISED NOTES VLL 10-16-07	12	REMOVED BARCODE FROM NAMEPLATE PLA 11/05/09	13	REVISED PACKING AND ADDED CARTON LABEL NOTES 4004847 MLM 03/08/12	STANDARD TOLERANCES: ANGULAR +/- 1 DEGREE 2 PLACE DECIMAL +/- .01 3 PLACE DECIMAL +/- .005
----	---	----	--	----	---	---



6129-4832

SAFETY WARNING

This Motor Must Be Grounded In Accordance With Local Or National Electrical Codes To Prevent Possible Injury Due To Electrical Shock

PLACE WARNING LABEL IN A CONVENIENT LOCATION

0046-4072

FASCO Fasco Industries, Inc. Motor Division

Assembled in Mexico

No. 71639844 TYPE U63B1 T.P. TEAO LR6319
115/208-230 V 60/50 Hz Class B (1spd)
1.6/0.8 A 1550/1350 RPM 1/20 HP
Model D1189 Max Amb: 40°C
Sealed Ball Brg

61299553

Connection Diagram

115 V~ 208-230 V~

Blk — Line Blk — Line
Blu — Line Blu — Line
Wht — Line Wht — Line
Red — Line Red — Line
Brn — Ins Brn — Ins
Grn/Yel — Grd Grn/Yel — Grd

NOTES:

120 MAX. MOTORS PER PALLET.
NO PACKAGING TAPE OVER CARTON LABEL.

FRONT SHAFT POSITION	* TYPICAL PERFORMANCE AT 115/230 VOLTS 50/60 Hz.											CUSTOMER: FASCO DIST.	FASCO FASCO MOTORS GROUP AC MOTOR/BLOWER DIVISION		
HORIZONTAL UP DOWN	MOTOR SPEED	IDLE			LOADED			LOCKED			BREAK	PART NUMBER: D1189		CONFIDENTIAL: DO NOT DUPLICATE OR DISCLOSE TO THIRD PARTIES WITHOUT WRITTEN PERMISSION OF FASCO MOTORS GROUP, AC MOTOR/BLOWER DIVISION.	
CUSTOMER APPROVAL:		R.P.M.	AMP.	WATT	IN.OZ.	R.P.M.	AMP.	WATT	IN.OZ.	AMP.	WATT	IN.OZ.	APPLICATION:	MOTOR TYPE	DRAWING NUMBER
SIGNED:	115 V 50 Hz	1475	1.38	75	32.8	1350	1.51	109	15.4	2.21	173	43.2	MOTOR WEIGHT: 3.91 POUNDS	SHADED POLE	7163 9844
DATE:	115 V 60 Hz	1774	1.17	66	31.8	1550	1.45	108	11.4	1.95	140	32.9	ENVIRONMENT: DRY	B	LA
	230 V 50 Hz	1475	.70	74	32.5	1350	.75	107	15.8	1.11	170	43.4	FINISH COLOR: BLACK	FR	A
	230 V 60 Hz	1778	.59	62	32.0	1550	.72	106	10.9	.97	139	33.3	DRAWN BY: TAMMY JONES	S	C
													DATE DRAWN: DECEMBER 10, 2001	E	B
														A	REV.
														00	13
														63	
														33	
														T	
														06	
														KT	
														5	
														0	
														0	