

4

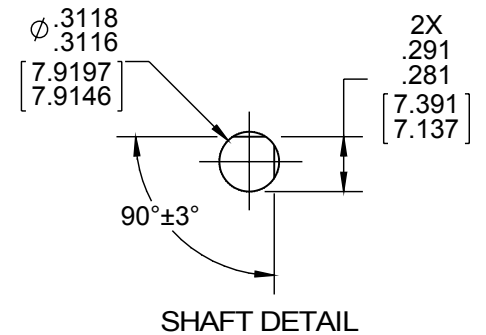
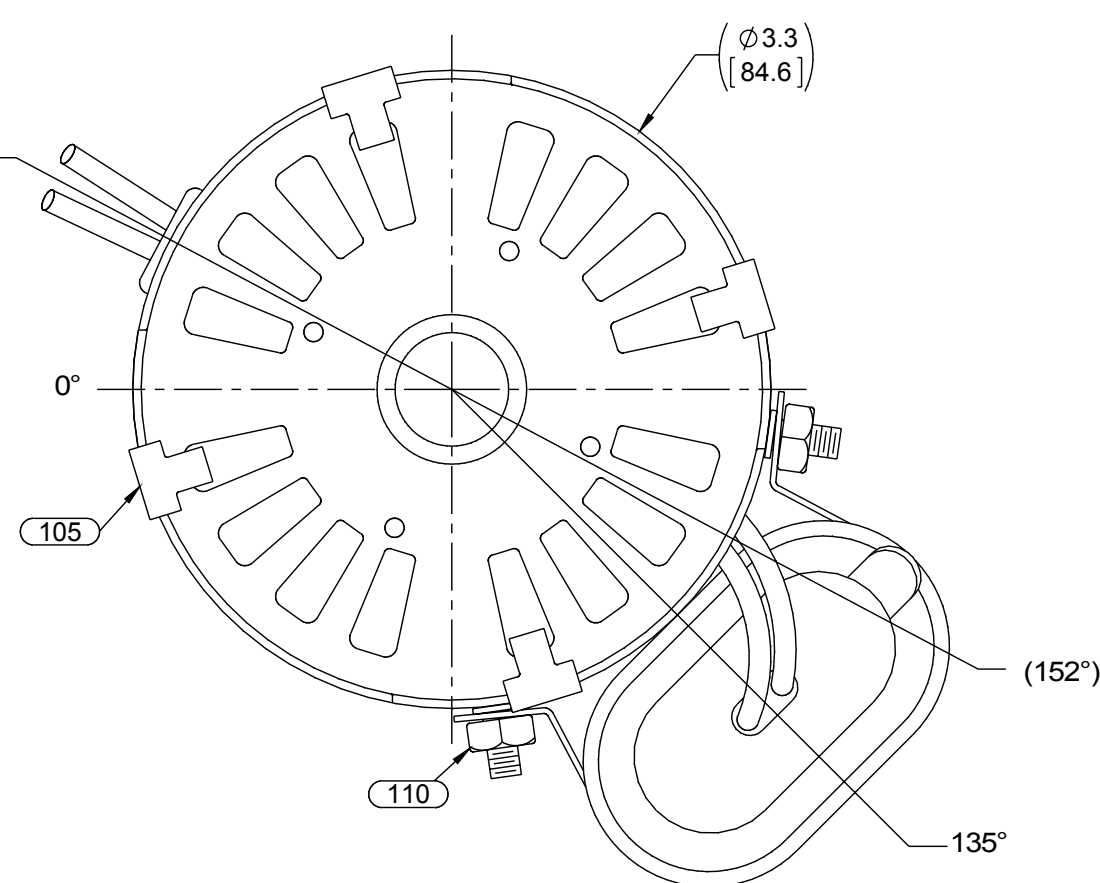
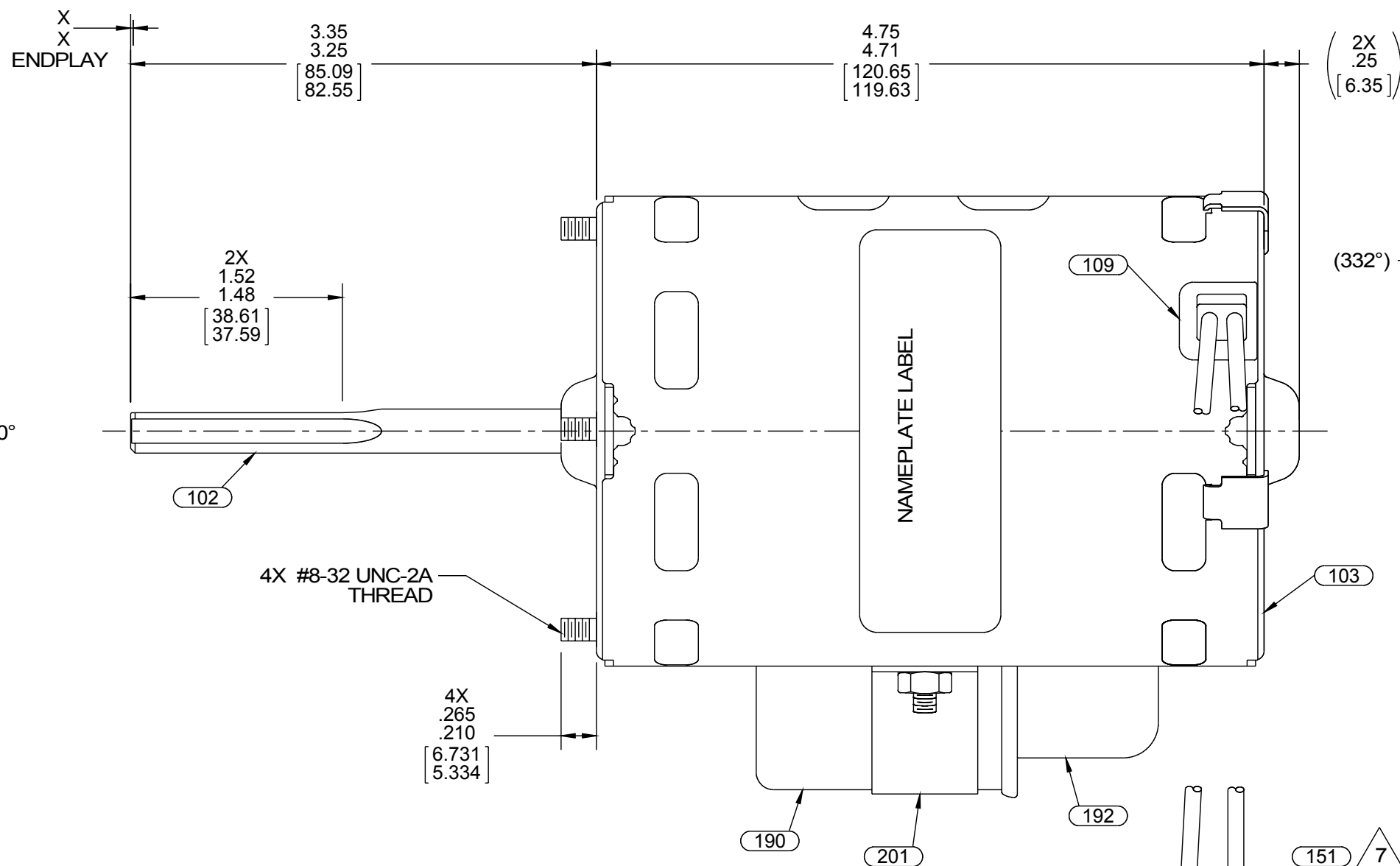
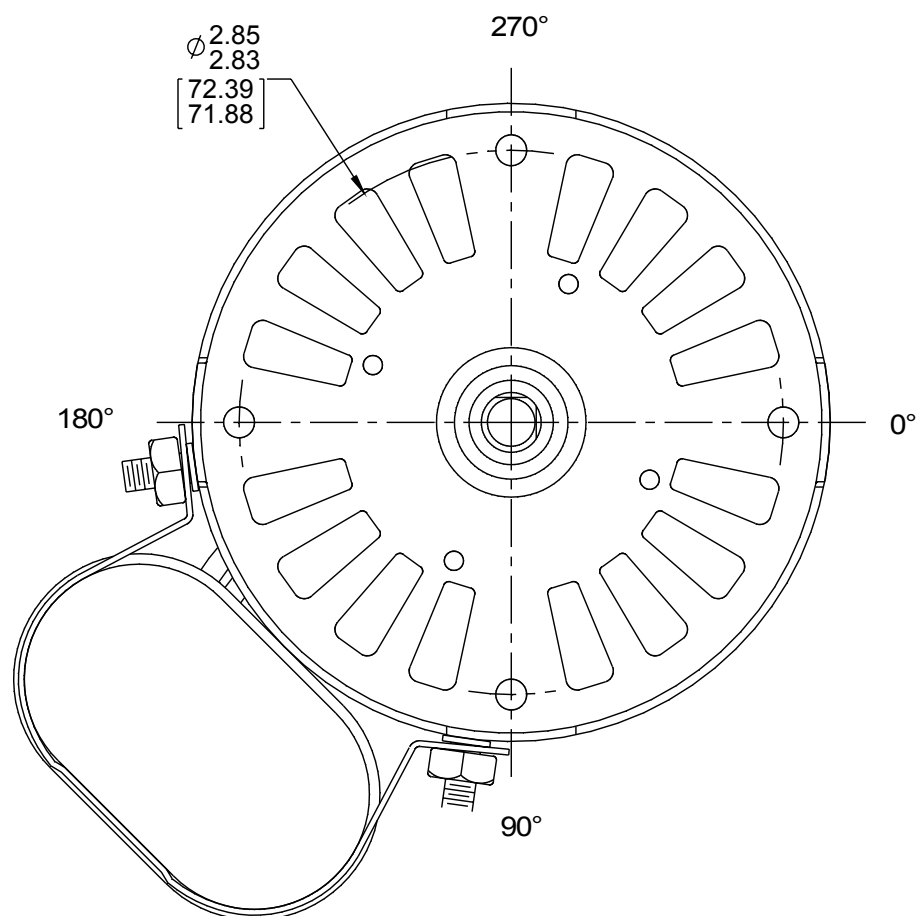
3

2

1

WELD END

CLIP END



LEAD MATERIAL

18 GA. 2/64 INS. 125° C.
X-LINKED POLYETHYLENE
BLACK, YELLOW, 54.00 / 50.00[1371.60/1270.00]
W/FSPADE TERM. 8903 9008
AMP 42660-2

CAPACITOR LEADS

BROWN, 3.75 / 2.75[95.25/69.85]
W/FLAG TERM
AMP 2-520128-2

6129 4176

WARNING
WHEN OPERATED ON 460 V.
SPECIAL CARE SHOULD BE
TAKEN WITH HANDLING,
CONNECTIONS AND GROUNDING
TO AVOID SHOCK HAZARD.

NOTES:
CAPACITOR MUST NOT EXTEND PAST EITHER END OF MOTOR.
SHAFT IS 416 STAINLESS STEEL.
PACK 126 MAX. MOTORS PER PALLET.
NO PACKAGING TAPE OVER CARTON LABEL.

0046 4072

0046 9128

SAFETY WARNING
This motor must be grounded in accordance with local or national electrical codes to prevent possible injury due to electrical shock

AVERTISSEMENT DE SÉCURITÉ
Ce moteur doit être fondée sur conformément à la réglementation locale ou national électrique codes pour prévenir d'éventuelles blessures en raison de choc électrique

FASCO Fasco Industries, Inc. Motor Division
Assembled in Mexico
No. 71624403 TYPE U62HV1B1 AO LR6319
460 V 60 Hz Class B
0.3 A 3450 RPM 1/16 HP
Model D1186
Thermally Protected
Sealed Ball Brg

Connection Diagram
Blk — Line
Yel — Line
Brn —
Brn —

4 MFD/ 370 VAC

APPLY IN A CONVENIENT LOCATION TO READ FROM CLIP END

CUSTOMER PN:	D1186	ENVIRONMENT:	WET
CUSTOMER:	FASCO DIST.	APPLICATION:	FURNACE
		MOTOR WEIGHT:	4.75 LBS.

SIGNED:	DATE:	CUSTOMER APPROVAL	FRONT SHAFT POSITION	MOTOR TYPE						REFERENCE SAMPLE NUMBER		
				P.S.C.						71624403		
			UP	B	LA	FR	A	S	C	E	B	A
			HORIZONTAL	00	62	30	V	06	FW	5	0	0

MOTOR SPEED	TYPICAL PERFORMANCE AT 460 VOLTS 60 HZ											
	IDLE			FULL LOAD			LOCKED			BREAK		
	RPM	AMP	WATT	IN OZ	RPM	AMP	WATT	IN OZ	AMP	WATT	IN OZ	IN OZ
	3570	.16	71	23.3	3450	.26	119	17.2	.69	315	49.7	

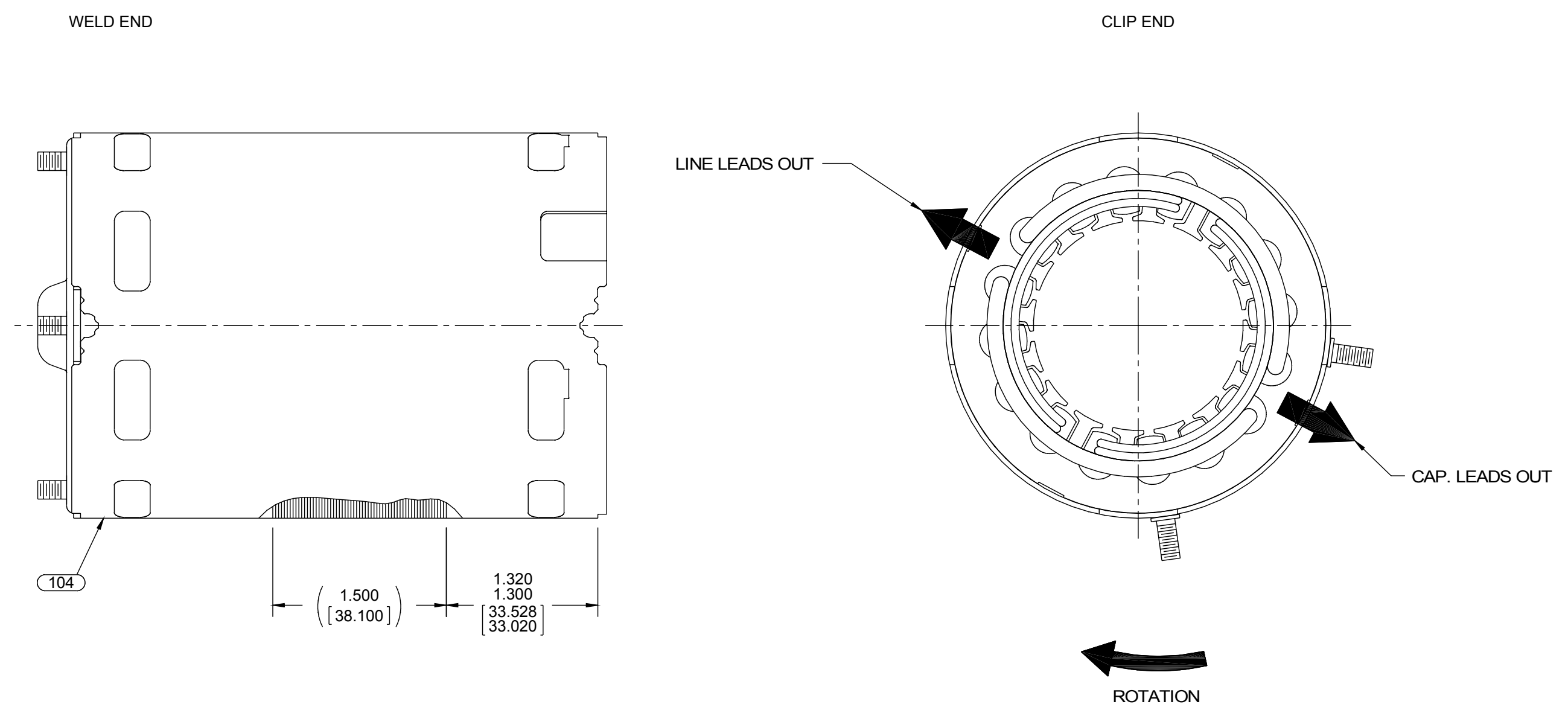
DRAWING REVISION H	REVISION BY G.ZHAO	DATE 08-27-2015	TOLERANCES UNLESS OTHERWISE SPECIFIED: DEC. INCH mm ANGLE .X ±0.1 [±2.5] .XX ±0.01 [±0.25] XXX ±0.005 [±0.127] .XXXX ±0.0005 [±0.0127]	DRAWN BY S.M.MAGGARD	REGAL™ Regal Beloit America, Inc.
ECO-0083799	APPROVED BY C.ZHANG	DATE 08-27-2015	REMOVE BURRS & BREAK SHARP EDGES: 003/015 [076/381] X 45° CORNER FILLETS: R.02 [51] MACHINED SURFACES: 125/ INCH 3.2/ mm	DATE 11-03-2003	DESCRIPTION MODEL-SFHP-3.3 OUTLINE
SEE ECO				APPROVED BY	MATERIAL
COPYRIGHT REGAL BELOIT AMERICA, INC. ALL RIGHTS RESERVED. PROPRIETARY AND CONFIDENTIAL INFORMATION - THIS DOCUMENT IS THE PROPERTY OF REGAL BELOIT AMERICA, INC. (OWNER) AND CONTAINS OWNER'S PROPRIETARY INFORMATION. ANY PERSON, CORPORATION OR OTHER FIRM RECEIVING IT IS DEEMED, BY RECEIVING IT, TO AGREE THAT IT, AND/OR ANY PART OF IT, SHALL NOT BE DISCLOSED TO ANY PERSON, CORPORATION OR OTHER ENTITY, DUPLICATED, AND/OR USED, EXCEPT AS EXPRESSLY APPROVED IN WRITING IN ADVANCE BY OWNER. THIS DOCUMENT SHALL BE RETURNED TO OWNER UPON REQUEST. IT MAY BE SUBJECT TO CERTAIN RESTRICTIONS UNDER APPLICABLE EXPORT CONTROL LAWS AND REGULATIONS.				DATE	PROCESS/FINISH BLACK
				REFERENCE	THIRD ANGLE PROJECTION
				SIZE C	DRAWING NUMBER 71624403
					SHEET 1 OF 2

4

3

2

1



NOTES:

1. STAKE STATOR TO SLEEVE PER P. S. 8883 0264.
2. MAXIMUM TORQUE REQUIRED TO TURN MOTOR SHAFT IS 3/8 INCH-OUNCE.
3. ASSEMBLE SPRING BETWEEN WASHER AND BEARING ON WELD END, WITH SPRING FINGERS TOWARD BEARING.
4. ASSEMBLE BALL BEARINGS TO BEARING RETAINERS PER WORK CENTER PROCESS.
5. CUT CAPACITOR LEADS TO LENGTH, RESTRIP TO .40 ±.06[10.16±1.52] AND ATTACH TERMINALS IN FINAL.
6. ATTACHED TERMINALS MUST MEET SPECS ON PROCESS STANDARD.
7. ASSEMBLE TUBING OVER TERMINALS ON YELLOW & BLACK LEADS, FLUSH +.00 -.06[+.00 -1.52] AND SHRINK.
8. BRING LINE LEADS DIRECTLY OUT LEAD EXIT. IGNORE POSITION OF OTHER LEADS. THEY WILL ROTATE BACK TO THEIR LEAD EXIT.
9. MOTOR MUST BE TESTED WITH HIPOT VOLTAGE SET AT 2300V.

PACKING SPECIFICATIONS

1. PACK PER P. S. 8883 4200. 1 PER CARTON, 24 PER LAYER, 120 PER PALLET.
2. PLACE FOAM RING ON CLIP END OF MOTOR AND FILLER TUBE OVER SHAFT EXTENSION. PLACE MOTOR IN CARTON.
3. PLACE PAPER AROUND MOTOR TO PREVENT MOVEMENT DURING SHIPMENT. CLOSE FLAPS AND TAPE.
4. CARTON LABELS MUST ALL FACE ONE DIRECTION TOWARD THE OPEN END OF THE PALLET. SEE P.S. 8883 4408

DRAWING REVISION H	REVISION BY G.ZHAO	DATE 08-27-2015	TOLERANCES UNLESS OTHERWISE SPECIFIED: DEC. INCH mm ANGLE .X ±0.1 [±2.5] ±0.5° .XX ±0.01 [±0.25] .XXX ±0.005 [±0.127] .XXXX ±0.0005 [±0.0127]	DRAWN BY S.M.MAGGARD	Regal Beloit America, Inc.
ECO ECO-0083799	APPROVED BY C.ZHANG	DATE 08-27-2015	DATE 11-03-2003	APPROVED BY	
ECO DESCRIPTION SEE ECO			EDGE: 003/015 [076/381] X 45° CORNER FILLETS: R.02 [51] MACHINED SURFACES: 125/ mm 3.2/ INCH	DATE	DESCRIPTION MODEL-SFHP-3.3 OUTLINE
<small>COPYRIGHT REGAL BELOIT AMERICA, INC. ALL RIGHTS RESERVED. PROPRIETARY AND CONFIDENTIAL INFORMATION - THIS DOCUMENT IS THE PROPERTY OF REGAL BELOIT AMERICA, INC. (OWNER) AND CONTAINS OWNER'S PROPRIETARY INFORMATION. ANY PERSON, CORPORATION OR OTHER FIRM RECEIVING IT IS DEEMED, BY RECEIVING IT, TO AGREE THAT IT, AND/OR ANY PART OF IT, SHALL NOT BE DISCLOSED TO ANY PERSON, CORPORATION OR OTHER ENTITY, DUPLICATED, AND/OR USED, EXCEPT AS EXPRESSLY APPROVED IN WRITING IN ADVANCE BY OWNER. THIS DOCUMENT SHALL BE RETURNED TO OWNER UPON REQUEST. IT MAY BE SUBJECT TO CERTAIN RESTRICTIONS UNDER APPLICABLE EXPORT CONTROL LAWS AND REGULATIONS.</small>			REFERENCE	MATERIAL	PROCESS/FINISH BLACK
			THIRD ANGLE PROJECTION	SIZE C	DRAWING NUMBER 71624403
					SHEET 2 OF 2

4

3

2

1