

**LEAD MATERIAL**  
 18 GA. 125°C 2/64 INS.  
 X-LINKED POLY. (1) BLACK  
 AND (1) BLUE  
 54.00/50.00 [1371.60/1270.00] LONG  
 W/ F.SPADE TERMS. 8903-4011  
 AMP 2-520183-2

**CAPACITOR LEAD MATERIAL**  
 18 GA. 125°C 2/64 INS.  
 X-LINKED POLY. (2) BROWN  
 3.50/2.50 [88.90/63.50] LONG  
 W/ F.FLAG TERMS. 8903-4045

**SENSOR LEAD MATERIAL**  
 22 GA. 80°C 1/64 INS.  
 PVC. (1) WHITE, (1) RED,  
 AND (1) BLACK  
 43.00/41.00 [1092.20/1041.40]. LONG  
 W/ PIN TERMS.  
 MOLEX 08-55-0103

**HALL DEVICE LEADS**  
 Wht \_\_\_\_\_ Output  
 Red \_\_\_\_\_ Input  
 Blk \_\_\_\_\_ Return

NOTES:  
 NO PACKAGING TAPE OVER CARTON LABEL.

6130 5568

**SAFETY WARNING**  
 This motor must be grounded in accordance with local or national electrical codes to prevent possible injury due to electrical shock

**AVERTISSEMENT DE SÉCURITÉ**  
 Ce moteur doit être fondée sur conformément à la réglementation locale ou national électrique codes pour prévenir d'éventuelles blessures en raison de choc électrique

00464072      00469127

**FASCO**      Fasco Industries, Inc  
 Motor Division

Assembled In Mexico

No. 71624163      TYPE U62B1      T.P. AO      LR6319      Connection Diagram

208-230 V      60 Hz      Class B      1/16 HP      Blk \_\_\_\_\_ line

0.6 A      3450 RPM      4 MFD/370 VAC

Model D182      Sealed Ball Brg

61299553

CUSTOMER P/N:	D1182	ENVIRONMENT:	WET								
CUSTOMER:	FASCO DIST.	APPLICATION:	ROOF TOP VENT								
		MOTOR WEIGHT:	4.35 LBS.								
CUSTOMER APPROVAL	FRONT SHAFT POSITION	MOTOR TYPE	REFERENCE SAMPLE NUMBER								
SIGNED:	HORIZONTAL	P.S.C.	71624163								
DATE:		B    LA    FR    A    S    C    E    B    A									
		00   62   30   V   05   DG   5   0   0									
TYPICAL PERFORMANCE AT 208-230 VOLTS 50/60 HZ											
MOTOR SPEED	IDLE			FULL LOAD			LOCKED			BREAK	
	RPM	AMP	WATT	IN_OZ	RPM	AMP	WATT	IN_OZ	AMP	WATT	IN_OZ
208V	3568	.27	54	20.3	3450	.46	94	14.1	1.17	237	41.6
230V	3568	.31	69	23.7	3450	.50	113	17.7	1.25	281	50.9

APPLY IN A CONVENIENT LOCATION TO READ FROM CLIP END

DRAWING REVISION	REVISION BY	DATE	TOLERANCES UNLESS OTHERWISE SPECIFIED:	DRAWN BY	DATE	REGAL™	Regal Beloit America, Inc.
R	G.ZHAO	07-23-2015	DEC. INCH ±0.1 [±2.5] ANGLE ±0.5°	RM	12-18-2001		
ECO-0081097	C.ZHANG	07-23-2015	.XX ±0.01 [±0.25]	APPROVED BY			
SEE ECO			.XXX ±0.005 [±0.127]	DATE			DESCRIPTION
COPYRIGHT REGAL BELOIT AMERICA, INC. ALL RIGHTS RESERVED. PROPRIETARY AND CONFIDENTIAL INFORMATION - THIS DOCUMENT IS THE PROPERTY OF REGAL BELOIT AMERICA, INC. (OWNER) AND CONTAINS OWNER'S PROPRIETARY INFORMATION. ANY PERSON, CORPORATION OR OTHER FIRM RECEIVING IT IS DEEMED, BY RECEIVING IT, TO AGREE THAT IT, AND/OR ANY PART OF IT, SHALL NOT BE DISCLOSED TO ANY PERSON, CORPORATION OR OTHER ENTITY, DUPLICATED, AND/OR USED, EXCEPT AS EXPRESSLY APPROVED IN WRITING IN ADVANCE BY OWNER. THIS DOCUMENT SHALL BE RETURNED TO OWNER UPON REQUEST. IT MAY BE SUBJECT TO CERTAIN RESTRICTIONS UNDER APPLICABLE EXPORT CONTROL LAWS AND REGULATIONS.			.XXXX ±0.0005 [±0.0127]	REFERENCE			MODEL-SFHP-3.3
			REMOVE BURRS & BREAK SHARP EDGES: 0.03/015 [076/381] X 45°	MATERIAL			OUTLINE
			CORNER FILLETS: R.02 [51]	PROCESS/FINISH			BLACK
			MACHINED SURFACES: 125/ INCH 3.2/ mm	THIRD ANGLE PROJECTION			
			mm SHOWN IN [BRACKETS]	SIZE	C	DRAWING NUMBER	71624163
				SHEET			1 OF 2

4

3

2

1

D

D

C

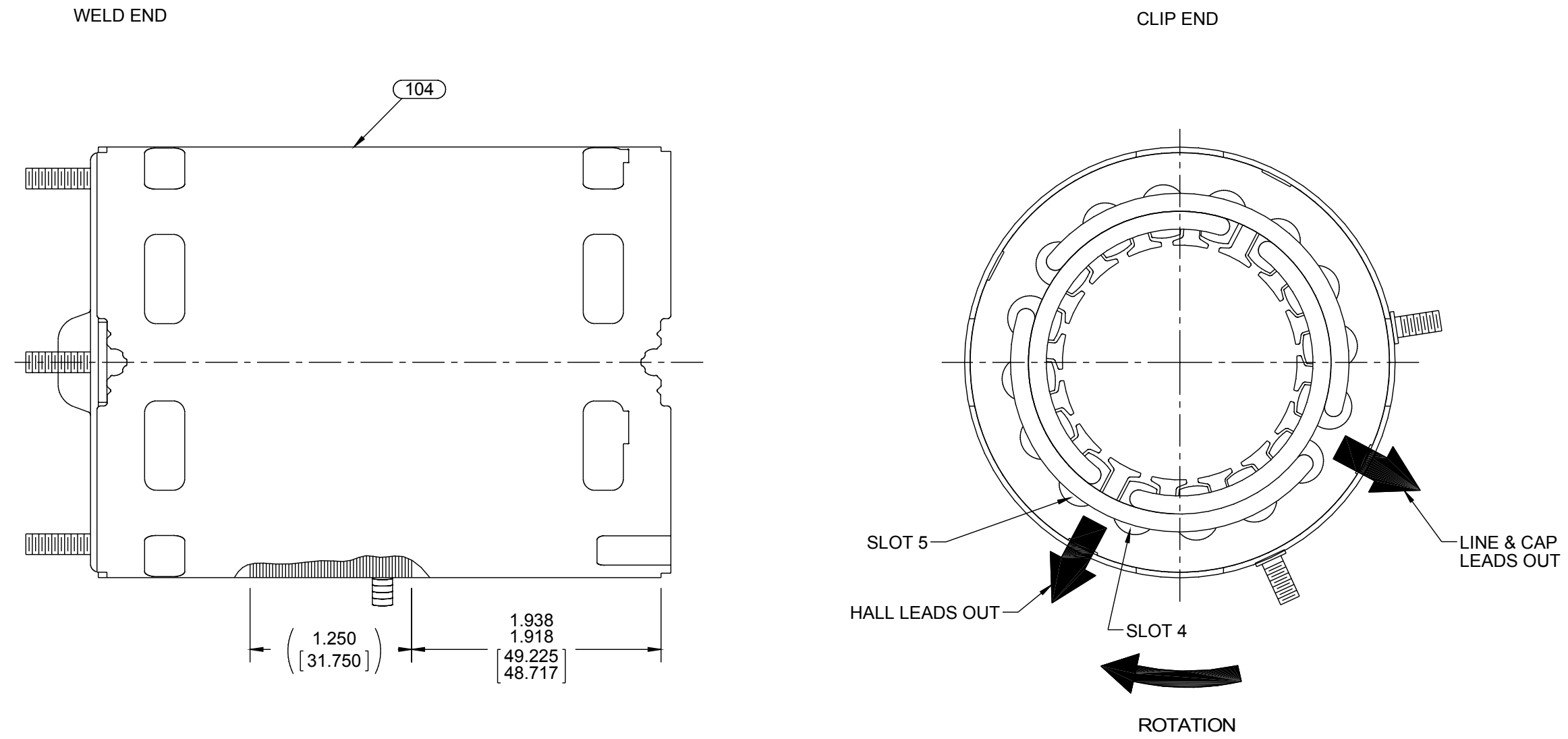
C

B

B

A

A



NOTES:

1. STAKE STATOR TO SLEEVE PER P.S. 8883 0264.
2. MAXIMUM TORQUE REQUIRED TO TURN MOTOR SHAFT IS 3/8 INCH-OUNCE.
3. ASSEMBLE SPRING BETWEEN WASHER AND BEARING ON WELD END, WITH SPRING FINGERS TOWARDS BEARING.
4. ASSEMBLE BALL BEARINGS TO BEARING RETAINERS PER WORK CENTER PROCESS.
5. ADD A LINE OF LOCTITE 410 APPROXIMATELY .050[1.270] WIDE AROUND THE O.D. OF THE BEARING RETAINER A MAXIMUM OF .050[1.270] FROM THE END OPPOSITE THE BEARING RETAINER FLANGE FACE. TACHOMETER RING WILL WIPE ADHESIVE DOWN ON RETAINER AS IT IS INSTALLED. PUSH THE TACHOMETER RING INTO THE NOTCH ON THE BEARING RETAINER. WITH THE BEARING RETAINER UP, LET THE LOCTITE SET UP FOR 6 TO 8 HOURS MINIMUM. AFTER ALLOWING THE LOCTITE TO SET UP, THE TACHOMETER RING MUST WITHSTAND 20 LBS. MINIMUM RADIAL LOAD TEST AFTER ASSEMBLED TO BEARING RETAINER. REJECT ANY THAT DO NOT HOLD.
6. CUT BROWN LEADS TO LENGTH, STRIP TO .22 ± .06[5.59±1.52] AND ASSEMBLE TERMINALS.

PACKING SPECIFICATIONS

1. PACK PER P.S. 8883 4200. 1 PER CARTON, 18 PER LAYER, 108 PER PALLET, 6 LAYERS PER PALLET.
2. PLACE FOAM RING ON CLIP END OF MOTOR, PLACE FILLER TUBE OVER SHAFT EXTENSION. PLACE MOTOR IN CARTON, CLOSE FLAPS AND TAPE. PLACE CARTON LABEL ON SHAFT END OF CARTON.
3. PLACE (1) FLAT PAD ON PALLET, (1) BETWEEN EACH LAYER AND (1) ON TOP. PLACE CARTONS ON PALLET WITH LABELED END OUT AND VISIBLE FOR STORAGE. PLACE ALL INSPECTION STICKERS AND WRITING ON TOP FLAT PAD.
4. CARTON LABELS MUST ALL FACE ONE DIRECTION TOWARD THE OPEN END OF THE PALLET. SEE P.S. 8883 4408.

DRAWING REVISION R	REVISION BY G.ZHAO	DATE 07-23-2015	TOLERANCES UNLESS OTHERWISE SPECIFIED: DEC. INCH mm ANGLE .X ±0.1 [±2.5] ±0.5° .XX ±0.01 [±0.25] .XXX ±0.005 [±0.127] .XXXX ±0.0005 [±0.0127]	DRAWN BY RM	REGAL™ Regal Beloit America, Inc.	
ECO-0081097	APPROVED BY C.ZHANG	DATE 07-23-2015	REMOVE BURRS & BREAK SHARP EDGES: .003/.015 [.076/.381] X 45° CORNER FILLETS: R.02 [.51] MACHINED SURFACES: 125/ mm 3.2/ INCH mm	DATE 12-18-2001	DESCRIPTION MODEL-SFHP-3.3 OUTLINE	
ECO DESCRIPTION SEE ECO				APPROVED BY	MATERIAL	
<small>COPYRIGHT REGAL BELOIT AMERICA, INC. ALL RIGHTS RESERVED. PROPRIETARY AND CONFIDENTIAL INFORMATION - THIS DOCUMENT IS THE PROPERTY OF REGAL BELOIT AMERICA, INC. (OWNER) AND CONTAINS OWNER'S PROPRIETARY INFORMATION. ANY PERSON, CORPORATION OR OTHER FIRM RECEIVING IT IS DEEMED, BY RECEIVING IT, TO AGREE THAT IT, AND/OR ANY PART OF IT, SHALL NOT BE DISCLOSED TO ANY PERSON, CORPORATION OR OTHER ENTITY, DUPLICATED, AND/OR USED, EXCEPT AS EXPRESSLY APPROVED IN WRITING IN ADVANCE BY OWNER. THIS DOCUMENT SHALL BE RETURNED TO OWNER UPON REQUEST. IT MAY BE SUBJECT TO CERTAIN RESTRICTIONS UNDER APPLICABLE EXPORT CONTROL LAWS AND REGULATIONS.</small>				DATE	PROCESS/FINISH BLACK	
				REFERENCE	DRAWING NUMBER 71624163	SHEET 2 OF 2
				THIRD ANGLE PROJECTION	SIZE C	

4

3

2

1