

NOTES

1. THRU AIR SPACING BETWEEN WIRE AND METAL .063 MIN.
2. TIE BOLT TORQUE TOLERANCE 7 - 10 IN. LBS.
3. ROTOR FREENESS TO BE WITHIN 1 OZ. IN.
4. FOR WASHER SET-UP, SEE CHART C600 0279, DETAIL "H".
5. MAXIMUM 0.1 Ω RESISTANCE BETWEEN GROUND TERMINAL AND MOTOR FRAME.
6. SALES TO SPECIFY ON P.O. WHICH PACK TO USE.

ECO	REV.	DATE	SPEC/CHECK
639598	22	5-4-09	MKR/MKR
625626	19	5-1-00	DJK/RWS
631904	20	10-10-03	LDC/LDC
638399	21	7-15-08	MKR/MKR

71xx xxxx,M

A. SEE PACKAGING MANUAL PAGE 2 FOR PACKAGING PROCEDURES.

1 MOTOR/CARTON;
20 MOTORS/LAYER;
6 LAYERS/PALLET;
120 MOTORS/PALLET.

B. SEE DRAWING 8785 6079 SH. 1 FOR PALLET LAYOUT.

C. CENTER LABEL, 6119 4001, ON END OF CARTON.

D. PLACE PAMPHLET, 6122 4579, IN CARTON WITH MOTOR.

71xx xxxxC

If Printed, this is an Uncontrolled Document

PRODUCTION TEST AT IDLE 115 VOLTS 60 HZ		MOTOR SPEED	PERFORMANCE TEST 115 VOLTS 60 HZ 1 PH 1/15 HP										
AMP	WATT		IDLE			LOADED				LOCKED			BREAK
			RPM	AMP	WATT	OZ/IN	RPM	AMP	WATT	OZ/IN	AMP	WATT	OZ/IN
2.31 — 1.89	128.7 — 105.3	ULTRA HI	1753	2.1	117	46	1550	2.4	175	20	3.4	238	52
1.32 — 1.08	77.0 — 63.0	HIGH	1735	1.2	70	26	1550	1.4	100	12	1.9	132	30
1.10 — .90	62.7 — 51.3	MED.	1720	1.0	57	19	1550	1.1	79	10	1.5	104	24
.88 — .72	52.8 — 43.2	LOW	1713	.8	48	15	1550	.9	65	8	1.3	85	19

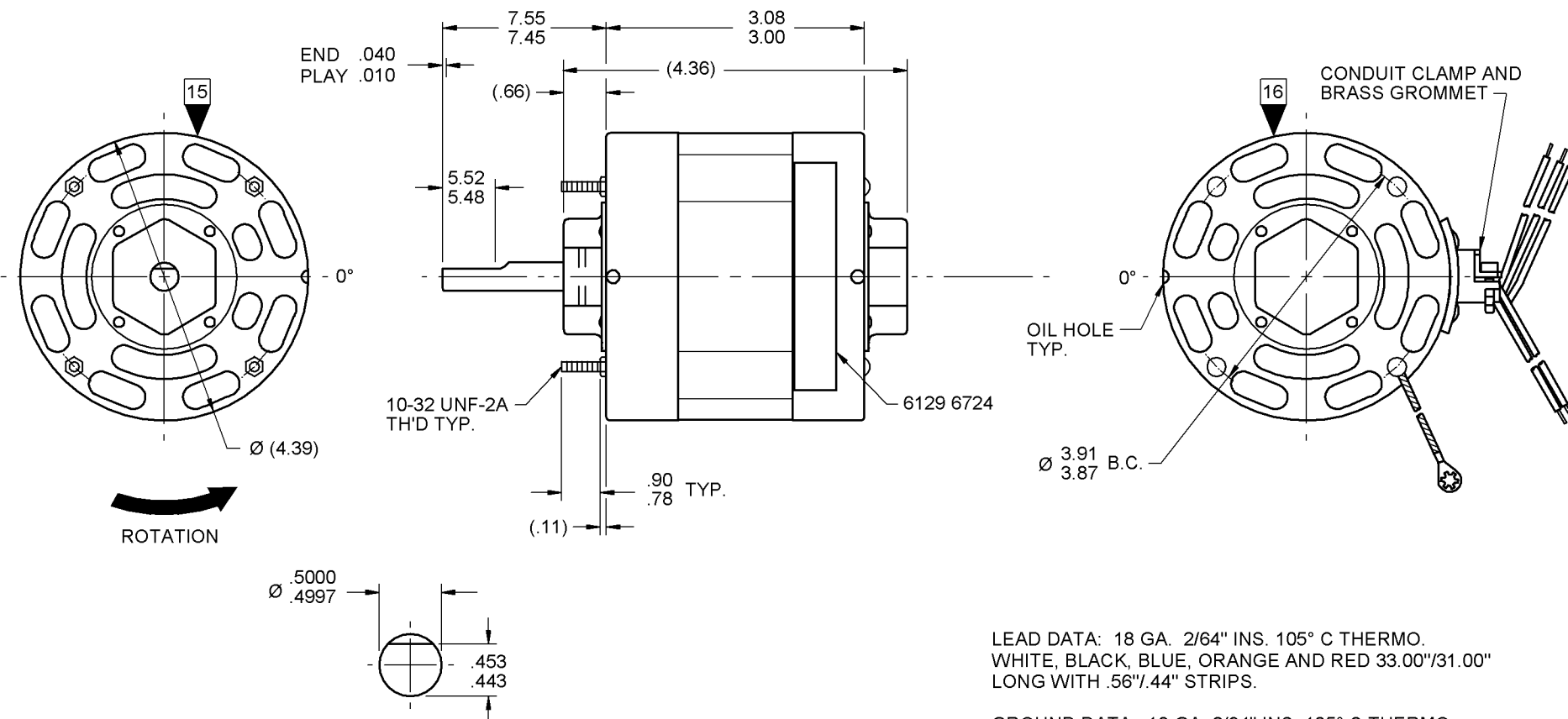
HI-POT TEST 2000 VOLTS
MAX LEAKAGE CURRENT 5 mA

MOTORS MUST START WITH 90 VOLTS APPLIED TO LOWEST SPEED.

7108 5132 MA

OPPOSITE LEAD END

LEAD END



LEAD DATA: 18 GA. 2/64" INS. 105° C THERMO. WHITE, BLACK, BLUE, ORANGE AND RED 33.00"/31.00" LONG WITH .56"/.44" STRIPS.

GROUND DATA: 18 GA. 2/64" INS. 105° C THERMO. GRN/YEL 7.00"/6.00" LONG WITH A # 10 SERRATED RING TERMINAL.

SPECIAL INSTRUCTIONS: SHAFT IS BONDERIZED. PAMPHLET PACKED WITH MOTOR.

7108 5132 = MADE IN U.S.A.
7108 5132M = ASSEMBLED IN MEXICO

FASCO FASCO INDUSTRIES, INC. MOTOR DIVISION

THERMALLY PROTECTED **SAFETY WARNING**

V. 115 HZ 60 AD PH 1 ROT
HP 1/15-1/25-1/30-1/40 AMP 2.5-1.5-1.2-1.0
RPM 1550 (4 SPD) TYPE U8 NO. 7108-5132

DATE/BAR CODE AREA PER 8882 6003

MODEL D117

CONNECTION DIAGRAM

WHITE — BLACK-ULTRA HI — BLUE-HI — ORANGE-MED — RED-LO —

THIS MOTOR MUST BE GROUNDED IN ACCORDANCE WITH LOCAL OR NATIONAL ELECTRICAL CODES TO PREVENT POSSIBLE INJURY DUE TO ELECTRICAL SHOCK

6129 6724,M REV. 10

LOCATE NAMEPLATE .10 FROM FACE OF LEAD END COVER TO READ RIGHT FROM LEAD END OF MOTOR CENTER AT 0°.
SIZE 4.00 X .75

MOTORS PACKED MAX. PER SKID: ___ PALLET PACK, 120 CARTON PACK.

CUSTOMER: FASCO DISTRIBUTING CO.	PROPRIETARY: DO NOT DUPLICATE OR DISCLOSE TO THIRD PARTIES WITHOUT WRITTEN PERMISSION OF FASCO IND. INC., ELDON MO.
PART NUMBER: D117	FASCO INDUSTRIES, INC. MOTOR DIVISION ELDON PLANT
APPLICATION: BLOWER	MOTOR TYPE SHADED POLE
FINISH COLOR: GRAY	MOTOR NUMBER 7108 5132
MOTOR WEIGHT: LBS.	M
ENVIRONMENT: DRY	REV. 22
INSULATION CLASS: A	

8669 6581 1