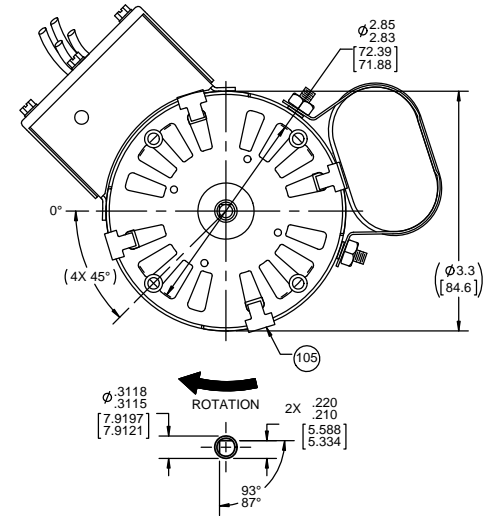
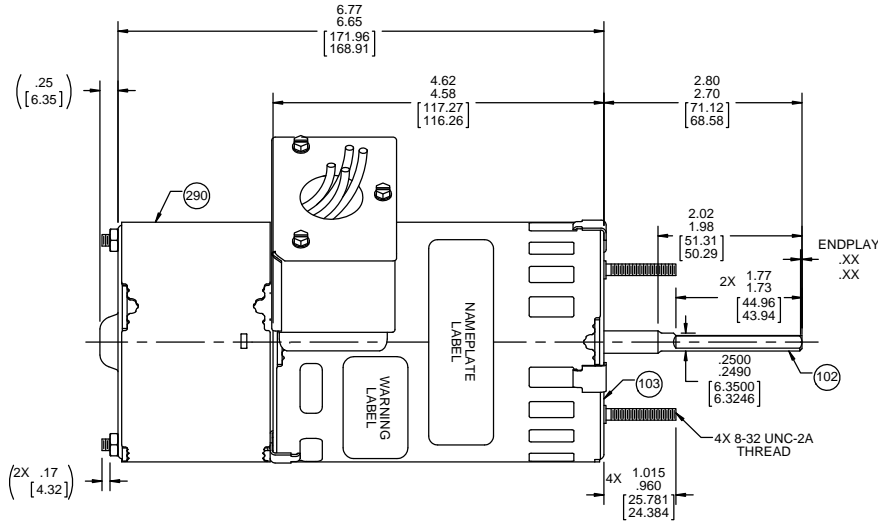
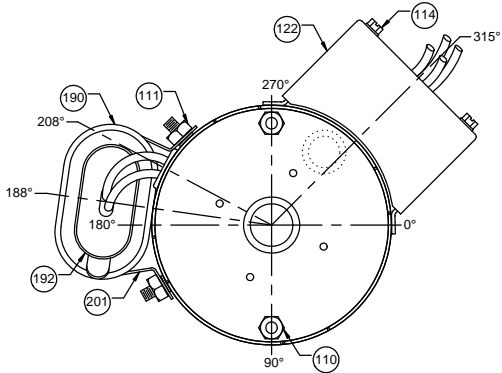


BACK END

FRONT END



LEAD MATERIAL
 18 GA. 125°C 2/64 INUSL
 X-LINKED POLY. (1) BLACK
 AND (1) YELLOW
 13.00/11.00 [330.20/279.40]
 .56/.44 [14.22/11.18] STRIP
 (2) BROWN CAPACITOR LEADS
 6.00/4.00 [152.40/101.60]
 W/ FFLAG TERMS. 89034045
 AMP 42742-2
 (2) RED SWITCH LEADS
 17.00/15.00 [431.80/381.00]
 .56/.44 [14.22/11.18] STRIP

- NOTES:
 1. SWITCH RATING: 250 VAC, 5 AMP, CHECK SWITCH PERFORMANCE 100%.
 2. MOTOR USES 416 SS SHAFT.
 3. NO PACKAGING TAPE OVER CARTON LABEL.

SAFETY WARNING
 This motor must be grounded in accordance with local or national electrical codes to prevent possible injury due to electrical shock

AVERTISSEMENT DE SECURITE
 Ce moteur doit être fondée sur conformément à la réglementation locale ou national électrique codes pour prévenir d'éventuelles blessures en raison de choc électrique

FASCO Fasco Industries, Inc. Motor Division

Assembled in Mexico

No. 71624015 TYPE U62B1 T.P. AO LR6319

208-230 V 60/50 Hz Class B 1/15 HP

0.5 A 3450/2875 RPM Sealed Ball Brg

Model D1178

SW280-1 125VA-120V

4 MFD/370 VAC

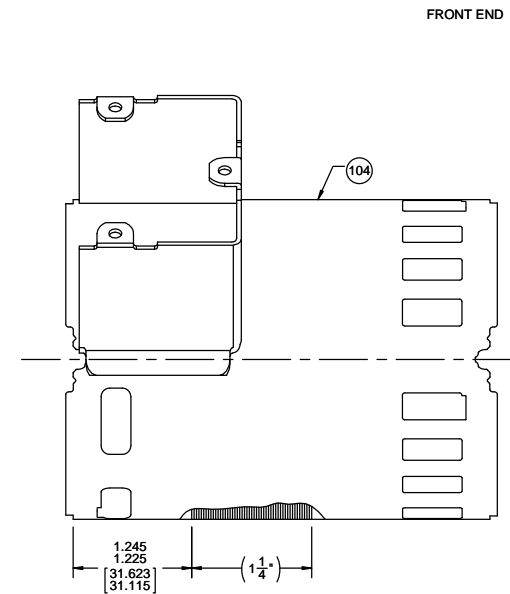
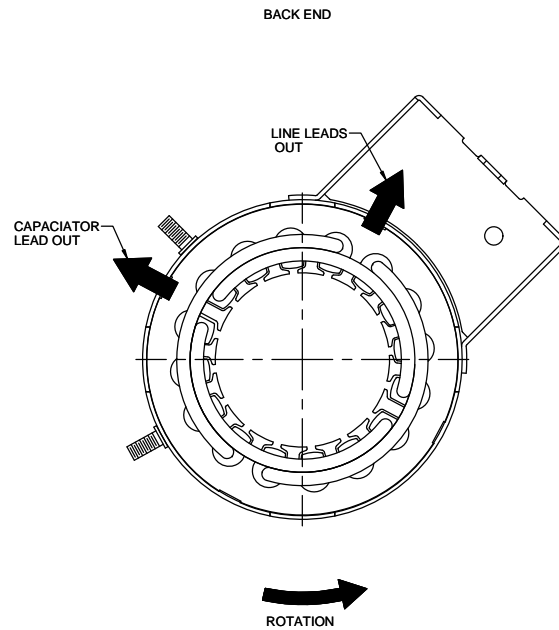
Connection Diagram:
 Blk — Line
 Yel — Line
 Brn —
 Brn —
 Red —
 Red —

| | | | |
|--|-------------|------------------|---------------|
| CUSTOMER: | FASCO DIST. | APPLICATION: | ROOF TOP UNIT |
| CUSTOMER PN: | D1178 | MOTOR WEIGHT: | 4.62 LBS |
| | | ENVIRONMENT: | WET |
| MOTOR TYPE | | REFERENCE SAMPLE | |
| P.S.C. | | | |
| B | LA | FR | A |
| 00 | 62 | 34 | F |
| | | 05 | C |
| | | | E |
| | | | B |
| | | | A |
| TYPICAL PERFORMANCE AT 230 VOLTS 60 HZ | | | |
| CAP: 4 MFD/370 VAC | | | |
| IDLE | | LOADED | |
| MOTOR SPEED | RPM | AMP | WATT |
| | 3567 | .26 | 58 |
| | | 19.1 | 3450 |
| | | .41 | 92 |
| | | | 19.9 |
| | | | 1.08 |
| | | | 248 |
| | | | 48.5 |

| | | | | | |
|------------------|---------------------|-----------|--|------------------------|----------------|
| DRAWING REVISION | REVISION BY | DATE | TOLERANCES UNLESS OTHERWISE SPECIFIED: | DRAWN BY | S.M.MAGGARD |
| U | SDM | 12/1/2016 | DEC. INCH mm ANGLE | | |
| ECO-0113447 | APPROVED BY | DATE | .XX ±0.1 [±2.5] ±1° | DATE | 11-01-2001 |
| ECO DESCRIPTION | PLA | 12/1/2016 | .XXX ±0.01 [±0.25] | APPROVED BY | |
| | CHANGE PACKING NOTE | | .XXX ±0.005 [±0.127] | DATE | |
| | | | .XXXX ±0.0005 [±0.0127] | DESCRIPTION | MOTOR ASSY |
| | | | REMOVE BURRS & BREAK SHARP EDGES: .003/.015 [0.076/.381] X 45° CORNER FILLETS: R.02 [S1] | REFERENCE | |
| | | | MACHINED SURFACES: 125/32 INCH/mm | MATERIAL | |
| | | | mm SHOWN IN [BRACKETS] | PROCESS/FINISH | BLACK PAINT |
| | | | | SIZE | DRAWING NUMBER |
| | | | | C | 71624015 |
| | | | | THIRD ANGLE PROJECTION | SHEET |
| | | | | | 1 OF 2 |

NOTES:

1. STAKE STATOR TO MAIN FRAME PER 88830264.
2. MAXIMUM TORQUE REQUIRED TO TURN MOTOR SHAFT IS 3/8 INCH-OUNCE.
3. ASSEMBLE SPRING BETWEEN WASHER AND BEARING ON BACK END, WITH SPRING FINGERS TOWARD BEARING.
4. STRING LINE AND SWITCH LEADS THROUGH CONDUIT BOX COVER PRIOR TO ATTACHING COVER TO BOX WITH (3) SCREWS.
5. ASSEMBLE BALL BEARINGS TO BEARING RETAINERS PER 88834419.



SWITCH INSTRUCTIONS

1. PRESS ACTUATOR ASSEMBLY AND THIMBLE ON SHAFT SO THAT TOP OF PLATE ON ACTUATOR IS LOCATED .568/ .548 [14.427/13.919] FROM END OF SHAFT.
2. SWITCH MUST BE ADJUSTED TO OBTAIN .035/ .025 [.889/.635] AIR GAP BETWEEN THIMBLE AND SWITCH IN FULL OPERATING POSITION.
3. SWITCH MUST MAKE CONTACT BETWEEN 1800-2500 RPM AS SPEED INCREASES AND BREAK 50-500 RPM BELOW ACTUAL MAKE.
4. ASSEMBLE SWITCH AND ACTUATOR PER 88834261
5. SWITCH MECHANISM TO GIVE QUIET OPERATION ABOVE 2500 RPM.
6. TIE SWITCH LEADS TO WELDBOLTS (2) PLACES WITH CABLE TIES PRIOR TO STRINGING LEADS THROUGH LEAD EXIT IN CLIP PLATE. SWITCH LEADS TO EXIT WITH LINE LEADS THROUGH CONDUIT BOX.

PACKING SPECIFICATIONS

1. PACK 1 PER CARTON, 18 PER LAYER, 6 LAYERS PER PALLET, 108 MAX. PER PALLET, PER 88834200.
2. PLACE MOTOR IN PLASTIC BAG, PLACE FOAM RING OPPOSITE SHAFT END, PLACE A 3 1/4" FILLER TUBE OVER SHAFT EXTENSION AND PLACE IN CARTON. CLOSE FLAPS AND TAPE. PLACE CARTON LABEL ON SHAFT END OF CARTON. LAY CARTONS ON SIDE ON PALLET.
3. PLACE ONE FLAT PAD ON PALLET AND ONE BETWEEN EACH LAYER.
4. CARTON LABELS MUST ALL FACE ONE DIRECTION TOWARD THE OPEN END OF THE PALLET. SEE 88834408.
5. NO PACKING TAPE OVER CARTON LABEL.

| | | | | | | |
|--|--------------------|-------------------|---|-------------------------|-----------------------------------|-------------------------------|
| DRAWING REVISION U | REVISION BY SDM | DATE 12/1/2016 | TOLERANCES UNLESS OTHERWISE SPECIFIED: DEC. INCH mm ANGLE | DRAWN BY S.M.MAGGARD | Regal Beloit America, Inc. | |
| ECO-0113447 | APPROVED BY PLA | DATE 12/1/2016 | .X ±0.1 [.25] ±1° .XX ±0.01 [.025] .XXX ±0.005 [.0127] .XXXX ±0.0005 [.0127] | DATE 11-01-2001 | | |
| CHANGE PACKING NOTE | | | REMOVE BURRS & BREAK SHARP EDGES: .003/.015 [.076/.381] X 45° CORNER FILLETS: R.02 [.51] | APPROVED BY | DESCRIPTION MOTOR ASSY | |
| <small>COPYRIGHT REGAL BELOIT AMERICA, INC. ALL RIGHTS RESERVED. PROPRIETARY AND CONFIDENTIAL INFORMATION - THIS DOCUMENT IS THE PROPERTY OF REGAL BELOIT AMERICA, INC. FORMERLY AND CONTAINS OWNER'S PROPRIETARY INFORMATION. ANY PERSON, CORPORATION OR OTHER FIRM RECEIVING IT IS DEEMED, BY RECEIVING IT, TO AGREE THAT IT, AND/OR ANY PART OF IT, SHALL NOT BE DISCLOSED TO ANY PERSON, CORPORATION OR OTHER ENTITY, DUPLICATED, AND/OR USED, EXCEPT AS EXPRESSLY APPROVED IN WRITING IN ADVANCE BY OWNER. THIS DOCUMENT SHALL BE RETURNED TO OWNER UPON REQUEST. IT MAY BE SUBJECT TO CERTAIN RESTRICTIONS UNDER APPLICABLE EXPORT CONTROL LAWS AND REGULATIONS.</small> | | | MACHINED SURFACES: 1/25 / 3.2 INCH / mm V mm SHOWN IN [BRACKETS] | DATE | MATERIAL | PROCESS/FINISH BLACK PAINT |
| | | | THIRD ANGLE PROJECTION | SIZE C | DRAWING NUMBER 71624015 | SHEET 2 OF 2 |