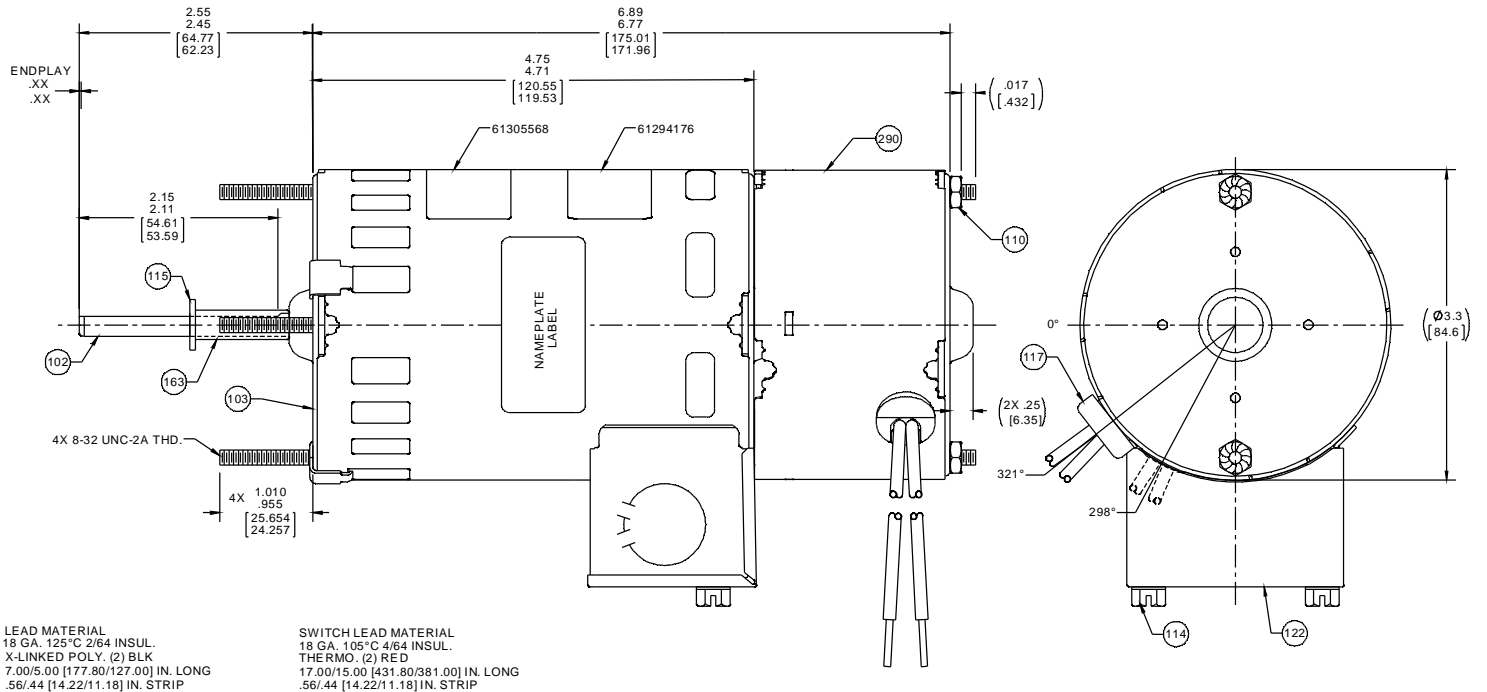


ROTATION

SHAFT DETAIL



- NOTES:
- HIPOT MOTORS AT 2350 VOLTS FOR 1 SECOND.
 - NO PACKAGING TAPE OVER CARTON LABEL.

61294176

WARNING

WHEN OPERATED ON 460 V. SPECIAL CARE SHOULD BE TAKEN WITH HANDLING. CONNECTIONS AND GROUNDING TO AVOID SHOCK HAZARD.

61305568

SAFETY WARNING
This motor must be grounded in accordance with local or national electrical codes to prevent possible injury due to electrical shock

AVERTISSEMENT DE SÉCURITÉ
Ce moteur doit être fondée sur conformément à la réglementation locale ou nationale électrique codes pour prévenir d'éventuelles blessures en raison de choc électrique

00464072

00469108

FASCO Fasco Industries, Inc
Motor Division

Assembled in Mexico
No. 71217718 TYPE U21B T.P. AO
460 V 60 Hz Class B 1/12 HP
0.6 A 3000 RPM Max. Amb: 40°C
Model D1171 SW280-10

Connection Diagram
Blk — Line
Blk — Line
Red —
Red —

Sealed Ball Brg
61299553

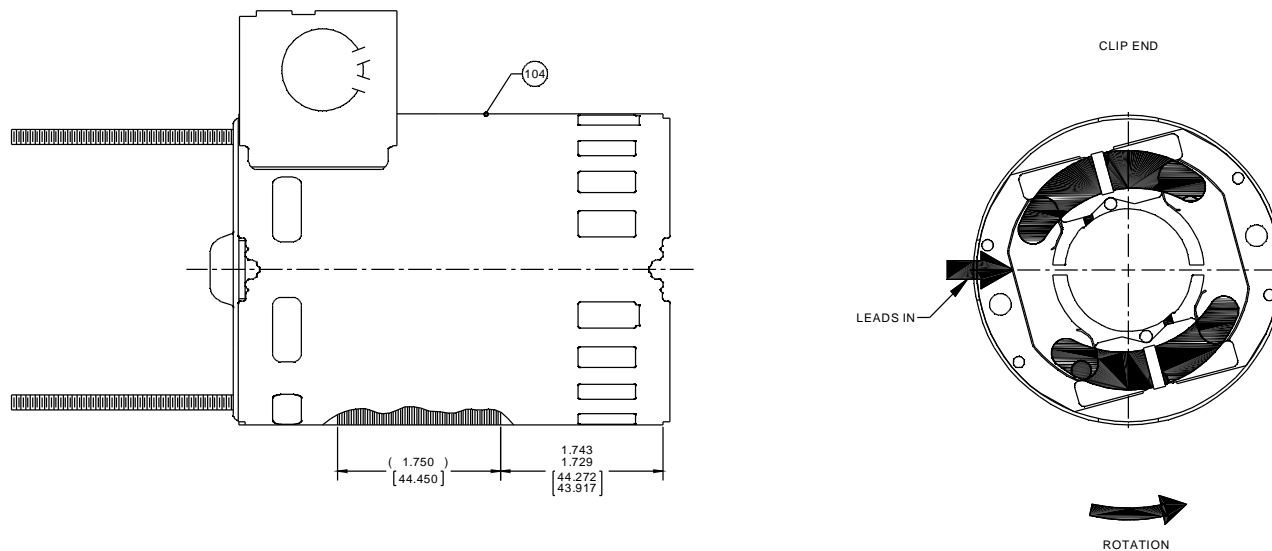
| | | | | | | | | | | | |
|--|-------------|-------------------------|--------------|--------|------|-----|--------|-------|------|-------|------|
| CUSTOMER: | FASCO DIST. | APPLICATION: | FLUE EXHAUST | | | | | | | | |
| CUSTOMER PN: | D1171 | MOTOR WEIGHT: | 5 LBS. | | | | | | | | |
| | UP | ENVIRONMENT: | DRY | | | | | | | | |
| | HORIZONTAL | MOTOR TYPE SHADDED POLE | | | | | | | | | |
| | DOWN | REFERENCE SAMPLE | | | | | | | | | |
| | | B | LA | | | | | | | | |
| | | FR | A | | | | | | | | |
| | | F | S | | | | | | | | |
| | | 07 | DG | | | | | | | | |
| | | 5 | 0 | | | | | | | | |
| | | 0 | 0 | | | | | | | | |
| TYPICAL PERFORMANCE AT 460 VOLTS 60 HZ | | | | | | | | | | | |
| | IDLE | | | LOADED | | | LOCKED | | | BREAK | |
| MOTOR SPEED | RPM | AMP | WATT | IN OZ | RPM | AMP | WATT | IN OZ | WATT | IN OZ | |
| | 3519 | .43 | 89 | 25.1 | 3000 | .58 | 163 | 19.5 | .79 | 203 | 25.8 |

| | | | | | | |
|--|-------------|-----|-----------|--|----------|-----------|
| DRAWING REVISION | REVISION BY | PLA | DATE | TOLERANCES UNLESS OTHERWISE SPECIFIED: | DRAWN BY | PLA |
| ECO-0070995 | APPROVED BY | JMG | 2/18/2015 | DEC. INCH. .010 ANGLE 20.5° | DATE | 2/18/2015 |
| ECO DESCRIPTION: REDRAWN ON SW, CHANGED WARNING LABELS | | | | REGAL BELLOIT AMERICA, INC. | | |
| MOTOR ASSY | | | | MOTOR ASSY | | |
| MATERIAL | | | | PROCESS/FINISH | | |
| DRAWING NUMBER | | | | SHEET | | |
| 71217718 | | | | 1 OF 2 | | |

ORACLE PART REV. 018

NOTES:

1. ALL SPACINGS THRU AIR BETWEEN WIRE AND METAL MUST BE AT LEAST: .094 [2.388]
2. NO KNOCKOUTS REMOVED.
3. ASSEMBLE LOADING SPRING BETWEEN WASHER AND BEARING ON CLIP END WITH SPRING FINGERS TOWARD BEARING.
4. COIL LEADS INSIDE CONDUIT BOX AFTER TESTING AND SECURE COVER WITH PC 114 SCREW.
5. ASSEMBLE BALL BEARINGS TO BEARING RETAINERS PER WORK CENTER PROCESS.
6. BUSHING PC 163 TO BE ASSEMBLED ON SHAFT, THEN OIL SLINGER PC 115 ASSEMBLED ON SHAFT TO SECURE BUSHING FOR SHIPPING.



SWITCH SPECIFICATIONS

1. PRESS ACTUATOR ASSEMBLY AND THIMBLE SO THAT TOP OF METAL ACTUATOR PLATE IS .568/.548 [14.427/13.919] FROM END OF SHAFT.
2. SWITCH MUST BE ADJUSTED TO OBTAIN .035/.025 [.889/.635] AIR GAP BETWEEN THIMBLE AND SWITCH IN FULL OPERATING POSITION.
3. ASSEMBLE SWITCH ASSEMBLY AND ACTUATOR PER PROCESS STANDARD.
4. WHEN ASSEMBLING HEYCO, NO SLACK ALLOWED INSIDE SWITCH COVER.
5. SWITCH MUST MAKE CONTACT BETWEEN 1800-2500 RPM AS SPEED INCREASES AND BREAK 50-500 RPM BELOW ACTUAL MAKE.
6. SWITCH MECHANISM TO GIVE QUIET OPERATION ABOVE 2500 RPM.

PACKING SPECIFICATIONS

1. PACK 1 PER CONTAINER, 140 MAX. PER PALLET, PACKING ASSY. 87854917, 20 CONTAINERS PER LAYER, 7 LAYERS PER PALLET, P.S. 88834200 AND P.S. 88834408.
2. CARTON LABELS MUST ALL FACE ONE DIRECTION TOWARD THE OPEN END OF THE PALLET SEE P.S. 88834408.

| | | | | | | |
|--|--------------------|-------------------|---|--------------------|-----------------------------------|-------------------------|
| DRAWING REVISION W | REVISION BY PLA | DATE 2/18/2015 | TOLERANCES UNLESS OTHERWISE SPECIFIED: DEC. INCH. MM. ANGLE | DRAWN BY PLA | Regal Beloit America, Inc. | |
| ECCO-0070995 | APPROVED BY JMG | DATE 2/18/2015 | .X ±0.1 [±2.5] -XX ±0.01 [±0.25] XXX ±0.005 [±0.127] .XXXX ±0.0005 [±0.0127] | DATE 2/18/2015 | | |
| ECCO DESCRIPTION REDRAWN ON SW, CHANGED WARNING LABELS | | | REMOVE BURRS & BREAK SHARP EDGES: .0031 [0.0762] [0.301] CORNER FILLETS: .02 [51] MACHINED SURFACES: .125 / 3.2 INCH / mm | APPROVED BY JMG | DESCRIPTION MOTOR ASSY | |
| COPYRIGHT REGAL BELOIT AMERICA, INC. ALL RIGHTS RESERVED. PROPRIETARY AND CONFIDENTIAL INFORMATION: THIS DOCUMENT IS THE PROPERTY OF REGAL BELOIT AMERICA, INC. (OWNER) AND CONTAINS OWNER'S PROPRIETARY INFORMATION. ANY PERSON, CORPORATION OR OTHER ENTITY RECEIVING IT IS DEEMED BY RECEIVING IT TO AGREE THAT IT AND/OR ANY PART OF IT SHALL NOT BE DISCLOSED TO ANY PERSON, CORPORATION OR OTHER ENTITY WITHOUT THE WRITTEN AND EXPRESS APPROVAL OF REGAL BELOIT AMERICA, INC. THIS DOCUMENT SHALL BE RETURNED TO OWNER UPON REQUEST. IT MAY BE SUBJECT TO CERTAIN RESTRICTIONS UNDER APPLICABLE EXPORT CONTROL LAWS AND REGULATIONS. | | | REVISIONS | DATE | MATERIAL | PROCESS/FINISH BLACK |
| | | | THIRD ANGLE PROJECTION | SIZE C | DRAWING NUMBER 71217718 | SHEET 2 OF 2 |