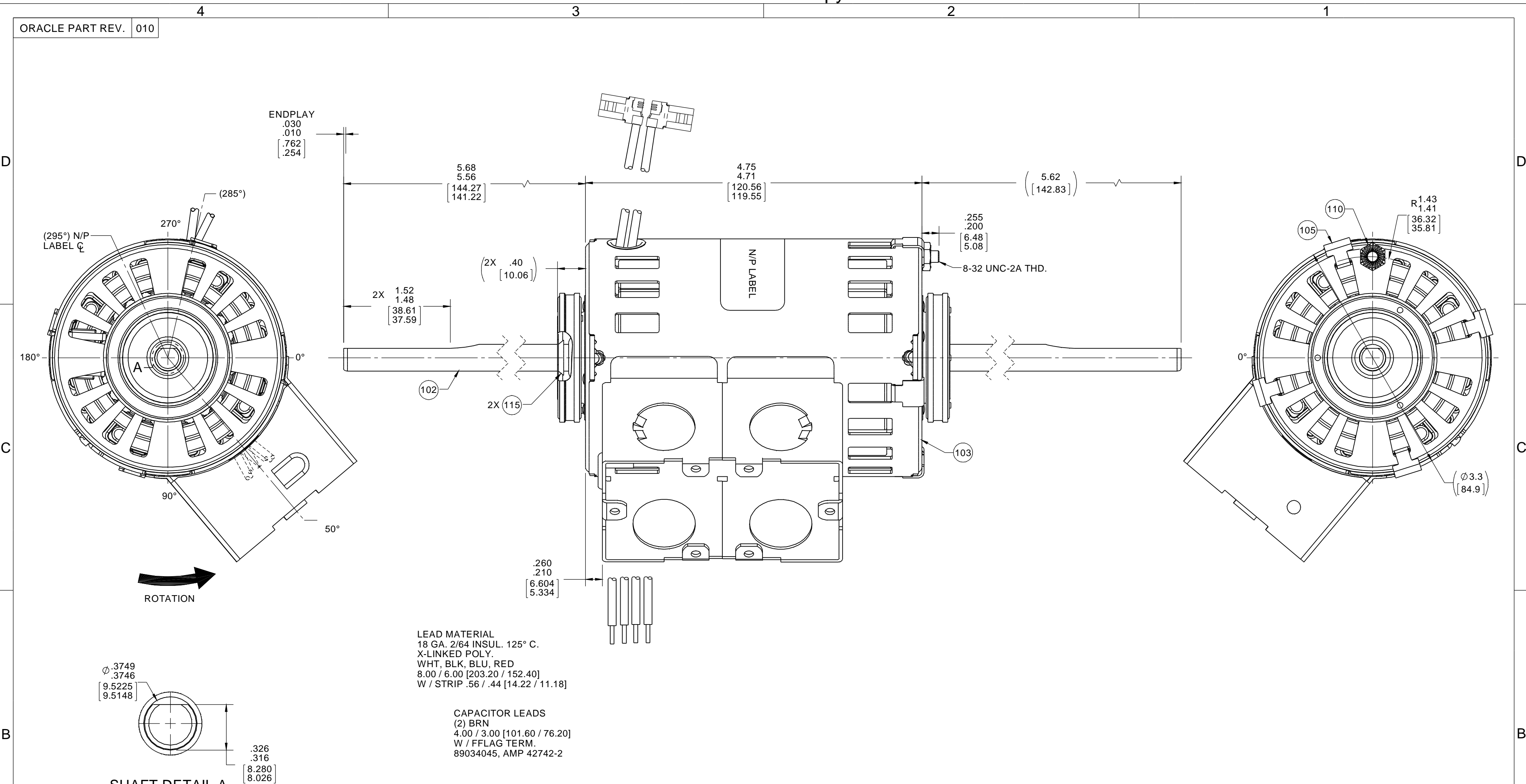


ORACLE PART REV. 010



- NOTES:
- COIL LEADS INSIDE BOX AFTER TESTING.
 - ASSEMBLE WASHER AND NUT TO 10-32 UNF-2A STUD IN CONDUIT BOX.
 - CONDUIT BOXES (2) ARE 5.0 CUBIC INCH REF. SIZE AND HAVE NO KNOCKOUTS REMOVED.
 - THREADS OF 8-32 STUD ON MOTOR END PLATE MUST BE FREE OF PAINT.
 - MOTOR HAS 416 SS SHAFT.
 - NO PACKAGING TAPE OVER CARTON LABEL.

61305568

SAFETY WARNING
This motor must be grounded in accordance with local or national electrical codes to prevent possible injury due to electrical shock

AVERTISSEMENT DE SECURITE
Ce moteur doit être fondée sur conformément à la réglementation locale ou national électrique codes pour prévenir d'éventuelles blessures en raison de choc électrique

LOCATE IN A CONVENIENT LOCATION TO READ FROM WELD END

00464072 00469105

FASCO Fasco Industries, Inc. Motor Division

Assembled in Mexico

No. 71902354 TYPE U90B1 T.P. AO LR6319
115 V 60 Hz Class B
1500 RPM
Model D1140 Max. Amb. 40° C
1/15-1/12-1/10 HP Rot CCWLE
2.2/2.1/1.7 A

Connection Diagram
Wht — Common
Blk — High
Blu — Med
Red — Low
Brn —
Brn —

7.5 MFD/370 VAC

61299553

CUSTOMER:	FASCO DIST.	APPLICATION:									
CUSTOMER PN:	D1140	MOTOR WEIGHT:	5.70 LBS.								
	UP	ENVIRONMENT:	DRY								
HORIZONTAL	MOTOR TYPE			REFERENCE SAMPLE			SAMPLE REV				
	P. S. C.										
	B	LA	FR	A	S	C	E	B	A		
	00	90	31	V	08	DF	7	6	0		
TYPICAL PERFORMANCE AT 115 VOLTS 60 HZ					CAP. 7.5 MFD 370 VAC						
	IDLE			LOADED			LOCKED			BREAK	
MOTOR SPEED	RPM	AMP	WATT	IN OZ	RPM	AMP	WATT	IN OZ	AMP	WATT	IN OZ
HIGH	1780	.96	99	89.8	1500	1.96	216	44.9	3.05	318	104.1
MED	1774	.68	75	55.0	1100	2.06	205	29.1	2.16	226	67.7
LOW	1770	.55	60	30.6	800	1.59	167	20.8	1.67	173	48.8

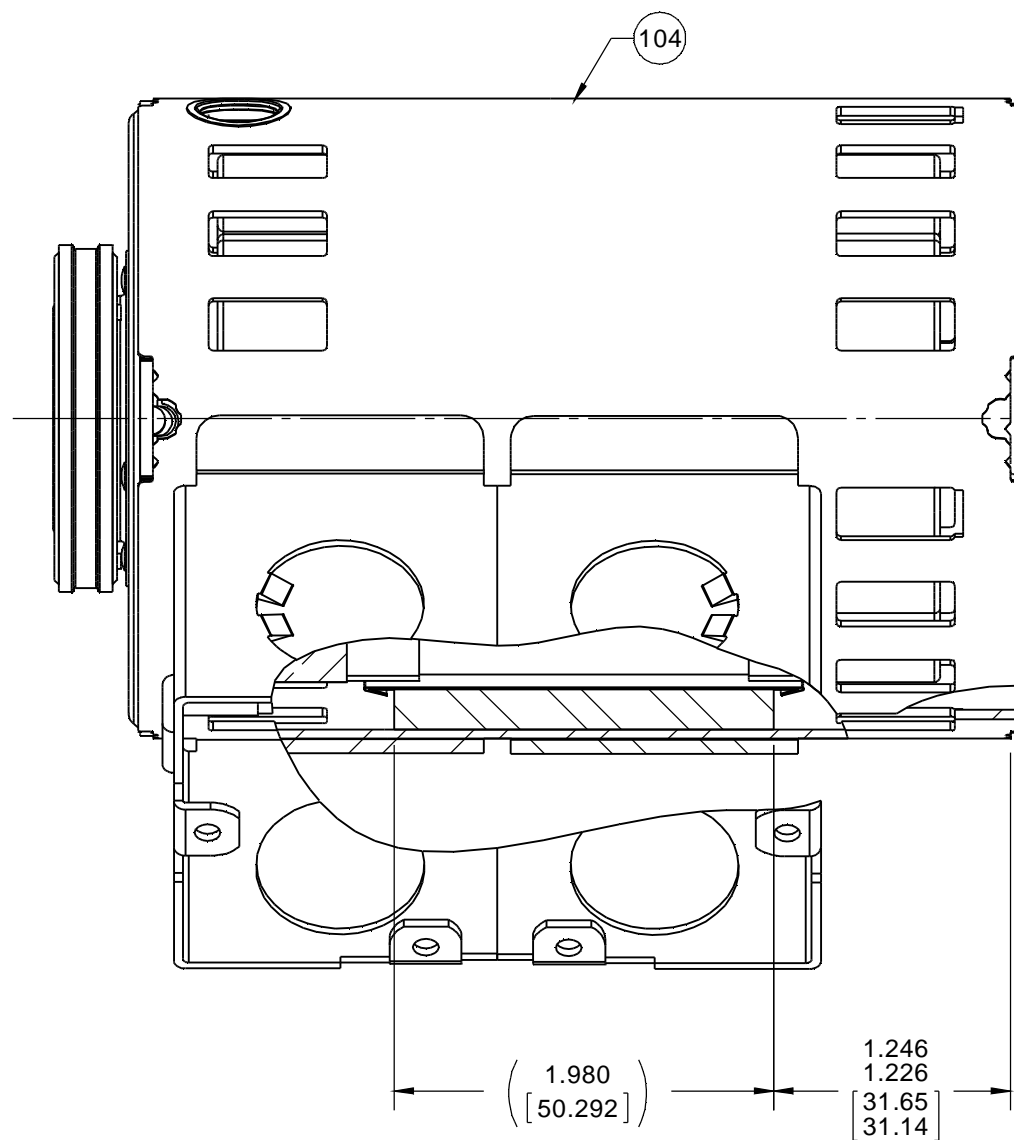
DRAWING REVISION	REVISION BY	DATE	TOLERANCES UNLESS OTHERWISE SPECIFIED:	DRAWN BY	DATE	REGAL Regal Beloit America, Inc.
L	SED	4/30/2015	DEC. INCH mm ANGLE	SED	4/30/2015	
ECO-0068177	APPROVED BY	DATE	.X ±0.1 [±2.5]	MLM	4/30/2015	DESCRIPTION MOTOR ASSY
	MLM	4/30/2015	.XX ±0.01 [±0.25]			
CORRECTED CONDUIT BOX DIMENSION			.XXX ±0.005 [±0.127]	DATE		MATERIAL
COPYRIGHT REGAL BELOIT AMERICA, INC. ALL RIGHTS RESERVED. PROPRIETARY AND CONFIDENTIAL INFORMATION - THIS DOCUMENT IS THE PROPERTY OF REGAL BELOIT AMERICA, INC. (OWNER) AND CONTAINS OWNER'S PROPRIETARY INFORMATION. ANY PERSON, CORPORATION OR OTHER FIRM RECEIVING IT IS DEEMED BY RECEIVING IT, TO AGREE THAT IT, AND/OR ANY PART OF IT, SHALL NOT BE DISCLOSED TO ANY PERSON, CORPORATION OR OTHER ENTITY, DUPLICATED, AND/OR USED, EXCEPT AS EXPRESSLY APPROVED IN WRITING IN ADVANCE BY OWNER. THIS DOCUMENT SHALL BE RETURNED TO OWNER UPON REQUEST. IT MAY BE SUBJECT TO CERTAIN RESTRICTIONS UNDER APPLICABLE EXPORT CONTROL LAWS AND REGULATIONS.			4/30/2015		PROCESS/FINISH BLACK PAINT	
REMOVE BURRS & BREAK SHARP EDGES: .003/.015 [076/381] CORNER FILLETS: .02 [51] MACHINED SURFACES: 125/ mm 3.2/ INCH			THIRD ANGLE PROJECTION			SIZE
mm SHOWN IN [BRACKETS]			C		71902354	SHEET
					1 OF 2	

ORACLE PART REV. 010

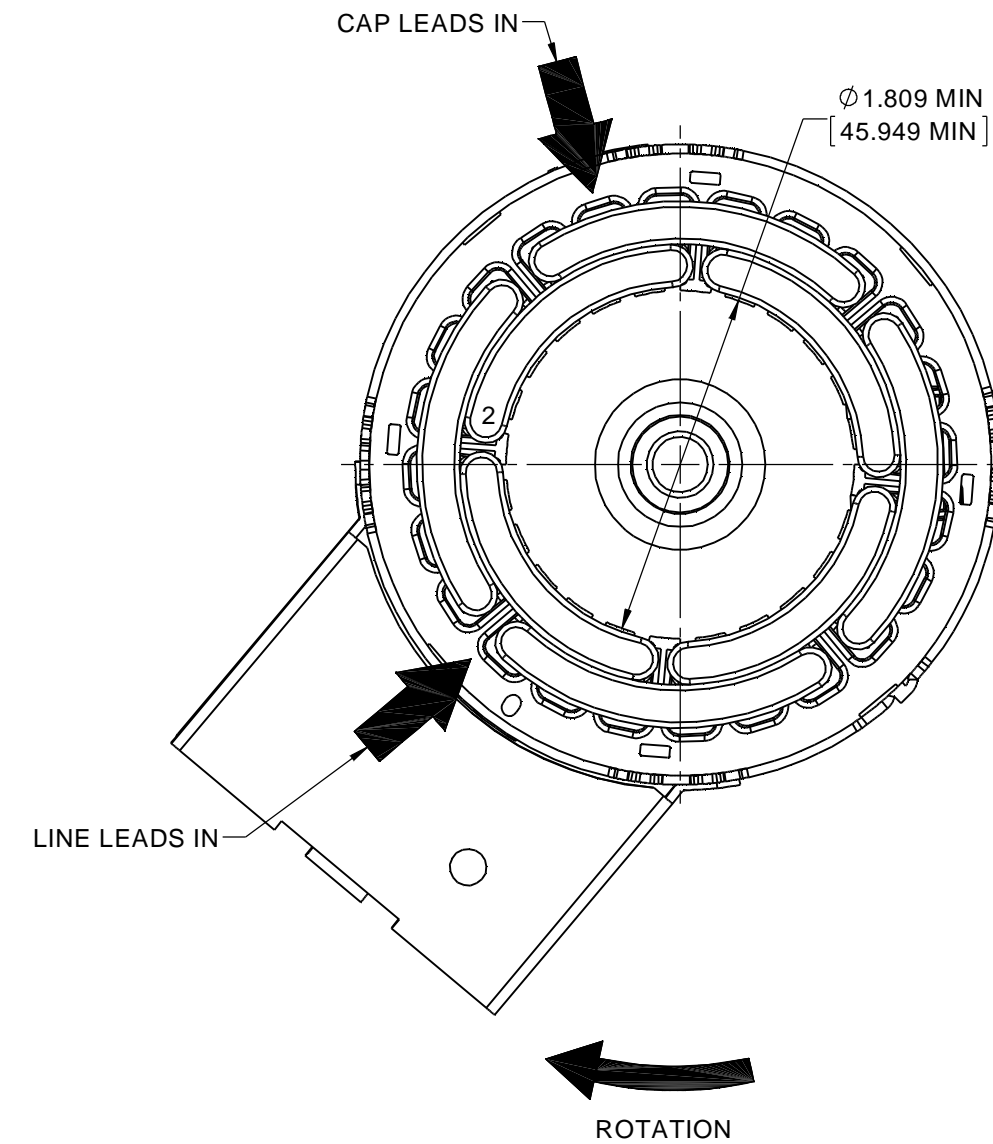
NOTES:

1. STAKE STATOR TO SLEEVE PER P.S. 88830264.
2. MAXIMUM TORQUE REQUIRED TO TURN MOTOR SHAFT IS 3/4 INCH-OUNCE.
3. MAKE-UP WASHERS ARE TO BE ADDED OR DELETED TO ACHIEVE REQUIRED ENDPLAY.
4. CUT BROWN LEADS TO LENGTH, STRIP TO .22 ± .06 [5.59 ± 1.52] AND ATTACH TERMINALS.
5. ATTACHED TERMINALS MUST MEET SPECIFICATIONS ON PROCESS STANDARD.
6. ASSEMBLE (1) NUT TO CLIP PLATE WELD BOLT AND (1) EACH WASHER (CUPPED SIDE OUT) AND NUT TO WELD BOLT INSIDE CONDUIT BOX AND TIGHTEN FINGER TIGHT.
7. RE-CUT LINE LEADS TO LENGTH AND STRIP TO .50 ± .06 [12.70 ± 1.52].
8. ASSEMBLE OIL SLINGERS SO THEY ARE FLUSH WITH THE INSIDE EDGE OF EXTERNAL CAPS.
9. BRING LINE LEADS DIRECTLY OUT LEAD EXIT. IGNORE POSITION OF OTHER LEADS, THEY WILL ROTATE BACK TO THEIR LEAD EXIT.

WELD END



CLIP END



MEXICO PACKING SPECIFICATIONS

1. PACK PER P.S. 88834200. 1 PER CONTAINER, 14 PER LAYER, 6 LAYERS 84 MOTORS MAX. PER PALLET.
2. PLACE (1) FILLER TUBE OVER EACH SHAFT EXTENSION, PLACE MOTOR IN CARTON, CLOSE FLAPS AND TAPE. PLACE CARTON LABEL ON END OF CARTON.
3. PLACE (1) FLAT PAD ON PALLET, (1) BETWEEN EACH LAYER AND (1) ON TOP. TRIM FLAT PADS SO THEY DO NOT EXTEND PAST OUTER EDGE OF CARTONS.
4. CARTON LABELS MUST ALL FACE ONE DIRECTION TOWARD THE OPEN END OF THE PALLET. SEE P.S. 88834408.
5. PLACE ALL INSPECTION STICKERS AND WRITING ON TOP FLAT PAD.
6. NO PACKAGING TAPE OVER CARTON LABEL.

DRAWING REVISION L	REVISION BY SED	DATE 4/30/2015	TOLERANCES UNLESS OTHERWISE SPECIFIED: DEC. INCH mm ANGLE .X ±0.1 [±2.5] ±0.5° .XX ±0.01 [±0.25] .XXX ±0.005 [±0.127] .XXXX ±0.0005 [±0.0127]	DRAWN BY SED	Regal Beloit America, Inc.		
ECO-0068177	APPROVED BY MLM	DATE 4/30/2015	DATE 4/30/2015	DATE 4/30/2015			
ECO DESCRIPTION CORRECTED CONDUIT BOX DIMENSION			REMOVE BURRS & BREAK SHARP EDGES: .003/.015 [076/.381] CORNER FILLETS: .02 [51] MACHINED SURFACES: 125/ mm 3.2/ INCH √ mm √ mm SHOWN IN [BRACKETS]	APPROVED BY MLM	DESCRIPTION MOTOR ASSY		
<small>COPYRIGHT REGAL BELOIT AMERICA, INC. ALL RIGHTS RESERVED. PROPRIETARY AND CONFIDENTIAL INFORMATION- THIS DOCUMENT IS THE PROPERTY OF REGAL BELOIT AMERICA, INC. ('OWNER') AND CONTAINS OWNER'S PROPRIETARY INFORMATION. ANY PERSON, CORPORATION OR OTHER FIRM RECEIVING IT IS DEEMED, BY RECEIVING IT, TO AGREE THAT IT, AND/OR ANY PART OF IT, SHALL NOT BE DISCLOSED TO ANY PERSON, CORPORATION OR OTHER ENTITY, DUPLICATED, AND/OR USED, EXCEPT AS EXPRESSLY APPROVED IN WRITING IN ADVANCE BY OWNER. THIS DOCUMENT SHALL BE RETURNED TO OWNER UPON REQUEST. IT MAY BE SUBJECT TO CERTAIN RESTRICTIONS UNDER APPLICABLE EXPORT CONTROL LAWS AND REGULATIONS.</small>			DATE 4/30/2015	MATERIAL	PROCESS/FINISH BLACK PAINT		
				THIRD ANGLE PROJECTION	SIZE C	DRAWING NUMBER 71902354	SHEET 2 OF 2