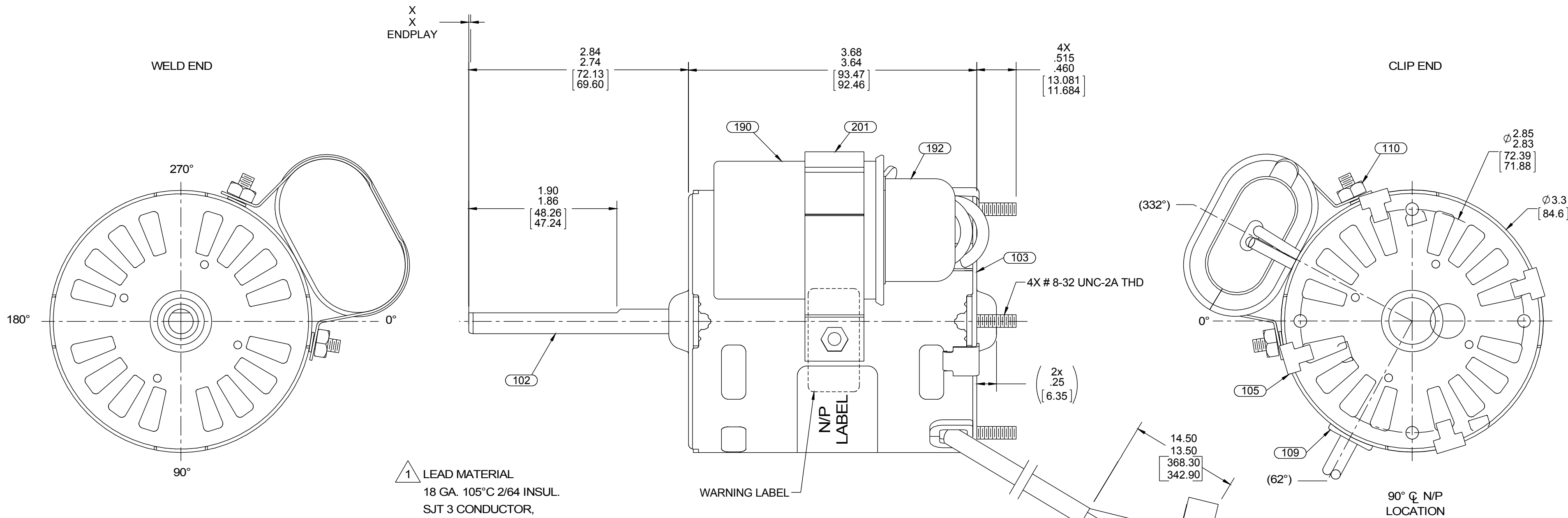


4

3

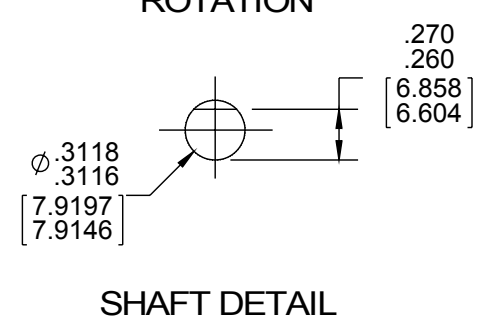
2

1



1 LEAD MATERIAL  
 18 GA. 105°C 2/64 INSUL.  
 SJT 3 CONDUCTOR,  
 WHITE, BLACK, GRN/YEL  
 32.00/30.00[812.80/762.00] IN. LONG  
 WHITE, AND BLACK  
 W/FLAG TERM. 8903 9162  
 AMP #2-520128-2  
 GRN/YEL W/ RING TERM. 8902 0157  
 AMP #350436-2

1 CAPACITOR LEADS  
 18 GA. 125°C 2/64 INSUL.  
 X-LINKED POLY, (2) BROWN,  
 6.00/4.00[152.40/101.60] IN. LONG  
 W/FLAG TERM. 8903 4045  
 AMP #42742-2



NOTES:  
 1. LEAD MATERIAL MUST BE FT1, FT2, AND VW-1 RATED.  
 2. NO PACKAGING TAPE OVER CARTON LABEL.

6130 5568

**SAFETY WARNING**  
 This motor must be grounded in accordance with local or national electrical codes to prevent possible injury due to electrical shock

**AVERTISSEMENT DE SÉCURITÉ**  
 Ce moteur doit être fondée sur conformément à la réglementation locale ou national électrique codes pour prévenir d'éventuelles blessures en raison de choc électrique

0046 4072

**FASCO** Fasco Industries, Inc. Motor Division  
 Assembled in Mexico  
 No. 71903305 TYPE U9081  
 208-230 60/50 Hz  
 0.34 A 1550 RPM  
 Model D1137  
 Max Amb. 40°C E46205  
 Thermally Protected

61299553

0046 9071

Connection Diagram  
 Wht ——— Line  
 Blk ——— Line  
 Brn ——— Grd  
 Grn/Yel ——— Grd

3 MFD/370 VAC

APPLY IN A CONVENIENT LOCATION TO READ FROM CLIP END

|                       |                        |
|-----------------------|------------------------|
| CUSTOMER PN: D1137    | ENVIRONMENT: DRY       |
| CUSTOMER: FASCO DIST. | APPLICATION: -         |
|                       | MOTOR WEIGHT: 3.75 LBS |

|  |                                    |            |      |       |      |           |      |       |     |        |       |                         |
|--|------------------------------------|------------|------|-------|------|-----------|------|-------|-----|--------|-------|-------------------------|
| SIGNED:<br>DATE:                       | FRONT SHAFT POSITION<br>UP<br>DOWN | MOTOR TYPE |      |       |      |           |      |       |     |        |       | REFERENCE SAMPLE NUMBER |
|  |                                    | P.S.C      |      |       |      |           |      |       |     |        |       | 71903144                |
|  |                                    | B          | LA   | FR    | A    | S         | C    | E     | B   | A      |       |                         |
|  |                                    | 00         | 90   | 30    | V    | 05        | GQ   | 5     | 0   | 0      |       |                         |
| TYPICAL PERFORMANCE AT 230 VOLTS 60 HZ |                                    | IDLE       |      |       |      | FULL LOAD |      |       |     | LOCKED |       | BREAK                   |
| MOTOR SPEED                            | RPM                                | AMP        | WATT | IN OZ | RPM  | AMP       | WATT | IN OZ | AMP | WATT   | IN OZ |                         |
|  | 1785                               | .15        | 32   | 32.5  | 1550 | .30       | 69   | 10.6  | .46 | 100    | 34.3  |                         |

|   |                        |                    |   |                        |                                       |                                   |
|---|------------------------|--------------------|---|------------------------|---------------------------------------|-----------------------------------|
| DRAWING REVISION<br>B   | REVISION BY<br>G.ZHAO  | DATE<br>06-24-2015 | TOLERANCES UNLESS OTHERWISE SPECIFIED:<br>DEC. INCH ±0.1 [±2.5]<br>.XX ±0.01 [±0.25]<br>.XXX ±0.005 [±0.127]<br>.XXXX ±0.0005 [±0.0127] | DRAWN BY<br>SD         | DATE<br>10-17-2011                    | REGAL™ Regal Beloit America, Inc. |
| ECO-0075858   | APPROVED BY<br>C.ZHANG | DATE<br>06-24-2015 | ANGLE ±0.5°   | APPROVED BY            | DESCRIPTION<br>MODEL-SFHP-3.3 OUTLINE | PROCESS/FINISH<br>BLACK PAINT     |
| SEE ECO   |                        |                    | REMOVE BURRS & BREAK SHARP EDGES: .003/.015 [0.076/.381] X 45°<br>CORNER FILLETS: R.02 [51]<br>MACHINED SURFACES: 125/3.2 INCH/mm       | DATE                   | MATERIAL                              | THIRD ANGLE PROJECTION            |
| COPYRIGHT REGAL BELOIT AMERICA, INC. ALL RIGHTS RESERVED. PROPRIETARY AND CONFIDENTIAL INFORMATION - THIS DOCUMENT IS THE PROPERTY OF REGAL BELOIT AMERICA, INC. (OWNER) AND CONTAINS OWNERS PROPRIETARY INFORMATION. ANY PERSON, CORPORATION OR OTHER FIRM RECEIVING IT IS DEEMED, BY RECEIVING IT, TO AGREE THAT IT, AND/OR ANY PART OF IT, SHALL NOT BE DISCLOSED TO ANY PERSON, CORPORATION OR OTHER ENTITY, DUPLICATED, AND/OR USED, EXCEPT AS EXPRESSLY APPROVED IN WRITING IN ADVANCE BY OWNER. THIS DOCUMENT SHALL BE RETURNED TO OWNER UPON REQUEST. IT MAY BE SUBJECT TO CERTAIN RESTRICTIONS UNDER APPLICABLE EXPORT CONTROL LAWS AND REGULATIONS. |                        |                    | DATE  | REFERENCE              | SIZE C                                | DRAWING NUMBER<br>71903305        |
|   |                        |                    | mm SHOWN IN [BRACKETS]  | THIRD ANGLE PROJECTION | SHEET<br>1 OF 2                       |                                   |

4

3

2

1

D

D

C

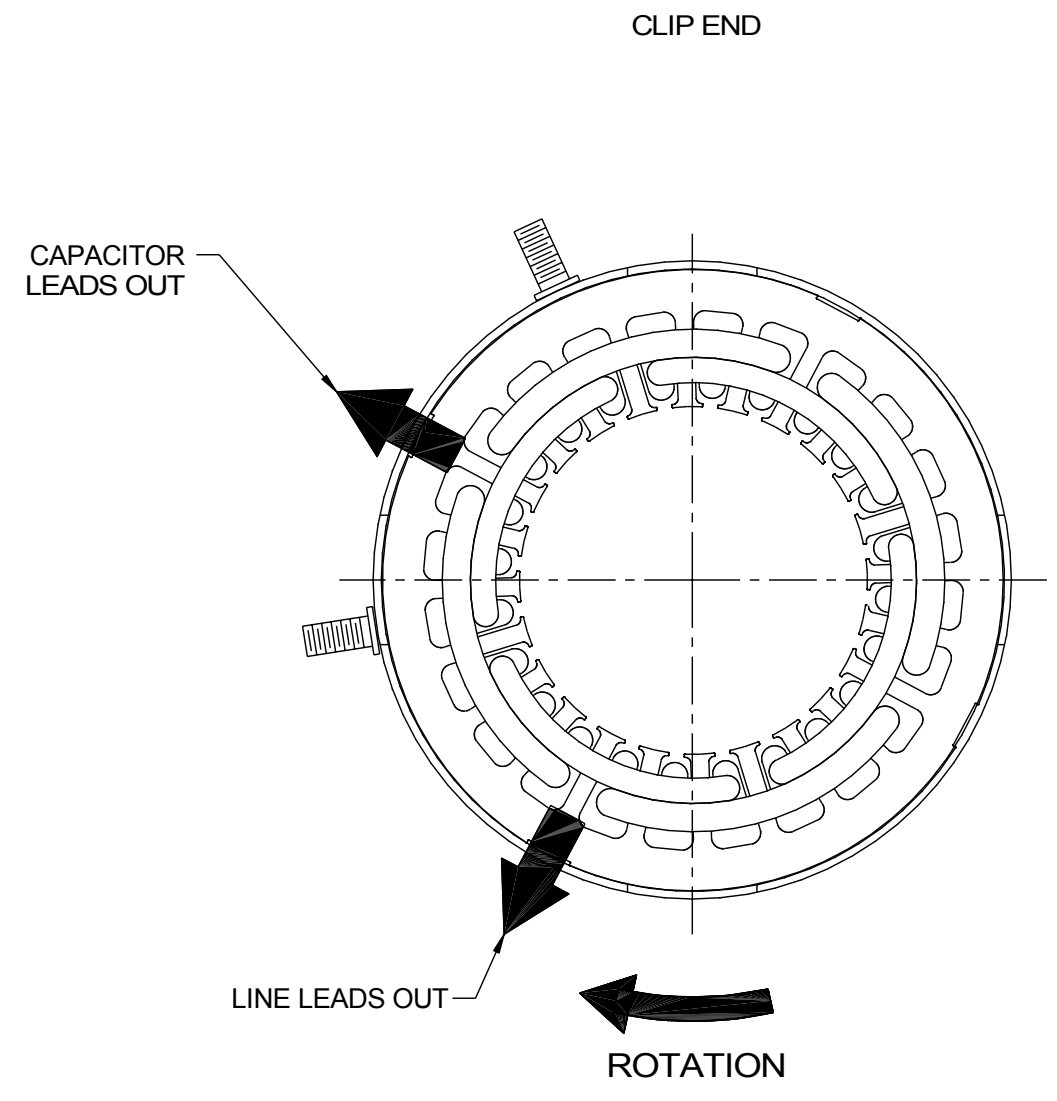
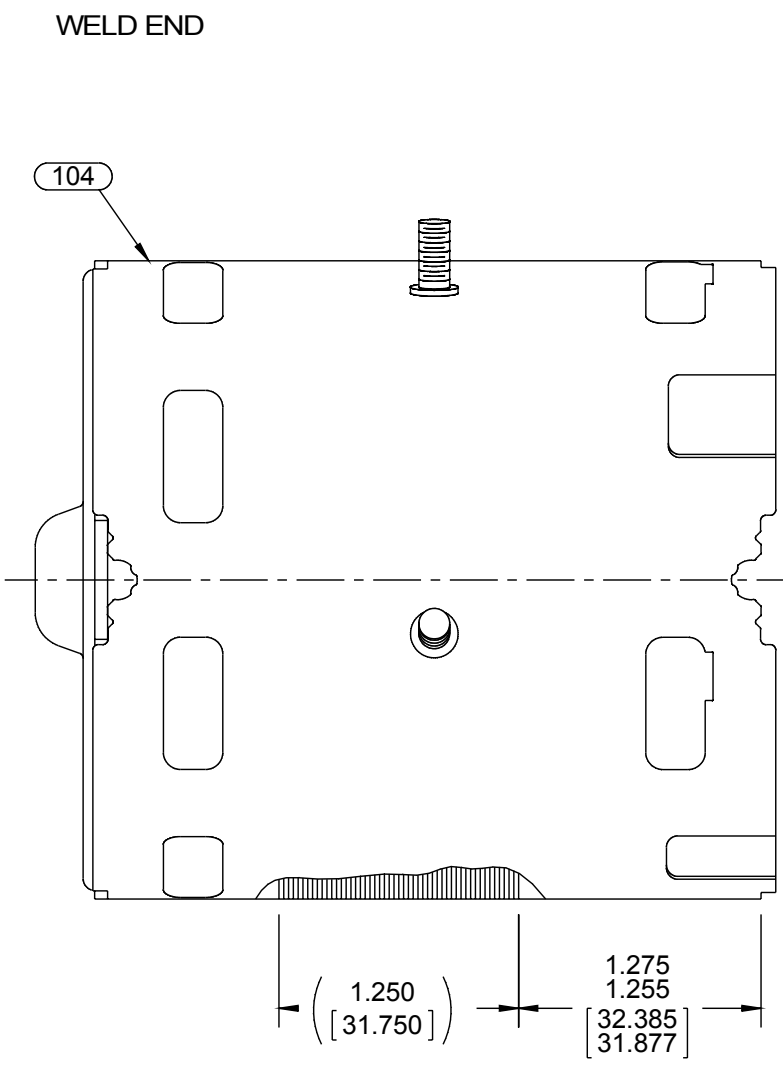
C

B

B

A

A



NOTES:

1. STAKE STATOR TO SLEEVE PER P.S. 8883 0264.
2. MAXIMUM TORQUE REQUIRED TO TURN MOTOR SHAFT IS 3/8 INCH-OUNCE.
3. ASSEMBLE SPRING BETWEEN WASHER AND BEARING ON CLIP END, WITH SPRING FINGERS TOWARDS BEARING.
4. ASSEMBLE BALL BEARINGS TO BEARING RETAINERS PER WORK CENTER PROCESS.
5. BRING LINE LEADS DIRECTLY OUT LEAD EXIT. IGNORE POSITION OF OTHER LEADS , THEY WILL ROTATE BACK TO THEIR LEAD EXIT.
6. WHEN PRESSING ON SLEEVE, ROTATE SLEEVE C.C.W. SO THAT THE EDGE OF JACKET IS INSIDE SLEEVE.

PACKING SPECIFICATIONS

1. PACK PER P.S. 8883 4200. 1 PER CONTAINER, 175 MAX. PER PALLET, 25 PER LAYER, 7 LAYERS PER PALLET.
2. PLACE CARTON LABEL ON SHAFT END OF CARTON. CARTON LABELS MUST ALL FACE ONE DIRECTION TOWARD THE OPEN END OF THE PALLET. SEE P.S. 8883 4408.
3. PLACE FOAM RING ON CLIP END OF MOTOR. PLACE FILLER TUBE OVER SHAFT EXTENSION AND PLACE IN CARTON. STUFF PAPER AROUND MOTOR TO PREVENT MOVEMENT DURING SHIPPING.
4. PLACE (1) FLAT PAD ON PALLET, (1) BETWEEN EACH LAYER AND (1) ON TOP.

|   |                        |                    |  |                        |  |
|---|------------------------|--------------------|--|------------------------|--|
| DRAWING REVISION<br>B   | REVISION BY<br>G.ZHAO  | DATE<br>06-24-2015 | TOLERANCES UNLESS OTHERWISE SPECIFIED:<br>DEC. INCH mm ANGLE   | DRAWN BY<br>SD         | Regal Beloit America, Inc.               |
| ECO<br>ECO-0075858  | APPROVED BY<br>C.ZHANG | DATE<br>06-24-2015 | .X ±0.1 [±2.5] ±0.5°<br>.XX ±0.01 [±0.25]<br>.XXX ±0.005 [±0.127]<br>.XXX ±0.0005 [±0.0127]  | DATE<br>10-17-2011     |  |
| ECO DESCRIPTION<br>SEE ECO  |                        |                    | REMOVE BURRS & BREAK SHARP EDGES: .003/.015 [.076/.381] X 45°<br>CORNER FILLETS: R.02 [.51]<br>MACHINED SURFACES: 125/ mm 3.2/ INCH mm | APPROVED BY            | DESCRIPTION<br>MODEL-SFHP-3.3<br>OUTLINE |
| <small>COPYRIGHT REGAL BELOIT AMERICA, INC. ALL RIGHTS RESERVED. PROPRIETARY AND CONFIDENTIAL INFORMATION - THIS DOCUMENT IS THE PROPERTY OF REGAL BELOIT AMERICA, INC. ("OWNER") AND CONTAINS OWNER'S PROPRIETARY INFORMATION. ANY PERSON, CORPORATION OR OTHER FIRM RECEIVING IT IS DEEMED, BY RECEIVING IT, TO AGREE THAT IT, AND/OR ANY PART OF IT, SHALL NOT BE DISCLOSED TO ANY PERSON, CORPORATION OR OTHER ENTITY, DUPLICATED, AND/OR USED, EXCEPT AS EXPRESSLY APPROVED IN WRITING IN ADVANCE BY OWNER. THIS DOCUMENT SHALL BE RETURNED TO OWNER UPON REQUEST. IT MAY BE SUBJECT TO CERTAIN RESTRICTIONS UNDER APPLICABLE EXPORT CONTROL LAWS AND REGULATIONS.</small> |                        |                    | DATE   | REFERENCE              | MATERIAL                                 |
|   |                        |                    | mm SHOWN IN [BRACKETS]   | THIRD ANGLE PROJECTION | PROCESS/FINISH<br>BLACK PAINT            |
|   |                        |                    |  | SIZE<br>C              | DRAWING NUMBER<br>71903305               |
|   |                        |                    |  |                        | SHEET<br>2 OF 2                          |

4

3

2

1