

NOTES

1. THRU AIR SPACING BETWEEN WIRE AND METAL .063 MIN.
2. TIE BOLT TORQUE TOLERANCE 7 - 10 IN. LBS.
3. ROTOR FREENESS TO BE WITHIN 3/4 OZ. IN.
4. FOR WASHER SET-UP, SEE CHART C600 0279, DETAIL "P".
5. MAXIMUM 0.1 Ω RESISTANCE BETWEEN GROUND TERMINAL AND MOTOR FRAME.
6. SALES TO SPECIFY ON P.O. WHICH PACK TO USE.

ECO	REV.	DATE	SPEC/CHECK
631116	30	5-7-03	MKR/MKR
638638	31	9-18-08	LDC/LDC
640180	32	07-27-09	GAE/GAE
4005983	33	07/11/2012	MLM/KSA

71xx xxxx, M

- A. SEE PACKAGING MANUAL PAGE 2 FOR PACKAGING PROCEDURES.
- 1 MOTOR/CARTON;
  - 40 MOTORS/LAYER;
  - 6 LAYERS/PALLET;
  - 240 MOTORS/PALLET.
- B. SEE DRAWING 8785 6079 SH. 1 FOR PALLET LAYOUT.
- C. CENTER CARTON LABEL ON END OF CARTON.
- D. PLACE PAMPHLET, 6122 4579, IN CARTON WITH MOTOR.
- E. CARTON LABELS MUST ALL FACE ONE DIRECTION TOWARD THE OPEN END OF THE PALLET. SEE P.S. 8883 4408.
- F. NO PACKAGING TAPE OVER CARTON LABEL.

71xx xxxxC

PRODUCTION TEST AT IDLE 115 VOLTS 60 HZ		MOTOR SPEED	PERFORMANCE TEST 115 VOLTS 60 HZ 1 PH 1/10 HP										
AMP	WATT		IDLE			LOADED				LOCKED			BREAK
			RPM	AMP	WATT	OZ/IN	RPM	AMP	WATT	OZ/IN	AMP	WATT	OZ/IN
2.93 — 2.39	143.0 — 117.0	HIGH	1774	2.66	130	82	1500	3.4	232	28	4.74	281	82

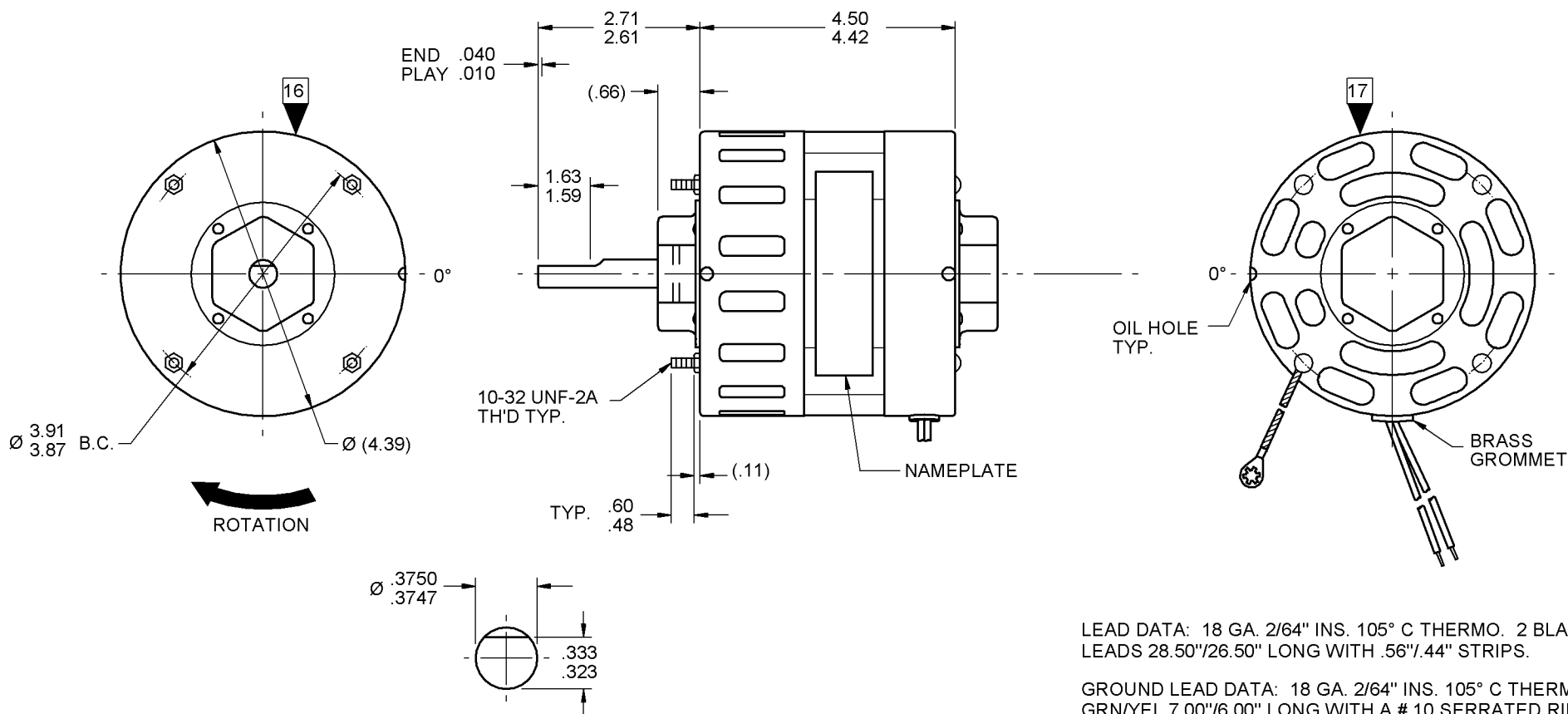
HI-POT TEST 2000 VOLTS MOTORS MUST START WITH 90 VOLTS APPLIED TO LOWEST SPEED.

MAX LEAKAGE CURRENT 5 mA

7108 0195 MA

OPPOSITE LEAD END

LEAD END



LEAD DATA: 18 GA. 2/64" INS. 105° C THERMO. 2 BLACK LEADS 28.50"/26.50" LONG WITH .56"/.44" STRIPS.

GROUND LEAD DATA: 18 GA. 2/64" INS. 105° C THERMO. GRN/YEL 7.00"/6.00" LONG WITH A # 10 SERRATED RING TERMINAL.

00464072

00464282

**FASCO** Motor Division  
Assembled in Mexico  
No. 71080195 TYPE U8  
115 V 60 Hz  
3.6 A 1500 RPM  
Model D112  
Thermally Protected

**SAFETY WARNING**  
This Motor Must Be Grounded in Accordance With Local Or National Electrical Codes To Prevent Possible Injury Due To Electrical Shock

61299553

LOCATE Ⓞ OF NAMEPLATE ON Ⓞ OF STATOR TO READ RIGHT FROM LEAD END OF MOTOR CENTER AT 0°.

SPECIAL INSTRUCTIONS: SHAFT IS BONDERIZED. PAMPHLET PACKED WITH MOTOR.

MOTORS PACKED MAX. PER SKID: PALLET PACK, 240 CARTON PACK.

CUSTOMER: FASCO DISTRIBUTING CO. PROPRIETARY: DO NOT DUPLICATE OR DISCLOSE TO THIRD PARTIES WITHOUT WRITTEN PERMISSION OF FASCO IND. INC., ELDON MO.

PART NUMBER: D112 FASCO MOTOR DIVISION ELDON PLANT

APPLICATION:	MOTOR TYPE	MOTOR NUMBER	REV.
FINISH COLOR: GRAY	SHADED POLE	7108 0195	33
MOTOR WEIGHT: LBS.			
ENVIRONMENT: DRY			
INSULATION CLASS: A			

8689 6579 1