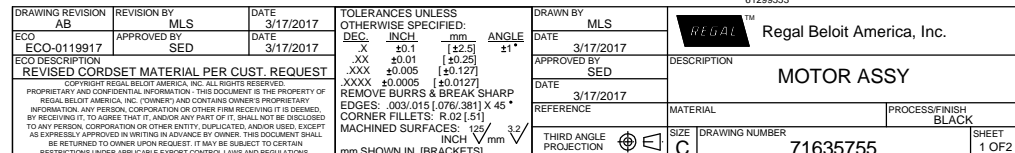
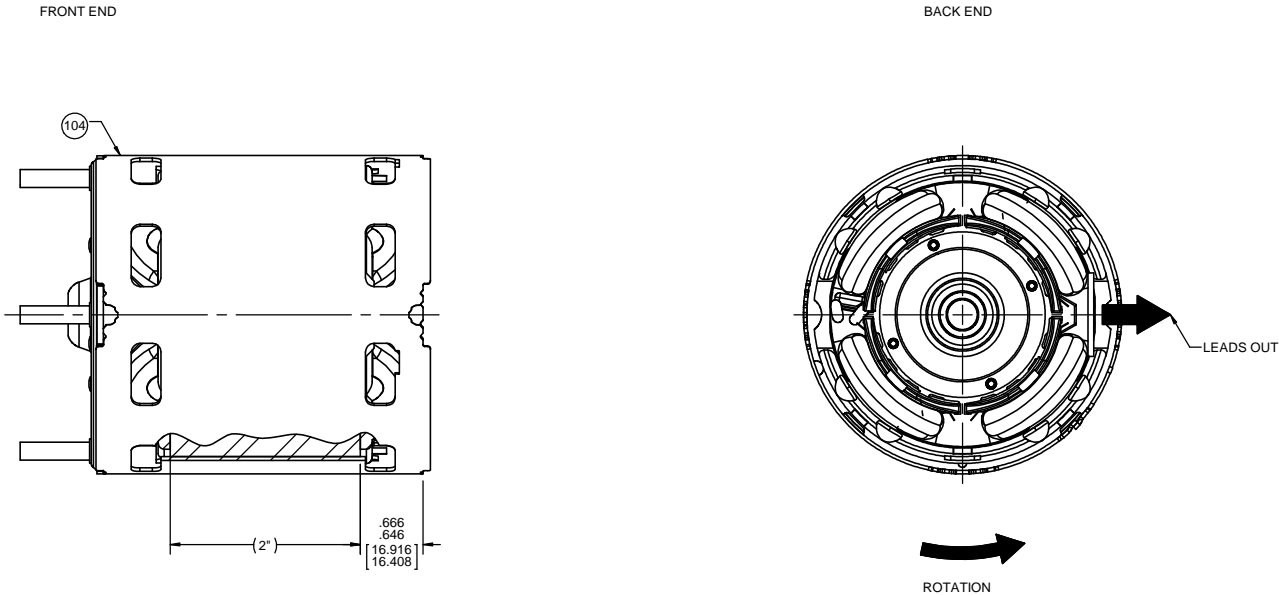


1



- NOTES:
1. STAKE STATOR TO MAIN FRAME PER 88830264.
 2. MAXIMUM TORQUE REQUIRED TO TURN MOTOR SHAFT IS 3/8 INCH-OUNCE.
 3. MAKE-UP WASHERS ARE TO BE ADDED OR DELTED TO ACHIEVE REQUIRED ENDPLAY.



PACKING SPECIFICATIONS

1. PACK 1 PER CONTAINER, 45 CONTAINERS PER LAYER, 6 LAYERS PER PALLET, 270 MAX. PER PALLET. PACKING ASSY. 88834200.
2. PLACE FOAM RING ON WELD BOLTS OPPOSITE SHAFT END OF MOTOR AND FILLER TUBE OVER SHAFT. PLACE MOTOR IN CARTON SHAFT UP. CLOSE FLAPS AND TAPE.
3. CARTON LABELS MUST ALL FACE ONE DIRECTION TOWARD THE OPEN END OF THE PALLET. SEE 88834406.
4. PLACE (1) FLAT PAD BETWEEN EACH LAYER. PLACE ALL INSPECTION STICKERS AND WRITING ON FLAT PAD.
5. PLACE (4) NUTS IN PLASTIC BAG AND SECURE. PLACE BAG IN BOX.

DRAWING REVISION AB	REVISION BY MLS	DATE 3/17/2017	TOLERANCES UNLESS OTHERWISE SPECIFIED: DEC. INCH mm ANGLE X .01 [±.25] 1° XX .01 [±.25] XXX ±0.005 [±0.127] .XXXX ±0.0005 [±0.0127] REMOVE BURRS & BREAK SHARP EDGES: .003/.015 [0.076/.381] X 45° CORNER FILLETS: R.02 [51] MACHINED SURFACES: 125/32 INCH/mm V mm SHOWN IN [BRACKETS]	DRAWN BY MLS	DATE 3/17/2017	DESCRIPTION MOTOR ASSY	PROCESS/FINISH BLACK
ECO ECO-0119917	APPROVED BY SED	DATE 3/17/2017	THIRD ANGLE PROJECTION	SIZE C	DRAWING NUMBER 71635755	SHEET 2 OF 2	