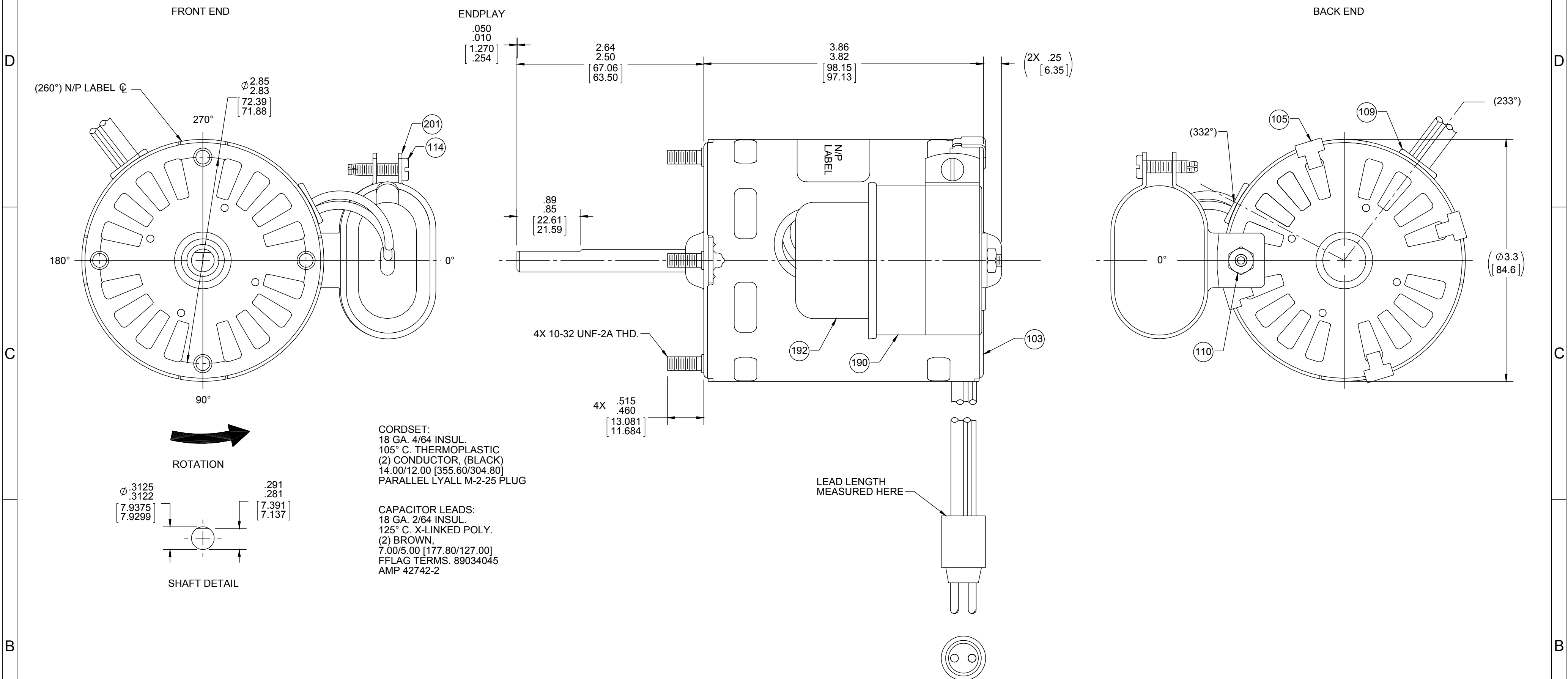


ORACLE PART REV. 013



## NOTES:

1. MOTOR HAS 416 S.S. SHAFT.
2. MOTOR MEETS VDE SPECIFICATIONS.
3. LINE LEAD EXIT HAS A .127 [3.226] DIAMETER HOLE LOCATED APPROXIMATELY 19° ON EITHER SIDE OF IT'S CENTER LINE.
4. PACK 150 MOTORS MAX. PER PALLET.
5. NO PACKAGING TAPE OVER CARTON LABELS.

A

CUSTOMER:		FASCO DIST.		APPLICATION:		WALK IN COOLER							
CUSTOMER PN:		D1125		MOTOR WEIGHT:		3.63 LBS.							
<div><div>HORIZONTAL</div><div>UP</div><div>DOWN</div></div>				ENVIRONMENT:		DRY							
		MOTOR TYPE						REFERENCE SAMPLE					
		P.S.C.											
		B	LA	FR	A	S	C	E	B	A			
	00	90	30	V	05	ON	5	3	0				
TYPICAL PERFORMANCE AT 208-230 VOLTS 50/60 HZ								CAP: 4 MFD/370 VAC					
	IDLE			LOADED				LOCKED			BREAK		
MOTOR SPEED	RPM	AMP	WATT	IN OZ	RPM	AMP	WATT	IN OZ	AMP	WATT	IN OZ		
208/50	1479	.25	47	29.1	1400	.33	69	17.8	.76	157	54.4		
208/60	1778	.20	40	42.2	1550	.46	92	17.7	.70	141	45.9		
230/50	1480	.30	63	34.3	1400	.37	84	21.7	.82	189	65.5		
230/60	1781	.24	55	51.9	1550	.50	111	22.0	.76	172	56.7		

SAFETY WARNING  
This motor must be grounded in accordance with local or national electrical codes to prevent possible injury due to electrical shock



AVERTISSEMENT  
DE SÉCURITÉ  
Ce moteur doit être fondée sur conformément à la réglementation locale ou national électrique codes pour prévenir d'éventuelles blessures en raison de choc électrique

APPLY IN A CONVENIENT LOCATION  
TO READ FROM CLIP END



Fasco Industries, Inc.  
Motor Division



Connection Diagram

Blk — Line  
Blk — Line  
Brn —  
Brn —

Assembled in Mexico  
No. 71902084  
208-230 V  
0.4/0.5 A  
Model D1125

TYPE U90B1  
50/60 Hz  
1400/1550 RPM  
E40513

T.P. AO  
Class B  
1/20/1/15 HP

4 MFD/370 VAC

61299553

DRAWING REVISION P	REVISION BY RPT	DATE 11/13/2015	TOLERANCES UNLESS OTHERWISE SPECIFIED: DEC. INCH mm ANGLE .X ±0.1 [±2.5] .XX ±0.01 [±0.25] .XXX ±0.005 [±0.127] .XXXX ±0.0005 [±0.0127] REMOVE BURRS & BREAK SHARP EDGES: .003/.015 [.076/.381] X 45° CORNER FILLETS: R.02 [.51] MACHINED SURFACES: 125/3.2 INCH mm mm SHOWN IN [BRACKETS]	DRAWN BY S.DALTON	DATE 08-17-2001	APPROVED BY	DESCRIPTION MOTOR ASSY
ECO-0088873	APPROVED BY JMG	DATE 11/13/2015	ECO DESCRIPTION REMOVE LR6319 FROM LABEL	DATE	REFERENCE	MATERIAL	PROCESS/FINISH
COPYRIGHT REGAL BELOIT AMERICA, INC. ALL RIGHTS RESERVED. PROPRIETARY AND CONFIDENTIAL INFORMATION - THIS DOCUMENT IS THE PROPERTY OF REGAL BELOIT AMERICA, INC. ("OWNER") AND CONTAINS OWNER'S PROPRIETARY INFORMATION. ANY PERSON, CORPORATION OR OTHER FIRM RECEIVING IT IS DEEMED, BY RECEIVING IT, TO AGREE THAT IT, AND/OR ANY PART OF IT, SHALL NOT BE DISCLOSED TO ANY PERSON, CORPORATION OR OTHER ENTITY, DUPLICATED, AND/OR USED, EXCEPT AS EXPRESSLY APPROVED IN WRITING IN ADVANCE BY OWNER. THIS DOCUMENT SHALL BE RETURNED TO OWNER UPON REQUEST. IT MAY BE SUBJECT TO CERTAIN RESTRICTIONS UNDER APPLICABLE EXPORT CONTROL LAWS AND REGULATIONS.				THIRD ANGLE PROJECTION	SIZE C	DRAWING NUMBER 71902084	SHEET 1 OF 2

4

3

2

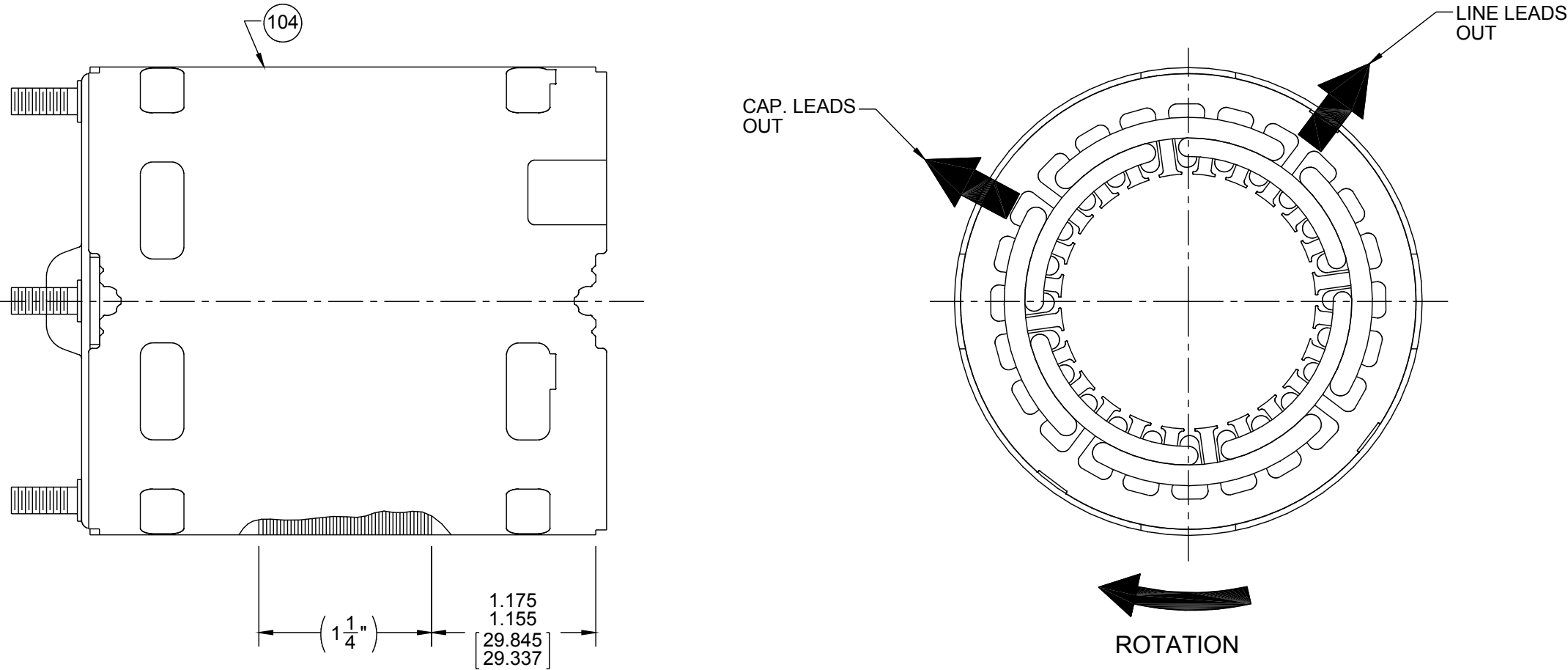
1

ORACLE PART REV. 013

- NOTES:
1. STAKE STATOR TO SLEEVE PER 88830264.
  2. MAXIMUM TORQUE REQUIRED TO TURN MOTOR SHAFT IS 3/8 IN. OZ.
  3. MAKE UP WASHERS ARE TO BE ADDED OR DELETED TO ACHIEVE REQUIRED ENDPLAY.
  4. SEE ROTOR AND SHAFT DRAWING FOR WASHER SET-UP.
  5. LEAD RIP MUST NOT EXTEND OUTSIDE OF SLEEVE.
  6. PLACE LOCK WASHER BETWEEN CAPACITOR BRACKET AND MOTOR.


FRONT END

BACK END



PACKING SPECIFICATIONS

1. PACK PER 88834200. 1 PER CARTON, 25 PER LAYER, 6 LAYERS PER PALLET, 150 MAX. AMT. PER PALLET.
2. PLACE FOAM RING ON CLIP END OF MOTOR. PLACE FILLER TUBE OVER SHAFT EXTENSION AND PLACE IN CARTON. STUFF PAPER AROUND MOTOR TO PREVENT MOVEMENT DURING SHIPMENT.
3. CARTON LABELS MUST ALL FACE ONE DIRECTION TOWARD THE OPEN END OF THE PALLET. SEE 88834408.
4. PLACE (1) FLAT PAD ON PALLET, (1) BETWEEN EACH LAYER AND (1) ON TOP.

DRAWING REVISION P	REVISION BY RPT	DATE 11/13/2015	TOLERANCES UNLESS OTHERWISE SPECIFIED: DEC. INCH mm ANGLE ±1°	DRAWN BY S.DALTON	 Regal Beloit America, Inc.	
ECO ECO-0088873	APPROVED BY JMG	DATE 11/13/2015	.X ±0.1 [±2.5] .XX ±0.01 [±0.25] .XXX ±0.005 [±0.127] .XXXX ±0.0005 [±0.0127]	DATE 08-17-2001		
ECO DESCRIPTION REMOVE LR6319 FROM LABEL			REMOVE BURRS & BREAK SHARP EDGES: .003/.015 [.076/.381] X 45° CORNER FILLETS: R.02 [.51]	APPROVED BY	DESCRIPTION MOTOR ASSY	
COPYRIGHT REGAL BELOIT AMERICA, INC. ALL RIGHTS RESERVED. PROPRIETARY AND CONFIDENTIAL INFORMATION - THIS DOCUMENT IS THE PROPERTY OF REGAL BELOIT AMERICA, INC. ("OWNER") AND CONTAINS OWNER'S PROPRIETARY INFORMATION. ANY PERSON, CORPORATION OR OTHER FIRM RECEIVING IT IS DEEMED, BY RECEIVING IT, TO AGREE THAT IT, AND/OR ANY PART OF IT, SHALL NOT BE DISCLOSED TO ANY PERSON, CORPORATION OR OTHER ENTITY, DUPLICATED, AND/OR USED, EXCEPT AS EXPRESSLY APPROVED IN WRITING IN ADVANCE BY OWNER. THIS DOCUMENT SHALL BE RETURNED TO OWNER UPON REQUEST. IT MAY BE SUBJECT TO CERTAIN RESTRICTIONS UNDER APPLICABLE EXPORT CONTROL LAWS AND REGULATIONS.			MACHINED SURFACES: 125 INCH mm 3.2 mm SHOWN IN [BRACKETS]	DATE	MATERIAL	PROCESS/FINISH
				REFERENCE	DRAWING NUMBER 71902084	
				THIRD ANGLE PROJECTION	SIZE C	SHEET 2 OF 2

4

3

2

1