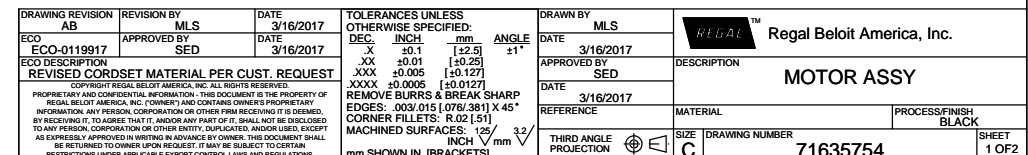
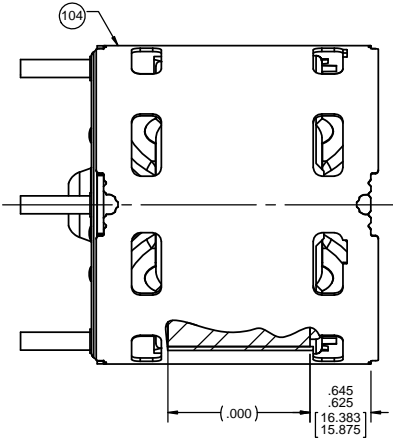


1

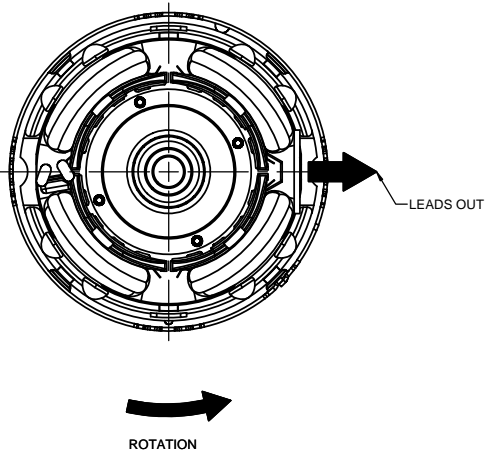


- NOTES:
1. STAKE STATOR TO MAIN FRAME PER 88830264.
 2. MAXIMUM TORQUE REQUIRED TO TURN MOTOR SHAFT IS 3/8 INCH-OUNCE.
 3. MAKE-UP WASHERS ARE TO BE ADDED OR DELTED TO ACHIEVE REQUIRED ENDPLAY.

FRONT END



BACK END



PACKING SPECIFICATIONS

1. PACK 1 PER CONTAINER, 45 CONTAINERS PER LAYER, 6 LAYERS PER PALLET, 270 MAX. PER PALLET. Per 88834200.
2. PLACE FOAM RING ON WELD BOLTS OPPOSITE SHAFT END OF MOTOR AND FILLER TUBE OVER SHAFT. PLACE MOTOR IN CARTON SHAFT UP. CLOSE FLAPS AND TAPE.
3. CARTON LABELS MUST ALL FACE ONE DIRECTION TOWARD THE OPEN END OF THE PALLET. SEE 88834408.
4. PLACE (1) FLAT PAD BETWEEN EACH LAYER. PLACE ALL INSPECTION STICKERS AND WRITING ON FLAT PAD.
5. PLACE (4) NUTS IN PLASTIC BAG AND SECURE. PLACE BAG IN BOX.

DRAWING REVISION AB		REVISION BY MLS	DATE 3/16/2017	TOLERANCES UNLESS OTHERWISE SPECIFIED:		DRAWN BY MLS	Regal Beloit America, Inc.	
ECO		APPROVED BY SED	DATE 3/16/2017	DEC.	INCH	mm		
ECO-0119917				.X	±0.1	[±2.5]	DATE 3/16/2017	DESCRIPTION MOTOR ASSY
ECO DESCRIPTION REVISED CORDSET MATERIAL PER CUST. REQUEST				.XX	±0.01	[±0.25]	APPROVED BY SED	
COPYRIGHT REGAL BELOIT AMERICA, INC. ALL RIGHTS RESERVED. PROPRIETARY AND CONFIDENTIAL INFORMATION - THIS DOCUMENT IS THE PROPERTY OF REGAL BELOIT AMERICA, INC. FORMERLY AND CONTAINS OWNER'S PROPRIETARY INFORMATION. ANY PERSON, CORPORATION OR OTHER FIRM RECEIVING IT IS DEEMED, BY RECEIVING IT, TO AGREE THAT IT, AND/OR ANY PART OF IT, SHALL NOT BE DISCLOSED TO ANY PERSON, CORPORATION OR OTHER ENTITY, DUPLICATED, AND/OR USED, EXCEPT AS EXPRESSLY APPROVED IN WRITING IN ADVANCE BY OWNER. THIS DOCUMENT SHALL BE RETURNED TO OWNER UPON REQUEST. IT MAY BE SUBJECT TO CERTAIN RESTRICTIONS UNDER APPLICABLE EXPORT CONTROL LAWS AND REGULATIONS.				.XXX	±0.005	[±0.127]	DATE 3/16/2017	MATERIAL PROCESS/FINISH BLACK
				.XXXX	±0.0005	[±0.0127]	REFERENCE	
				REMOVE BURRS & BREAK SHARP EDGES: .003/.015 [0.076/.381] X 45° CORNER FILLETS: R.02 [51]			THIRD ANGLE PROJECTION	SIZE C
				MACHINED SURFACES: 125/3.2 INCH/mm			DRAWING NUMBER 71635754	SHEET 2 OF 2
				mm SHOWN IN [BRACKETS]				