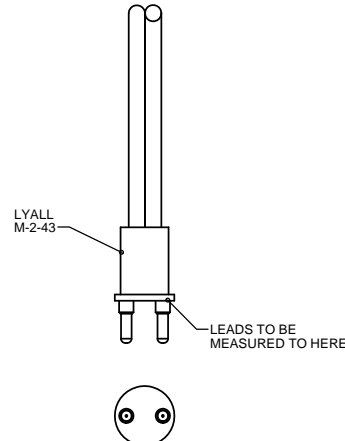
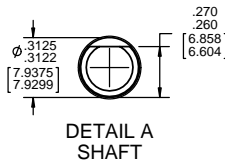


LEAD MATERIAL
18 GA. 105°C 4/64 INSUL.
PARALLEL PVC
BLACK
12.00/10.00 [304.80/254.00]



61305568

- NOTES:
1. STUDS MUST BE FREE OF PAINT.
2. MOTOR HAS 416 SS SHAFT.
3. NO PACKING TAPE OVER CARTON LABEL.

SAFETY WARNING
This motor must be grounded in accordance with local or national electrical codes to prevent possible injury due to electrical shock

AVERTISSEMENT DE SECURITE
Ce moteur doit être fondée sur conformément à la réglementation locale ou national électrique codes pour prévenir d'éventuelles blessures en raison de choc électrique

00464071

FASCO Fasco Industries, Inc. Motor Division

Assembled in Mexico

No. 71731617 TYPE U7381 T.P. AO

115 V 60 Hz Class B

2.1 A 1550 RPM 1/20 HP

Model D1120 Max Amb: 40°C

LR6319

61299553

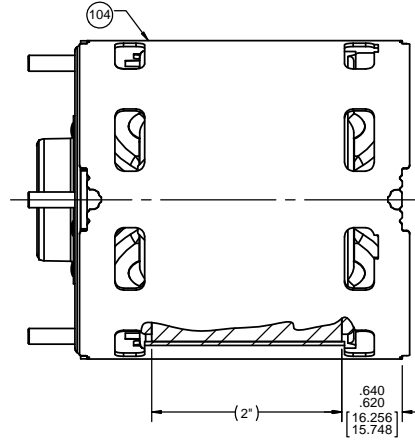
CUSTOMER:	FASCO DIST.	APPLICATION:	DIST.
CUSTOMER PN:	D1120	MOTOR WEIGHT:	4.62 LBS.
		ENVIRONMENT:	WET
UP		REFERENCE SAMPLE	
MOTOR TYPE		SHADED POLE	
B	LA	FR	A
00	73	30	V
DOWN		C	E
		EN	5
		B	A
		4	0
TYPICAL PERFORMANCE AT 115 VOLTS 60 HZ			
IDLE		LOADED	
MOTOR SPEED	RPM	AMP	WATT
1766	2.06	113	55.1
		1550	2.48
		184	23.3
		3.67	265
		62.8	
LOCKED		BREAK	

DRAWING REVISION	AA	REVISION BY	MLS	DATE	3/21/2017	TOLERANCES UNLESS OTHERWISE SPECIFIED:	DEC.	INCH	mm	ANGLE	DRAWN BY	MLS	REGAL™	Regal Beloit America, Inc.	
ECO DESCRIPTION	ECO-0119917	APPROVED BY	SED	DATE	3/21/2017	X	+0.1	[.25]	±1°	DATE	3/21/2017	DESCRIPTION	MOTOR ASSY		
REVISED CORSET MATERIAL PER CUST. REQUEST.		DATE	3/21/2017	XXX	+0.01	[.025]				APPROVED BY	SED	MATERIAL	PROCESS FINISH	BLACK	
PROPRIETARY AND CONFIDENTIAL INFORMATION - THIS DOCUMENT IS THE PROPERTY OF REGAL BELOIT AMERICA, INC. FORMERLY AND CONTAINS OWNERS PROPRIETARY INFORMATION. ANY PERSON, CORPORATION OR OTHER FIRM RECEIVING IT IS DEEMED, BY RECEIVING IT, TO AGREE THAT IT, AND/OR ANY PART OF IT, SHALL NOT BE DISCLOSED TO ANY PERSON, CORPORATION OR OTHER ENTITY, DUPLICATED, AND/OR USED, EXCEPT AS EXPRESSLY APPROVED IN WRITING IN ADVANCE BY OWNER. THIS DOCUMENT SHALL BE RETURNED TO OWNER UPON REQUEST. IT MAY BE SUBJECT TO CERTAIN RESTRICTIONS UNDER APPLICABLE EXPORT CONTROL LAWS AND REGULATIONS.		DATE	3/21/2017	.XXXX	+0.005	[.0127]				REFERENCE		SIZE	DRAWING NUMBER	71731617	
		DATE	3/21/2017	.XXXX	+0.0005	[±0.0127]				THIRD ANGLE PROJECTION		SIZE	C	SHEET	1 OF 2
		DATE	3/21/2017	.XXXX	+0.0005	[±0.0127]									

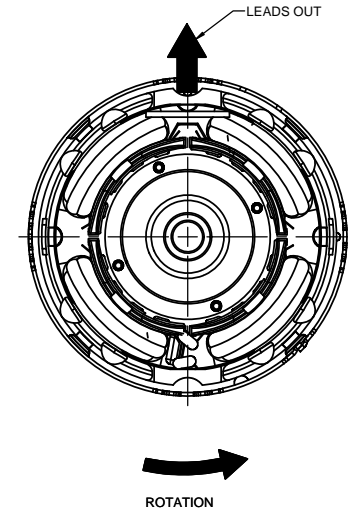
NOTES:

1. STAKE STATOR TO MAIN FRAME PER 88830264.
2. MAXIMUM TORQUE REQUIRED TO TURN MOTOR SHAFT IS 3/8 INCH-OUNCE.
3. MAKE-UP WASHERS ARE TO ADDED OR DELETED TO ACHIEVE REQUIRED ENDDPLAY.
4. OIL SLINGER MUST BE FLUSH WITH INSIDE EDGE OF EXTERNAL CAP.
5. LEAD RIP ON FASCO END MUST NOT EXTEND OUTSIDE OF MAIN FRAME.

FRONT END



BACK END



PACKING SPECIFICATIONS

1. PACK 1 PER CONTAINER, 45 CONTAINERS PER LAYER, 6 LAYERS PER PALLET, 270 MAX. PER PALLET. PER 88834200.
2. CARTON LABELS MUST FACE ONE DIRECTION, TOWARD THE OPEN END OF THE PALLET, PER 88834408.
3. CUT OFF EXCESS FLAT PAD.

DRAWING REVISION AA		REVISION BY MLS	DATE 3/21/2017	TOLERANCES UNLESS OTHERWISE SPECIFIED:		DRAWN BY MLS		REGAL™ Regal Beloit America, Inc.		
ECO ECO-0119917	APPROVED BY SED	DATE 3/21/2017	DEC.	INCH	mm	ANGLE	DATE 3/21/2017	DESCRIPTION MOTOR ASSY		
ECO DESCRIPTION REVISED CORSET MATERIAL PER CUST. REQUEST.			.X	±0.1	[±2.5]	±1°	APPROVED BY SED			
<small> COPYRIGHT REGAL BELOIT AMERICA, INC. ALL RIGHTS RESERVED. PROPRIETARY AND CONFIDENTIAL INFORMATION - THIS DOCUMENT IS THE PROPERTY OF REGAL BELOIT AMERICA, INC. FORMERLY AND CONTAINS OWNER'S PROPRIETARY INFORMATION. ANY PERSON, CORPORATION OR OTHER FIRM RECEIVING IT IS DEEMED, BY RECEIVING IT, TO AGREE THAT IT, AND/OR ANY PART OF IT, SHALL NOT BE DISCLOSED TO ANY PERSON, CORPORATION OR OTHER ENTITY, DUPLICATED, AND/OR USED, EXCEPT AS EXPRESSLY APPROVED IN WRITING IN ADVANCE BY OWNER. THIS DOCUMENT SHALL BE RETURNED TO OWNER UPON REQUEST. IT MAY BE SUBJECT TO CERTAIN RESTRICTIONS UNDER APPLICABLE EXPORT CONTROL LAWS AND REGULATIONS. </small>			.XXX	±0.005	[±0.127]		DATE 3/21/2017	MATERIAL		
			.XXXX	±0.0005	[±0.0127]		REFERENCE	PROCESS FINISH BLACK		
			REMOVE BURRS & BREAK SHARP EDGES: .003/.015 [0.076/.381] X 45° CORNER FILLETS: R.02 [S1]				THIRD ANGLE PROJECTION	SIZE C	DRAWING NUMBER 71731617	SHEET 2 OF 2
			MACHINED SURFACES: .125/3.2 INCH/mm				SHEET 2 OF 2			
			mm SHOWN IN [BRACKETS]				SHEET 2 OF 2			