

NOTES

1. THRU AIR SPACING BETWEEN WIRE AND METAL .094 MIN.
2. TIE BOLT TOLERANCE 7 - 12 IN. LBS.
3. FOR WASHER SET-UP, SEE CHART C600 0279, DETAIL "A".
4. SALES TO SPECIFY ON P.O. WHICH PACK TO USE.

ECO	REV.	DATE	SPEC/CHECK
640992	0	1-21-10	MKR/MKR

71x xxx,R

71x xxxC

71x xxxZ

A. SEE PACKAGING MANUAL PAGE 2 FOR PACKAGING PROCEDURES.

1 MOTOR/CARTON;
16 MOTORS/LAYER;
6 LAYERS/PALLET;
96 MOTORS/PALLET.

B. SEE DRAWING 8785 6079 SH. 1 FOR PALLET LAYOUT.

C. CENTER LABEL, 6120 7039, ON END OF CARTON.

D. PLACE PAMPHLET, 6122 4579, IN CARTON WITH MOTOR.

If Printed, this is an Uncontrolled Document

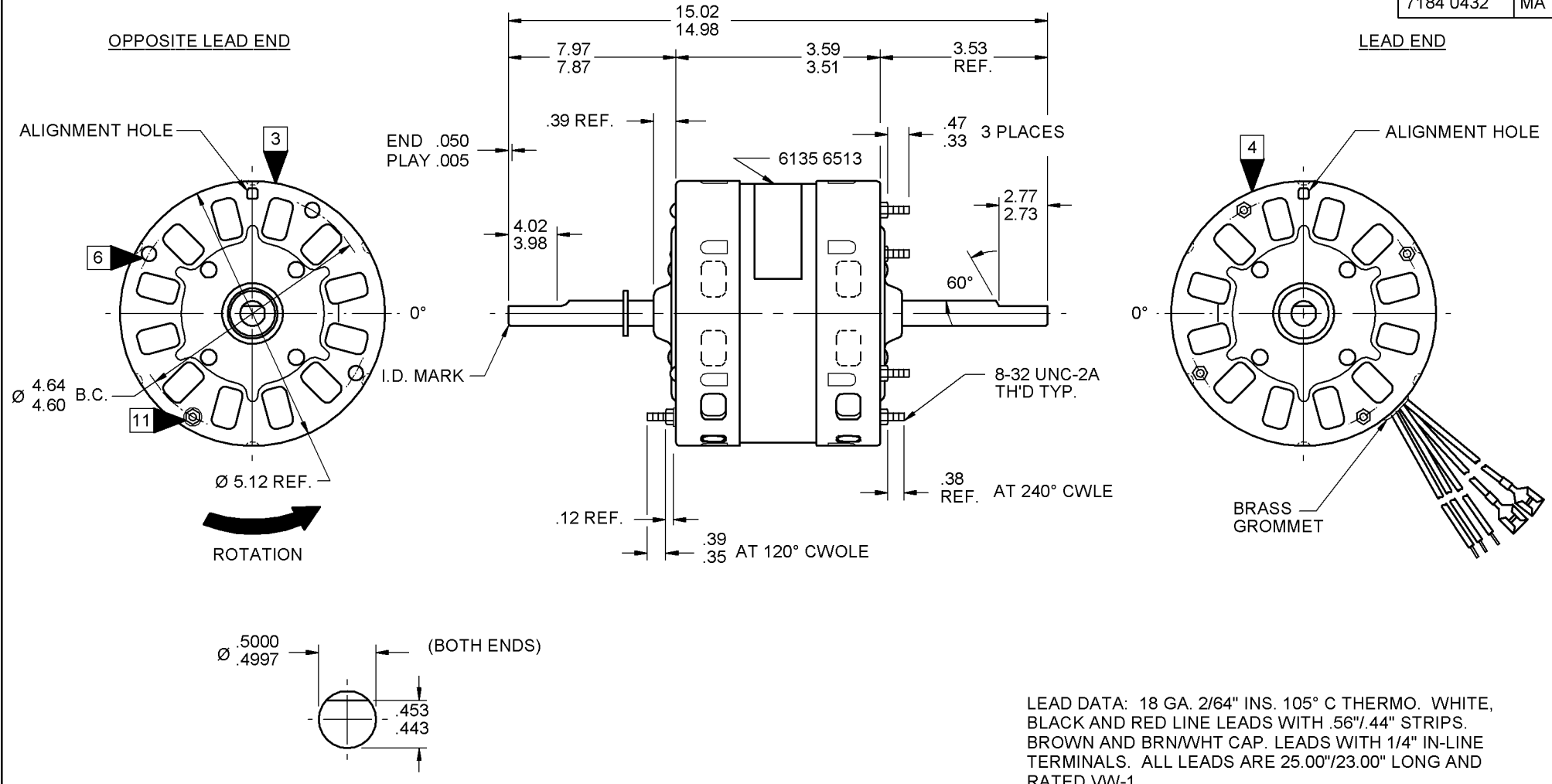
PRODUCTION TEST AT IDLE 115 VOLTS 60 HZ		MOTOR SPEED	PERFORMANCE TEST 115 VOLTS 60 HZ 1 PH 1/3 HP CAP. 7.5 MFD 370 VAC										
AMP	WATT		IDLE			LOADED				LOCKED			BREAK
1.80 — 1.46	139.0 — 115.0	HIGH	RPM	AMP	WATT	OZ/IN	RPM	AMP	WATT	OZ/IN	AMP	WATT	OZ/IN
.72 — .52	81.0 — 60.0	LOW	1791	1.64	129	209.5	1625	3.69	409	86.0	7.78	763	280.5
			1783	.63	71	132.0	1080*	3.76	385	48.0	4.46	431	142.7

HI-POT TEST 2000 VOLTS

BELOW BREAK *

MAX LEAKAGE CURRENT 5 mA

7184 0432 MA



7184 0432 = MADE IN U.S.A.
7184 0432R = ASSEMBLED IN MEXICO

SPECIAL INSTRUCTIONS: FLATS TO BE PARALLEL WITHIN ± 20°. SHAFT IS BONDERIZED. ROTOR IS RUSTPROOFED. ALL BOLTS TO HAVE LOCKING WINGS TO RESIST ROTATION. PAMPHLET PACKED WITH MOTOR.

MOTORS PACKED MAX. PER SKID: ___ PALLET PACK, 96 CARTON PACK, ___ TRAY PACK.

FASCO FASCO INDUSTRIES, INC. MOTOR DIVISION

V. 115 HZ 60 PH 1 40° C AMB AD ROT →

HP 1/3 AMP 3.4 INS CL B CAP 7.5 MFD 370 VAC

RPM 1675/1080 TYPE U184B1 NO. 7184-0432

DATE/BAR CODE AREA PER 8882 6003

MODEL D1092

6135 6513,R REV. 0

THERMALLY PROTECTED CONNECTION DIAGRAM

BRN — CAPACITOR

BRN/WHT —

WHITE — LINE

BLK-HI — LINE

RED-LO — LINE

SAFETY WARNING

THIS MOTOR MUST BE GROUNDED IN ACCORDANCE WITH LOCAL OR NATIONAL ELECTRICAL CODES TO PREVENT POSSIBLE INJURY DUE TO ELECTRICAL SHOCK

CUSTOMER: FASCO DISTRIBUTING CO.	PROPRIETARY: DO NOT DUPLICATE OR DISCLOSE TO THIRD PARTIES WITHOUT WRITTEN PERMISSION OF FASCO IND. INC., ELDON MO.
PART NUMBER: D1092	FASCO INDUSTRIES, INC. MOTOR DIVISION ELDON PLANT
APPLICATION: DIST. SALES	MOTOR TYPE P.S.C.
FINISH COLOR: GRAY	MOTOR NUMBER 7184 0432 R
MOTOR WEIGHT: 9.30 LBS.	REV. 0
ENVIRONMENT: WET	
INSULATION CLASS: B	

LOCATE Ⓞ OF NAMEPLATE ON Ⓞ OF STATOR TO READ RIGHT FROM LEAD END OF MOTOR CENTER AT 60° CWLE.

SIZE 4.00 X .75