

NOTES

1. STATOR LOCATION DIMENSION IS FROM SLEEVE EDGE (OPPOSITE LEAD END) TO STATOR STEEL 1.03/1.01.
2. STATOR STACK 1".
3. THRU AIR SPACING BETWEEN WIRE AND METAL .094 MIN.
4. TIE BOLT TORQUE TOLERANCE 13-17 IN. LBS.
5. FOR WASHER SET-UP, SEE CHART C600 0279, DETAIL "A".
6. ASSEMBLE SPACER, 8867 0153, BETWEEN CAPACITOR MOUNTING CLAMP AND END SHIELD.
7. LOCATE TOP LABEL, 6120 6085, AT 0°, AS SHOWN TO READ RIGHT FROM LEAD END OF MOTOR.
8. SALES TO SPECIFY ON P.O. WHICH PACK TO USE.

ECO	REV.	DATE	SPEC/CHECK
642634	7	12-5-11	MKR/MKR
635386	4	12-07-05	GAE/GAE
638330	5	06-26-08	GAE/GAE
639476	6	4-15-09	LDC/LDC

A. SEE PACKAGING MANUAL PAGE 2 FOR PACKAGING PROCEDURE.

1 MOTOR/CARTON;
8 MOTORS/LAYER;
6 LAYERS/PALLET;
48 MOTORS/PALLET.

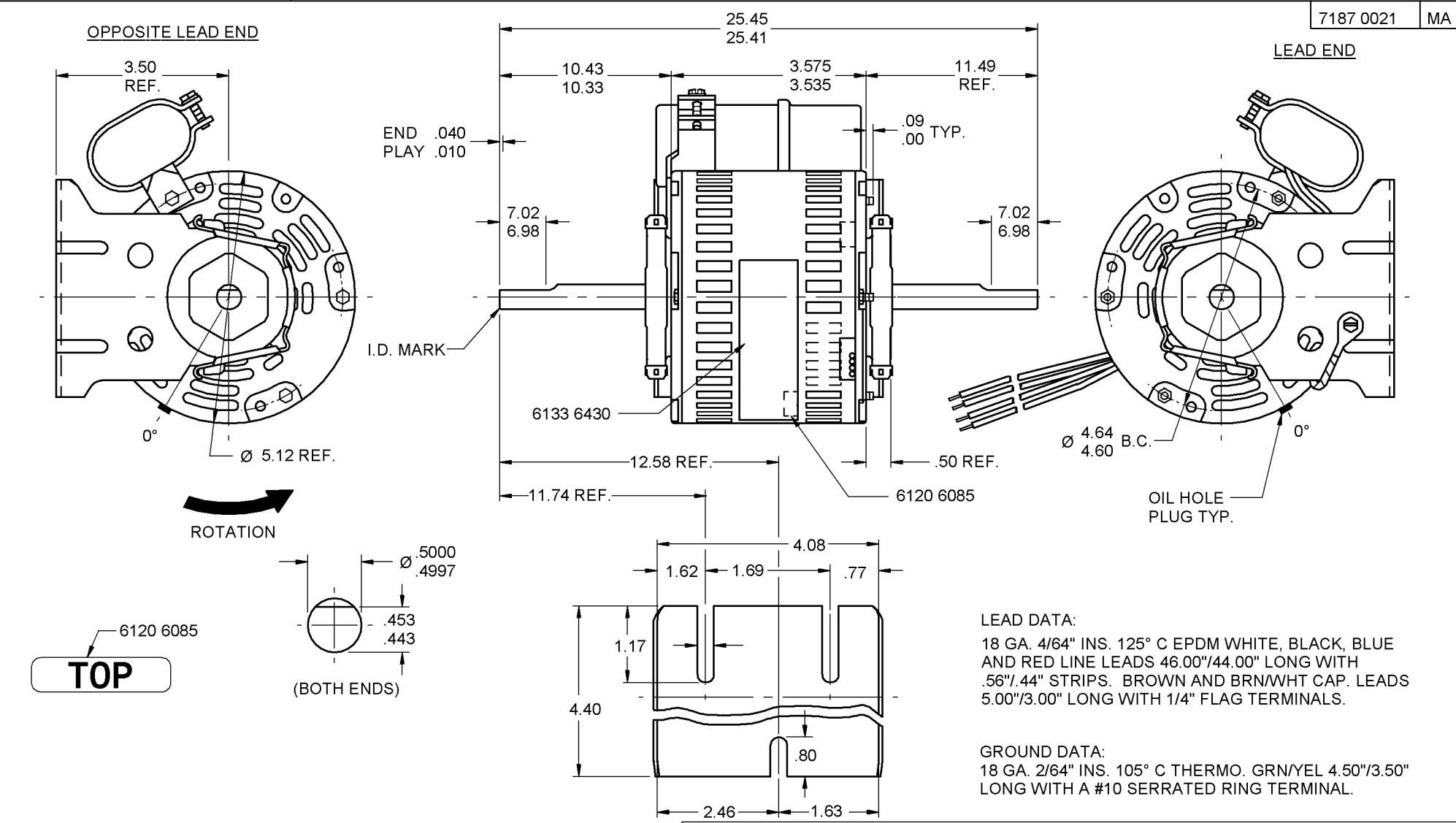
B. CENTER LABEL, 6120 6126, ON END OF CARTON.

C. PLACE PAMPHLET, 6122 4579, IN CARTON WITH MOTOR.



PRODUCTION TEST AT IDLE 115 VOLTS 60 HZ		MOTOR SPEED	PERFORMANCE TEST 115 VOLTS 60 HZ 1 PH 1/15 HP CAP. 5 MFD 370 VAC											
AMP	WATT		IDLE			LOADED				LOCKED			BREAK	
			RPM	AMP	WATT	OZ/IN	RPM	AMP	WATT	OZ/IN	AMP	WATT	OZ/IN	
.50	— .41	50.6 — 41.4	HIGH	1186	.45	46	47	1100	.70	77	27	1.33	143	64
.24	— .20	24.2 — 19.8	MED.	1177	.22	22	18	1100	.33	34	12	.66	63	26
.20	— .16	19.8 — 16.2	LOW	1169	.18	18	12	1100	.25	26	7	.52	48	18

HI-POT TEST 2000 VOLTS
MAX LEAKAGE CURRENT 5 mA



FASCO FASCO INDUSTRIES, INC. MOTOR DIVISION ASSEMBLED IN MEXICO

V. 115 HZ 60 PH 1 ROT →
HP 1/15 INS CL B CAP 5 MFD 370 VAC
AMP .80 40°C AMB NO. 7187-0021
RPM 1100 (3 SPD) AO TYPE U187B1

MODEL D1090

THERMALLY PROTECTED CONNECTION DIAGRAM

BRN — BRN/WHT — CAPACITOR
WH — LINE
BLK-HI — LINE
BLU-MED — LINE
RED-LO — LINE

SAFETY WARNING
THIS MOTOR MUST BE GROUNDED IN ACCORDANCE WITH LOCAL OR NATIONAL ELECTRICAL CODES TO PREVENT POSSIBLE INJURY DUE TO ELECTRICAL SHOCK

DATE/BAR CODE AREA PER 8882 6003

6133 6430,R REV. 3

SPECIAL INSTRUCTIONS: SHAFT IS BONDERIZED AND OIL WIPED. FLATS TO BE PARALLEL WITHIN ±20°. ROTATE MOTOR 120° CCWLE IN BASE, AS SHOWN.

PAMPHLET PACKED WITH MOTOR.

MOTORS PACKED MAX. PER SKID: _____ PALLET PACK, 48 CARTON PACK.

CUSTOMER: FASCO DISTRIBUTING CO.

PART NUMBER: D1090

APPLICATION: DIST. SALES
FINISH COLOR: GRAY
MOTOR WEIGHT: 10.25 LBS.
ENVIRONMENT: DRY
INSULATION CLASS: B

MOTOR TYPE P.S.C.

MOTOR NUMBER 7187 0021
REV. 7

B	LA	FR	A	S	C	E	B	A
00	87	32	V	04	AA	7	8	0