

NOTES:

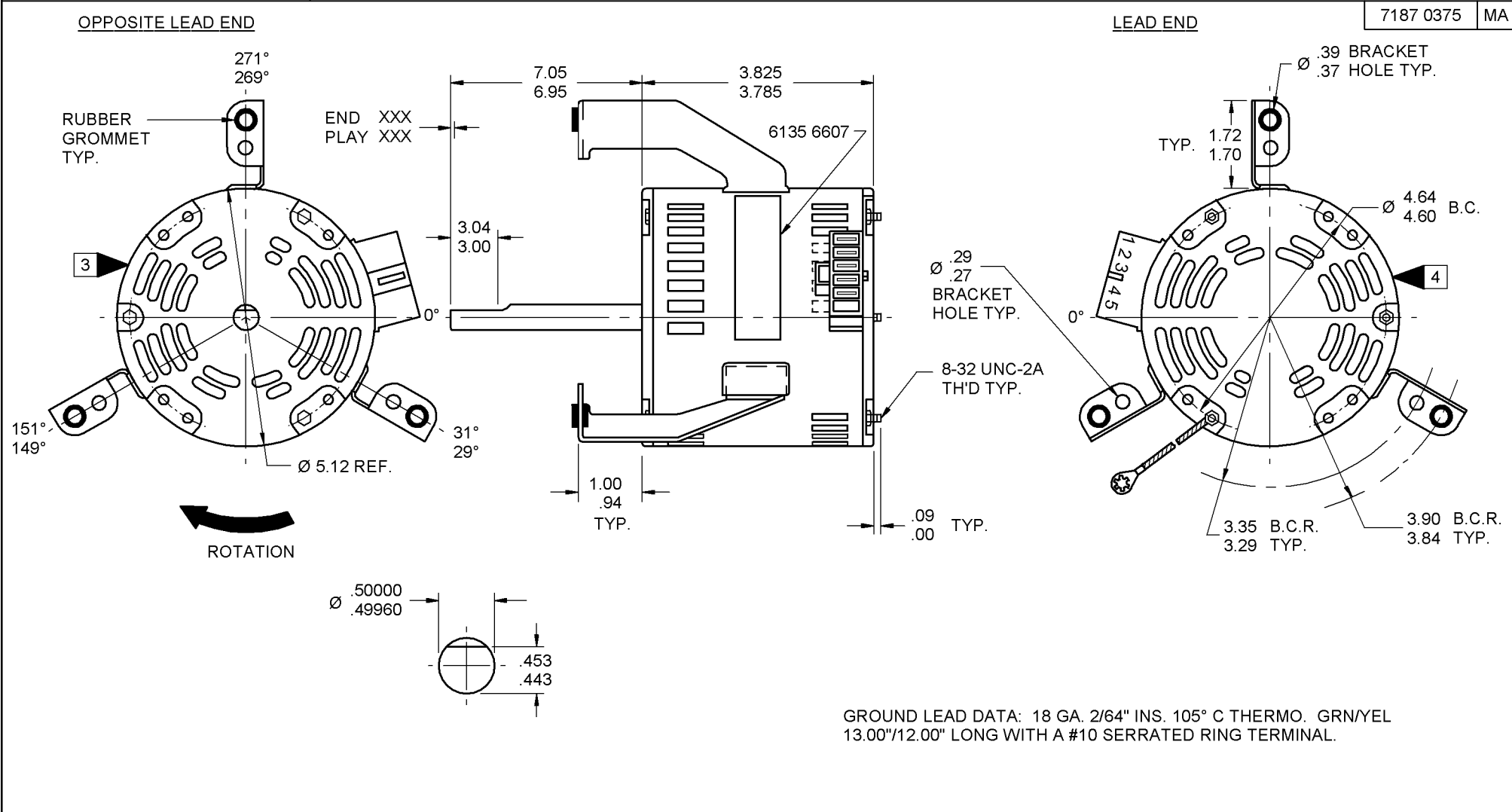
1. STATOR LOCATION DIMENSION IS FROM SLEEVE EDGE (OPPOSITE LEAD END) TO STATOR STEEL 1.04/1.02.
2. STATOR STACK 1 1/4".
3. THRU AIR SPACING BETWEEN WIRE AND METAL .094 MIN.
4. TIE BOLT TORQUE TOLERANCE 13 - 17 IN. LBS.
5. PRESS STATOR SO THAT MODULAR CONNECTOR LEADS EXIT 65° CCWLE FROM LEAD NOTCH IN SLEEVE AND WELD SEAM IS LINED UP APPROXIMATELY AS SHOWN.
6. TWIST THE MODULAR CONNECTOR PRIOR TO INSERTING INTO THE LEAD NOTCH WITH LABELED SIDE TOWARD LEAD END END SHIELD AND PLACE EXCESS LEAD MATERIAL BETWEEN COILS AND SLEEVE. THE TWISTED BUNDLE WILL GATHER LEADS TOGETHER LOOSELY AND HELP KEEP THE LEADS OUT OF THE STATOR I.D.
7. SALES TO SPECIFY ON P.O. WHICH PACK TO USE.
8. ASSEMBLE SPRING, 0051 1620, IN OPP. L.E. END SHIELD. ASSEMBLE BEARING SPACER, 0006 1226, IN OPPOSITE END SHIELD.

ECO	REV.	DATE	SPEC/CHECK
642452	0	9-30-11	NJP/NJP
A. SEE PACKAGING MANUAL PAGE 19 FOR PACKAGING PROCEDURES. 1 MOTOR/CARTON; 16 MOTORS/LAYER; 2 LAYERS/PALLET; 32 MOTORS/PALLET. B. SEE DRAWING 8785 6079 SH. 1 FOR PALLET LAYOUT. C. CENTER LABEL, 6120 7073, ON END OF CARTON. D. PLACE PAMPHLET, 6122 4579, IN CARTON WITH MOTOR. E. PLACE 3 EYELETS, 8654 6004, IN COIN ENVELOPE, 9782 4000, AND PACK IN CARTON WITH MOTOR.			
71xx xxxx,R			
71xx xxxxC			
71xx xxxxZ			

If Printed, this is an Uncontrolled Document.

PRODUCTION TEST AT IDLE 115 VOLTS 60 HZ		MOTOR SPEED	PERFORMANCE TEST 115 VOLTS 60 HZ 1 PH 1/20 HP CAP. 7.5 MFD 370 VAC										
AMP	WATT		IDLE			LOADED				LOCKED			BREAK
			RPM	AMP	WATT	OZ/IN	RPM	AMP	WATT	OZ/IN	AMP	WATT	OZ/IN
.66 — .54	70.4 — 57.6	HIGH	1188	.6	64	74.0	1075	1.0	113	47.0	1.9	204	100.0
.33 — .27	35.2 — 28.8	MED.	1183	.3	32	32.0	1075	.5	52	20.0	.9	92	43.0
.22 — .18	25.3 — 20.7	LOW	1177	.2	23	19.0	1075	.3	32	11.0	.6	56	25.0

HI-POT TEST 2000 VOLTS
MAX LEAKAGE CURRENT 5 mA



GROUND LEAD DATA: 18 GA. 2/64" INS. 105° C THERMO. GRN/YEL 13.00"/12.00" LONG WITH A #10 SERRATED RING TERMINAL.

FASCO FASCO INDUSTRIES, INC. MOTOR DIVISION ASSEMBLED IN MEXICO

THERMALLY PROTECTED CONNECTION DIAGRAM

V. 115 HZ 60 PH 1 INS CL B ROT ←
 HP 1/20 AO CAP 7.5 MFD 370 VAC
 AMP 1.25 40°C AMB TYPE U187B1 NO. 7187-0375
 RPM 1075 (3 SPD) SHIELDED BALL BEARING

SAFETY WARNING: THIS MOTOR MUST BE GROUNDED IN ACCORDANCE WITH LOCAL OR NATIONAL ELECTRICAL CODES TO PREVENT POSSIBLE INJURY DUE TO ELECTRICAL SHOCK.

MODEL D1074 DATE/BAR CODE AREA PER 8882 6003

SPECIAL INSTRUCTIONS: SHAFT IS BONDERIZED. ROTOR IS RUSTPROOFED. EYELETS PACKED IN CARTON WITH MOTOR. PAMPHLET PACKED WITH MOTOR.			
MOTORS PACKED MAX. PER SKID: ___ PALLET PACK, 32 CARTON PACK, ___ TRAY PACK.			
CUSTOMER: FASCO DISTRIBUTING CO.		PROPRIETARY: DO NOT DUPLICATE OR DISCLOSE TO THIRD PARTIES WITHOUT WRITTEN PERMISSION OF FASCO IND. INC., ELDON MO.	
PART NUMBER: D1074		FASCO INDUSTRIES, INC. MOTOR DIVISION ELDON PLANT	
APPLICATION: DIST. SALES	MOTOR TYPE	MOTOR NUMBER	REV.
FINISH COLOR: GRAY	P.S.C.	7187 0375	0
MOTOR WEIGHT: LBS.	B LA FR A S C E B A		
ENVIRONMENT: WET	00 87 33 V 05 AK 7 0 0		
INSULATION CLASS: B			

LOCATE ϕ OF NAMEPLATE ON ϕ OF SLEEVE TO READ RIGHT FROM LEAD END OF MOTOR CENTER AT 30° CWLE.
 SIZE 3.50 X 1.00

8869 6585 1