

NOTES:

1. THRU AIR SPACING BETWEEN WIRE AND METAL .10 MIN.
2. TIE BOLT TORQUE TOLERANCE 10 - 15 IN. LBS.
3. FOR WASHER SET-UP, SEE CHART C600 0279, DETAIL "H".
4. ROTOR FREENESS TO BE WITHIN 3/4 OZ. IN. TORQUE
5. SALES TO SPECIFY ON P.O. WHICH PACK TO USE.
6. WARNING LABEL, 61294832 TO READ RIGHT FROM LEAD END OF MOTOR.

ECO	REV.	DATE	SPEC/CHECK
632753	6	3-31-04	JAK/RWS
639328	7	3-31-09	MKR/MKR
C438949	08	05-20-10	KSA/PLA
4004440	09	2/08/2012	BGP/SDM

- 71x xxxx,M
- SEE PACKAGING MANUAL PAGE 2 FOR PACKAGING PROCEDURES.
 - 1 MOTOR/CARTON;
 - 32 MOTORS/LAYER;
 - 6 LAYERS/PALLET;
 - 192 MOTORS/PALLET.
 - SEE DRAWING 8785 6079 SH. 1 FOR PALLET LAYOUT.
 - CENTER LABEL, 6122 9071, ON END OF CARTON.
 - PLACE 2 SHAFT BUSHINGS, 0006 3274, IN CARTON WITH MOTOR.
 - PLACE PAMPHLET, 6122 4579 IN CARTON WITH MOTOR.
 - CARTON LABELS MUST ALL FACE ONE DIRECTION TOWARD THE OPEN END OF THE PALLET. SEE P.S. 8883 4408.
 - NO PACKAGING TAPE OVER CARTON LABELS.

71x xxxx,C

If Printed, this is an Uncontrolled Document

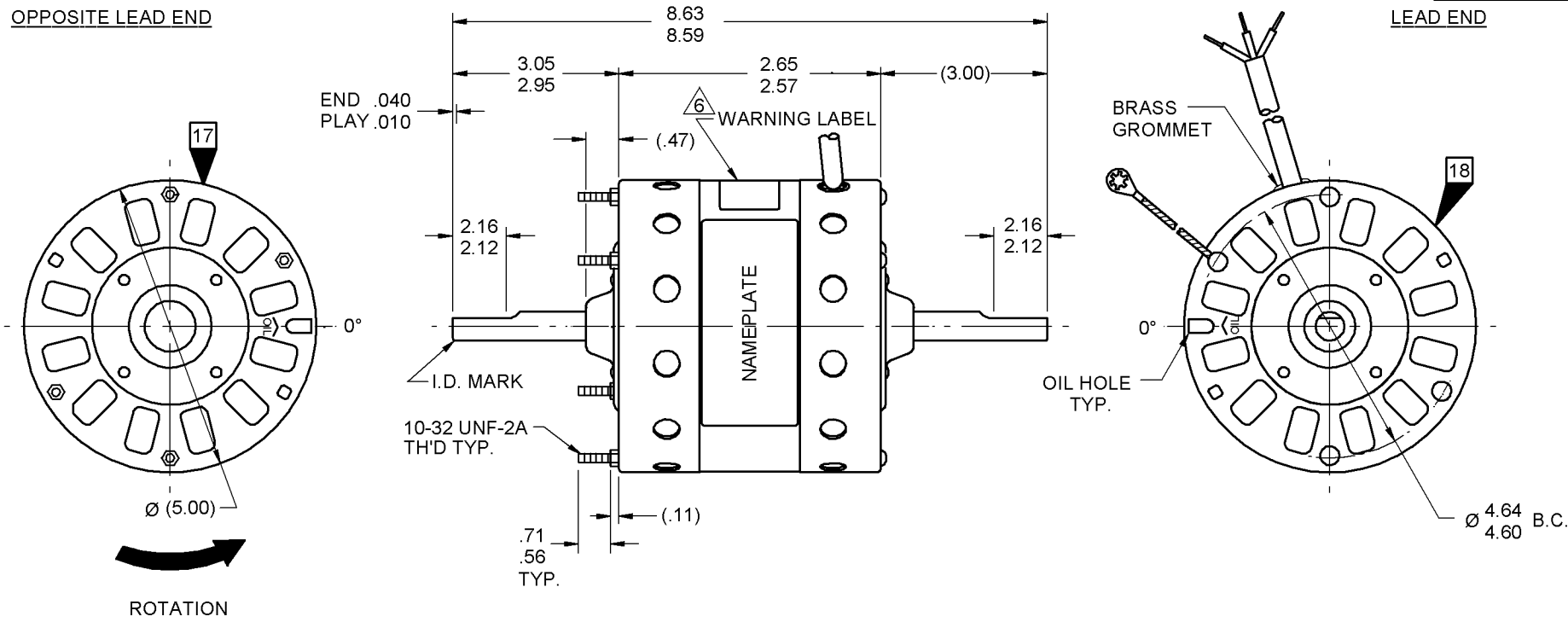
PRODUCTION TEST AT IDLE 115 VOLTS 60 HZ		MOTOR SPEED	PERFORMANCE TEST 115 VOLTS 60 HZ 1 PH 1/10 HP										
AMP	WATT		IDLE			LOADED				LOCKED			BREAK
			RPM	AMP	WATT	OZ/IN	RPM	AMP	WATT	OZ/IN	AMP	WATT	OZ/IN
3.19 — 2.61	189.2 — 154.8	HIGH	1173	2.9	172	96	1040	3.2	238	36	4.3	300	110
1.98 — 1.62	122.1 — 99.9	LOW	1174	1.8	111	68	1020	2.1	158	25	2.7	187	73

HI-POT TEST 2000 VOLTS
MAX LEAKAGE CURRENT 5 mA

7151 3407 MA

OPPOSITE LEAD END

LEAD END



LEAD DATA: 18 GA., 2/64 INSUL., 105° C, PVC, SJT, BLACK JACKETED, 3-COND., (1) WHITE, (1) BLACK, (1) RED, 23.00/21.00 IN. LONG WITH 2.25/1.75 IN. SPLIT LENGTH AND .36/.24 IN. STRIP LENGTH

GROUND DATA: 18 GA. 2/64 INSUL. 105°C, THERMO., GRN/YEL, 7.00/6.00 IN. LONG WITH A NO. 10 SERRATED RING TERMINAL, 89020157, AMP NO. 350436-2

6129-4832

SAFETY WARNING
This Motor Must Be Grounded In Accordance With Local Or National Electrical Codes To Prevent Possible Injury Due To Electrical Shock

0046 4072

0046 4551

FASCO Motor Division
Assembled In Mexico
No. 71513407 TYPE U51 AO Ph 1
115 V 60 Hz
3.5 A 1040 RPM 1/10 - 1/15 HP
Model D1069 CWLE
Thermally Protected

Connection Diagram
White - Line
Black-HI - Line
Red-LO - Line

61299553

LOCATE ϕ OF NAMPLATE ON ϕ OF STATOR TO READ RIGHT FROM LEAD END OF MOTOR CENTER AT 0°.

SPECIAL INSTRUCTIONS: SHAFT IS BONDERIZED. SHAFT BUSHINGS PACKED WITH MOTOR. FLATS TO BE PARALLEL WITHIN $\pm 20^\circ$. PAMPHLET PACKED WITH MOTOR.

MOTORS PACKED MAX. PER SKID: ___ PALLET PACK, 192 CARTON PACK.	
CUSTOMER: FASCO DISTRIBUTING CO. PART NUMBER: D1069	PROPRIETARY: DO NOT DUPLICATE OR DISCLOSE TO THIRD PARTIES WITHOUT WRITTEN PERMISSION OF FASCO IND. INC., ELDON MO. FASCO INDUSTRIES, INC. MOTOR DIVISION ELDON PLANT
APPLICATION DIST. SALES FINISH COLOR: GRAY MOTOR WEIGHT: 6 LBS. ENVIRONMENT: DRY INSULATION CLASS: A	MOTOR TYPE SHADED POLE MOTOR NUMBER 7151 3407M REV. 09
	B LA FR A S C E B A 00 51 10 V 03 HR 6 5 0