

NOTES

1. THRU AIR SPACING BETWEEN WIRE AND METAL .094 MIN.
2. TIE BOLT TORQUE TOLERANCE 7-12 IN. LBS.
3. FOR WASHER SET-UP, SEE CHART C600 0279, DETAIL "H".
4. SALES TO SPECIFY ON P.O. WHICH PACK TO USE.

ECO	REV.	DATE	SPEC/CHECK
621069	1	5-14-98	MKR/RWS
632590	2	3-3-04	MKR/MKR
638788	3	11-10-08	MKR/MKR
640594	4	10-6-09	MKR/MKR

71xx xxx,R

A. SEE PACKAGING MANUAL PAGE 2 FOR PACKAGING PROCEDURES.

1 MOTOR/CARTON;
32 MOTORS/LAYER;
6 LAYERS/PALLET;
192 MOTORS/PALLET.

B. SEE DRAWING 8785 6079 SH. 1 FOR PALLET LAYOUT.

C. CENTER LABEL, 6119 6455, ON END OF CARTON.

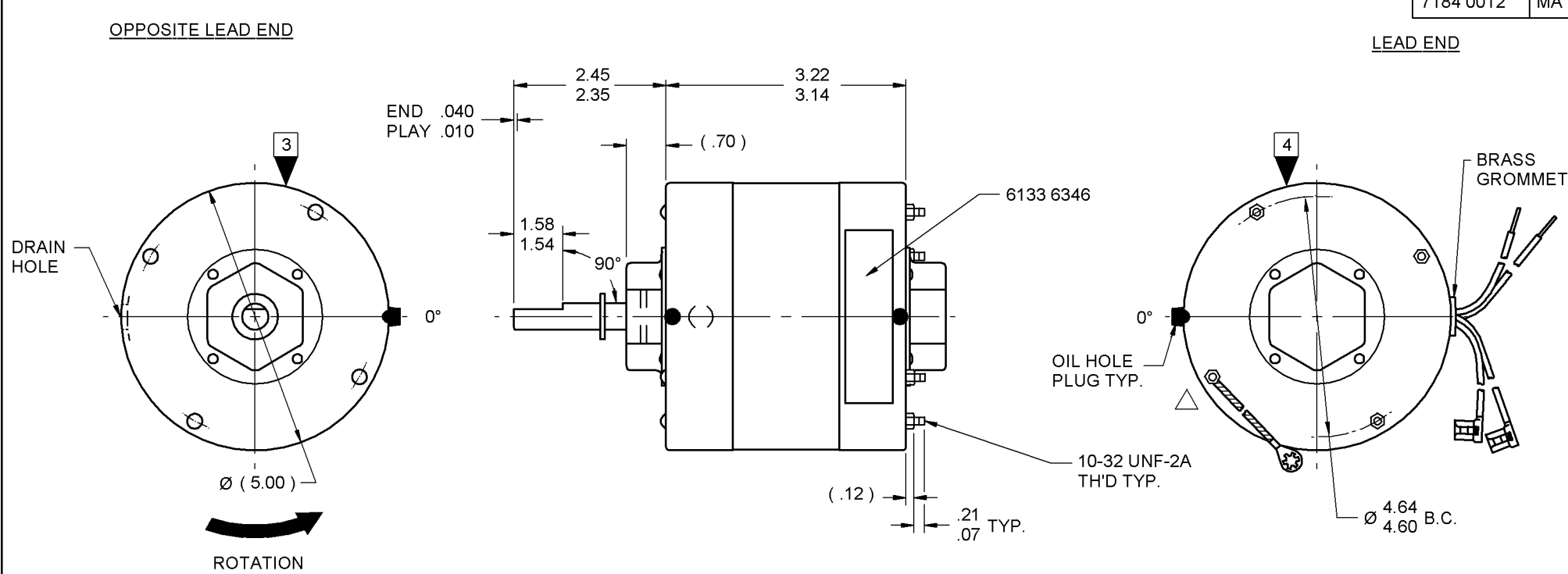
D. PLACE PAMPHLET, 6122 4579, IN CARTON WITH MOTOR.

71xx xxx,C

PRODUCTION TEST AT IDLE 277 VOLTS 60 HZ		MOTOR SPEED	PERFORMANCE TEST 277 VOLTS 60 HZ 1 PH 1/6 HP CAP. 4 MFD 370 VAC										
AMP	WATT		IDLE			LOADED				LOCKED			BREAK
			RPM	AMP	WATT	OZ/IN	RPM	AMP	WATT	OZ/IN	AMP	WATT	OZ/IN
.35 — .29	78.1 — 63.9	HIGH	1787	.32	71	97.0	1600	.68	186	42.0	1.16	314	116.0

HI-POT TEST 2000 VOLTS
MAX LEAKAGE CURRENT 5 mA

7184 0012 MA



LEAD DATA: 18 GA. 4/64" 105° C THERMO. WHITE AND BLACK LINE LEADS 40.00"/38.00" LONG WITH .56"/.44" STRIPS. BROWN AND BRN/WHT CAP. LEADS 13.00"/11.00" LONG WITH 1/4" FLAG TERMINALS.

GROUND DATA: 18 GA. 2/64" INS. 105° C THERMO. GRN/YEL, 13.00"/12.00" LONG WITH A #10 SERRATED RING TERMINAL.

7184 0012 = MADE IN U.S.A.
7184 0012R = ASSEMBLED IN MEXICO

FASCO FASCO INDUSTRIES, INC. MOTOR DIVISION

MODEL D1065

DATE/BAR CODE AREA PER 8882 6003

6133 6346,R REV. 3

THIS MOTOR MUST BE GROUNDED IN ACCORDANCE WITH LOCAL OR NATIONAL ELECTRICAL CODES TO PREVENT POSSIBLE INJURY DUE TO ELECTRICAL SHOCK

SPECIAL INSTRUCTIONS: SHAFT IS BONDERIZED. ROTOR IS RUSTPROOFED.											
△ ASSEMBLE GROUND STRAP AS SHOWN. PAMPHLET PACKED WITH MOTOR.											
MOTORS PACKED MAX. PER SKID: <u> </u> PALLET PACK, 192 CARTON PACK.											
CUSTOMER: FASCO DISTRIBUTING CO.						PROPRIETARY: DO NOT DUPLICATE OR DISCLOSE TO THIRD PARTIES WITHOUT WRITTEN PERMISSION OF FASCO IND. INC., ELDON MO.					
PART NUMBER: D1065						FASCO INDUSTRIES, INC. MOTOR DIVISION ELDON PLANT					
APPLICATION: DIST. SALES				MOTOR TYPE				MOTOR NUMBER		REV.	
FINISH COLOR: GRAY				P.S.C.				7184 0012		4	
MOTOR WEIGHT: 7.50 LBS.				B LA FR A S C E B A				R			
ENVIRONMENT: WET				00 84 10 T 19 AB 5 8 0							
INSULATION CLASS: B											

LOCATE NAMEPLATE .10 FROM FACE OF LEAD END COVER TO READ RIGHT FROM LEAD END OF MOTOR CENTER AT 0°.

SIZE 3.50 X 1.00