

NOTES:

1. STATOR LOCATION DIMENSION IS FROM SLEEVE EDGE (OPPOSITE LEAD END) TO STATOR STEEL 1.03/1.01.
2. STATOR STACK 3/4".
3. THRU AIR SPACING BETWEEN WIRE AND METAL .094 MIN.
4. TIE BOLT TORQUE TOLERANCE 13 - 17 IN. LBS.
5. FOR WASHER SET-UP, SEE CHART C600 0279, DETAIL "A".
6. PRESS STATOR SO THAT MODULAR CONNECTOR LEADS EXIT 65° CCWLE FROM LEAD NOTCH IN SLEEVE AND WELD SEAM IS LINED UP APPROXIMATELY AS SHOWN.
7. TWIST THE MODULAR CONNECTOR PRIOR TO INSERTING INTO THE LEAD NOTCH WITH LABELED SIDE TOWARD LEAD END END SHIELD AND PLACE EXCESS LEAD MATERIAL BETWEEN COILS AND SLEEVE. THE TWISTED BUNDLE WILL GATHER LEADS TOGETHER LOOSELY AND HELP KEEP THE LEADS OUT OF THE STATOR I.D.
8. SALES TO SPECIFY ON P.O. WHICH PACK TO USE.

ECO	REV.	DATE	SPEC/CHECK
632776	0	4-1-04	LDC/LDC
634814	1	6-30-05	MKR/MKR
638858	2	11-21-08	MKR/MKR
641464	3	8-23-10	MKR/MKR

A. SEE PACKAGING MANUAL PAGE 19 FOR PACKAGING PROCEDURES.

1 MOTOR/CARTON;  
16 MOTORS/LAYER;  
2 LAYERS/PALLET;  
32 MOTORS/PALLET.

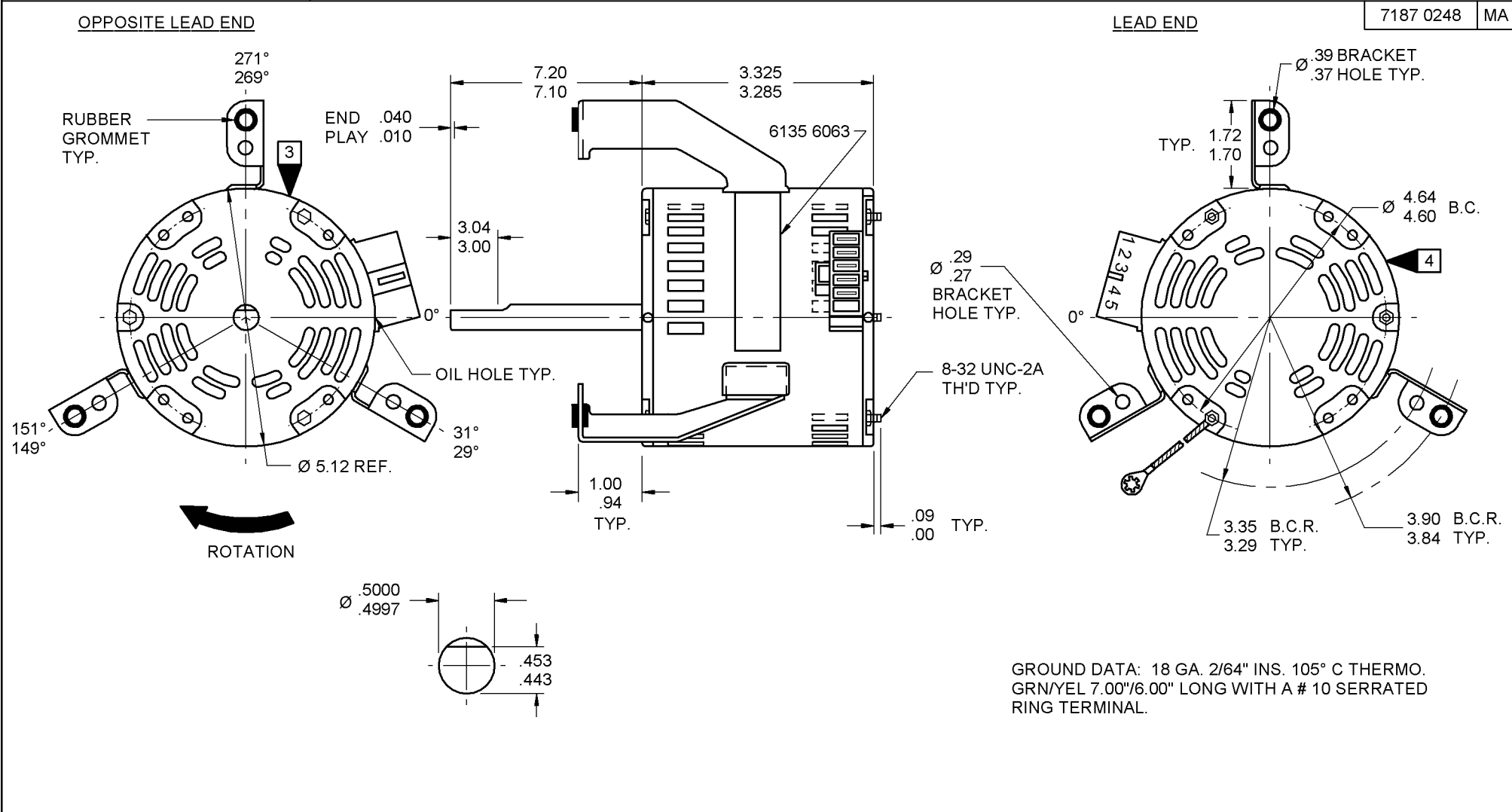
B. SEE DRAWING 8785 6079 SH. 1 FOR PALLET LAYOUT.  
C. CENTER LABEL, 6120 6636, ON END OF CARTON.  
D. PLACE 3 EYELETS, 8654 6004, INTO COIN ENVELOPE, 9782 4000. PLACE INTO CARTON WITH MOTOR.  
E. PLACE PAMPHLET, 6122 4579, IN CARTON WITH MOTOR.

71xx xxxx,R  
71xx xxxxC  
71xx xxxxZ

If Printed, this is an Uncontrolled Document.

PRODUCTION TEST AT IDLE 265 VOLTS 60 HZ		MOTOR SPEED	PERFORMANCE TEST 265 VOLTS 60 HZ 1 PH 1/30 HP CAP. 3 MFD 370 VAC										
AMP	WATT		IDLE				LOADED				LOCKED		
			RPM	AMP	WATT	OZ/IN	RPM	AMP	WATT	OZ/IN	AMP	WATT	OZ/IN
.26	.22	HIGH	1182	.24	62	39.0	1075	.35	92	25.0	.65	172	60.0
.15	.13	MED.	1175	.14	34	22.0	1075	.20	53	13.0	.41	106	37.0
.10	.08	LOW	1170	.09	22	13.0	1075	.14	35	7.0	.28	69	23.0

HI-POT TEST 2000 VOLTS  
MAX LEAKAGE CURRENT 5 mA



GROUND DATA: 18 GA. 2/64" INS. 105° C THERMO. GRN/YEL 7.00"/6.00" LONG WITH A # 10 SERRATED RING TERMINAL.

7187 0248 = MADE IN U.S.A.  
7187 0248R = ASSEMBLED IN MEXICO

**FASCO** FASCO INDUSTRIES, INC. MOTOR DIVISION

V. 265 HZ 60 PH 1 AO NO. 7187-0248 INS CL B ROT  
HP 1/30 AMP .38 RPM 1075 (3 SPD) TYPE U187B1  
CAP 3 MFD 370 VAC 40° C AMB THERMALLY PROTECTED

DATE/BAR CODE AREA PER 8882 6003 MODEL D1053

6135 6063,R REV. 1

**SAFETY WARNING**  
THIS MOTOR MUST BE GROUNDED IN ACCORDANCE WITH LOCAL OR NATIONAL ELECTRICAL CODES TO PREVENT POSSIBLE INJURY DUE TO ELECTRICAL SHOCK

CONNECTION DIAGRAM  
2 ——— CAPACITOR LINE  
1 ——— LINE  
3 - HI - -  
4 - MED - -  
5 - LO - -

LOCATE  $\phi$  OF NAMEPLATE ON  $\phi$  OF SLEEVE TO READ RIGHT FROM LEAD END OF MOTOR CARTON AT 30° CWLE.  
SIZE 4.00 X .75

SPECIAL INSTRUCTIONS: SHAFT IS BONDERIZED. ROTOR IS RUSTPROOFED.  
EYELETS PACKED WITH MOTOR. PAMPHLET PACKED WITH MOTOR.

MOTORS PACKED MAX. PER SKID: \_\_\_ PALLET PACK, 32 CARTON PACK, \_\_\_ TRAY PACK.

CUSTOMER: FASCO DISTRIBUTING CO. PROPRIETARY: DO NOT DUPLICATE OR DISCLOSE TO THIRD PARTIES WITHOUT WRITTEN PERMISSION OF FASCO IND. INC., ELDON MO.

PART NUMBER: D1053

APPLICATION: DIST. SALES MOTOR TYPE P.S.C. MOTOR NUMBER 7187 0248 REV. 3

FINISH COLOR: GRAY

MOTOR WEIGHT: 6.38 LBS.

ENVIRONMENT: WET

INSULATION CLASS: B

B	LA	FR	A	S	C	E	B	A
00	87	33	V	12	BR	7	7	0