

NOTES:

1. STATOR LOCATION DIMENSION IS FROM SLEEVE EDGE (OPPOSITE LEAD END) TO STATOR STEEL 1.03/1.01.
2. STATOR STACK 1 1/4".
3. THRU AIR SPACING BETWEEN WIRE AND METAL .094 MIN.
4. TIE BOLT TORQUE TOLERANCE 13 - 17 IN. LBS.
5. FOR WASHER SET-UP, SEE CHART C600 0279, DETAIL "A".
6. PRESS STATOR SO THAT MODULAR CONNECTOR LEADS EXIT 65° CCWLE FROM LEAD NOTCH IN SLEEVE AND WELD SEAM IS LINED UP APPROXIMATELY AS SHOWN.
7. TWIST THE MODULAR CONNECTOR PRIOR TO INSERTING INTO THE LEAD NOTCH WITH LABELED SIDE TOWARD LEAD END END SHIELD AND PLACE EXCESS LEAD MATERIAL BETWEEN COILS AND SLEEVE. THE TWISTED BUNDLE WILL GATHER LEADS TOGETHER LOOSELY AND HELP KEEP THE LEADS OUT OF THE STATOR I.D.
8. SALES TO SPECIFY ON P.O. WHICH PACK TO USE.

ECO	REV.	DATE	SPEC/CHECK
632778	0	4-1-04	LDC/LDC
638854	1	11-20-08	MKR/MKR
639880	2	6-8-09	LDC/LDC

A. SEE PACKAGING MANUAL PAGE 19 FOR PACKAGING PROCEDURES.

1 MOTOR/CARTON;
16 MOTORS/LAYER;
2 LAYERS/PALLET;
32 MOTORS/PALLET.

B. SEE DRAWING 8785 6079 SH. 1 FOR PALLET LAYOUT.

C. CENTER LABEL, 6120 6638, ON END OF CARTON.

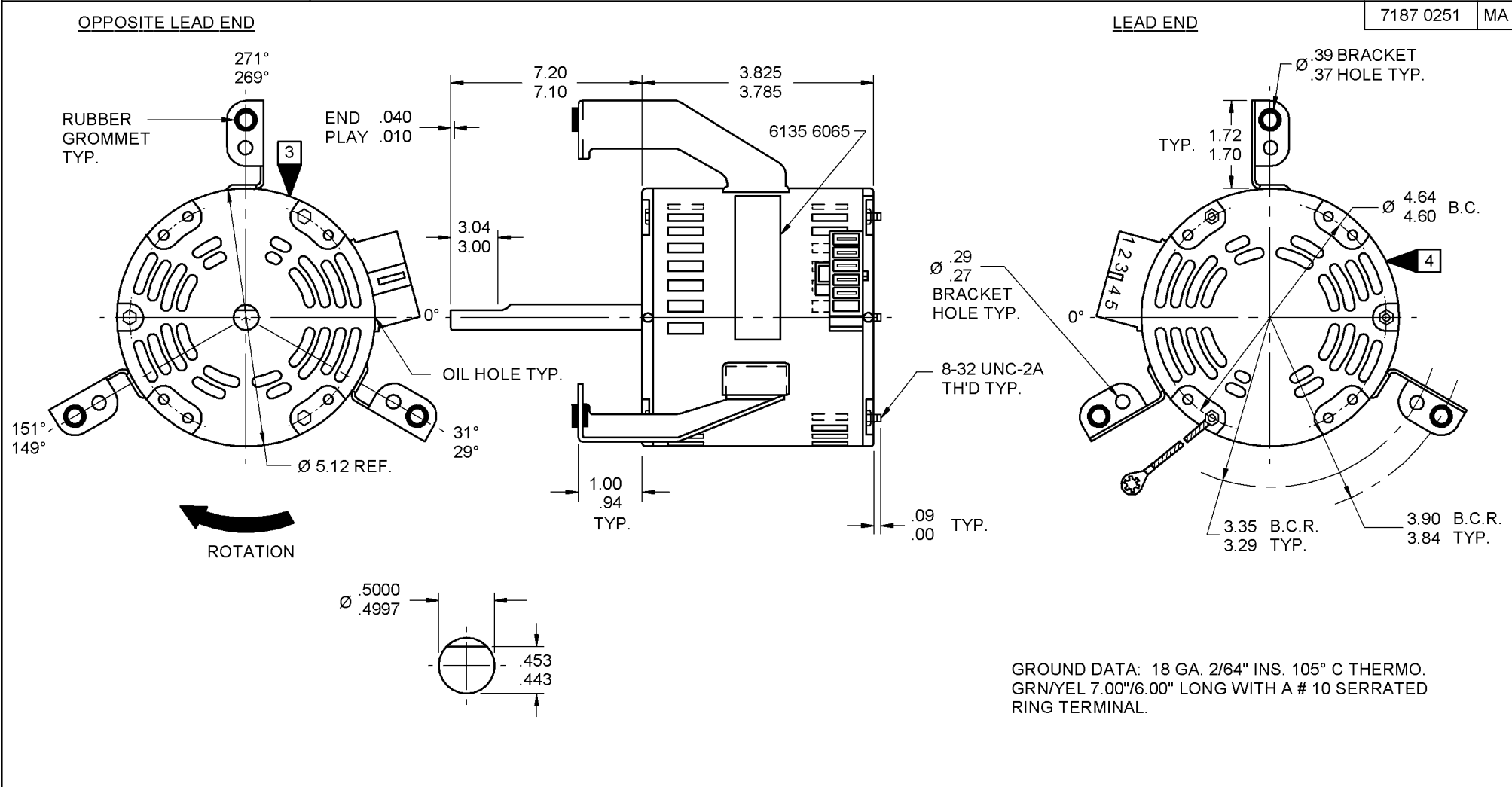
D. PLACE 3 EYELETS, 8654 6004, INTO COIN ENVELOPE, 9782 4000. PLACE INTO CARTON WITH MOTOR.

E. PLACE PAMPHLET, 6122 4579, IN CARTON WITH MOTOR.

If Printed, this is an Uncontrolled Document.

PRODUCTION TEST AT IDLE 230 VOLTS 60 HZ		MOTOR SPEED	PERFORMANCE TEST 230 VOLTS 60 HZ 1 PH 1/20 HP CAP. 5 MFD 370 VAC										
AMP	WATT		IDLE			LOADED				LOCKED			BREAK
			RPM	AMP	WATT	OZ/IN	RPM	AMP	WATT	OZ/IN	AMP	WATT	OZ/IN
.50	.41	HIGH	1187	.45	92	82.0	1075	.61	136	55.0	.91	209	104.0
.23	.19	MED.	1183	.21	46	30.0	1075	.26	60	21.0	.41	92	42.0
.14	.12	LOW	1174	.13	29	13.0	1075	.15	34	13.0	.23	49	20.0

HI-POT TEST 2000 VOLTS
MAX LEAKAGE CURRENT 5 mA



GROUND DATA: 18 GA. 2/64" INS. 105° C THERMO. GRN/YEL 7.00"/6.00" LONG WITH A # 10 SERRATED RING TERMINAL.

7187 0251 = MADE IN U.S.A.
7187 0251R = ASSEMBLED IN MEXICO

FASCO FASCO INDUSTRIES, INC. MOTOR DIVISION

V. 208-230 HZ 60 PH 1 INS CL B ROT
HP 1/20 AO CAP 5 MFD 370 VAC
AMP 1.6 40° C AMB NO. 7187-0251
RPM 1075 (3 SPD) TYPE U187B1

MODEL D1047

DATE/BAR CODE AREA PER 8882 6003

SAFETY WARNING
THIS MOTOR MUST BE GROUNDED IN ACCORDANCE WITH LOCAL OR NATIONAL ELECTRICAL CODES TO PREVENT POSSIBLE INJURY DUE TO ELECTRICAL SHOCK

SPECIAL INSTRUCTIONS: SHAFT IS BONDERIZED. ROTOR IS RUSTPROOFED. EYELETS PACKED WITH MOTOR. PAMPHLET PACKED WITH MOTOR.	
MOTORS PACKED MAX. PER SKID: ___ PALLET PACK, 32 CARTON PACK, ___ TRAY PACK.	
CUSTOMER: FASCO DISTRIBUTING CO.	PROPRIETARY: DO NOT DUPLICATE OR DISCLOSE TO THIRD PARTIES WITHOUT WRITTEN PERMISSION OF FASCO IND. INC., ELDON MO.
PART NUMBER: D1047	FASCO INDUSTRIES, INC. MOTOR DIVISION ELDON PLANT
APPLICATION: DIST. SALES	MOTOR TYPE
FINISH COLOR: GRAY	P.S.C.
MOTOR WEIGHT: 8.50 LBS.	MOTOR NUMBER 7187 0251
ENVIRONMENT: WET	REV. 2
INSULATION CLASS: B	

6135 6065,R REV. 1

LOCATE ϕ OF NAMEPLATE ON ϕ OF SLEEVE TO READ RIGHT FROM LEAD END OF MOTOR CENTER AT 30° CWLE.
SIZE 3.50 X 1.00