

- NOTES:
1. THRU AIR SPACING BETWEEN WIRE AND METAL .094 MIN.
  2. TIE BOLT TORQUE TOLERANCE 7-12 IN. LBS.
  3. FOR WASHER SET-UP, SEE CHART C600 0279, DETAIL "A".
  4. SALES TO SPECIFY ON P.O. WHICH PACK TO USE.
  5. LOCATE TOP LABEL, 6120 6085, ON CENTER LINE OF STATOR AT 0° TO READ RIGHT FROM LEAD END OF MOTOR.

ECO	REV.	DATE	SPEC/CHECK
632784	0	4-2-04	JAK/RWS
634832	1	7-8-05	MKR/MKR
640438	2	9-14-09	MKR/MKR

A. SEE PACKAGING MANUAL PAGE 2 FOR PACKAGING PROCEDURES.

1 MOTOR/CARTON;  
18 MOTORS/LAYER;  
5 LAYERS/PALLET;  
90 MOTORS/PALLET.

B. SEE DRAWING 8785 6079 SH. 6 FOR PALLET LAYOUT.

C. CENTER LABEL, 6120 6641, ON END OF CARTON.

D. PLACE PAMPHLET, 6122 4579, IN CARTON WITH MOTOR.

71xx xxxxR

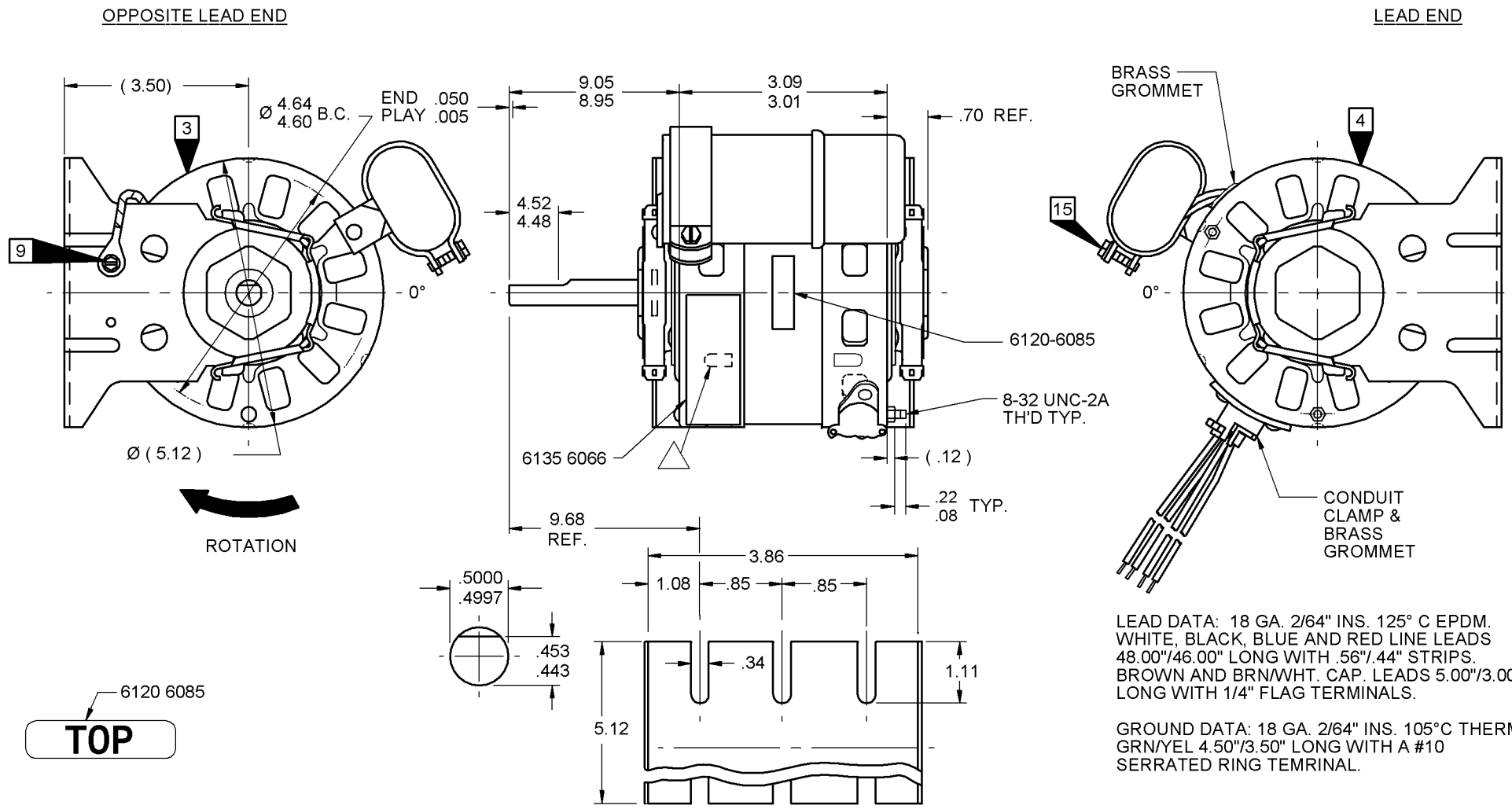
71xx xxxxC

71xx xxxxZ

PRODUCTION TEST AT IDLE 115 VOLTS 60 HZ		MOTOR SPEED	PERFORMANCE TEST 115 VOLTS 60 HZ 1 PH 1/30 HP CAP. 4 MFD 370 VAC										
AMP	WATT		IDLE			LOADED				LOCKED			BREAK
			RPM	AMP	WATT	OZ/IN	RPM	AMP	WATT	OZ/IN	AMP	WATT	OZ/IN
.39 — .32	39.6 — 32.4	HIGH	1176	.35	36	17.0	1100	.42	45	22.0	.75	84	35.0
.22 — .18	23.1 — 18.9	MED.	1162	.20	21	7.0	1100	.24	25	13.0	.46	48	19.0
.15 — .13	15.4 — 12.6	LOW	1152	.14	14	3.0	1100	.16	15	8.0	.30	31	11.0

HI-POT TEST 2000 VOLTS  
MAX LEAKAGE CURRENT 5 mA

7186 0334 MA



7186 0334 = MADE IN U.S.A.  
7186 0334R = ASSEMBLED IN MEXICO

**FASCO** FASCO INDUSTRIES, INC. MOTOR DIVISION

V. 115-127 HZ 60 PH 1 AO ROT ←

HP 1/30 INS CL B CAP 4 MFD 370 VAC

AMP .53 TYPE U186B1 NO. 7186-0334

RPM 1100 (3 SPD) 40°C AMB

**SAFETY WARNING**

THIS MOTOR MUST BE GROUNDED IN ACCORDANCE WITH LOCAL OR NATIONAL ELECTRICAL CODES TO PREVENT POSSIBLE INJURY DUE TO ELECTRICAL SHOCK

MODEL D1045

DATE/BAR CODE AREA PER 8882 6003

6135 6066,R REV. 1

SPECIAL INSTRUCTIONS: SHAFT IS BONDERIZED. ROTOR IS RUSTPROOFED.

△ LANCE MUST BE COMPLETELY COVERED BY NAMEPLATE. PAMPHLET PACKED WITH MOTOR.

MOTORS PACKED MAX. PER SKID: \_\_\_ PALLET PACK, 90 CARTON PACK, \_\_\_ TRAY PACK.

CUSTOMER: FASCO DISTRIBUTING CO.

PART NUMBER: D1045

APPLICATION: DIST. SALES

FINISH COLOR: GRAY

MOTOR WEIGHT: 7.50 LBS.

ENVIRONMENT: WET

INSULATION CLASS: B

PROPRIETARY: DO NOT DUPLICATE OR DISCLOSE TO THIRD PARTIES WITHOUT WRITTEN PERMISSION OF FASCO IND. INC., ELDON MO.

FASCO INDUSTRIES, INC. MOTOR DIVISION ELDON PLANT

MOTOR TYPE P.S.C.

B	LA	FR	A	S	C	E	B	A
00	86	12	V	12	BC	7	8	0

MOTOR NUMBER 7186 0334 R

REV. 2

LOCATE NAMEPLATE .05 FROM EDGE OF OPP. LEAD END COVER TO READ RIGHT FROM LEAD END OF MOTOR CENTER AT 40° CCWLE.

SIZE 3.50 X 1.00