

- NOTES
1. STATOR LOCATION DIMENSION IS FROM SLEEVE EDGE (OPPOSITE LEAD END) TO STATOR STEEL 1.03/1.01.
  2. STATOR STACK 2".
  3. THRU AIR SPACING BETWEEN WIRE AND METAL .094 MIN.
  4. TIE BOLT TORQUE TOLERANCE 13-17 IN. LBS.
  5. FOR WASHER SET-UP, SEE CHART C600 0279, DETAIL "A".
  6. SALES TO SPECIFY ON P.O. WHICH PACK TO USE.
  7. PRESS STATOR SO THAT MODULAR CONNECTOR LEADS EXIT 65° CCWLE FROM LEAD NOTCH IN SLEEVE AND WELD SEAM IS LINED UP APPROXIMATELY AS SHOWN.
  8. TWIST THE MODULAR CONNECTOR PRIOR TO INSERTING INTO THE LEAD NOTCH WITH LABELED SIDE TOWARD LEAD END END SHIELD AND PLACE EXCESS LEAD MATERIAL BETWEEN COILS AND SLEEVE. THE TWISTED BUNDLE WILL GATHER THE LEADS TOGETHER LOOSELY AND HELP KEEP THE LEADS OUT OF THE STATOR I.D.

ECO	REV.	DATE	SPEC/CHECK
632764	0	4-1-04	MKR/MKR
634819	1	7-1-05	MKR/MKR
638853	2	11-20-08	MKR/MKR
640982	3	1-20-10	MKR/MKR

71x xxx;R

A. SEE PACKAGING MANUAL PAGE 19 FOR PACKAGING PROCEDURES.

1 MOTOR/CARTON;  
16 MOTORS/LAYER;  
2 LAYERS/PALLET;  
32 MOTORS/PALLET.

B. SEE DRAWING 8785 6079 SH. 1 FOR PALLET LAYOUT.

C. PLACE EYELETS, 8654 6004, AND GROMMETS, 8684 6009, IN COIN ENVELOPE, 9782 4000, AND PACK IN CARTON WITH MOTOR.

D. CENTER LABEL, 6120 6634, ON END OF CARTON.

E. PLACE PAMPHLET, 6122 4579, IN CARTON WITH MOTOR.

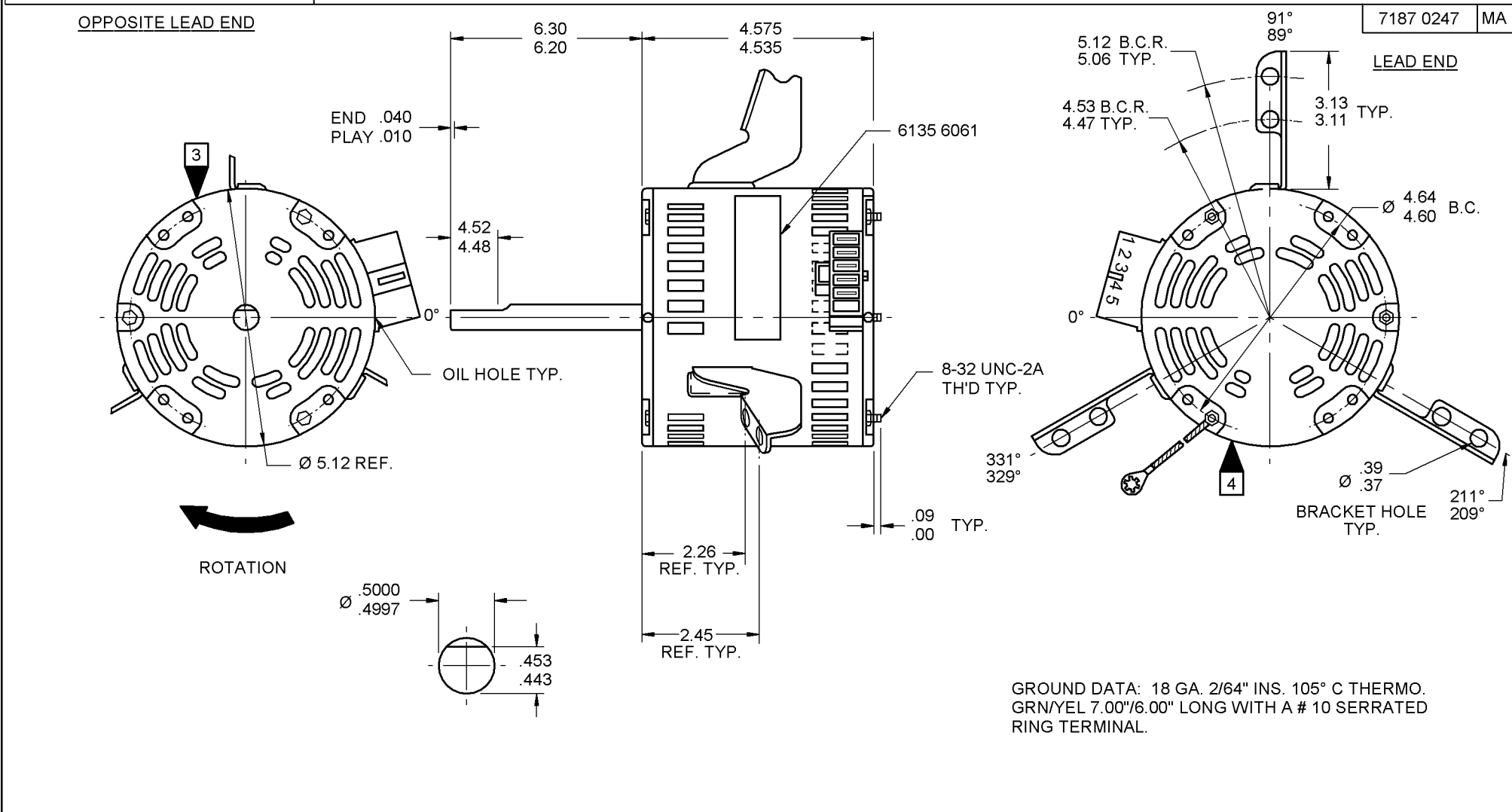
71x xxxxC

71x xxxxZ

If Printed, this is an Uncontrolled Document.

PRODUCTION TEST AT IDLE 265 VOLTS 60 HZ		MOTOR SPEED	PERFORMANCE TEST 265 VOLTS 60 HZ 1 PH 1/4 HP CAP. 10 MFD 370 VAC										
AMP	WATT		IDLE			LOADED				LOCKED			BREAK
			RPM	AMP	WATT	OZ/IN	RPM	AMP	WATT	OZ/IN	AMP	WATT	OZ/IN
.94 — .77	220.0 — 180.0	HIGH	1190	.85	200	314	1075	1.61	428	158	2.81	714	380
.65 — .53	150.7 — 123.3	MED.	1187	.59	137	195	1075	1.02	273	96	1.82	438	239
.50 — .41	115.5 — 94.5	LOW	1183	.45	105	128	1075	.71	189	64	1.25	287	157

HI-POT TEST 2000 VOLTS  
MAX LEAKAGE CURRENT 5 mA



7187 0247 = MADE IN U.S.A.  
7187 0247R = ASSEMBLED IN MEXICO

**FASCO** FASCO INDUSTRIES, INC. MOTOR DIVISION

THERMALLY PROTECTED CONNECTION DIAGRAM

V. 265 HZ 60 PH 1 INS CL B ROT  
HP 1/4 AO CAP 10 MFD 370 VAC  
AMP 1.6 40° C AMB NO. 7187-0247  
RPM 1075 (3 SPD) TYPE U187B1

MODEL D1043

SAFETY WARNING  
THIS MOTOR MUST BE GROUNDED IN ACCORDANCE WITH LOCAL OR NATIONAL ELECTRICAL CODES TO PREVENT POSSIBLE INJURY DUE TO ELECTRICAL SHOCK

DATE/BAR CODE AREA PER 8882 6003

6135 6061,R REV. 1

SPECIAL INSTRUCTIONS: SHAFT IS BONDERIZED. ROTOR IS RUSTPROOFED.  
EYELETS AND GROMMETS PACKED WITH MOTOR. PAMPHLET PACKED WITH MOTOR.

MOTORS PACKED MAX. PER SKID: PALLET PACK, 32 CARTON PACK, \_\_\_ TRAY PACK.

CUSTOMER: FASCO DISTRIBUTING CO. PROPRIETARY: DO NOT DUPLICATE OR DISCLOSE TO THIRD PARTIES WITHOUT WRITTEN PERMISSION OF FASCO IND. INC., ELDON MO.

PART NUMBER: D1043 FASCO INDUSTRIES, INC. MOTOR DIVISION ELDON PLANT

APPLICATION: DIST. SALES MOTOR TYPE P.S.C. MOTOR NUMBER 7187 0247 REV. 3

FINISH COLOR: GRAY

MOTOR WEIGHT: 12.25 LBS.

ENVIRONMENT: WET

INSULATION CLASS: B

B	LA	FR	A	S	C	E	B	A
00	87	33	V	08	AA	7	7	0

LOCATE  $\phi$  OF NAMEPLATE ON  $\phi$  OF SLEEVE TO READ RIGHT FROM LEAD END OF MOTOR CENTER AT 30° CWLE.  
SIZE 3.50 X 1.00