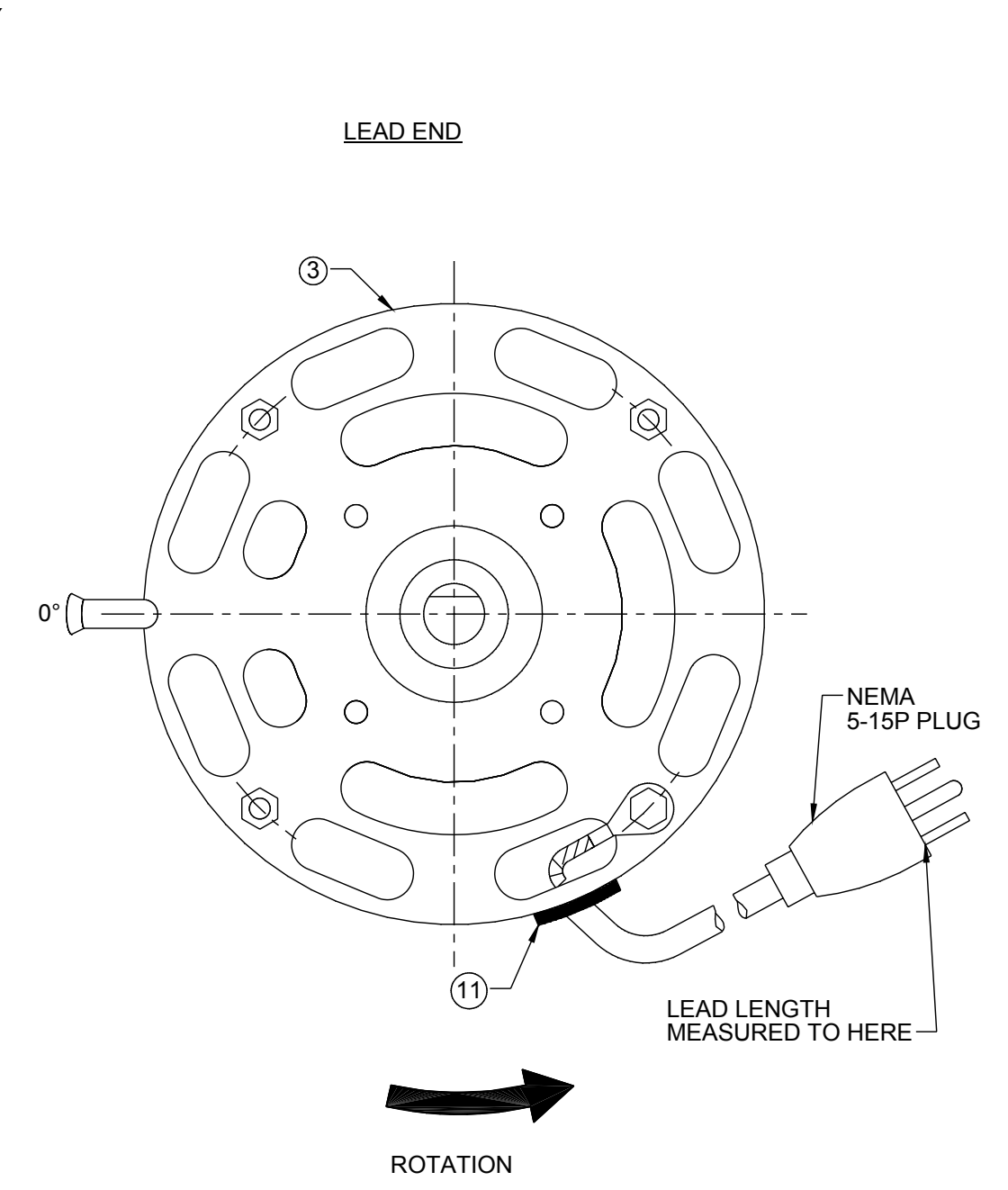
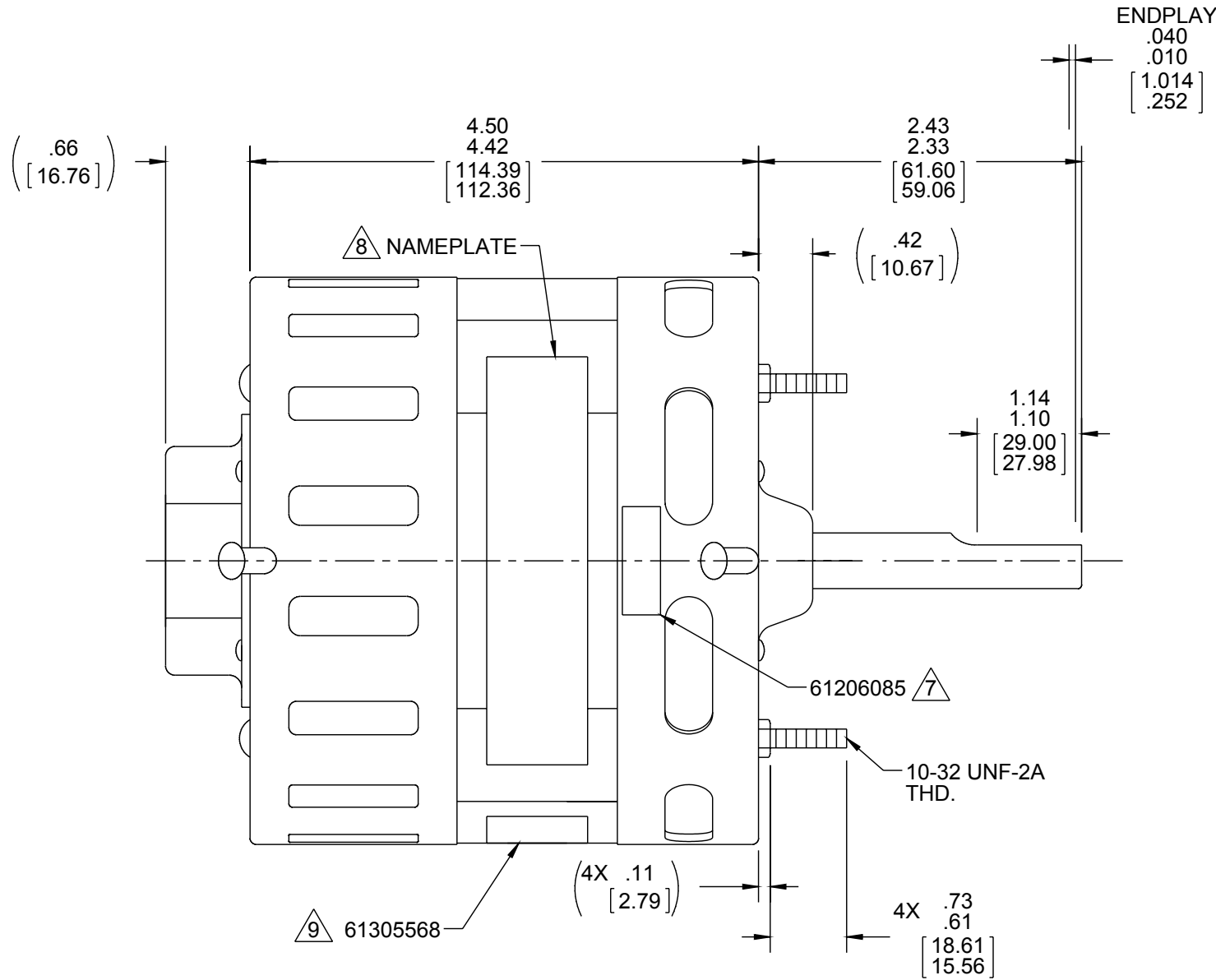
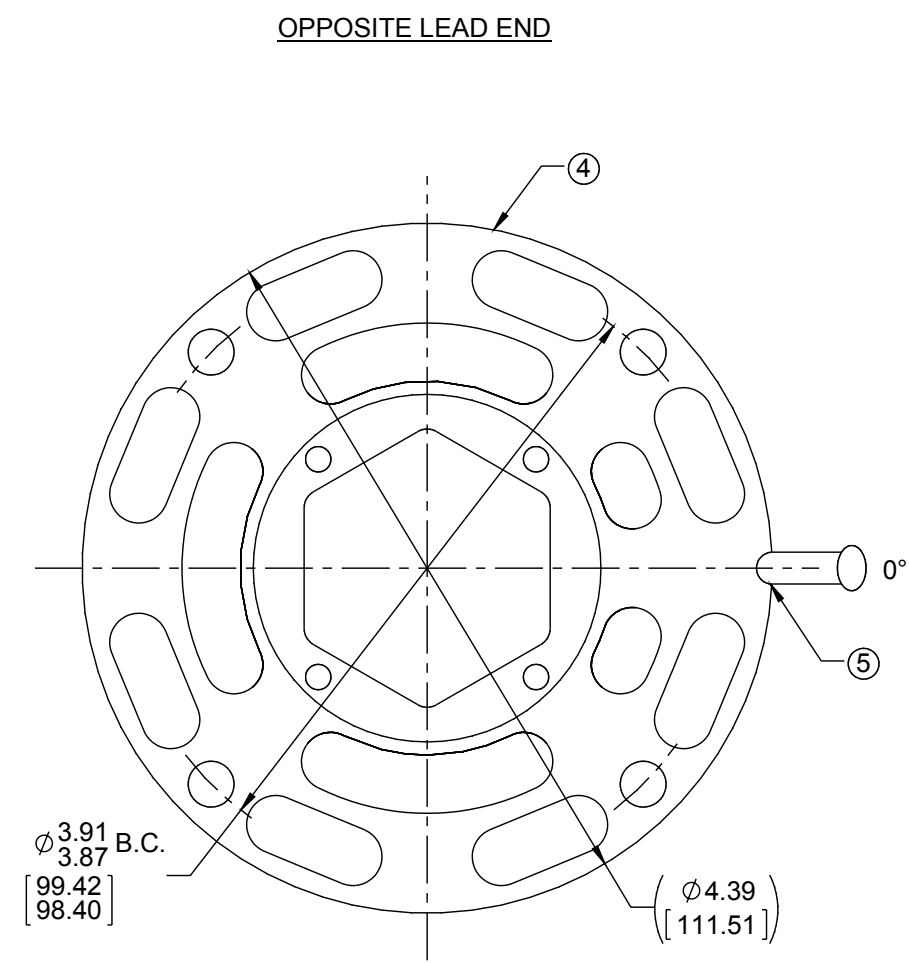


ORACLE PART REV. 009

NOTES:

1. THRU AIR SPACING BETWEEN WIRE AND METAL .063 [1.600].
2. TIE BOLT TORQUE TOLERANCE 7 - 10 IN. LBS.
3. ROTOR FREENESS TO BE WITHIN 1 OZ. IN.
4. FOR WASHER SET-UP, SEE CHART C6050279, DETAIL "P"
5. MAXIMUM 0.1 Ω RESISTANCE BETWEEN GROUND TERMINAL AND MOTOR FRAME.
6. ASSEMBLE NYLON GROMMET, 00613346, IN LEAD END COVER ASSEMBLY IN LEAD EXIT.
7. LOCATE TOP LABEL, 61206085, AT 0° AS SHOWN TO READ RIGHT FROM OPP. L.E. OF MOTOR.
8. LOCATE ϕ OF NAMEPLATE ON ϕ OF STATOR TO READ RIGHT FROM OPP. L.E. OF MOTOR CENTER AT 0°.
9. LOCATE 61305568 SAFETY LABEL TO READ SAME DIRECTION AS NAMEPLATE LABEL.
10. MOTORS MUST START WITH 90 VOLTS APPLIED TO LOWEST SPEED.
11. SEE PACKAGING MANUAL PAGE 2 FOR PACKAGING PROCEDURES.
1 MOTOR PER CARTON, 40 MOTORS PER LAYER. 6 LAYERS PER PALLET., 240 MOTORS MAX. PER PALLET.
12. SEE DRAWING 87856079 SHEET 1 FOR PALLET LAYOUT.
13. CENTER LABEL, 61199722 ON END OF CARTON.
14. PLACE PAMPHLET, 61224579 IN CARTON WITH MOTOR.
15. SHAFT IS BONDERIZED.
16. CARTON LABELS MUST ALL FACE ONE DIRECTION TOWARD THE OPEN END OF THE PALLET. SEE 88834408.
17. NO PACKAGING TAPE OVER CARTON LABEL.



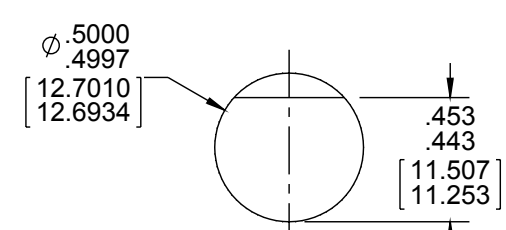
61206085
TOP

LEAD DATA
18 GA. 90°C., 2/64 INSUL.
SJO 3 COND. CORDSET.
14.00/12.00 [355.60/304.80]

61305568

SAFETY WARNING
This motor must be grounded in accordance with local or national electrical codes to prevent possible injury due to electrical shock

AVERTISSEMENT DE SECURITE
Ce moteur doit être fondée sur conformément à la réglementation locale ou national électrique codes pour prévenir d'éventuelles blessures en raison de choc électrique



00464071

FASCO Fasco Industries, Inc. Motor Division

Assembled in Mexico
No. 71086818 TYPE U8 AO PH 1
115 V 60 Hz
3.07 A 1610 RPM 1/10 HP
Model D1039

Thermally Protected OSB LR34751
Max Amb: 40°C

61299553

CUSTOMER:	FASCO DIST.	APPLICATION:	DIST. SALES	HI-POT TEST 2000 VOLTS MAX. LEAKAGE CURRENT 5 mA	PRODUCTION TEST AT IDLE 115 VOLTS 60 Hz		MOTOR SPEED					
CUSTOMER PN:	D1039	MOTOR WEIGHT:	6.06 LBS.		AMP	WATT						
		ENVIRONMENT:	DRY		2.97 - 2.43	149.6 - 122.4	HIGH					
		CLASS A		MOTOR TYPE SHADED POLE			REFERENCE SAMPLE					
				B	LA	FR	A	S	C	E	B	A
				00	08	10	F	06	OE	5	9	0
TYPICAL PERFORMANCE AT 115 VOLTS 60 HZ												
1 PH 1/10 HP												
MOTOR SPEED	IDLE			LOADED			LOCKED			BREAK		
	RPM	AMP	WATT	IN OZ	RPM	AMP	WATT	IN OZ	AMP		WATT	IN OZ
HIGH	1760	2.7	136	66	1610	3.1	208	26	4.9	286	77	

DRAWING REVISION K	REVISION BY MLS	DATE 12/2/2015	TOLERANCES UNLESS OTHERWISE SPECIFIED: DEC. INCH mm ANGLE .X ±0.1 [±2.5] .XX ±0.01 [±0.25] .XXX ±0.005 [±0.127] .XXXX ±0.0005 [±0.0127]	DRAWN BY MLS	DATE 12/2/2015	REGAL Regal Beloit America, Inc.
ECO-0089425	APPROVED BY BGP	DATE 12/2/2015	REMOVE BURRS & BREAK SHARP EDGES: .003/.015 [076/381] X 45° CORNER FILLETS: R.02 [51] MACHINED SURFACES: 125/3.2 INCH/mm	APPROVED BY BGP	DATE 12/2/2015	DESCRIPTION MOTOR ASSY
SEPARATE SAFETY LABEL FROM NAMEPLATE LABEL			THIRD ANGLE PROJECTION	REFERENCE	MATERIAL	PROCESS/FINISH GRAY
COPYRIGHT REGAL BELOIT AMERICA, INC. ALL RIGHTS RESERVED. PROPRIETARY AND CONFIDENTIAL INFORMATION - THIS DOCUMENT IS THE PROPERTY OF REGAL BELOIT AMERICA, INC. (OWNER) AND CONTAINS OWNERS PROPRIETARY INFORMATION. ANY PERSON, CORPORATION OR OTHER FIRM RECEIVING IT IS DEEMED, BY RECEIVING IT, TO AGREE THAT IT, AND/OR ANY PART OF IT, SHALL NOT BE DISCLOSED TO ANY PERSON, CORPORATION OR OTHER ENTITY, DUPLICATED, AND/OR USED, EXCEPT AS EXPRESSLY APPROVED IN WRITING IN ADVANCE BY OWNER. THIS DOCUMENT SHALL BE RETURNED TO OWNER UPON REQUEST. IT MAY BE SUBJECT TO CERTAIN RESTRICTIONS UNDER APPLICABLE EXPORT CONTROL LAWS AND REGULATIONS.			SIZE C	DRAWING NUMBER 71086818	SHEET 1 OF 1	