

NOTES:

1. THRU AIR SPACING BETWEEN WIRE AND METAL .063 MIN.
2. TIE BOLT TORQUE TOLERANCE 7-10 IN. LBS.
3. ROTOR FREENESS TO BE WITHIN 1 OZ. IN.
4. FOR WASHER SET-UP, SEE CHART C600 0279, DETAIL "H"
5. LOCATE WARNING LABEL, 6120 6122, ON CENTERLINE OF STATOR AT 180°, TO READ RIGHT FROM LEAD END OF MOTOR.
6. LOCATE TOP LABEL, 6120 6085, ON BRACKET FOOT AT 180°, TO READ RIGHT FROM LEAD END OF MOTOR.
7. SALES TO SPECIFY ON P.O. WHICH PACK TO USE.

ECO	REV.	DATE	SPEC/CHECK
632466	0	2-11-04	JAK/RWS
632642	1	3-12-04	GAE/RWS
639861	2	6-5-09	MKR/MKR

- 71xx xxxx,M
- A. SEE PACKAGING MANUAL PAGE 2 FOR PACKAGING PROCEDURE.
- 1 MOTOR/CARTON;
 - 24 MOTORS/LAYER;
 - 5 LAYERS/PALLET;
 - 120 MOTORS/PALLET.
- B. SEE DRAWING 8785 6079 SH. 5 FOR PALLET LAYOUT.
- C. CENTER LABEL, 6120 6623, ON END OF CARTON.
- D. PLACE PAMPHLET, 6122 4579, IN CARTON WITH MOTOR.

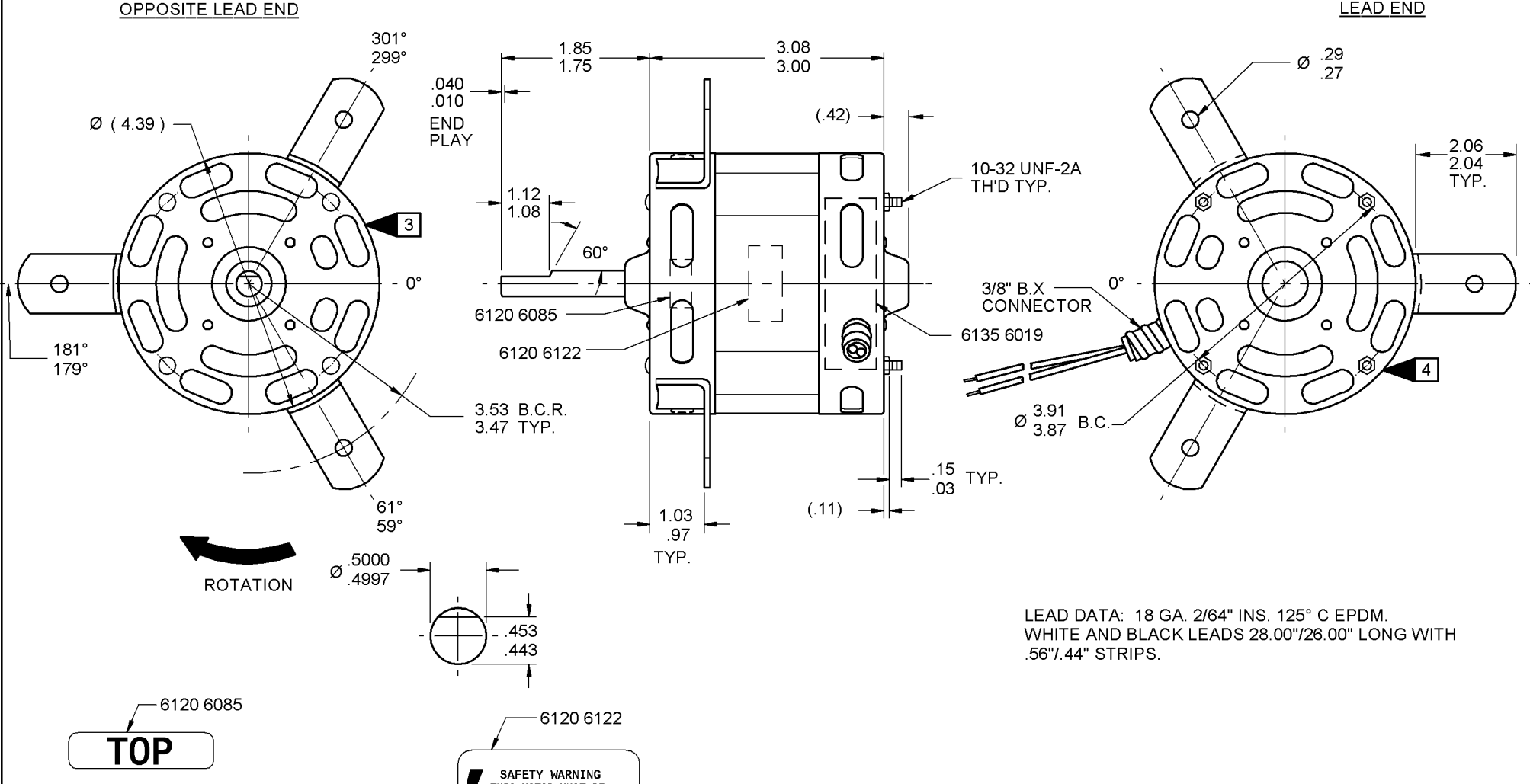
71xx xxxxC

PRODUCTION TEST AT IDLE 115 VOLTS 60 HZ		MOTOR SPEED	PERFORMANCE TEST 115 VOLTS 60 HZ 1 PH 1/10 HP										
AMP	WATT		IDLE			LOADED				LOCKED			BREAK
			RPM	AMP	WATT	OZ/IN	RPM	AMP	WATT	OZ/IN	AMP	WATT	OZ/IN
3.89 — 3.19	180.4 — 147.6	HIGH	1756	3.54	164	81.0	1550	4.05	267	30.0	6.09	377	92.0

HI-POT TEST 2000 VOLTS
MAX LEAKAGE CURRENT 5 mA

MOTOR MUST START WITH 90 VOLTS APPLIED TO LOWEST SPEED.

7108 7127 MA



LEAD DATA: 18 GA. 2/64" INS. 125° C EPDM. WHITE AND BLACK LEADS 28.00"/26.00" LONG WITH .56"/.44" STRIPS.

7108 7127 = MADE IN U.S.A.
7108 7127M = ASSEMBLED IN MEXICO

FASCO FASCO INDUSTRIES, INC. MOTOR DIVISION

V. 115 HZ 60 PH 1 40°C AMB ROT RPM 1550 AMP 4.4 HP 1/10 NO. 7108-7127 THERMALLY PROTECTED TYPE U8B1 AO INS CL B

DATE/BAR CODE AREA PER 8882 6003

MODEL D1008

6135 6019,M REV. 1

LOCATE NAMEPLATE .10 FROM FACE OF LEAD END COVER TO READ RIGHT FROM LEAD END OF MOTOR CENTER AT 180°. SIZE 2.30 X .75.

SPECIAL INSTRUCTIONS: SHAFT IS BONDERIZED. PAMPHLET PACKED WITH MOTOR.

MOTORS PACKED MAX. PER SKID: _____ PALLET PACK, 120 CARTON PACK.

CUSTOMER: FASCO DISTRIBUTING CO.

PART NUMBER: D1008

APPLICATION: DIST. SALES

FINISH COLOR: GRAY

MOTOR WEIGHT: 5.25 LBS.

ENVIRONMENT: DAMP

INSULATION CLASS: B

PROPRIETARY: DO NOT DUPLICATE OR DISCLOSE TO THIRD PARTIES WITHOUT WRITTEN PERMISSION OF FASCO IND. INC., ELDON MO.

FASCO INDUSTRIES, INC. MOTOR DIVISION ELDON PLANT

MOTOR TYPE	MOTOR NUMBER	REV.
SHADED POLE	7108 7127 M	2
B LA FR A S C E B A		
00 08 13 V 03 HH 5 5 0		