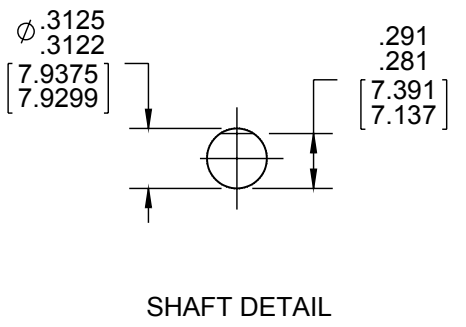
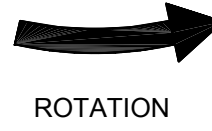
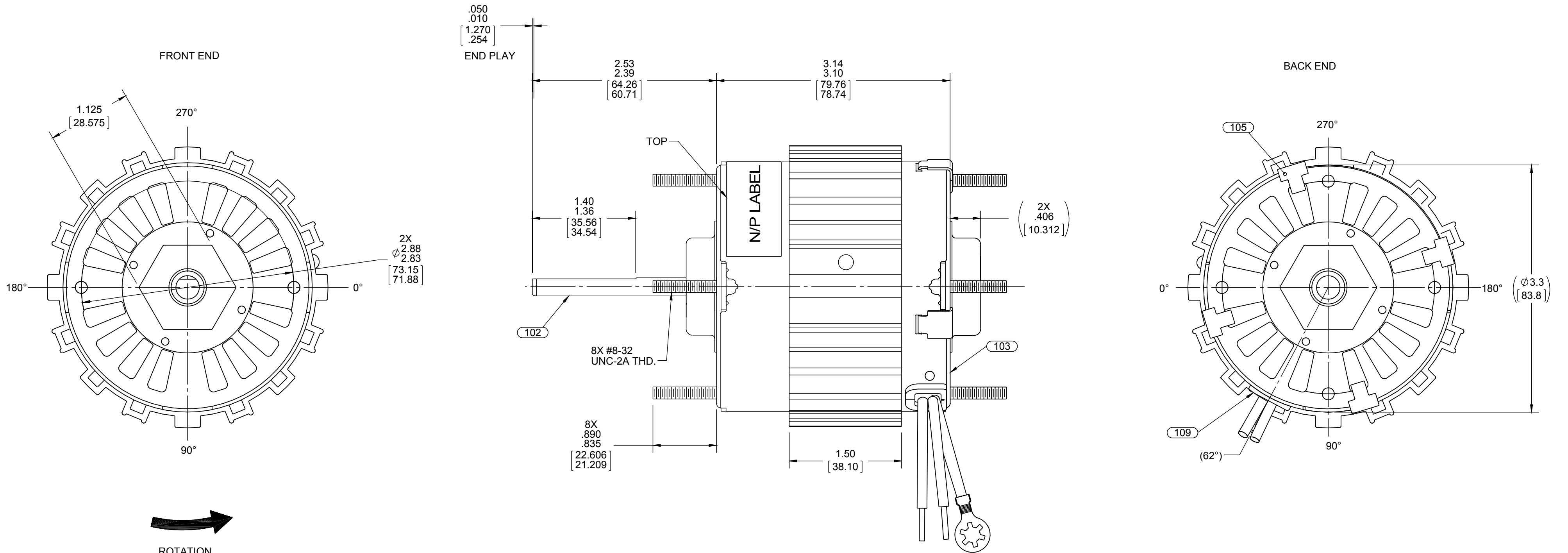


ORACLE REV. 000



**LEAD MATERIAL**  
 18 GA. 125°C 2/64 INSUL.  
 X-LINKED POLY, (2) BLACK,  
 13.00/11.00[330.20/279.40] LONG  
 WITH .56/.44[14.22/11.18] STRIP

**GROUND LEAD MATERIAL**  
 18 GA. 125°C 2/64 INSUL.  
 X-LINKED POLY, GRN/YEL  
 13.00/11.00[330.20/279.40] LONG  
 W/RING TERM. 8902-0157  
 AMP 350436-2

- NOTES:  
 1. MOTOR HAS 416 S.S. SHAFT.  
 2. NO PACKAGING TAPE OVER CARTON LABEL.

6130 5568

00464398

**SAFETY WARNING**  
 This motor must be grounded in accordance with local or national electrical codes to prevent possible injury due to electrical shock

**AVERTISSEMENT DE SÉCURITÉ**  
 Ce moteur doit être fondée sur conformément à la réglementation locale ou national électrique codes pour prévenir d'éventuelles blessures en raison de choc électrique

**FASCO** No. 71732239  
 TYPE U73B1

Assembled In Mexico

115 V 60 Hz T.P. Class B  
 2.18 A 1550 RPM

Model D043 E40513  
 Reference 1/15 HP Max Amb 40° C

AO  
 61299553

CUSTOMER:	FASCO DIST.	APPLICATION:	COUNTER SALES				
CUSTOMER PN:	D043	MOTOR WEIGHT:					
		ENVIRONMENT:	DAMP				
UP							
DOWN							
HORIZONTAL							
MOTOR TYPE							
SHADED POLE							
REFERENCE SAMPLE							
X-0006674-2							
B	LA	FR	A				
00	73	35	V				
S							
06							
C	E	B	A				
HC	5	3	0				
TYPICAL PERFORMANCE AT 115 VOLTS 60 HZ							
MOTOR SPEED	IDLE		LOADED		LOCKED		BREAK
	RPM	AMP	WATT	IN OZ	RPM	AMP	
	1780	1.73	90	47.6	1550	2.17	157

APPLY IN A CONVENIENT LOCATION TO READ FROM BACK END

DRAWING REVISION	REVISION BY	DATE	TOLERANCES UNLESS OTHERWISE SPECIFIED:	DRAWN BY	Regal Beloit America, Inc.
D	J.ZHU	12-29-2015	DEC. INCH mm ANGLE	M.GU	
ECO-0091042	APPROVED BY	DATE	.X ±0.1 [±2.5]	DATE	05-05-2014
	C.ZHANG	12-29-2015	.XX ±0.01 [±0.25]	APPROVED BY	A.SUN
ECO DESCRIPTION			.XXX ±0.005 [±0.127]	DATE	05-05-2014
SEE ECO			.XXX ±0.0005 [±0.0127]	REFERENCE	
COPYRIGHT REGAL BELOIT AMERICA, INC. ALL RIGHTS RESERVED. PROPRIETARY AND CONFIDENTIAL INFORMATION - THIS DOCUMENT IS THE PROPERTY OF REGAL BELOIT AMERICA, INC. (OWNER) AND CONTAINS OWNER'S PROPRIETARY INFORMATION. ANY PERSON, CORPORATION OR OTHER FIRM RECEIVING IT IS DEEMED, BY RECEIVING IT, TO AGREE THAT IT, AND/OR ANY PART OF IT, SHALL NOT BE DISCLOSED TO ANY PERSON, CORPORATION OR OTHER ENTITY, DUPLICATED, AND/OR USED, EXCEPT AS EXPRESSLY APPROVED IN WRITING IN ADVANCE BY OWNER. THIS DOCUMENT SHALL BE RETURNED TO OWNER UPON REQUEST. IT MAY BE SUBJECT TO CERTAIN RESTRICTIONS UNDER APPLICABLE EXPORT CONTROL LAWS AND REGULATIONS.			REMOVE BURRS & BREAK SHARP EDGES: 003/015 [076/381] X 45° CORNER FILLETS: R.02 [51] MACHINED SURFACES: 125/ mm 3.2/ INCH mm 3.2/ mm SHOWN IN [BRACKETS]	MATERIAL	PROCESS/FINISH
				THIRD ANGLE PROJECTION	BLACK
				SIZE	DRAWING NUMBER
				C	71732239
					SHEET
					1 OF 2

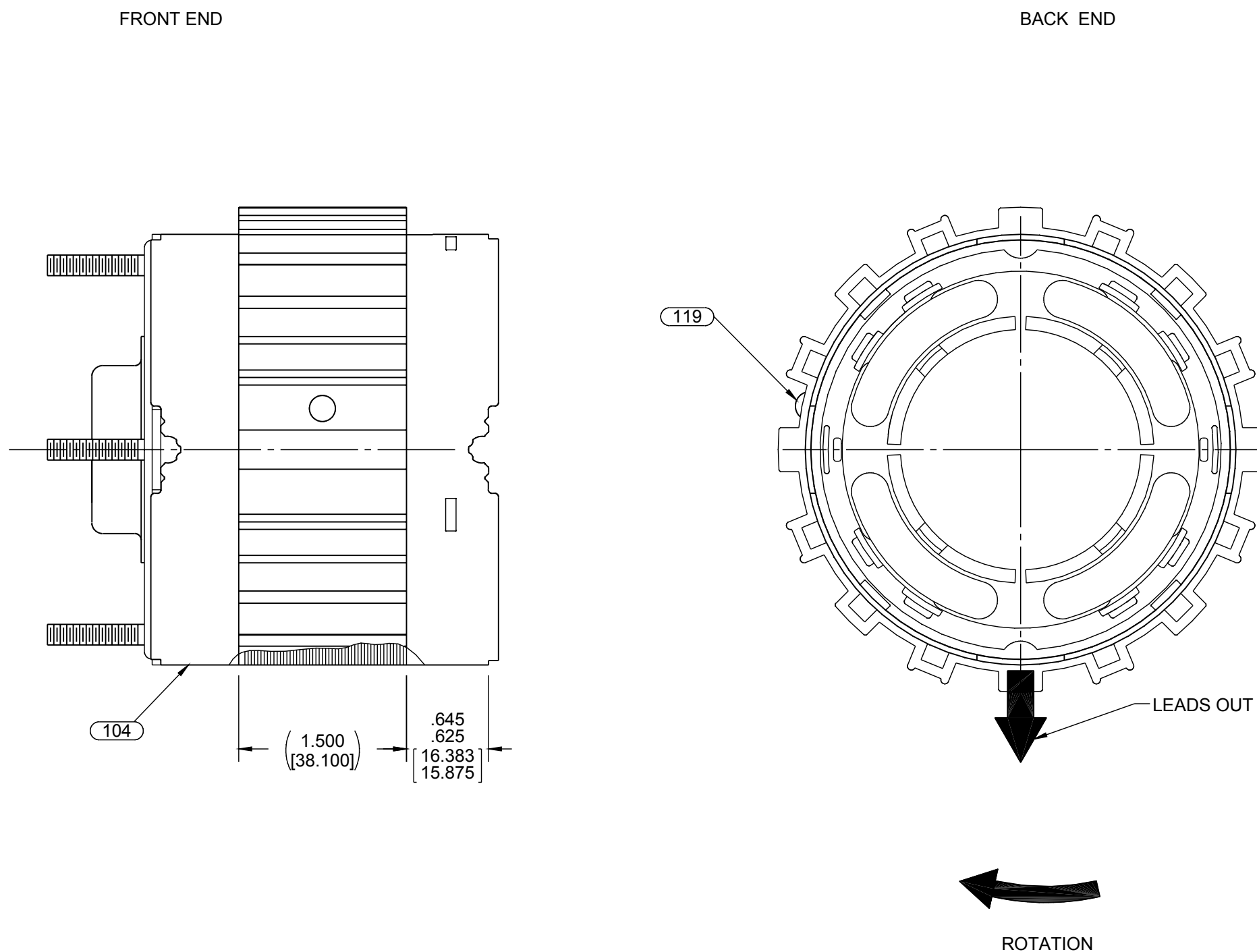
4

3

2

1

ORACLE REV. 00D



NOTES:

1. MAXIMUM TORQUE REQUIRED TO TURN MOTOR SHAFT IS 3/8 INCH-OUNCE.
2. MAKE-UP WASHERS ARE TO BE ADDED OR DELETED TO ACHIEVE REQUIRED ENDPLAY.
3. SEE ROTOR AND SHAFT DRAWING FOR WASHER SET-UP.
4. DRILL PILOT HOLE WITH #37 DRILL .300/.275[7.620/6.985] DEEP AT CENTER OF DRILL AND PIN COOLING BAND SECURELY TO STATOR AND SLEEVE ASSEMBLY IN ONE PLACE.

PACKING SPECIFICATIONS

NOTES:

1. PACK PER PS 8883 4200. (1) PER CONTAINER, (40) PER LAYER, (6) LAYERS, (240) MOTORS MAX. PER PALLET.
2. PLACE FILLER FOAM RING ON END OF MOTOR & FILLER TUBE ON SHAFT EXTENSION END. PLACE MOTOR IN CARTON, LEADS DOWN, CLOSE FLAPS AND TAPE. CARTON LABELS MUST ALL FACE ONE DIRECTION TOWARD OPEN END OF PALLET. SEE PS 88834408.
3. NO PACKING TAPE OVER CARTON LABEL.
4. PLACE FLAT PAD ON PALLET, (1) BETWEEN EACH LAYER, & (1) ON TOP LAYER OF CARTON.

DRAWING REVISION D	REVISION BY J.ZHU	DATE 12-29-2015	TOLERANCES UNLESS OTHERWISE SPECIFIED: DEC. INCH mm ANGLE	DRAWN BY M.GU	Regal Beloit America, Inc.	
ECO ECO-0091042	APPROVED BY C.ZHANG	DATE 12-29-2015	.X ±0.1 [±2.5] .XX ±0.01 [±0.25] .XXX ±0.005 [±0.127] .XXXX ±0.0005 [±0.0127]	DATE 05-05-2014	DESCRIPTION MODEL-SFHP-3.3	
ECO DESCRIPTION SEE ECO			REMOVE BURRS & BREAK SHARP EDGES: .003/.015 [0.076/.381] X 45° CORNER FILLETS: R.02 [5.1] MACHINED SURFACES: 125/3.2 INCH/mm	APPROVED BY A.SUN	MATERIAL	
<small>COPYRIGHT REGAL BELOIT AMERICA, INC. ALL RIGHTS RESERVED. PROPRIETARY AND CONFIDENTIAL INFORMATION - THIS DOCUMENT IS THE PROPERTY OF REGAL BELOIT AMERICA, INC. ("OWNER") AND CONTAINS OWNER'S PROPRIETARY INFORMATION. ANY PERSON, CORPORATION OR OTHER FIRM RECEIVING IT IS DEEMED, BY RECEIVING IT, TO AGREE THAT IT, AND/OR ANY PART OF IT, SHALL NOT BE DISCLOSED TO ANY PERSON, CORPORATION OR OTHER ENTITY, DUPLICATED, AND/OR USED, EXCEPT AS EXPRESSLY APPROVED IN WRITING IN ADVANCE BY OWNER. THIS DOCUMENT SHALL BE RETURNED TO OWNER UPON REQUEST. IT MAY BE SUBJECT TO CERTAIN RESTRICTIONS UNDER APPLICABLE EXPORT CONTROL LAWS AND REGULATIONS.</small>			THIRD ANGLE PROJECTION	DATE 05-05-2014	PROCESS/FINISH BLACK	
				SIZE C	DRAWING NUMBER 71732239	SHEET 2 OF 2

4

3

2

1