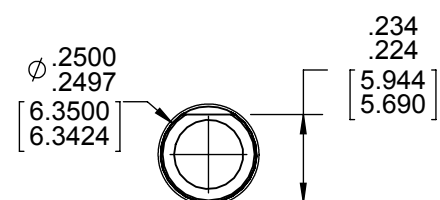
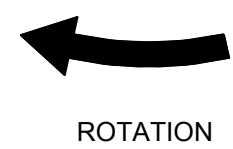
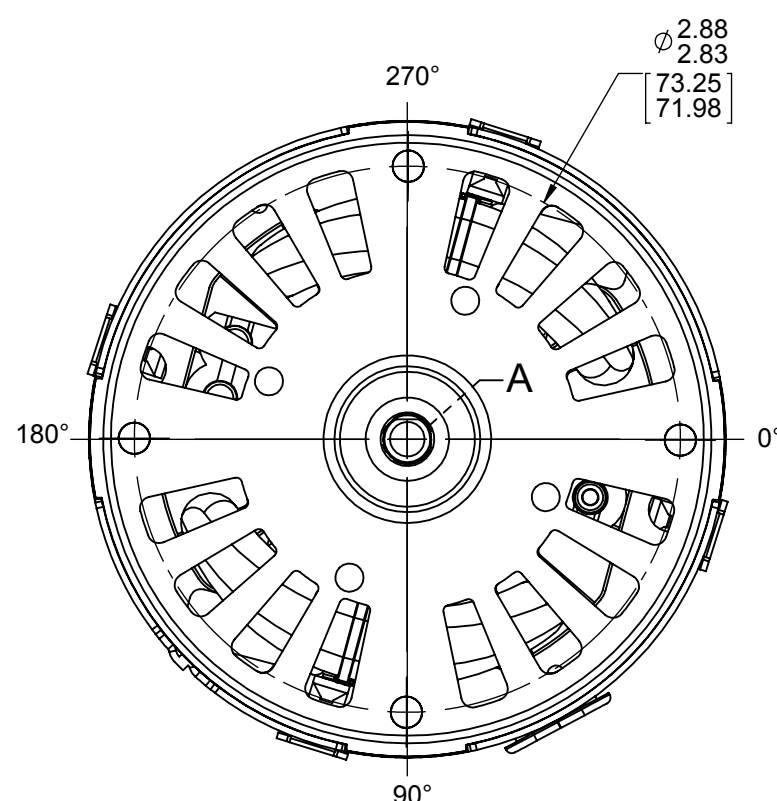
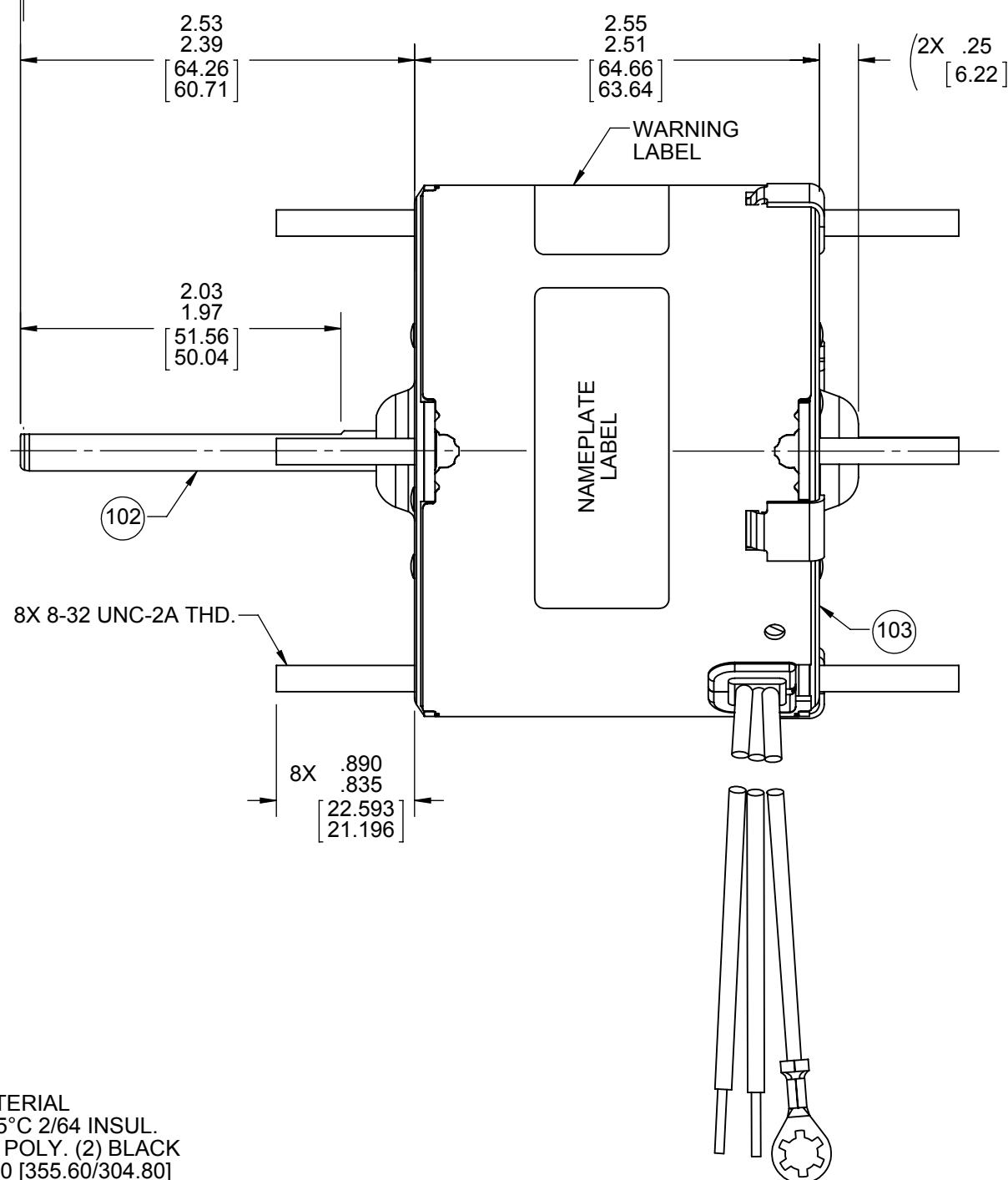


FRONT END



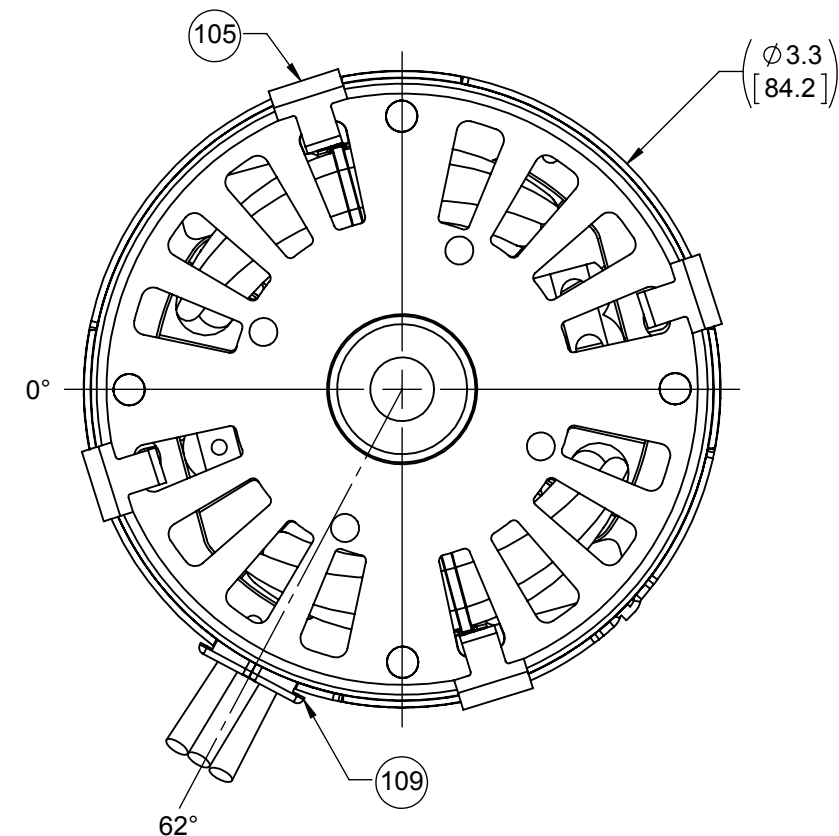
DETAIL A

ENDPLAY
.050
.010
[1.270
.254]



LEAD MATERIAL
18 GA. 125°C 2/64 INSUL.
X-LINKED POLY. (2) BLACK
14.00/12.00 [355.60/304.80]
.56/.44 [14.22/11.18] STRIP
GROUND MATERIAL
GRN/YEL
14.00/12.00 [355.60/304.80]
RING TERM.
AMP 350436-2

BACK END



NOTES:
1. MOTOR HAS 416 SS SHAFT.

61305568

SAFETY WARNING
This motor must be grounded in accordance with local or national electrical codes to prevent possible injury due to electrical shock.

AVERTISSEMENT DE SECURITE
Ce moteur doit être fondée sur conformément à la réglementation locale ou national électrique codes pour prévenir d'éventuelles blessures en raison de choc électrique.

00464668

FASCO Fasco Industries, Inc
Motor Division

Assembled in Mexico

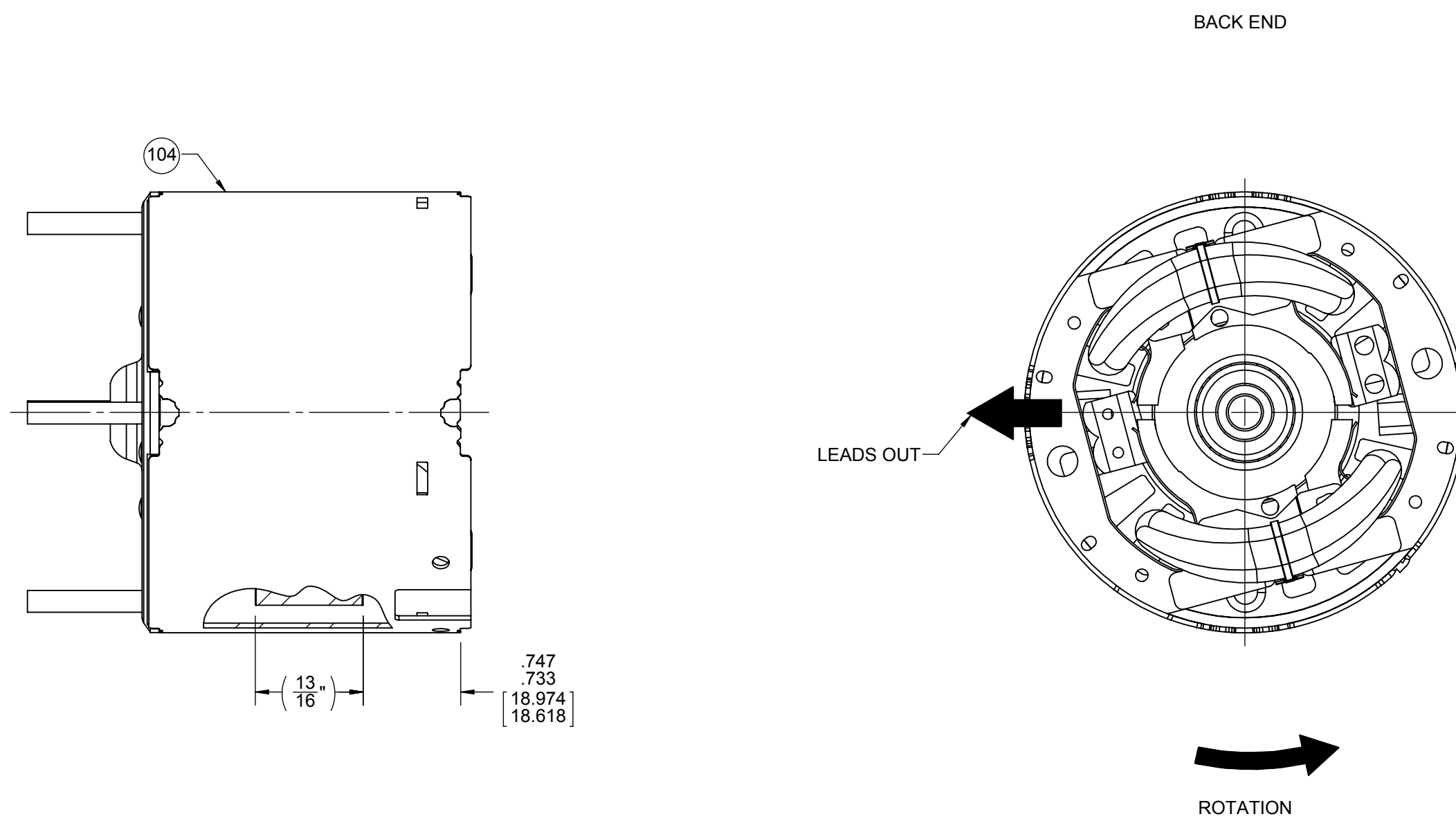
No. 712113039 TYPE U21B T.P. AO E40513
115 V 60 Hz Class B
.65 A 3000 RPM
Model D032A Max Amb 40°C
Reference 1/70 HP

61299553

CUSTOMER:	FASCO DIST.	APPLICATION:	COUNTER SALES				
CUSTOMER PN:	D032A	MOTOR WEIGHT:	2.2 LBS.				
		ENVIRONMENT:	DAMP				
HORIZONTAL	UP	MOTOR TYPE					
	DOWN	SHADED POLE					
	B	LA	FR				
	00	21	30				
		A	S				
		V	02				
		C	E				
		KG	5				
		B	1				
		A	0				
TYPICAL PERFORMANCE AT 115 VOLTS 60 HZ							
MOTOR SPEED	IDLE		LOADED		LOCKED		BREAK
	RPM	AMP	WATT	IN OZ	RPM	AMP	WATT
	3372	.56	38	4.44	3000	.64	49

DRAWING REVISION AA	REVISION BY PLA	DATE 6/1/2017	TOLERANCES UNLESS OTHERWISE SPECIFIED: DEC. INCH mm ANGLE .X ±0.1 [±2.5] ±1° .XX ±0.01 [±0.25] .XXX ±0.005 [±0.127] .XXXX ±0.0005 [±0.0127]	DRAWN BY MLS	REGAL Regal Beloit America, Inc.
ECO ECO-0123093	APPROVED BY MLS	DATE 6/1/2017	REMOVE BURRS & BREAK SHARP EDGES: .003/.015 [0.076/.381] X 45° CORNER FILLETS: R.02 [51] MACHINED SURFACES: .125/ mm 3.2 INCH mm SHOWN IN [BRACKETS]	DATE 9/28/2015	DESCRIPTION
ECO DESCRIPTION UPDATED TEST DATA COPYRIGHT REGAL BELOIT AMERICA, INC. ALL RIGHTS RESERVED. PROPRIETARY AND CONFIDENTIAL INFORMATION - THIS DOCUMENT IS THE PROPERTY OF REGAL BELOIT AMERICA, INC. ("OWNER") AND CONTAINS OWNER'S PROPRIETARY INFORMATION. ANY PERSON, CORPORATION OR OTHER FIRM RECEIVING IT IS DEEMED, BY RECEIVING IT, TO AGREE THAT IT, AND/OR ANY PART OF IT, SHALL NOT BE DISCLOSED TO ANY PERSON, CORPORATION OR OTHER ENTITY, DUPLICATED, AND/OR USED, EXCEPT AS EXPRESSLY APPROVED IN WRITING IN ADVANCE BY OWNER. THIS DOCUMENT SHALL BE RETURNED TO OWNER UPON REQUEST. IT MAY BE SUBJECT TO CERTAIN RESTRICTIONS UNDER APPLICABLE EXPORT CONTROL LAWS AND REGULATIONS.				APPROVED BY BGP	MOTOR ASSY
				DATE 9/28/2015	MATERIAL
				REFERENCE	PROCESS/FINISH BLACK
				THIRD ANGLE PROJECTION	SIZE C
				DRAWING NUMBER 712113039	SHEET 1 OF 2

NOTES:
 1. ALL SPACINGS THRU AIR BETWEEN WIRE AND METAL MUST BE AT LEAST: .063 [1.600].



PACKING SPECIFICATIONS

1. PACK 1 PER CONTAINER, 45 CONTAINERS PER PALLET, 5 LAYERS PER PALLET, 225 MAX. PER PALLET, PER 88834200 AND 88834808.
2. PLACE (1) FILLER PAD ON PALLET, (1) BETWEEN EACH LAYER, AND (1) ON TOP OF PALLET LOAD.
3. PLACE PC 133 FILLER TUBE ON CLIP END OF MOTOR, PLACE PC 134 FILLER TUBE ON WELD END OF MOTOR. PLACE MOTOR IN CARTON.
4. CARTON LABELS MUST ALL FACE ONE DIRECTION TOWARD THE OPEN END OF THE PALLET. SEE 88834408.
5. NO PACKING TAPE OVER CARTON LABEL.

DRAWING REVISION AA	REVISION BY PLA	DATE 6/1/2017	TOLERANCES UNLESS OTHERWISE SPECIFIED: DEC. INCH mm ANGLE ±1°	DRAWN BY MLS	REGAL™ Regal Beloit America, Inc.	
ECO ECO-0123093	APPROVED BY MLS	DATE 6/1/2017	.X ±0.1 [±2.5] .XX ±0.01 [±0.25] .XXX ±0.005 [±0.127] .XXXX ±0.0005 [±0.0127]	DATE 9/28/2015	DESCRIPTION	
ECO DESCRIPTION UPDATED TEST DATA			REMOVE BURRS & BREAK SHARP EDGES: 003/015 [076/381] X 45° CORNER FILLETS: R.02 [51] MACHINED SURFACES: .125/3.2 mm INCH/mm	APPROVED BY BGP	MOTOR ASSY	
<small>COPYRIGHT REGAL BELOIT AMERICA, INC. ALL RIGHTS RESERVED. PROPRIETARY AND CONFIDENTIAL INFORMATION - THIS DOCUMENT IS THE PROPERTY OF REGAL BELOIT AMERICA, INC. ('OWNER') AND CONTAINS OWNER'S PROPRIETARY INFORMATION. ANY PERSON, CORPORATION OR OTHER FIRM RECEIVING IT IS DEEMED, BY RECEIVING IT, TO AGREE THAT IT, AND/OR ANY PART OF IT, SHALL NOT BE DISCLOSED TO ANY PERSON, CORPORATION OR OTHER ENTITY, DUPLICATED, AND/OR USED, EXCEPT AS EXPRESSLY APPROVED IN WRITING IN ADVANCE BY OWNER. THIS DOCUMENT SHALL BE RETURNED TO OWNER UPON REQUEST. IT MAY BE SUBJECT TO CERTAIN RESTRICTIONS UNDER APPLICABLE EXPORT CONTROL LAWS AND REGULATIONS.</small>			DATE 9/28/2015	REFERENCE	MATERIAL	PROCESS/FINISH BLACK
				THIRD ANGLE PROJECTION	SIZE C	DRAWING NUMBER 712113039
						SHEET 2 OF 2