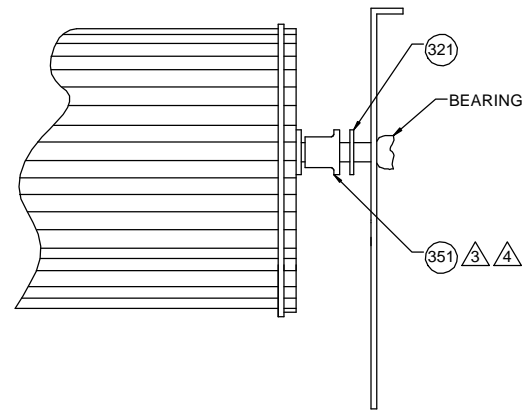


THERMALLY PROTECTED
CLASS "B" INSULATION

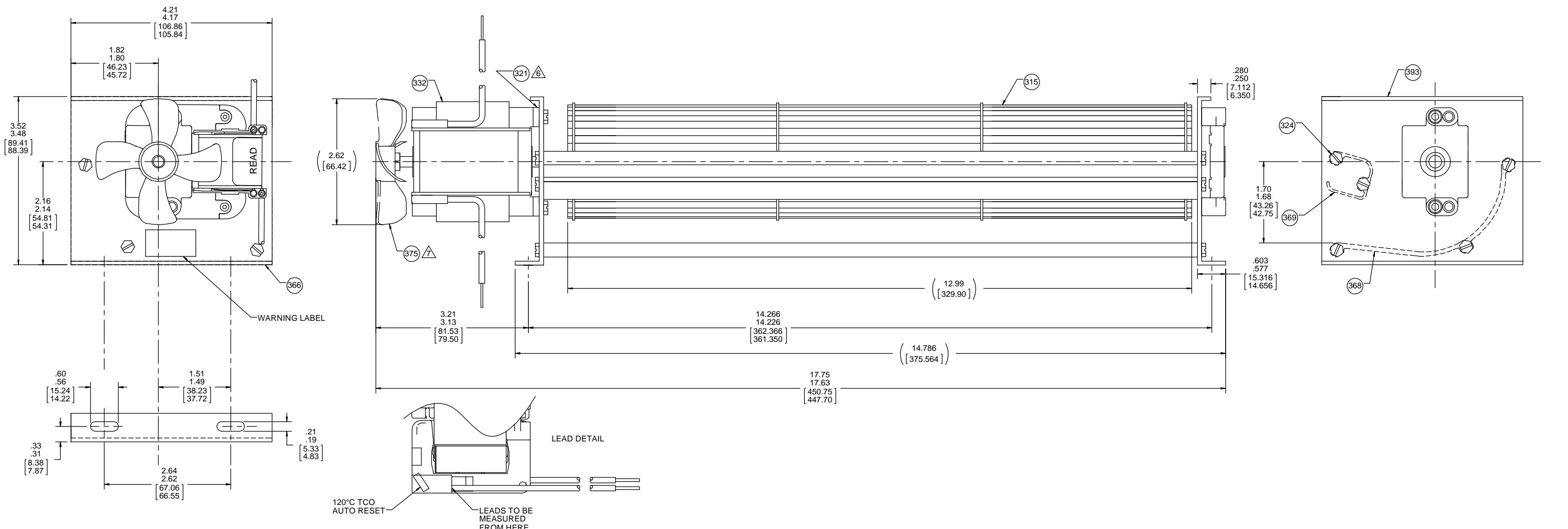
APPLICATION:		B	LA	FR	A	S	C	E	B	A
CUSTOMER:	FASCO DIST.	DM	58	52	X	06	OS	5	A	0
CUSTOMER PN:	B22513									

LEAD MATERIAL
18 GA., 125°C, 2/64 INSUL.,
X-LINKED POLY., (2) BLACK
12.00/10.00 [304.80/254.00]
.56/.44 [14.225/11.18] STRIP

- NOTES:
- BOTTOM EDGE OF END PLATES TO BE IN THE SAME PLANE WITHIN .059 [1.499] MAX.
 - APPLY 61294659 LABEL TO BACK WALL OF BLOWER TO READ RIGHT WITH EXHAUST IN UNDERSHOT POSITION.
 - CUPPED SIDE OF SPACER TO BE TOWARD BEARING.
 - ASSEMBLE SPACER/WASHER COMPONENTS ON PIN AS SHOWN IN DETAIL. SPACER/WASHER COMPONENTS MUST BE ASSEMBLED AGAINST PIN SHOULDER. ASSEMBLE IMPELLER TO SHAFT WITH ENDPLAY PULLED OUT TOWARD IMPELLER. SPACER/WASHER COMPONENTS MUST BE AGAINST OUTBOARD BEARING IN THE POSITION WHILE TIGHTENING IMPELLER SET SCREW. ENDPLAY WILL ALLOW ACCEPTABLE SPACING BETWEEN SPACER/WASHER COMPONENTS & OUTBOARD BEARING. INSPECTION TEST FIXTURE REQUIRED.
 -
 - ASSEMBLE (4) PC 321 SPACERS BETWEEN BEARING STRAP AND HOUSING.
 - END OF SHAFT TO BE FLUSH WITH CENTER OF PC. 375 FAN.
 - ROTOR CORE, STATOR CORE AND STATOR BAR ASSEMBLIES ARE COATED WITH TWIN EMULSION.
 - PACK 1 PER CONTAINER, 72 MAX. PER PALLET, PACKING ASSY.: 87855518, 12 CONTAINERS PER LAYER, 6 LAYERS PER PALLET, 88834200 AND 88834408.
 - CARTON LABELS MUST ALL FACE ONE DIRECTION TOWARD THE OPEN END OF THE PALLET. SEE 88834408.
 - NO PACKAGING TAPE OVER CARTON LABEL.



SPACER & WASHER DETAIL



61305568

SAFETY WARNING
This motor must be grounded in accordance with local or national electrical codes to prevent possible injury due to electrical shock.

AVERTISSEMENT DE SECURITE
Ce moteur doit être fondée sur conformément à la réglementation locale ou national électrique codes pour prévenir d'éventuelles blessures en raison de choc électrique.

61294659

FASCO[®] TRANSFLO BLOWER

TYPICAL PERFORMANCE TEST DATA IN FREE AIR
AT 115 VOLTS 60 Hz

	RPM	WATTS	AMPS
	3067	79	1.24

BLOWER WEIGHT 5.0 LBS. ENDPLAY .030/.005 [.762/.127]

DRAWING REVISION KA	REVISION BY MLS	DATE 12/1/2017	TOLERANCES UNLESS OTHERWISE SPECIFIED: DEC. INCH mm ANGLE ±1°	DRAWN BY JMG	DATE 04/13/2016	DESCRIPTION OUTLINE BLOWER ASSY
ECO-0134907	APPROVED BY PLA	DATE 12/1/2017	.XX ±0.01 [±0.25] .XXX ±0.005 [±0.127] XXXX ±0.0005 [±0.0127]	APPROVED BY MLM	DATE 04/13/2016	MATERIAL PROCESS/FINISH NATURAL
UPDATED PACKING ASSY NUMBER <small>PROPRIETARY AND CONFIDENTIAL INFORMATION - THIS DOCUMENT IS THE PROPERTY OF REGAL BELOIT AMERICA, INC. CONCEPTS AND CONTENTS OWNERS PROPRIETARY INFORMATION. ANY PERSON, CORPORATION OR OTHER FIRM RECEIVING IT IS DEEMED, BY RECEIVING IT, TO AGREE THAT IT, AND/OR ANY PART OF IT, SHALL NOT BE DISCLOSED TO ANY PERSON, CORPORATION OR OTHER ENTITY, DUPLICATED, AND/OR USED, EXCEPT AS EXPRESSLY APPROVED IN WRITING IN ADVANCE BY OWNER. THIS DOCUMENT SHALL BE RETURNED TO OWNER UPON REQUEST. IT MAY BE SUBJECT TO CERTAIN RESTRICTIONS UNDER APPLICABLE EXPORT CONTROL LAWS AND REGULATIONS.</small>			REMOVE BURRS & BREAK SHARP EDGES: .003/.015 [.076/ .381] X 45° CORNER FILLETS: R.02 [.51] MACHINED SURFACES: 125/ INCR/ mlv mm SHOWN IN [BRACKETS]	THIRD ANGLE PROJECTION SIZE D DRAWING NUMBER 70581010	SHEET 1 OF 1	