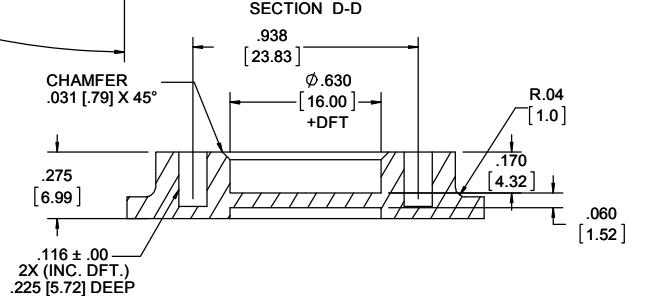
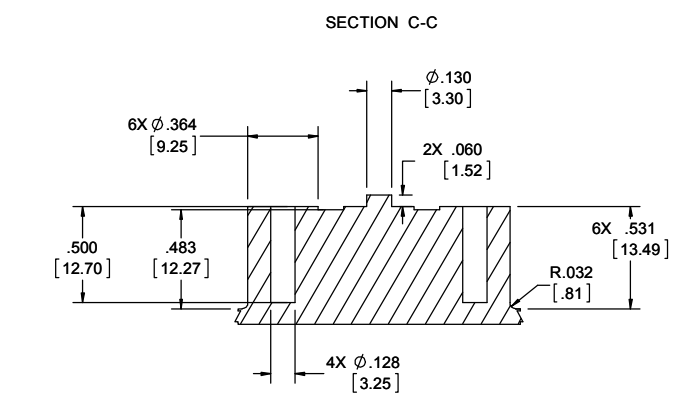
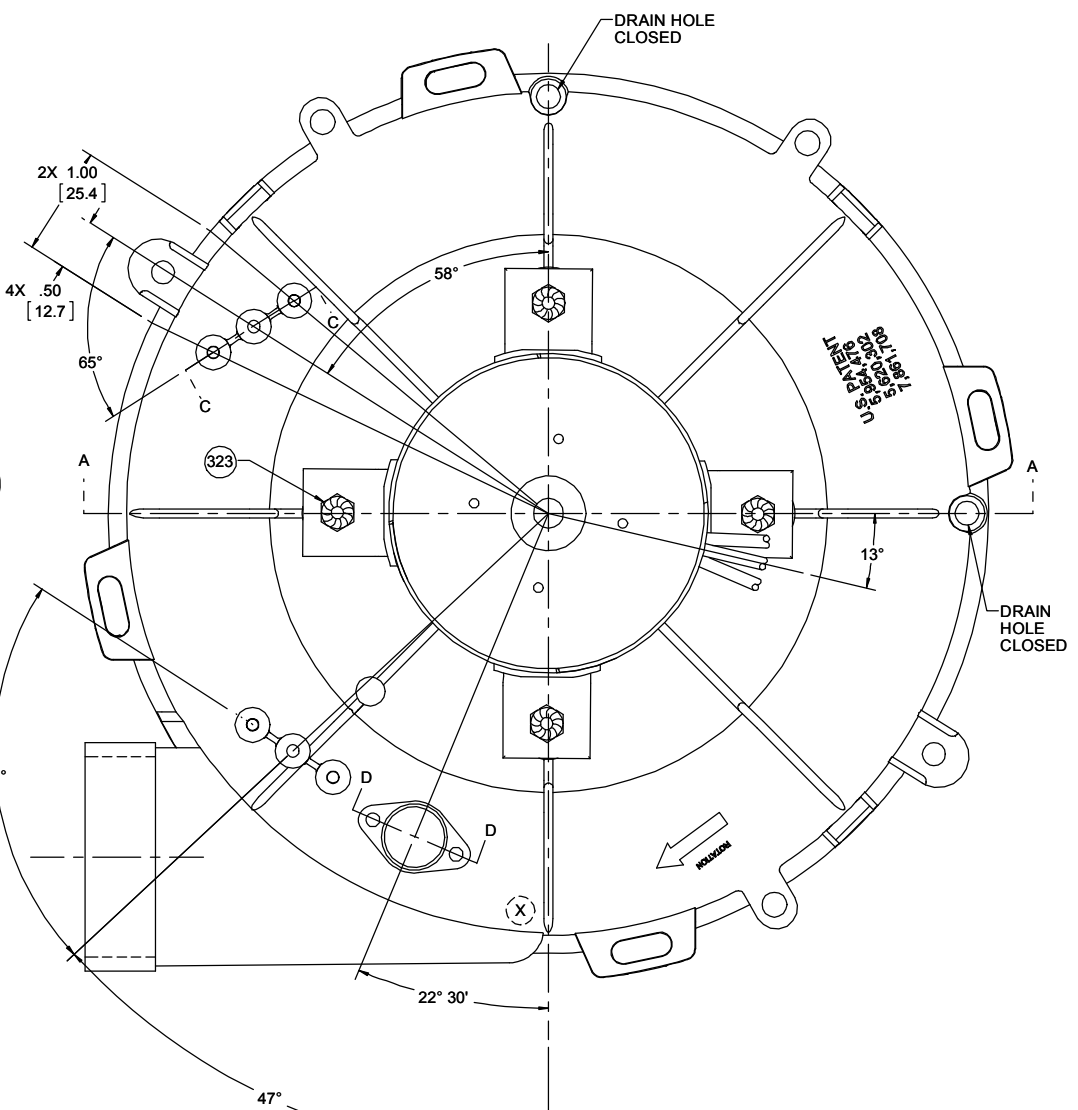
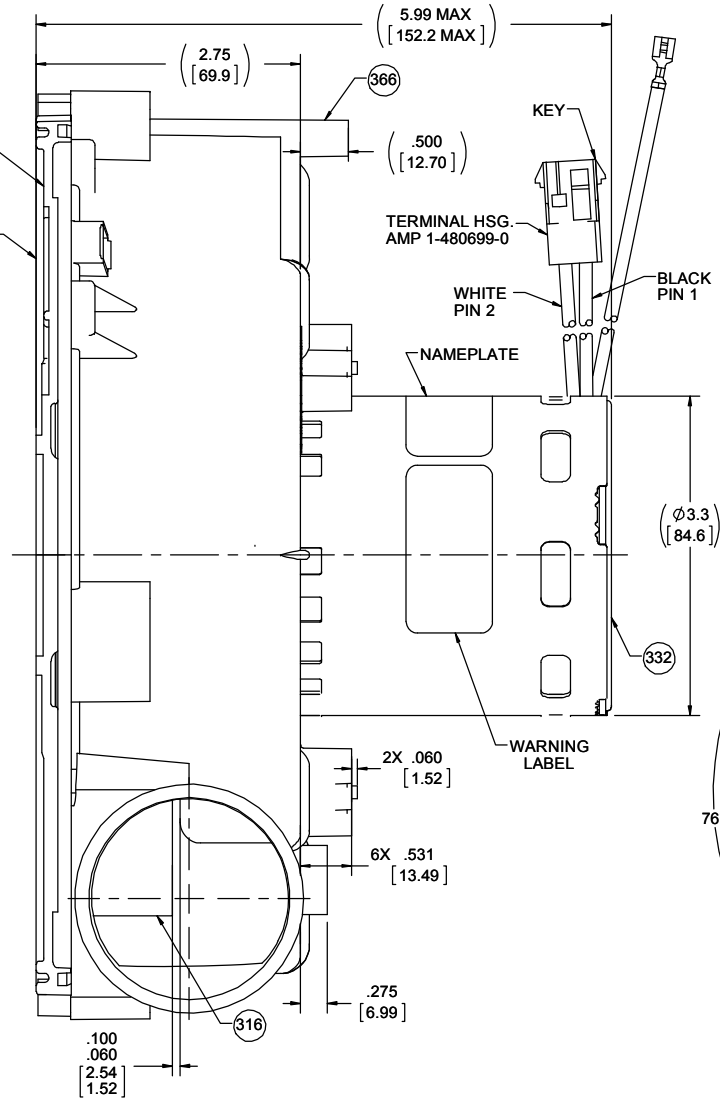
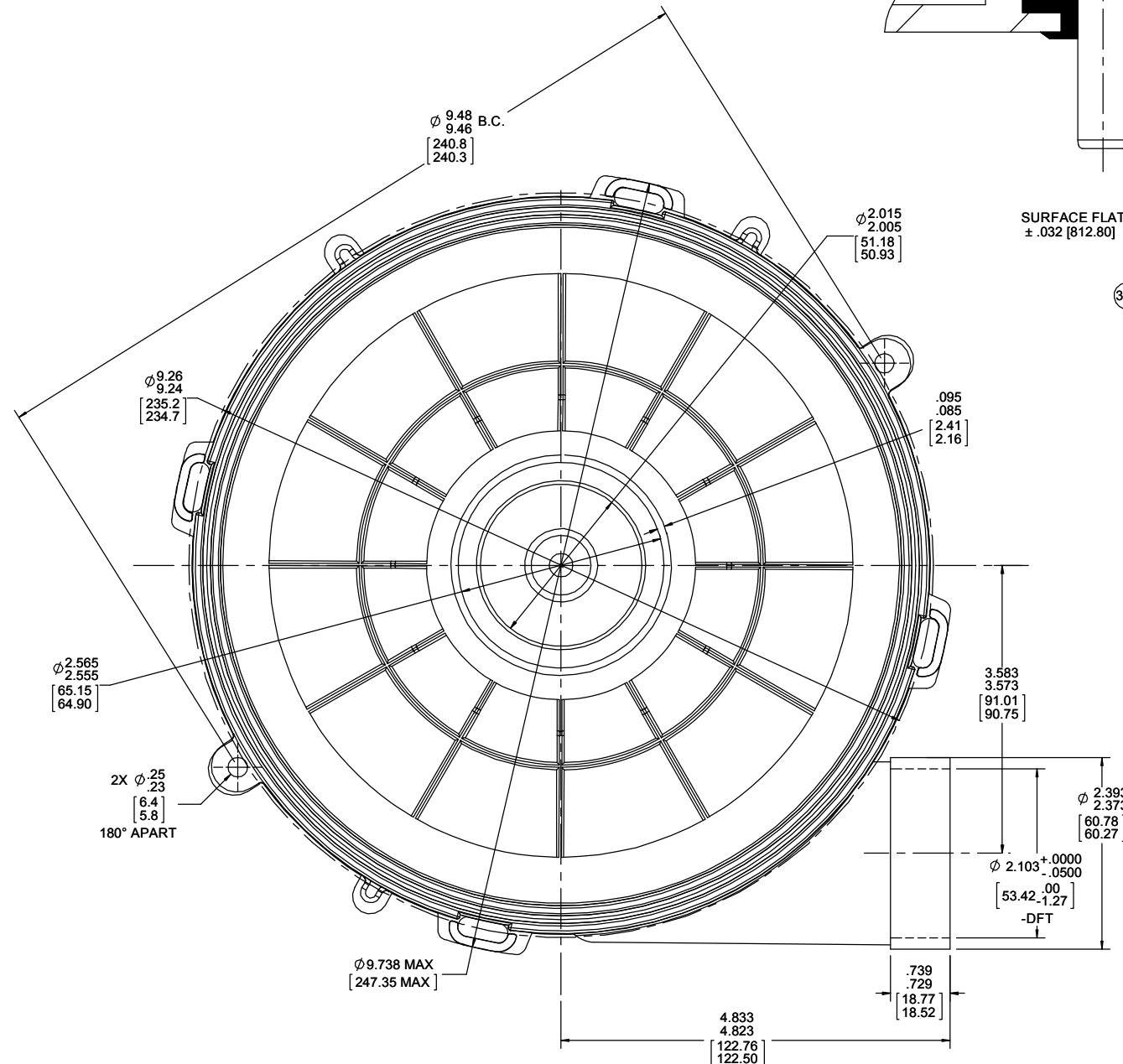
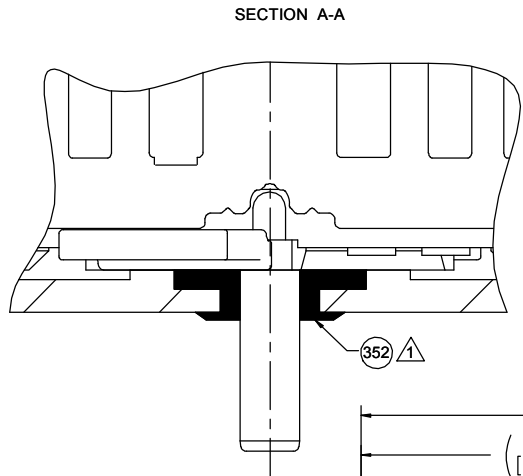


- NOTES:
- ASSEMBLE PC 352 SEAL BEFORE MOTOR HAS BEEN ASSEMBLED.
  - ALL UNITS TO BE 100% TESTED ON AUTOMATIC TEST FIXTURES PER TEST LIMITS ESTABLISHED IN THE TESTER DATABASE.
  - EVERY 20TH BLOWER, ASSEMBLE RUBBER COUPLING END OF TEST FIXTURE 33-222-001 SECURELY TO BLOWER EXHAUST, WITH TEST FIXTURE ON EXHAUST AND INLET RESTRICTED TO 1.25 [21.8] IN. TAP PORT IN TEST FIXTURE MUST READ BETWEEN +1.50 [38.1] IN. AND +2.25 [57.2] IN. NOTE - ALL READINGS ABOVE ARE CORRECTED TO STANDARD AIR (0.075 LB/FT<sup>3</sup>).
  - INSPECTION TEST FIXTURE REQUIRED.
  - PACK 1 PER CONTAINER, 12 CONTAINERS PER LAYER, 3 LAYERS PER PALLET, 36 MAX. PER PALLET, PACKING ASSY. 87854714, PER 88834200 AND 88834408.
  - CARTON LABELS MUST ALL FACE ONE DIRECTION TOWARD THE OPEN END OF THE PALLET. SEE 88834408.
  - NO PACKAGING TAPE OVER CARTON LABEL.

THERMALLY PROTECTED CLASS "B" INSULATION SEALED BALL BEARING 416 SS SHAFT

APPLICATION:	GAS FURNACE	B	LA	FR	A	S	C	E	B	A
CUSTOMER:	FASCO DIST.	PS	21	47	F	06	ET	5	0	0
CUSTOMER PN:	A992	FINISH: BLOWER - BLACK, MOTOR - GRAY								

LEAD MATERIAL  
 18 GA. 125°C 2/64 INSUL.  
 X-LINKED POLY.  
 (1) BLACK, (1) WHITE  
 8.00/6.00 [203.2/152.4]  
 SOCKET TERMS.  
 AMP 350536-1  
 GROUND LEAD MATERIAL  
 GRN/YEL  
 33.00/31.00 [838.2/787.4]  
 FSPADE TERM.  
 AMP 41274



	RPM	WATTS	AMPS
	3350	160	2.35
BLOWER WEIGHT	5.25 LBS.		ENDPLAY XX/XX

DRAWING REVISION AC	REVISION BY ZF	REV DATE/DATE 07-10-2019	TOLERANCES (EXCEPT AS NOTED): DEC. INCH mm ANGLE X ±0.1 [±3] 1° XX ±0.01 [±0.3] XXX ±0.005 [±0.13] XXXX ±0.0005 [±0.013]	DRAWN BY ZF	DATE 07-10-2019	Regal Beloit America, Inc.
ECO-0169869	APPROVED BY MLS	DATE 07-10-2019	REMOVE BURRS & BREAK SHARP EDGES: .003/.015 [08/38] X 45° CORNER FILLETS: R.02 [±.5] MACHINED SURFACES: 125/5 INCR/ MIL/ mm DIMENSIONS IN [BRACKETS] ARE FOR REFERENCE ONLY	APPROVED BY MLS	DATE 07-10-2019	DESCRIPTION OUTLINE BLOWER ASSY
BLOWER WEIGHT 5.25 LBS.			MATERIAL		PROCESS/FINISH	SIZE D
ENDPLAY XX/XX			DRAWING NUMBER 702112971		SHEET 1 OF 1	