

NOTES:

1. ASSEMBLE GROUND STRAP TO HOUSING WITH PC 325 SCREW AS SHOWN.
2. ASSEMBLE PC 318 SCREEN GUARD BETWEEN PC 317 INLET RING AND HOUSING.
3. SECURE COVER TO CONDUIT BOX WITH PC 324 SCREW AFTER TESTING.
4. NO KNOCKOUTS REMOVED.
5. INSPECTION TEST FIXTURE IS REQUIRED.
6. PACK 1 PER CONTAINER, 9 PER LAYER, 27 MAX. PER PALLET, PACK ASSY. 87854000 P.S. 88834200 AND P.S. 88834408
7. CARTON LABELS MUST ALL FACE ONE DIRECTION TOWARD THE OPEN END OF THE PALLET, SEE P.S. 88834408.
8. NO PACKAGING TAPE OVER CARTON LABEL.

APPLICATION	SOLAR BLOWER									
B	LA	FR	A	S	C	E	B	A		
19	90	30	V	10	BJ	6	5	0		

THERMALLY PROTECTED CLASS "B" INSULATION

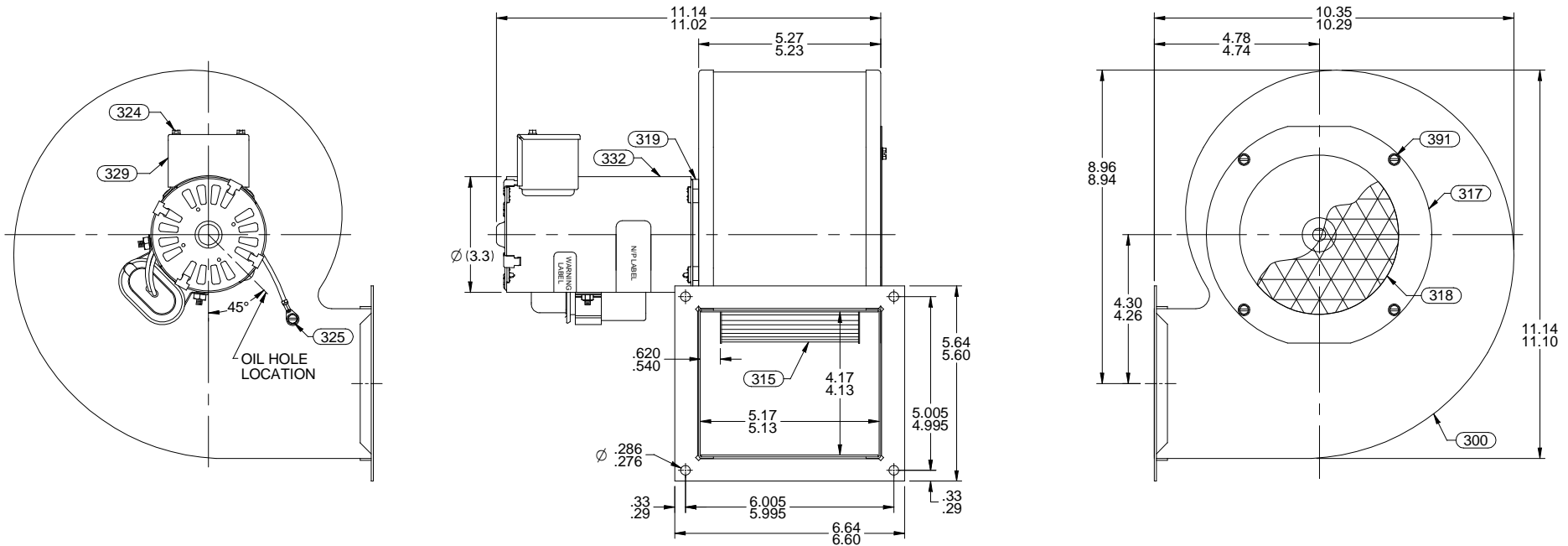
LEAD MATERIAL
 18 GA. 125°C. 2/64 INSUL.
 X-LINKED POLY. (1) WHITE
 (1) BLACK, AND (1) RED
 8.00 / 6.00 IN. LONG
 .56 / .44 IN. STRIP

CAPACITOR LEAD MATERIAL
 18 GA. 125°C. 2/64 INSUL.
 X-LINKED POLY. (2) BROWN

CUSTOMER FASCO DIST.

CUSTOMER PART NO. A455

GROUND LEAD MATERIAL
 18 GA. 125°C. 2/64 INSUL.
 X-LINKED POLY. (1) GRN/YEL
 6.00 / 5.00 IN. LONG
 W/ TERM. 89020156
 AMP 61794-1



Connection Diagram
 Wht — Common
 Blk — High
 Red — Low
 Brn —
 Brn —
 Grn/Yel — Grd

TYPICAL PERFORMANCE TEST DATA
 WITH A 3.25" INLET RESTRICTOR
 AT 115 VOLTS 60 HZ.

UNLESS OTHERWISE SPECIFIED DIMENSIONS ARE IN INCHES TOLERANCES ARE:
 FRACTIONS ± 1/16 DECIMALS .XX ± .01 ANGLES XXX ± .005

ECO. NO.	REV.	DATE	APPROVAL		R.P.M.	WATTS	AMPS
4004434	04	2/3/2012	SED/KSA	HIGH	1702	94	1.00
4009676	05	7/96/2013	SDM/SED	LOW	1608	59	.60
4009786	06	7/19/2013	SED/SDM				
0064921	07	11/11/2014	MLM/JMG	BLOWER WEIGHT 11 3/4 LBS.			END PLAY .010/.030

APPROVALS	DATE
DRAWN SED	2-17-06
CHECKED SMM	2-17-06
FINISH COLOR BLACK	

FASCO FASCO MOTORS GROUP
 AC MOTOR/BLOWER DIVISION

CONFIDENTIAL: DO NOT DUPLICATE OR DISCLOSE TO THIRD PARTIES WITHOUT WRITTEN PERMISSION OF FASCO MOTORS GROUP, AC MOTOR/BLOWER DIVISION.

TITLE BLOWER ASSEMBLY

SIZE **B** DWG. NO. 7090 2371 REV. 07

DO NOT SCALE DRAWING SHEET 1 OF 1