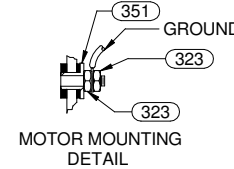
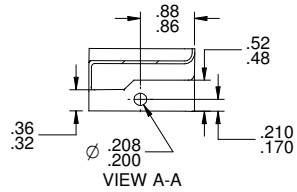
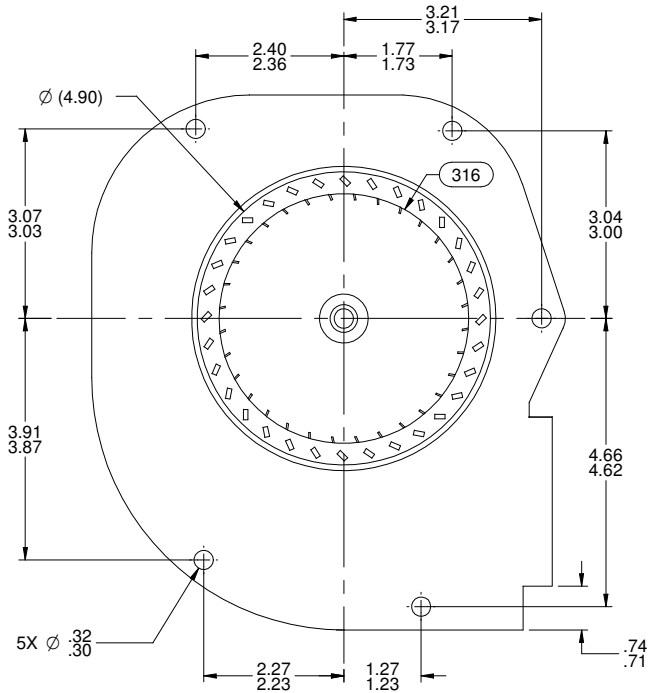


NOTES:

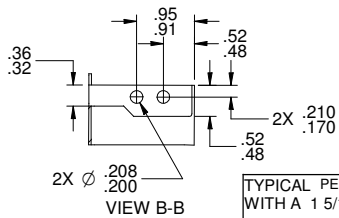
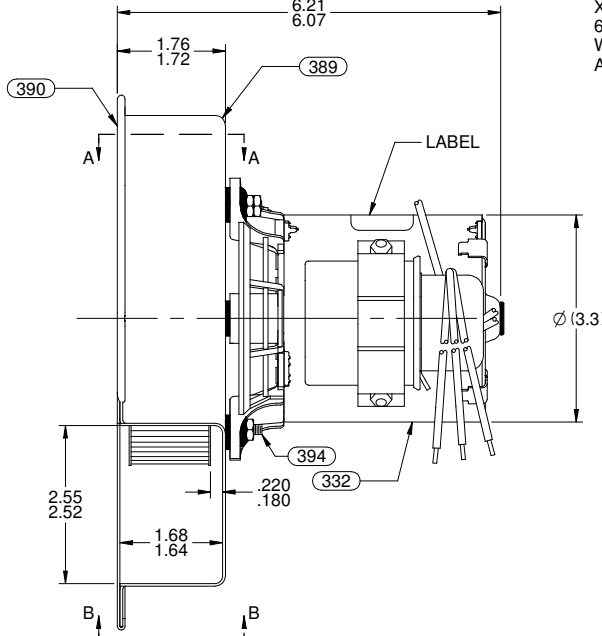
1. ASSEMBLE GROUND STRAP BETWEEN (2) PC 323 NUTS.
2. 100% HIPOT 1500V FOR ONE SECOND.
3. 100% RUN ON FREE AIR AND TEST FOR AMP DRAW.
4. AUDIT VIBRATION PERIODICALLY TO INSURE .0025 MAX. DISPLACEMENT.
5. INSPECTION TEST FIXTURING IS REQUIRED.
6. PACK 1 PER CONTAINER, 80 MAX. PER PALLET, PACKING ASSY.: 8785 4335, 16 CONTAINERS PER LAYER, 5 LAYERS PER PALLET, P.S. 8883 4200.
7. CARTON LABELS MUST ALL FACE ONE DIRECTION TOWARD THE OPEN END OF THE PALLET. SEE P.S. 8883 4408.
8. NO PACKING TAPE OVER CARTON LABEL.



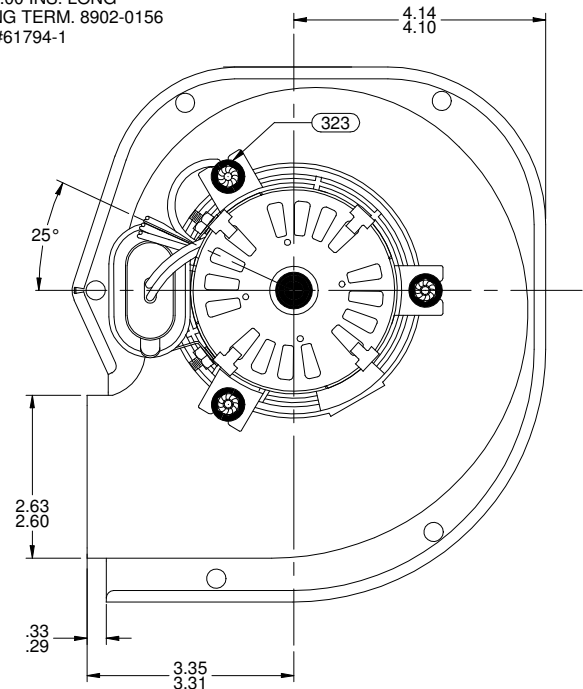
GROUND LEAD MATERIAL  
 18 GA. 125°C 2/64 INSUL.  
 X-LINKED POLY., GRN/YEL.  
 6.00/4.00 INS. LONG  
 W/RING TERM. 8902-0156  
 AMP #61794-1

LEAD MATERIAL  
 18 GA. 125°C 2/64 INSUL.  
 X-LINKED POLY., (1) BLUE, (1) BLACK & (1) RED  
 14.00/12.00 INS. LONG  
 .56/.44 IN. STRIP

CAPACITOR LEAD  
 18 GA. 125°C 2/64 INSUL.  
 X-LINKED POLY., (2) BROWN



Connection Diagram  
 Red — Common  
 Blk — High  
 Blue — Low  
 Brn —  
 Brn —  
 Gm/Yel — Grd



TYPICAL PERFORMANCE TEST DATA  
 WITH A 1 5/16" INLET RESTRICTOR

ECO. NO.	REV.	DATE	APPROVAL
C440072	02	09/07/2010	BGP/SDM
4007018	03	10/16/2012	SED/BGP
0067005	04	12/10/2014	PLA/BGP

AT	230	VOLTS	60	HZ.
HIGH	2890	36	.13	
LOW	1874	35	.14	

UNLESS OTHERWISE SPECIFIED DIMENSIONS ARE IN INCHES TOLERANCES ARE:		
FRACTIONS	DECIMALS	ANGLES
± 1/16	XX ± .01	XXX ± .005

**FASCO** FASCO MOTORS GROUP  
 AC MOTOR/BLOWER DIVISION

CONFIDENTIAL: DO NOT DUPLICATE OR DISCLOSE TO THIRD PARTIES WITHOUT WRITTEN PERMISSION OF FASCO MOTORS GROUP, AC MOTOR/BLOWER DIVISION.

TITLE: **BLOWER ASSEMBLY**

SIZE: **B** DWG. NO. 7062 5803

FINISH COLOR: BLOWER: NATURAL MOTOR: FLAT BLACK

DO NOT SCALE DRAWING SHEET 1 OF 1

REV. 04