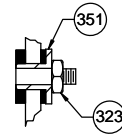


APPLICATION:	GAS FURNACE	B	LA	FR	A	S	C	E	B	A
CUSTOMER:	FASCO DIST.	12	21	33	V	05	EH	6	1	0
CUSTOMER PN:	A367									

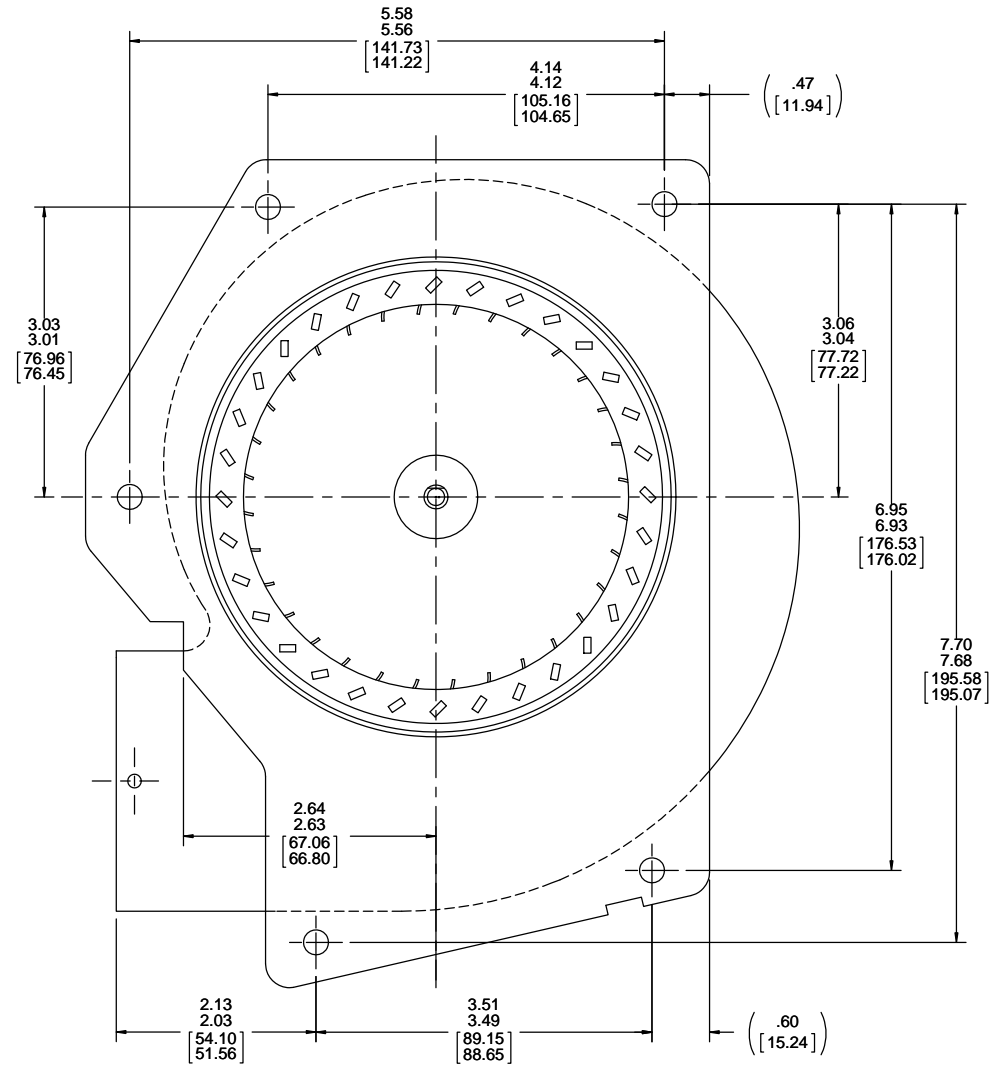
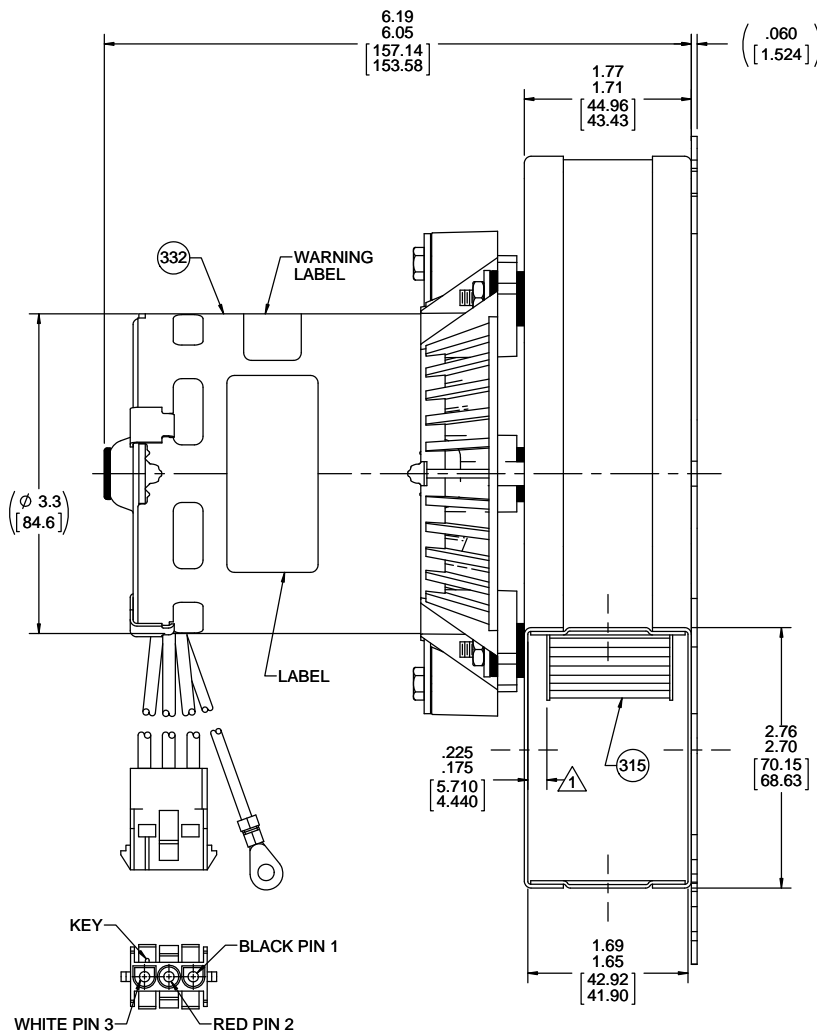
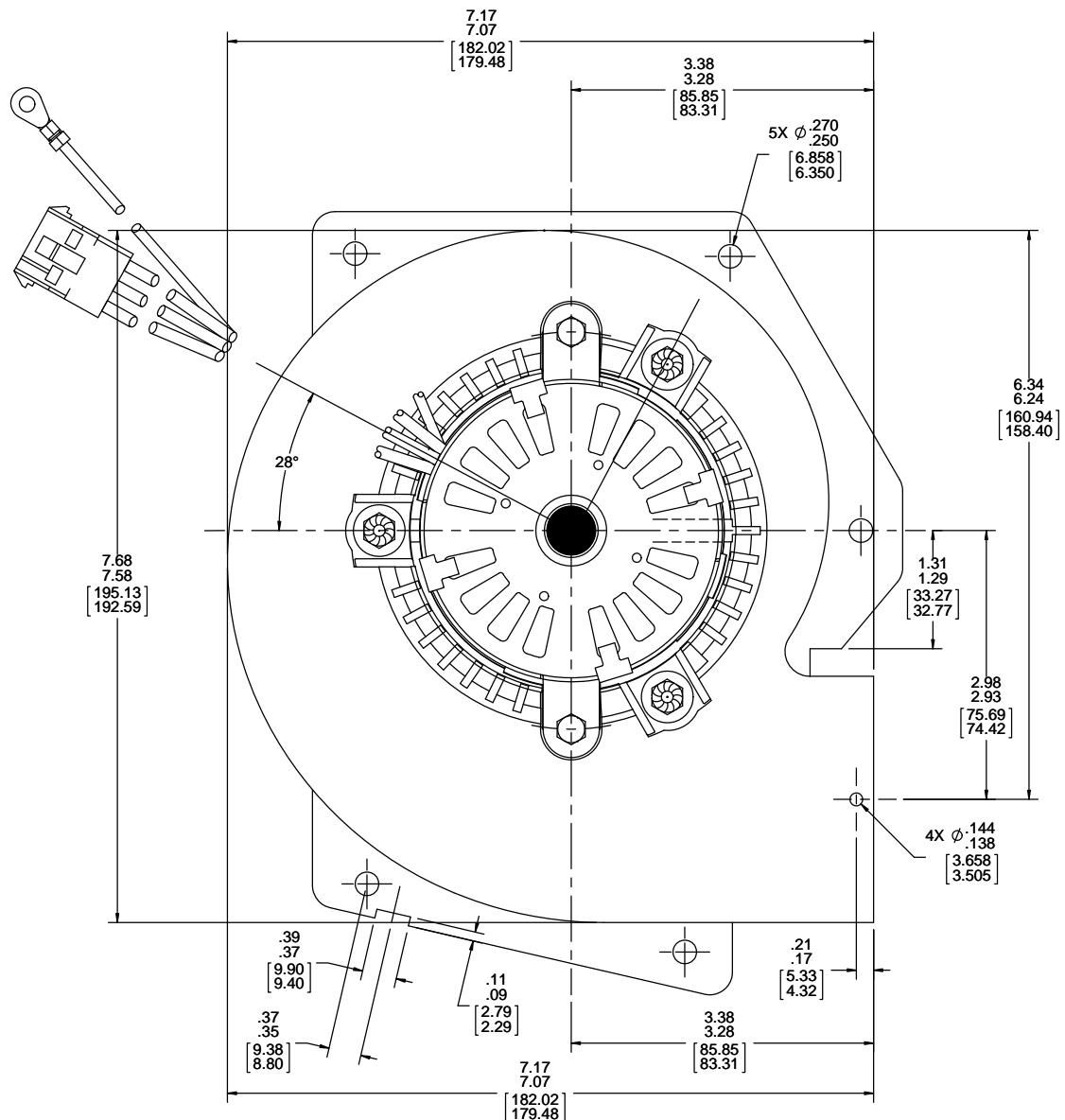
- NOTES:
1. IMPELLER DIM. WITH END PLAY PUSHED TOWARD MOTOR.
 2. NO STA-LOC REQUIRED ON IMPELLER.
 3. 100% HYPOT 1500 V. FOR 1 SECOND.
 4. INSPECTION TEST FIXTURE IS REQUIRED.
 5. AUDIT VIBRATION PERIODICALLY TO INSURE .0025 MAX DISPLACEMENT.
 6. PACK 1 PER CONTAINER, 80 MAX. PER PALLET, PACKING ASSY. 87854335, 16 CONTAINERS PER LAYER, 5 LAYERS PER PALLET, PER 88834200.
 7. CARTON LABELS MUST ALL FACE ONE DIRECTION TOWARD THE OPEN END OF THE PALLET. SEE 88834408.
 8. NO PACKING TAPE OVER CARTON LABEL.
 9. BLOWER - NATURAL, MOTOR - FLAT BLACK



MOTOR MOUNTING DETAIL

LEAD MATERIAL
 18 GA. 125°C 4/64 INSUL.
 X-LINKED POLY.
 (1) RED, (1) WHITE, (1) BLACK
 7.00/5.00 [177.80/127.00]
 PIN TERM. 89039166
 AMP 350538-1
 TERM. HSG. 89034021
 AMP 1-480701-0
 LEAD LENGTH MEASURED
 TO END OF TERM. HSG.

GROUND STRAP
 18 GA. 125°C 2/64 INSUL.
 X-LINKED POLY., GRN/YEL
 18.00/16.00 [457.20/406.40]
 RING TERM. 89039009
 AMP 41333



Connection Diagram
 Wht — Common
 Blk — High
 Red — Low
 Grm/Yel — Grd

TYPICAL PERFORMANCE TEST DATA WITH 1 5/16" INLET RESTRICTOR AT 115 VOLTS 60 Hz			
	RPM	WATTS	AMPS
HIGH	3052	70	.90
BLOWER WEIGHT	5.25 LBS.	ENDPLAY	.030/.010 [0.762/0.254]

DRAWING REVISION G	REVISION BY PLA	DATE 1/25/2017	TOLERANCES UNLESS OTHERWISE SPECIFIED: DEC. INCH mm ANGLE ±1°	DRAWN BY PLA	DATE 1/25/2017	MATERIAL SEE NOTE 9
ECO-0113443	APPROVED BY MLS	DATE 1/25/2017	XXX ±0.005 [±0.127]	APPROVED BY MLS	DATE 1/25/2017	THIRD ANGLE PROJECTION
ADDED BLOWER WEIGHT, REDRAWN ON SW			REMOVE BURRS & BREAK SHARP EDGES: .003/.015 [0.076/3.91] X 45°	DESCRIPTION BLOWER ASSY		SIZE D
PROPRIETARY AND CONFIDENTIAL INFORMATION - THIS DOCUMENT IS THE PROPERTY OF REGAL BELOIT AMERICA, INC. OWNERS AND CONTAINS OWNERS PROPRIETARY INFORMATION. ANY PERSON, CORPORATION OR OTHER FIRM RECEIVING IT IS DEEMED TO HAVE AGREED TO HOLD THIS INFORMATION IN CONFIDENCE AND TO RETURN IT TO REGAL BELOIT AMERICA, INC. UPON REQUEST. THIS DOCUMENT SHALL BE RETURNED TO OWNER UPON REQUEST. IT MAY BE SUBJECT TO CERTAIN RESTRICTIONS UNDER APPLICABLE EXPORT CONTROL LAWS AND REGULATIONS.			CORNER FILLETS: R.02 [5.1]		REGAL BELOIT AMERICA, INC.	
DRAWING NUMBER 702111885			DRAWING NUMBER 702111885		SHEET 1 OF 1	